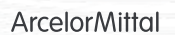


MicroStep®



Selected References

The right solution for every cutting task

Plasma
Laser
Oxyfuel
Waterjet

The right solution

for every cutting task



2D cutting



Bevel cutting



Pipe & profile cutting



Dome cutting



Can be combined with additional technologies:

- Drilling, tapping, countersinking, milling
- Marking
- Scanning
- Material handling

www.microstep.eu



Doppelmayr Seilbahnen GmbH (Austria)
Transport Systems



MACHINE PROFILE

DRM series

- Working area 13,500 x 3,000 mm
- Drilling up to \varnothing 50 mm and tapping up to M33

MG series

- Working area 31,000 x 3,000 mm

1. gantry

- Plasma rotator for weld preparation up to 50° with auto-calibration feature (ACTG®)
- 2D plasma
- 2x 2D oxyfuel
- CCD camera for detecting of position of drilled holes

2. gantry

- Plasma rotator for weld preparation up to 50° with auto-calibration feature (ACTG®)

- 2D plasma
- 2x 2D oxyfuel
- CCD camera for detecting of position of drilled holes

MG series

- Working area 18,000 x 3,000 mm

1. gantry

- Plasma rotator for weld preparation up to 50° with auto-calibration feature (ACTG®)
- 2D plasma
- 2x 2D oxyfuel
- CCD camera for detecting of position of drilled holes

2. gantry

- 4x 2D oxyfuel

2002 saw the merger of two leading ropeway manufacturers with a long tradition: Doppelmayr and Garaventa. This gave rise to the Doppelmayr/Garaventa Group as global competence centers for circulating ropeway systems such as gondolas and chairlifts as well as reversible aerial tramways and funicular railways. They have both played a major role in technical advances and achieved many milestones which have contributed to the breathtaking pace of development in the ropeway industry.



MACHINE PROFILE

DRM series

- Working area 50,000 x 8,000 mm (underwater cutting)
- Plasma rotator for weld preparation up to 50° with auto-calibration feature (ACTG®)
- Inkjet marking
- Operator platform with MMI console on the gantry

2x CombiCut series

- Working area 12,000 x 3,500 mm
- 2x Plasma rotator in parallel operation for weld preparation up to 50° + auto-calibration feature (ACTG®)
- Plasma marking
- Inkjet marking
- Automatic plate edge detection

2x DRM-PL series

- Working area 12,000 x 3,500 mm
- Plasma rotator for weld preparation up to 50° with auto-calibration feature (ACTG®)
- Inkjet marking
- Sand blasting unit for primer removal + Plasma marking
- Automatic plate edge detection

Meyer Turku Oy is one of the leading European shipbuilding companies. The company provides state-of-the-art technology solutions, advanced construction processes and cutting-edge innovations for cruise operators and other ship owners. Meyer Turku specializes in building cruise ships, car-passenger ferries and special vessels. Over the years the shipyard has built more than 1,300 new ships for customers around the world.



MACHINE PROFILE

MG series (Russia)

- Working area 15,000 x 3,500 mm
- Plasma rotator for weld preparation up to 50° with auto-calibration feature (ACTG®)

MG series (Germany)

- Working area 24,000 x 5,000 mm
- Cutting of domes Ø 300 – 4,000 mm up to a height of 1,000 mm

1. gantry

- Plasma rotator for weld preparation up to 50° with auto-calibration feature (ACTG®)
- Console for manual oxyfuel torch

2. gantry

- Plasma rotator for weld preparation up to 50° with auto-calibration feature (ACTG®)
- 2D oxyfuel
- Console for manual oxyfuel torch
- 3D scanner + mScan technology for compensation of the production-related deviation of dome shape by adjusting the generated cutting paths according to the true scanned shape of dome

CombiCut series (Germany)

- Working area 24,000 x 3,500 mm
- Plasma rotator for weld preparation up to 50° with auto-calibration feature (ACTG®)
- Automatic plate edge detection

The Bosch Group is a leading global supplier of technology and services in business sectors of Automotive Technology, Industrial Technology, Consumer Goods, and Energy and Building Technology. The Bosch Group comprises Robert Bosch GmbH and its more than 360 subsidiaries and regional companies in some 50 countries – including sales and service partners, Bosch's representation reaches out to 150 countries.



MACHINE PROFILE

ProfileCut series

- Cutting of H, I, U beams up to HEB 600 and a length of 13,500 mm
- Cutting of pipes Ø 30 – 500 mm up to a length of 13,500 mm
- 3D plasma rotator with tilting up to 120° for weld preparation on beams and pipes + auto-calibration feature (ACTG®)
- 3D scanner for scanning of beams

MSF Pro series

- Working area 3,000 x 1,500 mm
- 2D fiber laser – 2 kW
- Automatic shuttle table

Namaqua Engineering is a supplier of quality engineering products and services, including rigging and cranes, HDPE piping, robotic assembly and welding. Established in 1998 in Vredendal by Stokkies van Zyl, the company has since grown to one of the largest private employers in the area, providing jobs for more than 160 people. In its 25+ years of service, Namaqua Engineering have successfully accomplished over 140 projects.



MACHINE PROFILE

3x MG series

- Working area 27,000 x 3,500 mm
- Plasma rotator for weld preparation up to 45°
- Inkjet marking
- Automatic plate edge detection

MG series

- Working area 27,000 x 3,500 mm
- Plasma rotator for weld preparation up to 45° with tool adjustment station
- Inkjet marking
- Automatic plate edge detection

MG series

- Working area 27,000 x 3,500 mm
- Plasma rotator for weld preparation up to 50° with auto-

calibration feature (ACTG®)

- Inkjet marking
- Automatic plate edge detection

CombiCut series

- Working area 20,000 x 3,000 mm
- 2x 2D oxyfuel
- 2x G-multi station for stripe cutting with 3x 2D oxyfuel torches on each
- Inkjet marking

CombiCut series

- Working area 9,000 x 3,000 mm
- 2D plasma
- 2D oxyfuel
- Inkjet marking

Royal IHC with its 52 locations worldwide is a reliable supplier of innovative and efficient equipment, vessels and services for the offshore, dredging and wet mining markets. With a history steeped in Dutch shipbuilding since the mid-17th century, Royal IHC's shipyards have in-depth knowledge and expertise of engineering and manufacturing high-performance integrated vessels and equipment and providing sustainable services.



MACHINE PROFILE

MG series (Switzerland)

- Working area 21,000 x 3,500 mm
- Plasma rotator for weld preparation up to 50° with auto-calibration feature (ACTG®)
- 2D plasma
- Drilling up to Ø 40 mm and tapping up to M33
- Inkjet marking

CombiCut series (Slovakia)

- Working area 12,000 x 3,000 mm
- 6x 2D oxyfuel

The stürmsfs AG based in Goldach, Switzerland is an internationally operating steel processor with production sites in Switzerland, Austria and Slovakia. The company, which employs 270 people, is a steel trader and manufacturer in the steel, metal and alternative materials sectors. The roots of stürmsfs date back to 1835. In 2011, today's stürmsfs AG was created through the merger of the long-established companies Sturm AG and the Steel + Metal Division of SFS Locher AG.



MACHINE PROFILE

MG series

- Working area 3,000 x 3,000 mm
- 2x 2D plasma
- Automatic shuttle table

BRÜGGEN is the leading European supplier of swap systems for trucks and semi-trailers for goods transport by road that are supplied under the well-known brand KRONE. Founded in 1990, the company with two production sites in Germany is also a service provider for surface coating and operates one of the most modern coating plants in Europe.



MACHINE PROFILE

MSF Max series

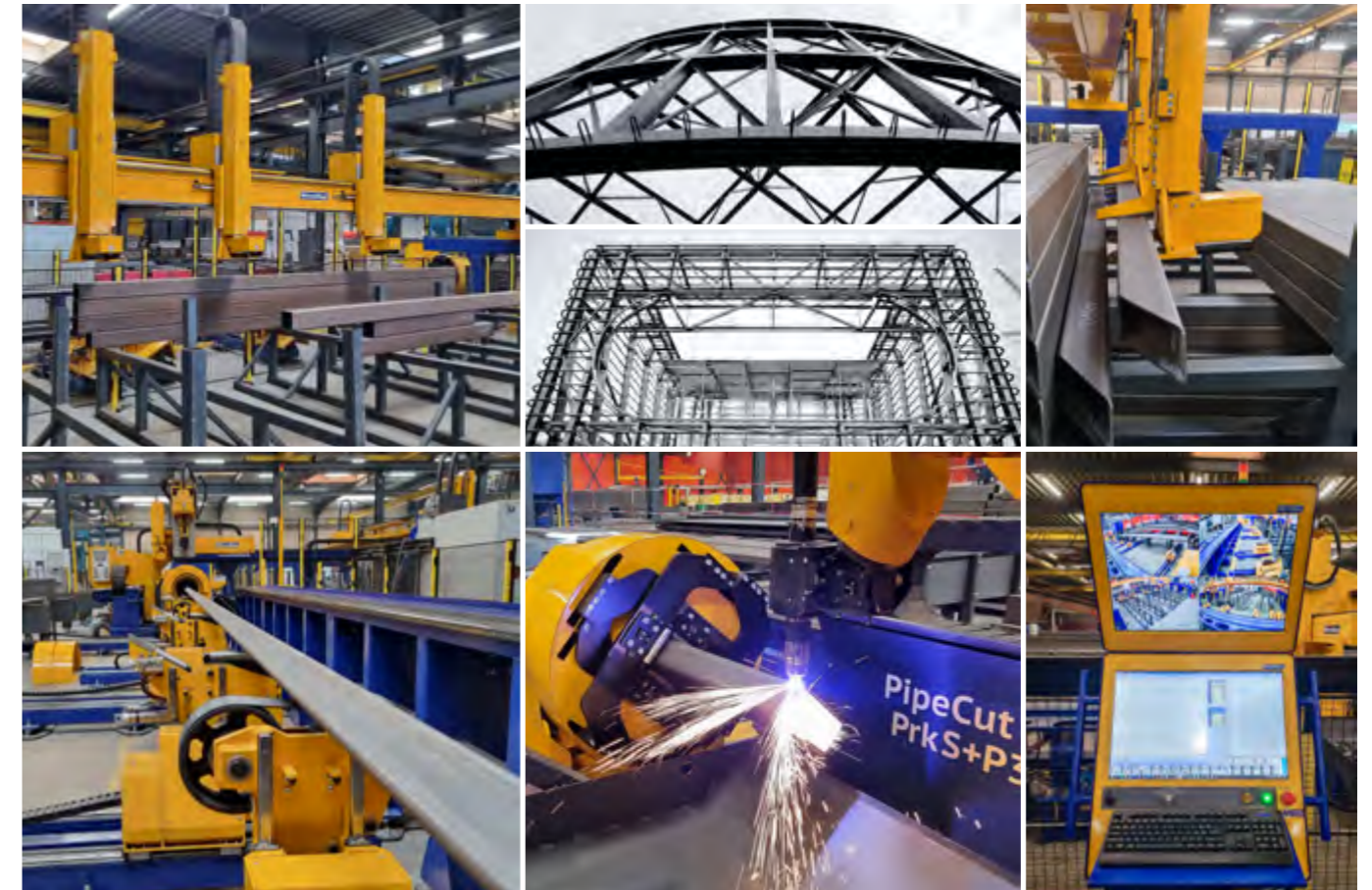
- Working area for sheets 2x 20,000 x 3,000 mm, total effective length 41,000 mm
- Laser bevel head for weld preparation up to 45° with auto-calibration feature (ACTG®)
- 8 kW fiber laser source
- Mobile safety cabin with integrated laser source and control system

2x DRM-PL series

- Working area 20,500 x 20,500 mm
- Plasma rotator for weld preparation up to 45° with auto-calibration feature (ACTG®)
- Grinding unit for primer removal + 2x Plasma marking
- Automatic plate alignment
- Operator control booth on the gantry

CombiCut series

- Working area 19,500 x 7,500 mm
- 2D plasma
- Operator staircases on the gantry with safety protection



MACHINE PROFILE

PLS series

- Working area 9,000 x 2,500 mm
- 2D plasma
- Felt pen marking

MasterCut series

- Working area 12,000 x 2,500 mm
- 2D plasma
- Vibration conveyor table + transversal scrap conveyor

CombiCut series

- Working area 24,000 x 4,000 mm
- Plasma rotator for weld preparation up to 50° with auto-calibration feature (ACTG®)

PipeCut series + Automatic sorting

- Cutting of pipes Ø 50 – 300 mm and hollow sections up to a length of 15,000 mm
- Plasma rotator for weld preparation up to 50° with auto-calibration feature (ACTG®)
- Scanner for profile scanning
- Automatic loading, feeding and unloading of pipes and profiles
- Automatic sorting of pipes and profiles

Located in Saint-Nazaire on the Atlantic coast of France for 150 years, Chantiers de l'Atlantique is a shipbuilding company dedicated to maritime construction and fleet operating services. Thanks to the expertise of its staff and sub-contractor network and its modern production facilities, the company counts among the leaders in designing, building, assembling and commissioning highly complex ships and maritime installations.

Give Steel is one of Denmark's leading manufacturers and exporters of steel structures throughout Northern Europe. The company, founded in 1974, has almost 600 employees who design, plan, produce, and install load-bearing steel structures for contractors and developers. All steel structures are produced in Denmark in an ethically responsible, high-technology manufacturing environment that focuses on social responsibility and CO2-friendly production.



MACHINE PROFILE

MSF Pro series

- Working area 4,000 x 2,000 mm
- Cutting of pipes Ø 20 – 200 mm and hollow sections up to a length of 6,000 mm
- Laser bevel head for weld preparation up to 45° with auto-calibration feature (ACTG®)
- 6 kW fiber laser source
- Scanner for Additional Beveling Process (ABP)
- Automatic plate edge detection
- Automatic shuttle table
- Automatic loading, feeding and unloading of pipes



MACHINE PROFILE

DRM series

- Working area 12,000 x 3,000 mm
- Cutting of pipes Ø 100 – 2,700 mm up to a length of 12,000 mm
- Cutting of domes up to Ø 3,000 mm with a max. height of 790 mm
- Plasma rotator for weld preparation up to 50° with auto-calibration feature (ACTG®)
- Integrated 3D scanner + mScan technology for compensation of the production-related deviation of dome and pipe shapes by adjusting the generated cutting paths according to the true scanned shapes of materials
- 2D oxyfuel

The blend of technological expertise, many years of experience and personal advice is what makes the Lower Saxony company SEALPAC a unique supplier of comprehensive product packaging solutions for the food industry with freshness, optimal opening properties, hygiene and sustainability in the forefront.

The 1921 founded family-owned business STRUYF n.v. designs, engineers and manufactures shell & tube heat exchangers and custom process equipment. The company with more than 100 years of experience operates a 6000 m2 workshop in Oelegem, Belgium equipped with modern machinery, automated welding machines and lifting capacity up to 120 tons.



MACHINE PROFILE

CombiCut series

- Working area 24,000 x 3,000 mm

1. gantry

- Plasma rotator for weld preparation up to 50° with auto-calibration feature (ACTG®)
- Integrated scanner for Additional Beveling Process (ABP)
- 2x 2D oxyfuel

2. gantry

- Oxyfuel rotator with auto-calibration feature (ACTG®)
- Integrated scanner for Additional Beveling Process (ABP)
- 4x 2D oxyfuel

Bono Steel, based in South Africa, offers their clients forming and fabricating services since 2006. Over the years, the company has expanded its machine park to provide a wide range of plate and profile processing services such as plasma, laser and oxyfuel cutting, drilling, bending and rolling.

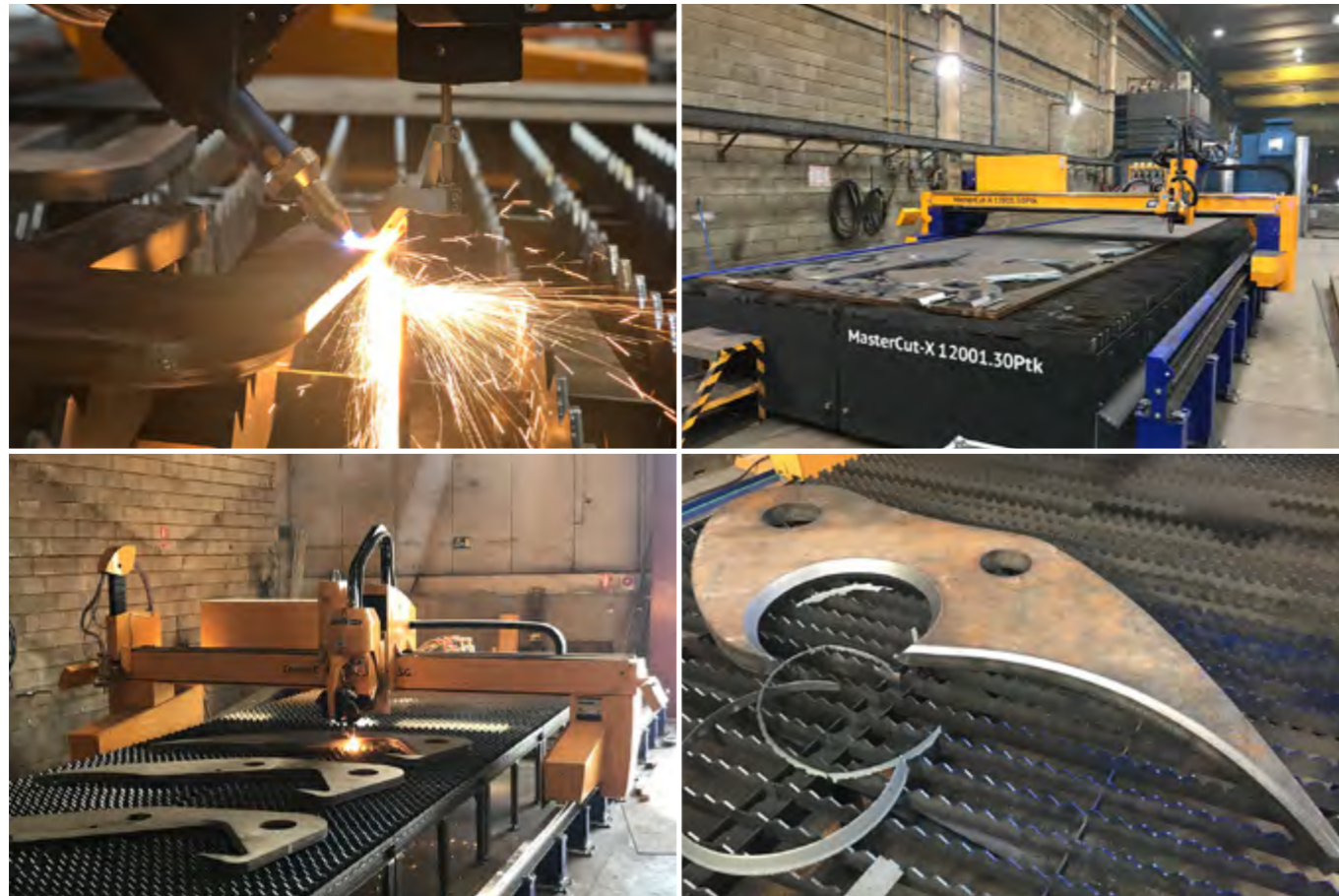


MACHINE PROFILE

CombiCut series

- Working area 12,000 x 3,000 mm
- 2D plasma
- 2D oxyfuel
- Drilling up to Ø 40 mm and tapping up to M33

The Indian subsidiary of Zamil Steel Buildings Saudi Arabia is a major player in the manufacture and assembly of prefabricated buildings and structural steel. Since the start of commercial production in February 2008, Zamil Steel India has delivered more than 2,000 projects with more than 15,000 buildings and an area of approximately 8 million square kilometers including petrochemical project structures, power plant structures, aircraft hangars and many more.



MACHINE PROFILE

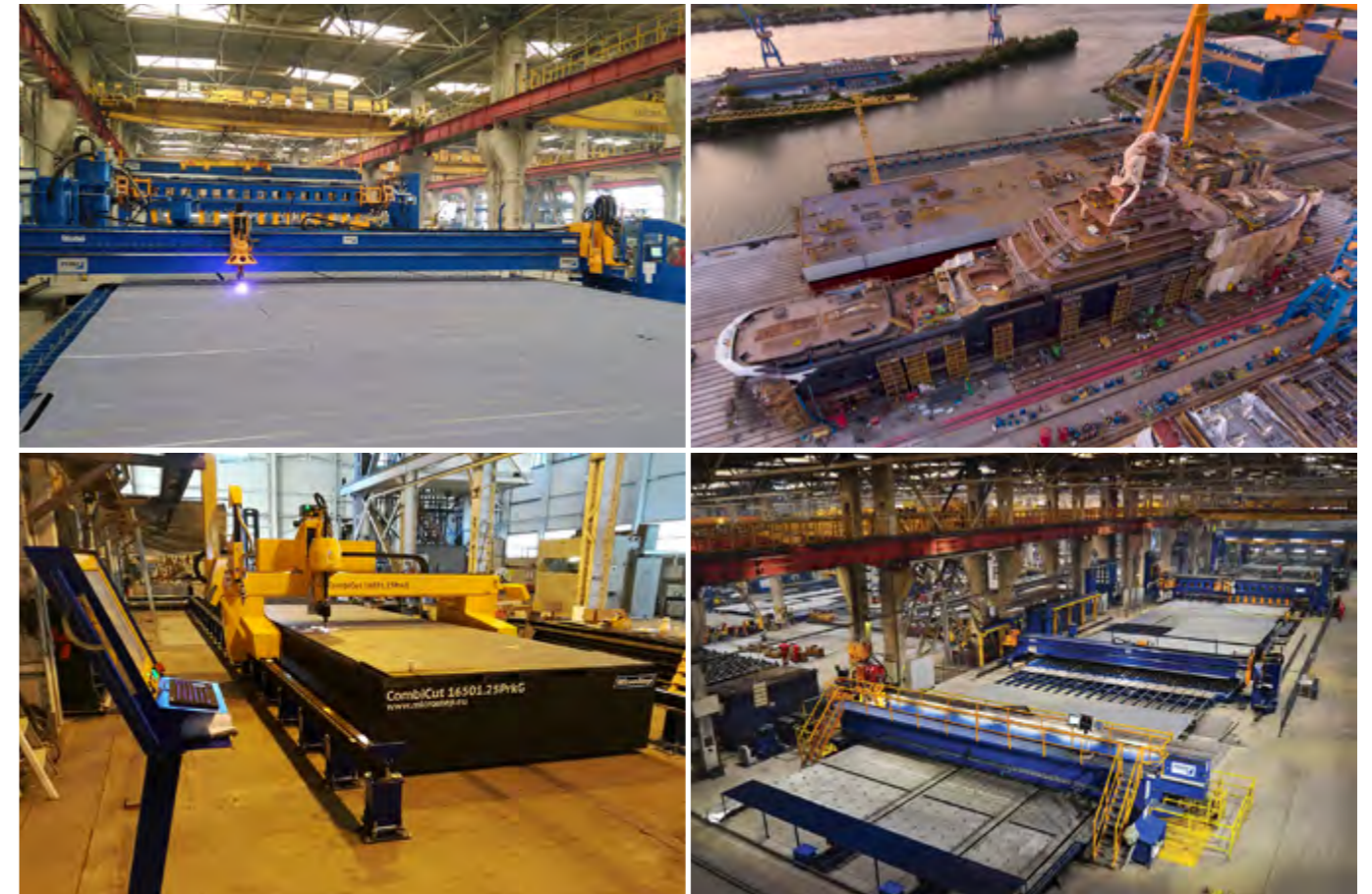
MasterCut series

- Working area 12,000 x 3,000 mm
- Plasma bevel head with auto-calibration feature (ACTG®)

CombiCut series

- Working area 12,000 x 3,000 mm
- Oxyfuel rotator with auto-calibration feature (ACTG®)
- Scanner for Additional Beveling Process (ABP)
- 2D oxyfuel

Solintal is a leading Spanish company in the design, manufacturing and supply of comprehensive tools for earthmoving and mining machinery as well as solutions for energy, engineering and recycling sectors. With facilities covering over 16,000 m², Solintal has gained recognition for being a modern company with philosophy based on innovation, improving of its services and adopting a personal approach towards its customers.



MACHINE PROFILE

CombiCut series (Norway)

- Working area 16,500 x 2,500 mm
- Plasma rotator for weld preparation up to 50° with auto-calibration feature (ACTG®)
- 2D oxyfuel

DRM-PL series (Romania)

- Working area 15,500 x 12,500 mm
- Plasma rotator for weld preparation up to 50° with auto-calibration feature (ACTG®)
- Inkjet marking
- Sand blasting unit for primer removal + Plasma marking
- Automatic plate edge detection
- Operator control booth on the gantry

VARD is one of the major global designers and shipbuilders of specialized vessels. Headquartered in Norway and with approximately 8,200 employees, the company operates shipbuilding facilities in Norway, Romania, Brazil and Vietnam. VARD develops power and automation systems, deck handling equipment, and vessel accommodation solutions, and provides design and engineering services to the global maritime industry.



MACHINE PROFILE

ProfileCut series

- Fully automatic beam cutting line
- Cutting of H, I, U, L beams with size range HE120A – HE450A and a length up to 12,000 mm
- 3D plasma rotator with tilting up to 120° for weld preparation on beams and pipes + auto-calibration feature (ACTG®)
- 3D scanner for scanning of beams
- Automatic loading, feeding and unloading of beams

HEM (of Hongxun Elevator Accessories Group) owns 4 production centers and has more than 1,100 employees. The enterprise is highly-technology-oriented and keen to invest in advanced equipment. The company was founded in 1979 and over time became a strong supplier of many famous elevator companies, such as HITACHI, OTIS, FUJI and others.



MACHINE PROFILE

MG series

- Working area 13,500 x 3,500 mm
- Plasma rotator for weld preparation up to 45° with auto-calibration feature (ACTG®)
- Inkjet marking

MG series

- Working area 13,500 x 3,500 mm
- Plasma rotator for weld preparation up to 45° with auto-calibration feature (ACTG®)
- 2x Inkjet marking

Neptune Shipyards BV is a maritime service provider specialized in workboats for the offshore and dredging markets. The services consist of building, repair, refit, maintenance and charter. The company offers a broad range of products and services in the shipbuilding and ship-trading sector including tugboats, specialized workboats, multipurpose pusher tugs, crew boats, survey boats and pontoons, which they deliver all over the world. The shipyards cuts its own steel components for the hulls, with enormous precision and speed.



MACHINE PROFILE

MSF Pro series

- Working area 14,000 x 3,000 mm
- Laser bevel head for weld preparation up to 45° with auto-calibration feature (ACTG®) + 8 kW fiber laser source
- Scanner for Additional Beveling Process (ABP)
- Inkjet marking
- Automatic nozzle changer
- Automatic plate edge detection
- Automatic shuttle table

For over 50 years, Officine Piccoli S.p.a. is a reliable and high quality reference point for sheet metal machining. The Verona based workshop offers laser, plasma and oxyfuel cutting, bending, deburring and processing of anti-wear and high yield strength steels to a variety of customers including manufacturers of trailer and lifting equipment, marble and scrap metal processing machines, steel constructions and equipment for the ecology sector.



MACHINE PROFILE

CombiCut series

- Working area 4,500 x 4,000 mm
- Plasma rotator for weld preparation up to 50° with auto-calibration feature (ACTG®)
- Oxyfuel rotator with auto-calibration feature (ACTG®)
- Drilling up to Ø 36 mm and tapping up to M33
- Vibration conveyor table

In its 100-year history, JOEST has evolved from a local Westphalian workshop into an international leader in the field of vibration technology and bulk material processing. The company supplies steel constructions to businesses in the foundry technology, chemical and food industries as well as in the raw materials and recycling sectors worldwide.



MACHINE PROFILE

MG series

- Working area 10,000 x 2,500 mm
- Cutting of pipes Ø 30 – 500 mm and hollow sections up to a length of 6,000 mm
- Plasma rotator for weld preparation up to 50° with auto-calibration feature (ACTG®)
- 2x 2D oxyfuel
- Drilling up to Ø 40 mm and tapping up to M33
- Belt conveyor table

Matisa Matériel Industriel S.A. is a global manufacturer of track construction and maintenance machines. Headquartered in Crissier, north of Lausanne, Switzerland, the company has subsidiaries in Europe, South America, Asia and Australia. The ECM 1 certified company was founded in 1945.



MACHINE PROFILE

MG series

- Working area 15,000 x 3,000 mm (underwater cutting)
- Plasma rotator for weld preparation up to 45° with auto-calibration feature (ACTG®)
- Waterjet rotator for weld preparation up to 45° with auto-calibration feature (ACTG®)
- 2D waterjet head with two nozzles
- Scanner for Additional Beveling Process (ABP)

Oy Flinkenberg Ab is a family-owned business established in the year 1921. The Flinkenberg Steel Service Center specializes in selling and processing steel plates. Production services consist of four cutting technologies – waterjet, laser, plasma and oxyfuel – as well as reprocessing and finishing. Processed parts are delivered directly to customer's welding and machining cells. The excellent combination of company's modern machinery and a production management system guarantees reliable, cost-efficient and high-quality services.



MACHINE PROFILE

PlasmaCutter + Robot

- Working area 500 x 3,600 mm
- Robotic arm with plasma torch for 2D plasma cutting
- Robotic arm with magnetic unloading system



MACHINE PROFILE

MG series

- Working area 15,000 x 3,000 mm
- Water table
- Machine encapsulated in a protective cabin with motorized opening

1. gantry

- Plasma rotator for weld preparation up to 50° with auto-calibration feature (ACTG®)
- Scanner for Additional Beveling Process (ABP)
- Drilling up to Ø 40 mm and tapping up to M33

2. gantry

- 2D waterjet
- 2D plasma

Altos Hornos de México S.A.B. de C.V. (AHMSA) is Mexico's largest steel plant. AHMSA operates a diversified industrial chain from iron ore and coal extraction to the production of various steel grades and related products. It currently operates at an annual rate of close to 5 million tons of liquid steel. Including its mining-related subsidiaries, AHMSA has a workforce of 19,000 employees.

True to their enterprise motto – the global leader in sustainable stainless steel – Outokumpu produce and supply high-quality stainless steel products with the emphasis on steel and scrap recycling to achieve reduction of carbon footprint for their customers. The Finish enterprise is a major stainless steel supplier with over 100 years of metal production experience. At Jyväskylä Plate Service Center, plasma and water jet cutting are used to produce uniquely tailored materials from customer drawings.



MACHINE PROFILE

MSF-P series

- Working area 6,000 x 2,000 mm
- Conveyor-type cutting table + decoiler

1. gantry

- 2D plasma
- Automatic plate edge detection

2. gantry

- 2D plasma
- Automatic plate edge detection

The family-run company OFAS (Officine Favero Attrezzi Stampati) is specialising in the production and supply of spare parts for the agricultural and construction industries as well as gardening equipment. To meet the ever-growing demand for its products from Italian and international clients, the company (whose founding dates back to the 1950's) equipped its production with state-of-the-art machinery that enabled them to offer valuable, high-quality products, each step in the production of which has been carefully followed with attention, expertise and efficiency.



MACHINE PROFILE

MSF Pro series

- Working area 4,000 x 2,500 mm
- 2D fiber laser – 4 kW
- Automatic plate edge detection
- Automatic shuttle table
- MSLoad for automatic loading/unloading of sheets and cut parts

Founded in 1925 in Gaggenau, Germany, the company Swarco Dambach GmbH is part of the international Swarco Group, a provider of products, systems, services and solutions for road marking, signage, traffic signaling and traffic management. The core competencies of Swarco Dambach GmbH include development, production, assembly and service of static signage systems – traffic signs, large and small signs of all kinds, traffic sign gantries, construction site signages and much more.



MACHINE PROFILE

PLS series

- Working area 28,500 x 3,500 mm
- Plasma rotator for weld preparation up to 45°
- Inkjet marking

OxyCut series

- Working area 12,000 x 3,000 mm
- 2D plasma
- 2D oxyfuel
- Inkjet marking

MG series

- Working area 28,500 x 3,500 mm
- Plasma rotator for weld preparation up to 50° with auto-calibration feature (ACTG®)
- Inkjet marking

MG series

- Working area 51,000 x 3,500 mm

1. gantry

- Plasma rotator for weld preparation up to 50° with auto-calibration feature (ACTG®)
- Inkjet marking

2. gantry

- Plasma rotator for weld preparation up to 50° with auto-calibration feature (ACTG®)
- Inkjet marking

For more than 130 years, Lürssen has been designing and building ships to comply with the highest quality standards of systematic, precise manufacturing. As a result, the most advanced watercrafts are delivered from various locations of the Lürssen Group worldwide – including large yachts, special ships or most up-to-date naval vessels. To satisfy the cutting requirements of high-end shipbuilding, 5 complex MicroStep machines were installed in Lürssen’s manufacturing sites at Lemwerder and Wolgast (Peene-Werft).



MACHINE PROFILE

PLS series

- Working area 27,000 x 3,000 mm
- 2D plasma
- 2D oxyfuel

MG series

- Working area 12,000 x 3,000 mm
- Plasma rotator for weld preparation up to 45° with auto-calibration feature (ACTG®)
- 2D plasma

MG series

- Working area 12,000 x 3,000 mm
- Plasma rotator for weld preparation up to 50° with auto-calibration feature (ACTG®)
- Scanner for Additional Beveling Process (ABP)
- Drilling up to Ø 40 mm and tapping up to M33

MG series

- Working area 12,000 x 6,000 mm
- 2 x 2D plasma

OxyCut series

- Working area 12,000 x 3,000 mm
- 4x G-multi station for stripe cutting with 3x 2D oxyfuel torches on each

CombiCut series

- Working area 18,000 x 3,000 mm
- Plasma rotator for weld preparation up to 50° with auto-calibration feature (ACTG®)
- 2D plasma

Klöckner Stahl- und Metallhandel GmbH is a German subsidiary of the global Klöckner & Co Group. Founded as early as 1906, Klöckner is the biggest producer-independent distributor of steel and metal in the combined markets of Europe and America, supplying more than 100,000 customers at over 140 locations in thirteen countries.



MACHINE PROFILE

DRM series

- Working area for sheets 6,000 x 2,500 mm
- Cutting of pipes \varnothing 100 – 2,000 mm and hollow sections up to a length of 6,000 mm
- Cutting of H, I, U beams up to HEA 1000 and a length of 12,000 mm
- Cutting of domes \varnothing 500 – 2,000 mm with a max. height of 600 mm
- 3D plasma rotator with tilting up to 120° for weld preparation on H-beams + auto-calibration feature (ACTG®)
- Oxyfuel rotator with auto-calibration feature (ACTG®)
- 3D scanner for beam & dome scanning and Additional Beveling Process (ABP)

Euro Gas Systems is a Romanian manufacturer of gas compressor packages. The ISO 9001 certified enterprise is an official packager/distributor for Ariel, 'Platinum Solution Provider' for Waukesha and OEM for Caterpillar and other major equipment brands, providing world-class compression to the European, Middle Eastern, African, Asian and CIS markets. Besides packaging of reciprocating gas compressors EGS's product portfolio covers gas-to-power solutions for the oil and gas industry, air-cooled heat exchangers (ACHE) and pressure vessels with PED and ASME certifications.



MACHINE PROFILE

MSF Pro series

- Working area 9,000 x 2,500 mm
- Laser rotator for weld preparation up to 45° with auto-calibration feature (ACTG®) + 6 kW fiber laser source
- Drilling up to \varnothing 20 mm and tapping up to M16
- Automatic plate edge detection
- Automatic shuttle table

CombiCut series

- Working area 24,000 x 3,400 mm
- Plasma rotator for weld preparation up to 50° with auto-calibration feature (ACTG®)
- Drilling up to \varnothing 36 mm and tapping up to M33
- 2D oxyfuel
- Belt conveyor table

KTS GmbH & Co. KG Technologiepark Stahl, a 2010 founded family-owned business, is a supplier and know-how partner for a variety of metalworking jobs. The service center produces high-quality steel products for industries ranging from construction machinery, agricultural machinery, heavy crane, roller coaster and heavy vehicle construction up to general mechanical engineering and energy technology.



MACHINE PROFILE

MG series

- Working area 39,000 x 3,500 mm
- Plasma rotator for weld preparation up to 50° with auto-calibration feature (ACTG®)
- Oxyfuel rotator with auto-calibration feature (ACTG®)
- Integrated scanner for Additional Beveling Process (ABP)
- Laser marking
- Inkjet marking
- Drilling up to Ø 40 mm and tapping up to M33
- Vibration conveyor table

MSF Max-C series

- Working area 38,000 x 3,500 mm
- Laser bevel head for weld preparation up to 45° with auto-calibration feature (ACTG®) + 15 kW fiber laser source with beam modulation feature
- Integrated scanner for Additional Beveling Process (ABP)
- Laser marking
- Drilling up to Ø 30 mm and tapping up to M24
- Automatic plate edge detection
- Automatic nozzle changer
- Vibration conveyor table
- Mobile safety capsule around the gantry with integrated laser source and control system

BlueScope Distribution is a market leading steel and aluminium distributor and solutions provider in Australia, supporting their customers with finished components ready for assembly and manufacture. With a national network of branches across metro locations and major regional towns, the company helps co-ordinate a full suite of product, processing and project management requirements. It is a part of BlueScope group of businesses, servicing a wide range of industries across 16 countries.



MACHINE PROFILE

MG series

- Working area 13,000 x 3,500 mm
- Oxyfuel rotator with auto-calibration feature (ACTG®)

MG series

- Machine integrated with MSLoop system
- Working area 13,000 x 3,500 mm
- Plasma rotator for weld preparation up to 50° with auto-calibration feature (ACTG®)

DRM-PL series

- Machine integrated with MSLoop system
- Working area 13,000 x 3,500 mm
- Sand blasting unit for primer removal + Plasma marking
- Inkjet marker with barcode and data matrix marking feature

MSLoop system

- Automated synchronized grate exchange system
- 3 grates with working area 13,000 x 3,500 mm each

Australian Naval Infrastructure Pty Ltd (ANI) is a nation-building commitment by the Government of Australia and sees the establishment of state-of-the-art infrastructure for the domestic manufacture of world class naval vessels.



MACHINE PROFILE

CPCut series

- Cutting of pipes Ø 100 – 1,500 mm up to a length of 12,000 mm
- 3D plasma rotator with tilting up to 90° for weld preparation on pipes up to 45°
- Micro-percussion marking of pipes

FINOW Rohrsysteme GmbH has a long tradition as a steel-processing business. The former Franz Seiffert AG company produces high-quality components for the construction of power plants as well as chemical and industrial plants. Core expertise of the company is inductive bending and welding of piping elements. Since 2007 the company is part of Kraftanlagen Gruppe.



MACHINE PROFILE

Fully automatic sheet cutting line consisting of 8 cutting gantries, an automatic crane, 2 input wagons and 2 output shuttle systems

8x MG series

- Working area 24,000 x 3,000 mm
- Plasma rotator for weld preparation up to 45° with auto-calibration feature (ACTG®)
- Fully automatic sheet cutting line consisting of 8 cutting gantries, an automatic crane, 2 input wagons and 2 output shuttle systems
- Automatic plate edge detection

2x MG series

- Working area 24,000 x 3,000 mm
- Plasma rotator for weld preparation up to 45° with auto-calibration feature (ACTG®)
- Fully automatic sheet cutting line consisting of 8 cutting gantries, an automatic crane, 2 input wagons and 2 output shuttle systems

SUNWARD is one of the leading enterprises for earthmoving and excavation machinery in China, holding more than 1,000 patents, with export to over 100 countries worldwide. The core competencies of the company lay in underground engineering, excavation, rock drilling, mining, hydraulics and general aviation. The company's portfolio comprises of over 200 products in several industrial areas.



MACHINE PROFILE

CombiCut series

- Working area 24,000 x 3,000 mm

1. gantry

- Plasma rotator for weld preparation up to 50° with auto-calibration feature (ACTG®)
- 2x 2D oxyfuel
- Drilling up to Ø 40 mm and tapping up to M33

2. gantry

- 3x 2D oxyfuel
- Drilling up to Ø 40 mm and tapping up to M33
- Micro-percussion marking

Prinzing Brennschneidtechnik GmbH & Co. KG located in Gingen an der Fils in southwest of Germany specializes in the production of custom parts using plasma and oxyfuel cutting technologies. Annealing, sandblasting, edging and welding are all part of the extensive range of Prinzing's services that small locksmiths as well as large companies can rely on thanks to the company's speed and flexibility in manufacturing.



MACHINE PROFILE

13x AquaCut series

- Working area 3,000 x 2,000mm
- 2D waterjet

- Working area 2,000 x 3,000 mm
- 2x 2D waterjet

- Working area 2,000 x 3,500 mm
- 2x 2D waterjet

3x

- Working area 1,200 x 2,500 mm
- 2D waterjet

- Working area 1,500 x 2,000 mm
- 2D waterjet

- Working area 1,500 x 2,000 mm
- 2x 2D waterjet

- Working area 1,500 x 2,500 mm
- 2x 2D waterjet

- Working area 6,000 x 2,500 mm
- 2x 2D waterjet

- Working area 6,000 x 3,000 mm
- 2x 2D waterjet

- Working area 3,000 x 4,000 mm
- 2x 2D waterjet

- Working area: 2,000 x 3,000 mm
- 2x Waterjet rotator in parallel operation up to 45° with auto-calibration feature (ACTG®)

3x WaterCut series

- Working area 2,000 x 4,000 mm
- 2x 2D waterjet

- Working area 3,000 x 4,000 mm
- 2x 2D waterjet

- Working area 6,000 x 3,000 mm
- 2x 2D waterjet

AWAC was established in 1990 with the aim of offering high quality waterjet job cutting as well as sales of cutting machines. Located in 4 sites across the Czech Republic, the company directly employs 75 people and another 30 in the subsidiary AB Jet s.r.o. Offered cutting range with thicknesses 0.1 – 250 mm reaches up to plate dimension 3 x 6 m and pressure 6,000 bar, both 2D and 3D cutting (up to 60°) with vertical edge compensation. With its 20+ machines, AWAC ranks among the largest waterjet job shops in Central Europe.



MACHINE PROFILE

MSF Pipe-T series

- Cutting of pipes \varnothing 26 – 220 mm and hollow sections up to a length of 3,000 mm
- Laser bevel head for weld preparation up to 45° with auto-calibration feature (ACTG®)
- Scanner for scanning of pipes and hollow sections
- 2 kW fiber laser source



MACHINE PROFILE

PLS series

- Working area 9,000 x 2,500 mm
- Cutting of pipes \varnothing 30 – 300 mm and hollow sections up to a length of 9,000 mm
- Plasma with 90° automatic tilting in Y axis

MG series

- Working area 7,500 x 2,500 mm
- 2D plasma
- Drilling up to \varnothing 22 mm and tapping up to M16

DRM series

- Cutting and trimming of domes \varnothing 500 – 3,200 mm up to a height of 760 mm
- 3D plasma rotator with tilting 90° for weld preparation on domes

MasterCut series

- Working area 8,000 x 2,500 mm
- 2D plasma
- Special marking via felt pen

Bosch Thermotechnology is the biggest producer of heating technologies in the world. The company offers solutions for room climate, domestic hot water and decentralized energy management requirements – their high efficient technologies and products, such as boilers and heat pumps use in many cases renewable energies and make a significant contribution to implementing the energy transition.

Feldbinder is one of the largest European manufacturers of special vehicles in the commercial vehicle industry. Founded in 1975, the company manufactures a variety of silo vehicles, truck tankers, freight cars and containers made of aluminum and stainless steel for the transport of liquid, granulated and powdery substances.

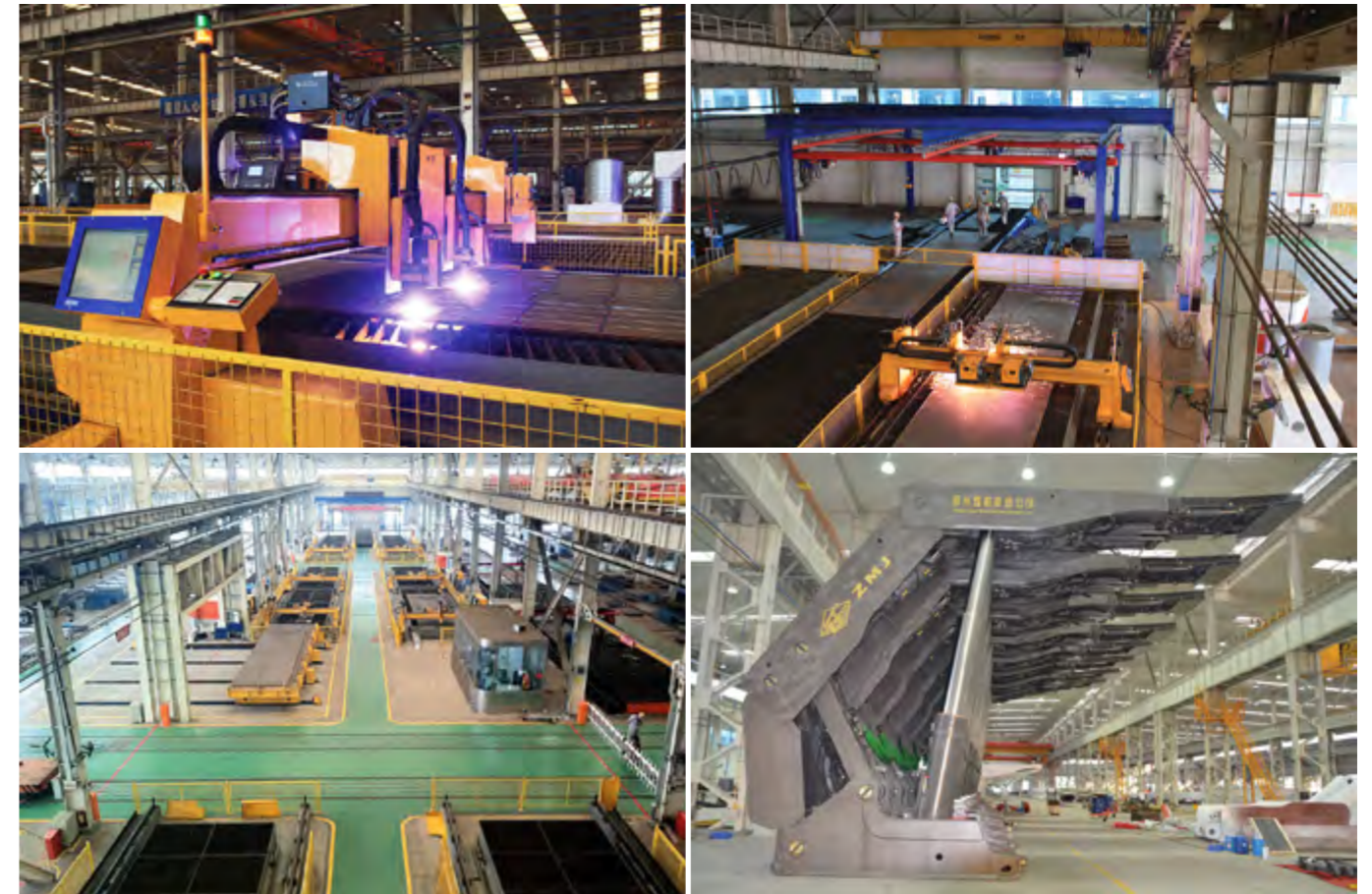


MACHINE PROFILE

DRM series

- Working area for sheets 14,000 x 6,000 mm
- Cutting and trimming of domes Ø 500 – 5,500 mm with a max. height of 1,500 mm
- 3D plasma rotator with tilting up to 120° for weld preparation on domes and plates + auto-calibration feature (ACTG®)
- 3D scanner + mScan technology for compensation of the production-related deviation of dome shape by adjusting the generated cutting paths according to the true scanned shape of dome
- Micro-percussion marking

Being a specialist for domes and special pressed parts, Slawinski & Co. GmbH has been supplying tailored solutions for small businesses as well as global corporations for more than 100 years. The company relies on its long-standing experience and innovative production machinery. Each supplied dished end is a precisely manufactured original that finds its application in nuclear power plant construction or in transport of chemical liquids.



MACHINE PROFILE

Fully automatic sheet cutting line consisting of 10 cutting gantries, an automatic crane, an input wagon and 2 output conveyors

8x CombiCut series

- Working area 28,000 x 3,000 mm
- 2x 2D plasma
- Inkjet marking
- Automatic plate edge detection

2x CombiCut series

- Working area 12,600 x 2,600 mm
- 2x 2D plasma
- Automatic plate edge detection

Standalone machines:

CombiCut series

- Working area 28,000 x 7,000 mm

- 2x 2D plasma

MG series

- Working area 28,000 x 2,800 mm
- Plasma rotator for weld preparation up to 50° with auto-calibration feature (ACTG®)
- 2D plasma
- Scanner for Additional Beveling Process (ABP)

2x MG series (double gantry)

- Working area 38,400 x 5,600 mm
- Plasma rotator for weld preparation up to 50° with auto-calibration feature (ACTG®)
- 2D plasma
- Scanner for Additional Beveling Process (ABP)

2x MG series (double gantry)

- Working area 40,000 x 5,200 mm
- 2x 2D plasma

The 1958 established state-owned company ZMJ is China's leading manufacturer of coal mining and excavating equipment with a domestic market share of over 45%. As one of the few manufacturers in China the company is producing 3 of the 4 components of a complete coal mining system: hydraulic roof supports, armored-face conveyors and roadheaders. ZMJ's client base includes the biggest names among Chinese coal mining companies as well as foreign companies.



MACHINE PROFILE

MSF Pro series

- Working area 12,000 x 3,000 mm
- Laser bevel head for weld preparation up to 45° with auto-calibration feature (ACTG®)
- 2D fiber laser
- 6 kW fiber laser source
- Automatic shuttle table

MSF Max series

- Working area 12,000 x 3,000 mm with flexible working length in the range 6,000 – 12,000 mm
- Laser bevel head for weld preparation up to 45° with auto-calibration feature (ACTG®) + 8 kW fiber laser source
- 2D fiber laser – 6 kW
- Mobile telescopic safety cabin with integrated laser sources and control system

MG series

- Working area 12,000 x 3,000 mm
- Plasma rotator for weld preparation up to 50° with auto-calibration feature (ACTG®)
- Scanner for Additional Beveling Process (ABP)
- Inkjet marking

ADQ is the Italian leader in distribution and pre-processing of heavy plates and coils in high quality steel grades for a great variety of industrial applications. Thanks to the long-established relationships with some of the main European steel producers, ADQ can supply a complete and up-to-date range of plates in commercial sizes or pre-processed according to customer's request including quality and production certificates.



MACHINE PROFILE

MG series

- Working area 12,000 x 3,500 mm
- Cutting of domes Ø 500 – 3,500 mm with a max. height of 950 mm
- Plasma rotator for weld preparation up to 50° with auto-calibration feature (ACTG®)
- 3D scanner + mScan technology for compensation of the production-related deviation of dome shape by adjusting the generated cutting paths according to the true scanned shape of dome

GEA is one of the largest suppliers for the food processing industry and a wide range of other industries. The international technology group focuses on process technology, components and sustainable energy solutions for sophisticated production processes in various end-user markets. The GEA Brewery Systems GmbH takes care of the brewing technology and covers the complete brewing process – from the mill to the valve manifold of the bright beer tanks.



MACHINE PROFILE

DRM series

- Working area 3,500 x 7,000 mm
- Cutting and trimming of domes Ø 500 – 5,500 mm with a max. height 1,500 mm
- 3D plasma rotator with tilting up to 120° for weld preparation on domes + auto-calibration feature (ACTG®)
- 3D scanner + mScan technology for compensation of the production-related deviation of dome shape by adjusting the generated cutting paths according to the true scanned shape of dome

MG series

- Working area 12,000 x 3,500 mm
- Plasma rotator for weld preparation up to 50° with auto-calibration feature (ACTG®)

CombiCut series

- Working area 12,000 x 4,000 mm
- Plasma rotator for weld preparation up to 50° with auto-calibration feature (ACTG®)



MACHINE PROFILE

MicroCut series

- Working area 2,000 x 1,000 mm
- 2D plasma

Founded in 1963, Automobili Lamborghini is headquartered in Sant'Agata Bolognese in the north east of Italy. The company ranks among world's top-class super sports cars manufacturers. With more than 120 dealers worldwide, Automobili Lamborghini is building on a succession of its dynamic and elegant super sports cars.



MACHINE PROFILE

Automated sheet cutting line consisting of 6 cutting machines with grate shuttle system

6x MG series

- Working area 12,000 x 2,200 mm
- Plasma rotator for weld preparation up to 50° with auto-calibration feature (ACTG®)
- Automatic plate edge detection

Standalone machines:

3x MG series

- Working area 24,000 x 3,000 mm
- Plasma rotator for weld preparation up to 50° with auto-calibration feature (ACTG®)

MG series

- Working area 14,000 x 3,500 mm
- 2x Plasma rotator for weld preparation up to 50° with auto-calibration feature (ACTG®)
- Automatic shuttle table



MACHINE PROFILE

MSF Pro series

- Working area 6,000 x 3,000 mm
- 2D fiber laser – 6 kW
- Automatic plate edge detection
- Automatic shuttle table
- MSLoad for automatic loading of sheets and unloading of cut parts with 3 shuttle grate positions

CombiCut series

- Working area 15,000 x 3,000 mm
- Plasma rotator for weld preparation up to 50° with auto-calibration feature (ACTG®)

CombiCut series

- Working area 24,000 x 3,000 mm
- 2D plasma

Founded in 1992, Zoomlion Heavy Industry Science & Technology Co., Ltd. is mainly engaged in developing and manufacturing major high-tech equipment in the areas of engineering industry and agricultural industry. With more than 20 years of innovation and development, the company is now a global enterprise possessing 10 major categories and 56 product lines, as well as nearly 600 leading products. Zoomlion is the first Chinese construction machinery company to be listed on both Shenzhen and Hong Kong stock exchanges.

The steel service center MTL was founded in 1977 as Metaltaglio and since 2013 has been part of the ISAF Group of 12 steel processing companies operating across Italy. MTL's core competencies include oxyfuel, plasma and laser cutting, bending of thin and thick plates, machining, as well as finishing of products with automatic deburring, sandblasting and shot blasting. Additionally, the company specializes in medium and heavy metal carpentry.



MACHINE PROFILE

EasyCut Series

- Working area 12,000 x 3,000 mm
- 2D plasma
- 2x 2D oxyfuel

DRM Series

- Working area for sheets 12,000 x 3,000 mm
- Cutting of pipes \varnothing 100 – 1000 mm and hollow sections up to length of 12,000 mm
- Cutting of H, I, U beams up to HEB 1000 and a length of 12,000 mm
- 3D plasma rotator with tilting up to 120° for weld preparation on H-beams + auto-calibration feature (ACTG®)
- 3D scanner for beam scanning and Additional Beveling Process (ABP)
- Inkjet marking
- 2D oxyfuel
- Drilling up to \varnothing 40 mm and tapping up to M33

Gotech's main field of operations includes upgrading, construction and overhauls of power and industrial equipment as well as industrial construction services and building turnkey industrial plants. The company is also focused on steel structures, process and power systems, industrial and gas systems, pipelines, environmental systems, incineration plants, flue gas desulphurisation and denitrification, flue gas cleaning and boiler installation.



MACHINE PROFILE

MSF Pro series

- Working area 12,000 x 3,000 mm
- Laser bevel head for weld preparation up to 45° with auto-calibration feature (ACTG®) + 12 kW fiber laser source
- Automatic nozzle changer
- Automatic plate edge detection
- Automatic shuttle table

The Brazilian boiler and pressure vessels manufacturer Mettalica Caldeiraria Pesada LTDA, founded in 1999, operates in the field of construction of capital goods for the basic industry, providing a wide range of equipment for producers in chemical, petrochemical, pharmaceutical, food, steel, mining, energy, pulp and paper, sugar-alcohol and oil and gas sectors.



MACHINE PROFILE

MG series (Netherlands)

- Working area 18,000 x 3,000 mm
- Plasma rotator for weld preparation up to 45° with tool adjustment station
- 2D oxyfuel

MG series (Poland)

- Working area 18,000 x 3,000 mm
- Plasma rotator for weld preparation up to 45° with auto-calibration feature (ACTG®)
- Inkjet marking

MG series (China)

- Working area 18,000 x 3,000 mm
- Plasma rotator for weld preparation up to 45° with auto-calibration feature (ACTG®)

MG series (Romania)

- Working area 12,000 x 3,000 mm
- Plasma rotator for weld preparation up to 45° with auto-calibration feature (ACTG®)
- Inkjet marking

MicroMill series (Romania)

- Working area 3,000 x 1,500 mm
- 2.5D routing

The globally operating shipyard group Damen started out in 1927 as a family-owned company amongst the shipbuilding community on the River Merwede in the Netherlands. Today, more than 7,000 vessels later, the enterprise operates over 30 yards and Service Hubs all over the world, covering all areas from newly built vessels through ship repair and conversion to supply of marine components and related services.



MACHINE PROFILE

AquaCut series + Robot

- Fully automated working cell
- Working area: 4 cutting zones with rotary hydraulic holders for positioning of products
- 2D waterjet cutting simultaneously with 2 tool stations
- Robotic manipulator
- Automatic waste removal via conveyor in water tank
- Rinsing chamber for washing of products
- Drying chamber for drying of products by air blow
- 50 HP high pressure pump

The German-based sanitary and tableware producer Villeroy & Boch is a highly innovative company with representation in over 125 countries. Since its foundation in 1748, the company's strong roots in European culture have shaped the development of a premium brand that is now a household name all over the world. Mondial SA serves as the company's production facility in Romania.



**WACKER
NEUSON**

Wacker Neuson Kragujevac d.o.o. (Serbia)
Construction Equipment & Machinery



MACHINE PROFILE

MG series

- Working area 6,000 x 3,000 mm
- Cutting of pipes Ø 30 – 300 mm and hollow sections up to a length of 6,000 mm
- Plasma rotator for weld preparation up to 50° with auto-calibration feature (ACTG®)
- 2D oxyfuel
- Drilling up to Ø 30 mm and tapping up to M20

MG series

- Working area 4,000 x 2,000 mm
- Plasma rotator for weld preparation up to 50° with auto-calibration feature (ACTG®)
- Automatic shuttle table with vibration conveyor

KONECRANES
Lifting Businesses™

ZAO Konecranes (Ukraine)
Crane & Lifting Systems



MACHINE PROFILE

MG series

- Working area 24,000 x 3,500 mm
- Plasma rotator for weld preparation up to 50° with auto-calibration feature (ACTG®)

Wacker Neuson is one of the leading international manufacturers of concrete technology, compaction equipment, construction site technology and compact construction machinery with more than 40 subsidiaries, 140 sales and service centers and 12,000 sales and service points worldwide.

As a part of the Konecranes world-leading group of Lifting Businesses, ZAO Konecranes is the leading producer of cranes and crane equipment in Eastern Europe and the CIS countries. The company specializes in manufacturing of bridge, gantry and special purpose cranes as well as manufacturing of lifting and handling equipment, production of metal constructions and wholesale industrial equipment.



MACHINE PROFILE

PLS series

- Working area 9,000 x 2,500 mm
- Plasma rotator for weld preparation up to 45°

PLS series

- Working area 9,000 x 2,500 mm
- Plasma rotator for weld preparation up to 45°
- 2D oxyfuel

CombiCut series

- Working area 12,000 x 3,000 mm
- 2D plasma
- 7x 2D oxyfuel

9x CombiCut series

- Working area 12,000 x 3,000 mm
- Plasma rotator for weld preparation

up to 50° with auto-calibration feature (ACTG®)

2x CombiCut series

- Working area 6,000 x 3,000 mm
- Plasma rotator for weld preparation up to 50° with auto-calibration feature (ACTG®)

MasterCut series

- Working area 6,000 x 3,000 mm
- 2D plasma

CombiCut series

- Working area 6,000 x 2,000 mm
- Plasma rotator for weld preparation up to 50° with auto-calibration feature (ACTG®)

2x CombiCut series

- Working area 6,000 x 3,000 mm
- 2D plasma

CombiCut series

- Working area 12,000 x 3,000 mm
- 2D plasma

CombiCut series

- Working area 6,000 x 3,000 mm
- 2D plasma
- Drilling up to Ø 40 mm and tapping up to M24



MACHINE PROFILE

DRM-PL series

- Working area 18,000 x 16,000 mm
- Oxyfuel rotator for weld preparation up to 50° with auto-calibration feature (ACTG®)
- Inkjet marking
- Sand blasting unit for primer removal + Plasma marking
- Operator platform with MMI console on the gantry

MG series

- Working area 52,500 x 3,500 mm

1. gantry

- Plasma rotator for weld preparation up to 50° with auto-calibration feature (ACTG®)
- Inkjet marking

2. gantry

- Plasma rotator for weld preparation up to 50° with auto-calibration feature (ACTG®)
- Laser marking

EasyCut series

- Working area 16,500 x 3,000 mm
- 4x 2D oxyfuel
- Plasma marking

German Naval Yards Kiel is specializing in the design and construction of naval vessels such as frigates, corvettes and patrol boats as well as in the construction of superyachts. The company combines know-how from more than 180 years of shipbuilding tradition and has a unique shipyard infrastructure with one of the largest dry docks in Europe in operation.



MACHINE PROFILE

MG series

- Working area 14,000 x 4,500 mm
- Plasma rotator for weld preparation up to 45° with auto-calibration feature (ACTG®)
- Micro-percussion marking
- 2D oxyfuel
- Automatic shuttle table (third party)

Engicon nv (Geldof) is a leading European supplier of integrated steel solutions for the storage, handling and processing of bulk liquids, solids and gasses. The company has a strong reputation in the realization of storage tank projects, pressure vessels, dry bulk storage and handling installations, and diverse, other engineered solutions that often require a combination of wide-ranging technical competencies.

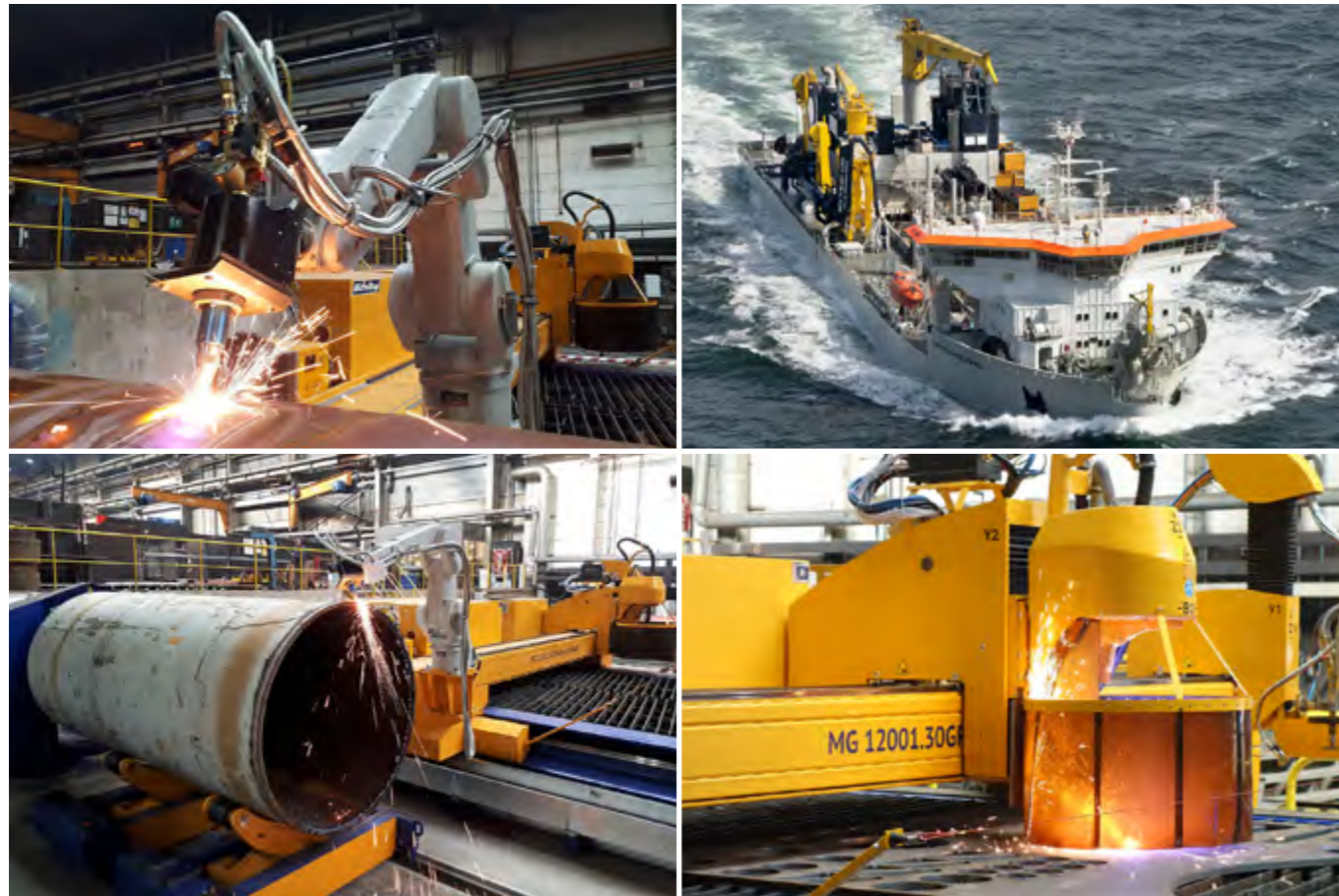


MACHINE PROFILE

DRM-PL series

- Working area 15,000 x 13,000 mm
- Plasma rotator for weld preparation up to 45° with auto-calibration feature (ACTG®)
- Scanner for detection of weld seam position
- Inkjet marking
- Sand blasting unit for primer removal + Plasma marking
- Automatic plate alignment
- Operator platform with MMI console on the gantry

Irving Shipbuilding Inc. is one of the most advanced shipbuilders in North America. Headquartered in Halifax, Nova Scotia, the company specializes in the efficient construction, manufacture, conversion and maintenance of ships and offshore platforms. Irving Shipbuilding Inc. is a member of the J. D. Irving Limited Business Group, a family owned business with offices in Canada and the United States. As Canada's chosen shipbuilder, Irving Shipbuilding is also working for the Royal Canadian Navy.



MACHINE PROFILE

MG series + Robot

- Working area 12,000 x 3,000 mm
- Cutting of pipes Ø 100 – 2,000 mm up to a length of 12,000 mm
- Plasma rotator for weld preparation up to 50° with auto-calibration feature (ACTG®)
- 2D oxyfuel
- Robotic arm with oxyfuel technology for bevel cutting of pipes
- Laser scanner for measuring of the real shape of pipe

Jan De Nul Group is a leading expert in dredging and marine construction activities, as well as in specialized services for the offshore industry of oil, gas and renewable energy. These core marine activities are further enhanced by Jan De Nul Group's in-house civil and environmental capabilities offering clients a complete package solution.



MACHINE PROFILE

CombiCut series

- Working area for sheets 15,000 x 2,500 mm
- Cutting of pipes Ø 30 – 1,000 mm and hollow sections up to a length of 12,000 mm
- Cutting and trimming of domes Ø 500 – 5,000 mm with a max. height 1,100 mm
- Plasma rotator for weld preparation up to 50° with auto-calibration feature (ACTG®)
- Oxyfuel rotator with auto-calibration feature (ACTG®)
- 3D scanner + mScan technology for compensation of the production-related deviation of dome shape by adjusting the generated cutting paths according to the true scanned shape of dome
- Drilling up to Ø 36 mm and tapping up to M33
- Additional Beveling Process (ABP)

The Spanish metalworking company Caldererías Indálicas, established in 1993, offers all-round services including engineering, manufacturing, assembly, maintenance and repair of metal structures, boilers, pressure vessel equipment and industrial plants. With a team of over 450 employees, the company operates workshops and offices in Spain as well as a subsidiary in North Africa headquartered in Morocco.



MACHINE PROFILE

CombiCut series

- Working area 34,500 x 4,000 mm
- 2x 2D plasma
- Micro-percussion marking
- Automatic plate edge detection
- Operator platform with MMI console on the gantry

CombiCut series

- Working area 48,000 x 4,500 mm

1. gantry

- 2x 2D plasma
- Micro-percussion marking
- Automatic plate edge detection
- Operator platform with MMI console on the gantry

2. gantry

- 2x 2D plasma
- Micro-percussion marking
- Automatic plate edge detection
- Operator platform with MMI console on the gantry



MACHINE PROFILE

PipeCut series

- Cutting of pipes \varnothing 48 – 610 mm and hollow sections up to a length of 12,000 mm
- Cutting of domes up to \varnothing 1,200 mm and a height of 350 mm
- Plasma rotator for weld preparation up to 45° with auto-calibration feature (ACTG®)

2x PipeCut series

- Cutting of pipes \varnothing 48 – 700 mm and hollow sections up to a length of 12,000 mm
- Cutting of domes up to \varnothing 1,600 mm and a height of 434 mm
- Plasma rotator for weld preparation up to 45° with auto-calibration feature (ACTG®)

Founded in 1991, Gree Electric Appliances Inc. is the world's largest manufacturer of air conditioning systems. The Chinese company is part of the Gree Group, which ranges from residential air conditioning and central air conditioning systems to air source water heaters, smartphones, home appliances and refrigerators. Small houses as well as large international projects such as the National Stadium of South Africa, or the Expo 2015 in Milan are air-conditioned using Gree's technology.



MACHINE PROFILE

DRM series

- Working area for sheets 6,000 x 3,000 mm
- Cutting of pipes Ø 100 – 1,500 mm and hollow sections up to a length of 6,000 mm
- Cutting of domes Ø 500 – 4,000 mm with a max. height of 1,100 mm
- 3D plasma rotator with tilting up to 120° for dome cutting + auto-calibration feature (ACTG®)
- 3D scanner for dome scanning and Additional Beveling Process (ABP)

Accessoires Tubes Chaudrones (ATC) Aulagner is a French manufacturer of high-end pressure vessels and boilers with materials such as nickel alloys, special stainless steels, zirconium, copper, titanium and aluminum. The industrial boiler-making SME specializes in equipment operating under high pressure (up to 600 bars) designed for environments prone to high-temperature induced corrosion. It supplies demanding sectors such as chemicals, petrochemicals, pharmaceuticals, armaments and nuclear.



MACHINE PROFILE

PLS series

- Working area 12,000 x 2,500 mm
- Plasma rotator for weld preparation up to 45°

PLS series

- Working area 12,000 x 2,500 mm
- 2D plasma

EasyCut series

- Working area 10,500 x 2,500 mm
- 2D plasma

MSF Pro series

- Working area 4,000 x 2,000 mm
- 2D fiber laser – 4 kW

- Automatic plate alignment
- Automatic shuttle table

MG series

- Working area 24,000 x 3,500 mm
- Plasma rotator for weld preparation up to 50° with auto-calibration feature (ACTG®)
- 2D plasma
- Scanner for Additional Beveling Process (ABP)
- Micro-percussion marking

Situated in a heart of Mpumalanga, South Africa, GK Steel actively services the mining and agricultural sectors. Business of the company is divided into two main sections: steel trading and steel services such as cutting, bending and rolling. GK Steel's effective distribution channels, knowledgeable staff and logistical services successfully cater to the steel needs of mines and fabricators both across South Africa and internationally.



MACHINE PROFILE

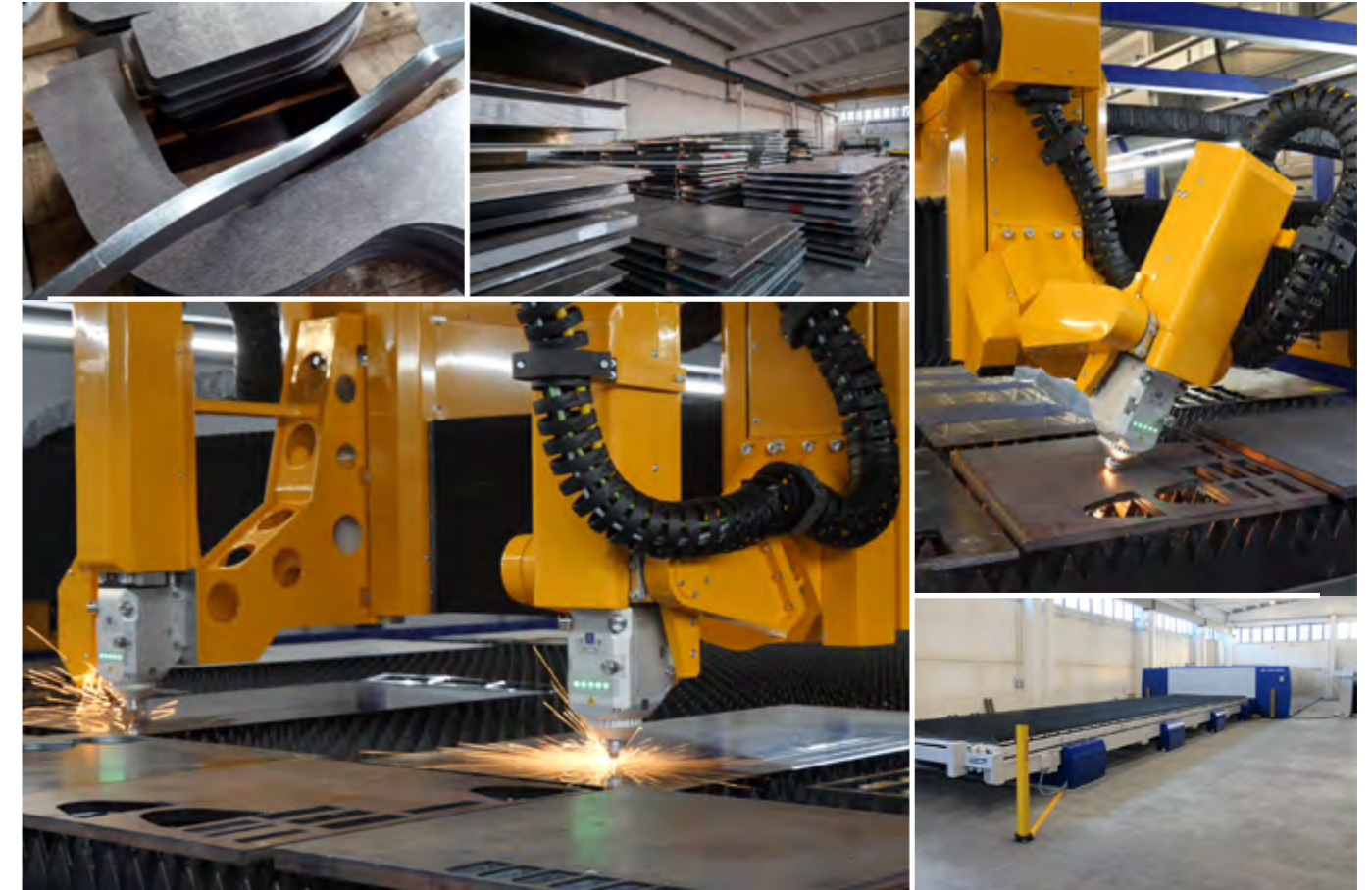
PLS series

- Working area 4,500 x 2,000 mm
- Cutting of pipes Ø 100 – 500 mm up to a length of 4,500 mm
- Plasma rotator for weld preparation up to 45°
- 2D oxyfuel

AquaCut series

- Working area 6,000 x 3,000 mm
- Cutting of pipes Ø 30 – 500 mm up to a length of 5,000 mm
- 2D plasma
- Waterjet rotator up to 45° with auto-calibration feature (ACTG®)
- 2D waterjet

Striegel Maschinen- und Metallbau is a provider of high-pressure water jet cutting, plasma cutting, CNC turning and milling as well as welding of components and assemblies for a wide variety of industries such as pharmaceutical industry, food and beverage industry, tunnel technology or heavy engineering. The company's services reach from manufacturing of individual pieces to series of parts, design and production support.



MACHINE PROFILE

MSF Pro series

- Working area 12,000 x 2,500 mm
- 2x 2D fiber laser – 4 kW
- Automatic shuttle table

MSF Pro series

- Working area 14,000 x 3,000 mm
- Laser bevel head for weld preparation up to 45° with auto-calibration feature (ACTG®) + 10 kW fiber laser source
- 2D fiber laser – 6 kW
- Automatic plate edge detection
- Automatic shuttle table

MG series

- Working area 15,000 x 3,000 mm
- Plasma rotator for weld preparation up to 50° with auto-calibration feature (ACTG®)
- Drilling up to Ø 40 mm and tapping up to M33

The ISO 9001:2008 certified company has been operating for 20 years as a service center for processing of sheet metal – the competences include sub-supply of products from mild steel, stainless steel or electro-galvanized steel, produced by means of laser cutting, plasma cutting, punching and bending. CACCIN's modern 5,000 m² production area holds equipment able to process sheet metals with sizes up to 14 x 3 m and thicknesses up to 30 mm.



MACHINE PROFILE

3x MG series

- Working area 18,000 x 2,500 mm
- Plasma rotator for weld preparation up to 45° with auto-calibration feature (ACTG®)
- 2x 2D oxyfuel
- Drilling up to Ø 40 mm and tapping up to M24



MACHINE PROFILE

DRM series

- Working area 28,000 x 3.600 mm
- Drilling up to Ø 50 mm and tapping up to M30
- Inkjet marking

The Russian division of the Texas (US) based National Oilwell Varco concern has been offering robust innovative solutions to answer the challenges of Russia's complex oil and gas industries since 1994. A huge selection of products comes across its three segments: NOV Rig Systems, NOV Wellbore Technologies and NOV Completion & Production Solutions.

ZAO Kurganstalmost is Russia's leading enterprise in manufacturing of bridge steel constructions. With an annual output of 65,000 tons the company covers 25% of Russia's bridge construction market. The basic competitive advantage of the company is manufacturing of complex steel constructions for individual projects. Bridges manufactured at the plant in Kurgan can be found in cities from the Far East to Europe. The company participated in the construction of some of Russia's major sports halls and stadiums.



MACHINE PROFILE

MSF Pro series

- Working area 4,000 x 2,000 mm
- Cutting of pipes Ø 30 – 300 mm and hollow sections up to a length of 4,000 mm
- Laser bevel head for weld preparation up to 45° with auto-calibration feature (ACTG®) + 6 kW fiber laser source
- Drilling up to Ø 16 mm and tapping up to M16
- Scanner for Additional Beveling Process (ABP)
- Automatic plate edge detection
- Automatic shuttle table



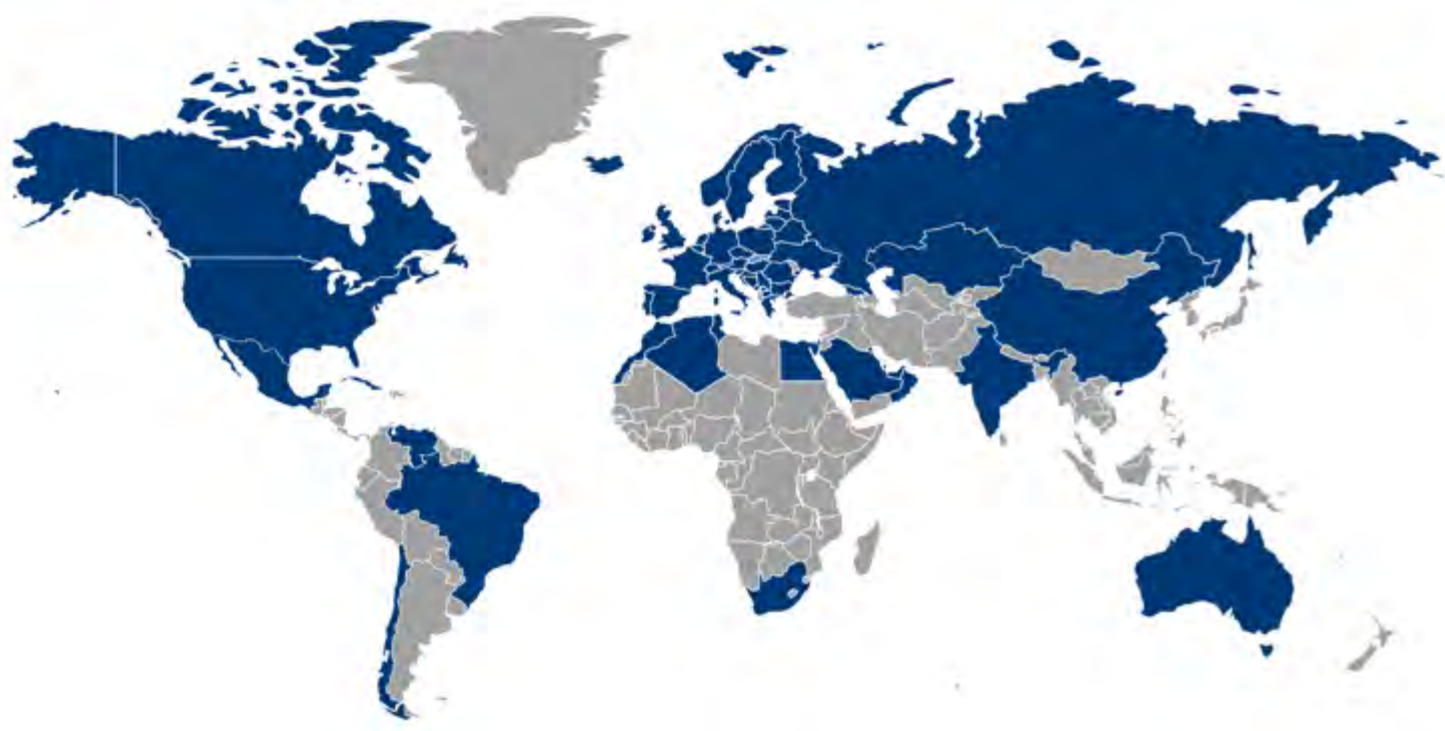
MACHINE PROFILE

CombiCut series

- Working area 25,000 x 4,500 mm
- Plasma rotator for weld preparation up to 50° with auto-calibration feature (ACTG®)
- Micro-percussion marking

The 1995 founded Eastern Slovakian company Kolonial Košice a.s. provides engineering and manufacturing services to customers from the steel construction and machine production sectors. Within their main production site in Nižný Medzev, the company's 50 employees operate laser cutting, punching, bending, shot-blasting, welding and painting facilities.

Danstoker is a leading producer of biomass boiler technology. Over 80 years they have accumulated an in-depth knowledge of shell and tube boilers, water tube boilers and exhaust gas boilers in general. Development and production of high-performance oil and gas boilers for the energy sector has made Danstoker one of Europe's leading manufacturers of a broad range of shell and tube boilers with capacities ranging from 800 to 50,000 kW.



MicroStep | 30+ years of Cutting and Automation

The company MicroStep was established in 1991 by members of the Department of Automation and Regulation, Faculty of Electrical Engineering and Information Technology, Slovak University of Technology in Bratislava, Slovakia with the aim to develop and deliver microprocessor-based control technology to various branches of industry. Over the years, the company has become one of the leading suppliers of cutting equipment that supplied more than 3,000 cutting machines worldwide in cooperation with strong channel partners spread over 58 countries.

MicroStep is offering the full range of contemporary cutting technologies – plasma, laser, oxyfuel and waterjet – along with a great variety of supplemental equipment and software for drilling, milling, tapping, countersinking, marking as well as process synchronization, automated material handling and robotic solutions. As a producer of not only machines themselves but also of control systems and CAM software the company delivers solutions that fit custom demands and are future-proof with respect to machine extensions in size and additional technologies. MicroStep's machines can process different types of materials including plates, pipes, profiles, beams, domes and elbows while implementing advanced automation processes. All of MicroStep's machines are controlled by a multi-tasking PC-based control system developed and produced in-house at MicroStep. The focus of the company are hi-tech machines that accommodate industry's latest trends – delivery of fully automatic workplaces, which integrate different cutting/drilling/marking technologies in combination with automatic loading and unloading systems, following demands for higher level of machinery automation and interconnection of control systems, CAM software and ERP systems.

MicroStep's rapid growth in its 30+ years' history resulted in founding of several domestic and international subsidiaries, most notable of which are MicroStep Europa GmbH in Germany, MicroStep USA and MicroStep China. MicroStep delivers its products through a professional network of authorized representatives that cover sales and service activities in 58 countries all around the world.



Headquarters of MicroStep in Bratislava, Slovakia

Industry	Customer	Country	Machine series	Page	
Agricultural Equipment & Machinery	OFAS S.p.A	I	MSF-P	26	
	Sunward Intelligent Equipment Group	CHN	MG	35	
	Wacker Neuson Kragujevac d.o.o.	SRB	MG	52	
Construction Equipment & Machinery	Zoomlion Heavy Industry Science and Technology Co., Ltd.	CHN	MG	46	
	ZAO Konecranes	UA	MG	53	
Domes Production & Processing	Bödenpresswerk Daaden GmbH	D	CombiCut, DRM, MG	44	
	Slawinski & Co. GmbH	D	DRM	40	
Electric Appliances	Gree Electric Appliances Inc.	CHN	PipeCut	61	
Energetics & Power Plants	Finow Rohrsysteme GmbH	D	CPCut	34	
Food Packaging Machinery	Sealpac GmbH	D	MSF Pro	12	
Mining Equipment & Machinery	Solintal Lrd, S.A.	E	CombiCut, MasterCut	16	
	Zhengzhou Coal Mining Machinery (Group) Co., Ltd.	CHN	CombiCut, MG	41	
Oil & Gas	Euro Gas Systems S.R.L.	RO	DRM	30	
	NOV Kostroma LLC	RUS	MG	66	
Pressure Vessels & Boilers	ATC Aulagner	F	DRM	62	
	Bosch Termotechnika s.r.o.	CZ	MSF Pipe-T	38	
	Danstoker A/S	DEN	CombiCut	69	
	Engicon nv (Geldof)	B	MG	56	
	GEA Brewery Systems GmbH	D	MG	43	
	Mettalica Caldeiraria Pesada LTDA	BR	MSF Pro	49	
	Robert Bosch GmbH	D, RUS	CombiCut, MG	5	
	STRUYF n.v.	B	DRM	13	
Sanitary & Household Products	SC Mondial SA / Villeroy & Boch Group	RO	AquaCut + Robot	51	
Shipyards & Offshore	Australian Naval Infrastructure	AUS	DRM-PL, MG, MSLoop	33	
	Chantiers de l'Atlantique	F	CombiCut, DRM-PL, MSF Max	10	
	Damen Shipyards Group	NL, CHN, PL, RO	MG, MicroMill	50	
	Fr. Lürssen Werft GmbH & Co. KG	D	MG, PLS, OxyCut	28	
	German Naval Yards Kiel GmbH	D	DRM-PL, EasyCut, MG	55	
	GOTECH Sp. z o.o.	PL	DRM, EasyCut	48	
	Irving Shipbuilding Inc.	CDN	DRM-PL	57	
	Jan De Nul NV	B	MG + Robot	58	
	Meyer Turku Oy	FIN	CombiCut, DRM, DRM-PL	4	
	Neptune Shipyards BV	NL	MG	19	
	Royal IHC	NL	CombiCut, MG	7	
	VARD Group AS	NOR, RO	CombiCut, DRM-PL	17	
Steel Processing & Job Cutting	Acciai di Qualità S.p.A.	I	MG, MSF Max, MSF Pro	42	
	AWAC spol. s r.o.	CZ	AquaCut, WaterCut	37	
	Bono Steel CC	ZA	CombiCut	14	
	Caccin Lavorazione Metalli Srl	I	MG, MSF Pro	65	
	GK Steel	SA	EasyCut, MG, MSF Pro, PLS	63	
	Klöckner & Co Deutschland GmbH	D	CombiCut, MG, PLS, OxyCut	29	
	Maschinen- und Metallbau Joachim Striegel e. K.	D	AquaCut, PLS	64	
	MTL Trasformazione Lamiere Srl	I	CombiCut, MSF Pro + MSLoad	47	
	Officine Piccoli S.p.a.	I	MSF Pro	20	
	Oy Flinkenberg Ab	FIN	MG	23	
	Prinzing Brennschneidtechnik GmbH & Co. KG	D	CombiCut	36	
	stürmsfs AG	CH, SK	CombiCut, MG	8	
	Steel Production	Altos Hornos de México S.A.B. de C.V.	MEX	Robot	24
		BlueScope Steel Limited	AUS	MG, MSF Max-C	32
Industeel France / ArcelorMittal Group		F	CombiCut	60	
Outokumpu PSC Finland Oy		FI	MG	25	
Steel & Structural Steel Construction	Caldererías Indálicas, S.L.	E	CombiCut	59	
	Give Steel A/S	DEN	CombiCut, MasterCut, PipeCut, PLS	11	
	JÖST GmbH + Co. KG	D	CombiCut	21	
	Kolonial Košice a.s.	SK	MSF Pro	68	
	KTS GmbH & Co. KG	D	CombiCut, MSF Pro	31	
	Namaqua Engineering	SA	MSF, ProfileCut	6	
	Zamil Steel Buildings India Pvt. Ltd.	IND	CombiCut	15	
ZAO Kurganstalmost	RUS	DRM	67		
Traffic Management	Swarco Dambach GmbH	D	MSF Pro, MSLoad	27	
Vehicles & Transport Systems	Automobili Lamborghini S.p.A.	I	MicroCut	45	
	BRÜGGEN Oberflächen- und Systemlieferant GmbH	D	MG	9	
	Doppelmayr Seilbahnen GmbH	A	DRM, MG	3	
	Feldbinder Spezialfahrzeugwerke GmbH	D	DRM, MasterCut, MG, PLS	39	
	Matisa Matériel Industriel S.A.	CH	MG	22	
	Guangzhou Hongxun Elevator Machinery Co., Ltd.	CHN	ProfileCut	18	
	Tikhvin Freight Car Building Plant	RUS	CombiCut, MasterCut, PLS	54	



Your Partner for
Cutting and Automation



Complex & Multi-functional

There is hardly any other CNC system with such a variety of technologies provided by a single machine and for such a variety of materials: sheets, pipes, profiles as well as domes. MicroStep is offering such versatile and efficient solutions by nature.

See the cut sample above – bevel cutting of contours and openings, drilling, tapping, countersinking, punch marking and contour marking, all delivered in a fully automatic mode by our multi-functional plasma cutting machine MG.



Contact the MicroStep
representative in your area!

For more information visit:
www.microstep.eu/dealers



Product Catalog

Information on all MicroStep cutting systems
can be found in our current **product catalog**.