

# FANUCI

Always chasing for perfection

# FANUCI

Always chasing for perfection

**FANUCI USA**

2541 Technology Dr. 404, Elgin, IL 60124

+1 224 293 2111

[www.fanuci.com](http://www.fanuci.com)

# CONTENT

Always chasing for perfection

- 01 About us
- FANUCI Cobot TurnKey 4.0 02
- 03 Laser welding machine
- Laser cleaning machine 04
- 05 CleanAir
- FANUCI 4D welding machine 06



## About FANUCI

### Customer first, Service first, Creativity first, Technology first

FANUCI is an innovative high-tech company focusing on laser welding and cleaning solutions. As a Joint Venture company between Europe (75%) and USA (25%), with advanced USA R&D team, European technology, China professional manufacturing and standardized process management, the company has been through years of experience in the industry. FANUCI products sell to more than 30 countries worldwide and have established local 4S centers, service stations and distributors in more than 20 countries. All components of our machines come from world-class suppliers, and all products are CE certified, TUV inspected and have over 20 patents. FANUCI professional and independent core R&D team, including software engineers, mechanical engineers, electrical engineers, industrial designers and other professional teams. FANUCI has mastered the core technologies of CNC system, precision welding head and precision field mirror system to achieve higher precision and faster processing speed of products. In welding, making the application of laser welding more extensive.



International certification

## Select FANUCI

We are constantly looking for innovative solutions to enable our company to establish and develop a reliable and trustworthy supplier image, making every stage of cooperation safe and reliable. We focus on optimized technical solutions to meet customers' personalized production needs. We make every effort to ensure that the quality of the equipment and services provided can continuously improve production efficiency.

we have our own qualified services all over the world. We provide continuous technical support during and after the warranty period. We have our own fully equipped dealer network and warehouse, which contains all necessary technicians and equipment accessories, which allows us to optimize the service process to the fastest and most convenient.

### Mission

Quality service, leading technology and top products  
Achieve excellent industry brands and provide valuable

### Vision

Based on the global market and integrates the world's cutting-edge technology concepts





## Fanuci Cobot TurnKey 4.0

### We tailor-made automation turnkey solutions for you

Integrated laser welding machine, robot system, motion control system and protective device, automatic loading and unloading robot, chucks, rotary and rolling welding table, etc., to meet almost all automatic production needs, efficient, safe, fast and low cost.

The welding laser system up to 8kw can meet the welding requirements of various thicknesses, materials, and shapes.

FANUCI welding unit, automatic control system, visual operating system, etc. can realize easier operation.

FANUCI provides a variety of comprehensive solutions such as fiber lasers, composite lasers, double wobble welding head, and composite welding head, which can be an economic solution and a high-end top-quality solution.

### Moving Welding Table Turnkey 4.0



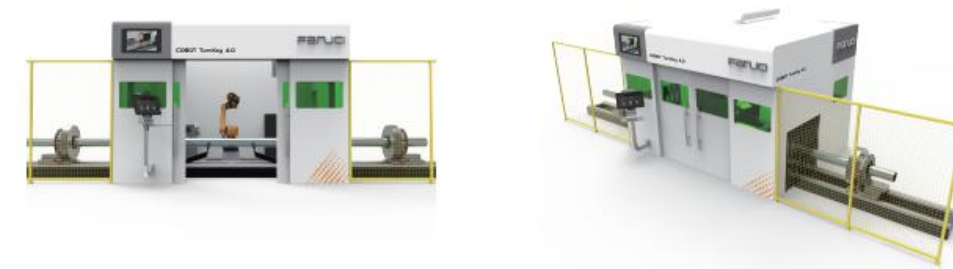
### Rotating Welding Table Turnkey 4.0



### Rolling Welding Table Turnkey 4.0



### Tube Welding Table Turnkey 4.0



### Moving Robot TurnKey 4.0



And more – your idea, we make it real!

### Technical Specification

<b>Robot Info.</b>	
Type	Laser Welding Robot
Brand	FANUC
Movement	6 axes
Effective Radius	1441 / customize
Max. Moving speed	720°/S
Re-positioning accuracy	+/- 0.02
<b>Size of the cabinet</b>	
	LWH: 4000*3000*2750mm / customize
<b>Moving Table</b>	
Size	LWH: 1500*1000*600mm / customize
Loading weight	500kg / customize
<b>Rotating Table</b>	
Size	600*600mm / customize
Loading weight	0-100kg / customize
<b>Laser Power</b>	
	1000W – 8000W



The Pro 4 in 1

Download FANUCI App



- Set device parameters without going back to the machine
- Wifi global interconnection Enjoy real-time service support
- Constantly updated parameter presets
- Check user manual and FAQs anytime



Control System Fanuci PRO LaserWELD 3.0 GenX System

The operation system combines high performance with intuitiveness and ease of use. The control is placed on a color touch screen that allows you to set all the necessary parameters depending on the user's needs.



FANUCI POWER PRO

- 976nm laser pump technology.
  - \*Same core laser pump tech and components as IPG.
  - \*Electro-optical conversion efficiency is as high as 48%. Saving 15% compare to 915nm.
  - \*Provide capability of welding/cutting high reflective materials
- Original control chip from US, avoid chip supply sanction.
- Intelligent Support: automatic access to the network, remote diagnosis, remote service.
  - \*Up to 85% laser problem could be solved remotely, significantly saving time.



FANUCI PRO Cooling System

FANUCI PRO Cooling system can provide high-efficiency cooling effect for the laser source and welding head, reduce the working temperature with maximum efficiency, and thus better protect the overall operation of the equipment. PRO cooling system is higher in power, more intuitive compressor pressure, easier operation and maintenance.



Technical Parameters

Component name	1000W	1500W	2000W	3000W
Fiber Length	10 m/15m	10 m/15m	10 m/15m	10 m/15m
Operation Model	continuous/modulated	continuous/modulated	continuous/modulated	continuous/modulated
Voltage	220V	220V	220V/380V	380V
Power Consumption	5KW	7KW	9KW	11KW
Frequency	50/60 HZ	50/60 HZ	50/60 HZ	50/60 HZ
Currency	25A	40A	25A/40A	40A
Laser Head Operation Mode	Oscillation / Spot / Line	Oscillation / Spot / Line	Oscillation / Spot / Line	Oscillation / Spot / Line
Welding Speed	0-160mm/s	0-190mm/s	0-215mm/s	0-245mm/s



Fanuci PRO Wobble 3.0 GenX laser head 4 in 1

- Handheld Laser Processing Head-Cut/Weld
- Multiple safety protection with auto beam off function once the nozzle goes away from workpiece.
- Various tip assemblies in standard kit to fulfill cutting, welding .
- Wide welding seam, low porosity and excellent melting pool protection.

Fanuci PRO EasyWire 3.0 GenX automatic wire feeder

The offered device is equipped with a fully automatic Fanuci PRO EasyWire wire feeder integrated with the software. The system allows you to work with 0.8-1.6mm filling in "push" or "pull" mode.



Fanuci Double Wire System

- Has all the advantages and stability of the Fanuci Easy Wire System
- Single motor drives double wire feeding to ensure wire feeding synchronization
- Faster speed and large amount of wire filling
- Able to achieve large gap welding
- Weld width up to 10mm



Technical Parameters

Metal welding, locomotive manufacturing, machinery industry, household appliance manufacturing, hardware tool processing, decorative advertising and other machinery manufacturing and complex irregular welding process. Perfect replacement of traditional argon arc welding, electric welding in thin stainless steel plate, iron plate, aluminum plate and other metal materials welding.



New energy

Automobile industry

Advertising decoration

Aerospace engineering

Achitecture





## The Pro Double Wobble

### Download FANUCI App



Set device parameters without going back to the machine  
 Wifi global interconnection Enjoy real-time service support  
 Constantly updated parameter presets  
 Check user manual and FAQs anytime



### FANUCI POWER PRO

- 976nm laser pump technology.
  - \*Same core laser pump tech and components as IPG.
  - \*Electro-optical conversion efficiency is as high as 48%. Saving 15% compare to 915nm.
  - \*Provide capability of welding/cutting high reflective materials
- Original control chip from US, avoid chip supply sanction.
- Intelligent Support: automatic access to the network, remote diagnosis, remote service.
  - \*Up to 85% laser problem could be solved remotely, significantly saving time.



### Fanuci Pro DOUBLE Wobble 4.0 Laser head

1. Have all the advantages and features of FANUCI single wobble
2. Adopt a more stable dual motor system
3. The double wobble system can realize various pattern welding, such as 8 type, triangle, circle, etc.

### Fanuci PRO EasyWire 4.0 GenX automatic wire feeder

The offered device is equipped with a fully automatic Fanuci PRO EasyWire wire feeder integrated with the software. The system allows you to work with 0.8-1.6mm filling in "push" or "pull" mode.



### Fanuci Double Wire System

1. Has all the advantages and stability of the Fanuci Easy Wire System
2. Single motor drives double wire feeding to ensure wire feeding synchronization
3. Faster speed and large amount of wire filling
4. Able to achieve large gap welding
5. Weld width up to 10mm



### Control System Fanuci PRO LaserWELD 4.0 GenX System

The operation system combines high performance with intuitiveness and ease of use. The control is placed on a color touch screen that allows you to set all the necessary parameters depending on the user's needs.



### FANUCI PRO Cooling System

FANUCI PRO Cooling system can provide high-efficiency cooling effect for the laser source and welding head, reduce the working temperature with maximum efficiency, and thus better protect the overall operation of the equipment.  
 PRO cooling system is higher in power, more intuitive compressor pressure, easier operation and maintenance.

### Technical Parameters

Laser Power	1000W	1500W	2000W	3000W
Fiber Length	10 m/15m	10 m/15m	10 m/15m	10 m/15m
Operation Model	continuous/modulated	continuous/modulated	continuous/modulated	continuous/modulated
Voltage	220V	220V	220V/380V	380V
Power Consumption	5KW	7KW	9KW	11KW
Frequency	50/60 HZ	50/60 HZ	50/60 HZ	50/60 HZ
Currency	25A	40A	25A/40A	40A
Laser Head Operation Mode	Oscillation / Spot / Line	Oscillation / Spot / Line	Oscillation / Spot / Line	Oscillation / Spot / Line
Welding Speed	0-160mm/s	0-190mm/s	0-215mm/s	0-245mm/s

### Application Industry

Metal welding, locomotive manufacturing, machinery industry, household appliance manufacturing, hardware tool processing, decorative advertising and other machinery manufacturing and complex irregular welding process. Perfect replacement of traditional argon arc welding, electric welding in thin stainless steel plate, iron plate, aluminum plate and other metal materials welding.



New energy

Automobile industry

Advertising decoration

Aerospace engineering

Architecture





## The Ultron

### Go beyond the confines of the workbench

The compact design of the whole machine is only 1/2 of that of Regular laser welding equipment.  
 The body is compact, freeing up more space, reducing equipment costs and occupying plant space.  
 The optical fiber line and control line can do 10(standard)/15/20 meters, and the welding head can move freely within the range of the control line.

### FANUCI POWER LITE

- 976nm laser pump technology.
  - \*Same core laser pump tech and components as IPG.
  - \*Electro-optical conversion efficiency is as high as 48%. Saving 15% compare to 915nm.
  - \*Provide capability of welding/cutting high reflective materials
- Original control chip from US, avoid chip supply sanction.
- Intelligent Support: automatic access to the network, remote diagnosis, remote service.
  - \*Up to 85% laser problem could be solved remotely, significantly saving time.



### Fanuci PRO Wobble 3.0 GenX laser head 4 in 1

- 1.4-in-One Handheld Laser Processing Head-Cut/Weld/Weld seam Clean/Remote Clean
2. Multiple safety protection with auto beam off function once the nozzle goes away from workpiece.
3. Various tip assemblies in standard kit to fulfill cutting, welding and weld seam cleaning. Assembly of remote cleaning is optional.
4. Wide welding seam, low porosity and excellent melting pool protection.

### Fanuci EasyWire 3.0 GenX automatic wire feeder

The offered device is equipped with a fully automatic Fanuci EasyWire wire feeder integrated with the software. The system allows you to work with 0.8-1.6mm filling in "push" or "pull" mode.



### Fanuci Double Wire System

1. Has all the advantages and stability of the Fanuci Easy Wire System
2. Single motor drives double wire feeding to ensure wire feeding synchronization
3. Faster speed and large amount of wire filling
4. Able to achieve large gap welding
5. Weld width up to 10mm

## Control System Fanuci PRO LaserWELD 3.0 GenX 4 in 1 System

The operation system combines high performance with intuitiveness and ease of use. The control is placed on a color touch screen that allows you to set all the necessary parameters depending on the user's needs.



### Technical Parameters

Mode	1000W	1500W	2000W
Fiber Length	10 m/15m	10 m/15m	10 m/15m
Operation Model	continuous/modulated	continuous/modulated	continuous/modulated
Voltage	220V	220V	220V(MAX)/380V(Raycus)
Power Consumption	5KW	7KW	9KW
Frequency	50/60 HZ	50/60 HZ	50/60 HZ
Current	25A	40A	25A/40A
Laser Head Operation Mode	Oscillation / Spot / Line	Oscillation / Spot / Line	Oscillation / Spot / Line
Welding Speed	0-160mm/s	0-190mm/s	0-215mm/s

### Application Industry

Laser welding application industry: Metal welding, locomotive manufacturing, machinery industry, household appliance manufacturing, hardware tool processing, decorative advertising and other machinery manufacturing and complex irregular welding process. Perfect replacement of traditional argon arc welding, electric welding in thin stainless steel plate, iron plate, aluminum plate and other metal materials welding.



New energy

Automobile industry

Advertising decoration

Aerospace engineering

Architecture



## The Portable

FANUCI Pro GenX Portable is an ultra-compact portable laser welding machine launched by FANUCI.

### Portable Laser welding Machine

1. Small size, light weight, flexible movement, the whole machine is only 1/8 of the Pro model, and the weight is only 62KG
2. Power 1500w
3. Frequency conversion heat dissipation, better protect laser source
4. 32 groups of preset process parameters, 7-inch touch screen
5. The working radius is 15m



### Technical Parameters

Mode	1500W
Fiber Length	10 m/15m
Operation Model	continuous/modulated
Voltage	220V
Power Consumption	7KW
Frequency	50/60 HZ
Currency	32A
Laser Head Operation Mode	Oscillation / Spot / Line
Welding Speed	0-190mm/s



### Fanuci Pro DOUBLE Wobble 4.0 Laser head

1. Have all the advantages and features of FANUCI single wobble
2. Adopt a more stable dual motor system
3. The double wobble system can realize various pattern welding, such as 8 type, triangle, circle, etc.

### Fanuci PRO Wobble 3.0 GenX laser head 4 in 1

- 1.4-in-One Handheld Laser Processing Head-Cut/Weld/Weld seam Clean/Remote Clean
2. Multiple safety protection with auto beam off function once the nozzle goes away from workpiece.
3. Various tip assemblies in standard kit to fulfill cutting, welding and weld seam cleaning. Assembly of remote cleaning is optional.
4. Wide welding seam, low porosity and excellent melting pool protection.



### Fanuci EasyWire 4.0 GenX automatic wire feeder

The offered device is equipped with a fully automatic Fanuci EasyWire wire feeder integrated with the software. The system allows you to work with 0.8-1.6mm filling in "push" or "pull" mode.

### Application Industry

Laser welding application industry: Metal welding, locomotive manufacturing, machinery industry, household appliance manufacturing, hardware tool processing, decorative advertising and other machinery manufacturing and complex irregular welding process. Perfect replacement of traditional argon arc welding, electric welding in thin stainless steel plate, iron plate, aluminum plate and other metal materials welding.



New energy

Automobile industry

Advertising decoration

Aerospace engineering

Achitecture



Fanuci Futura

FANUCI POWER PRO

- 976nm laser pump technology.
  - \*Same core laser pump tech and components as IPG.
  - \*Electro-optical conversion efficiency is as high as 48%. Saving 15% compare to 915nm.
  - \*Provide capability of welding/cutting high reflective materials
- Original control chip from US, avoid chip supply sanction.
- Intelligent Support: automatic access to the network, remote diagnosis, remote service.
  - \*Up to 85% laser problem could be solved remotely, significantly saving time.



Mopa Laser Head CW Laser Head

Fanuci PRO Wobble 3.0 GenX laser head

1. Handheld Laser Processing Head
2. Multiple safety protection with foot switch to avoid laser injury.
3. Various tip assemblies in standard kit to fulfill cleaning .
4. Wide cleaning area seam, fast and efficient clean the surface with low cost

Control System Fanuci PRO LaserWELD 3.0 GenX System

The operation system combines high performance with intuitiveness and ease of use. The control is placed on a color touch screen that allows you to set all the necessary parameters depending on the user's needs



FANUCI PRO Cooling System

FANUCI PRO Cooling system can provide high-efficiency cooling effect for the laser source and welding head, reduce the working temperature with maximum efficiency, and thus better protect the overall operation of the equipment. PRO cooling system is higher in power, more intuitive compressor pressure, easier operation and maintenance.

Technical Parameters

Item	Fanuci-1000W	Fanuci-1500W	Fanuci-2000W
Laser Power	1000W	1500W	2000W
Laser Wavelength	1070 NM	1070 NM	1070 NM
Fiber Length	10 m	10 m	10 m
Operation Model	continuous/modulated	continuous/modulated	continuous/modulated
Voltage	220V	220V	380V
Power Consumption	5KW	7KW	9KW
Frequency	50/60 HZ	50/60 HZ	50/60 HZ
Currency	25A	40A	25A
Laser Head Operation Mode	Oscillation / Spot / Line	Oscillation / Spot / Line	Oscillation / Spot / Line
Focus Length	150mm	150mm	150mm

Application Industry

Metal welding, locomotive manufacturing, machinery industry, household appliance manufacturing, hardware tool processing, decorative advertising and other machinery manufacturing and complex irregular welding process. Perfect replacement of traditional argon arc welding, electric welding in thin stainless steel plate, iron plate, aluminum plate and other metal materials welding.



Aerospace engineering



Marine ship



Train Tracks



precision instrument



industrial mold



Automobile industry



Clean Air

Product display



**FANUCI CleanAir mobile dust collector**

This product is a high negative pressure dust collector different from the traditional dust collection method, is widely used in laser welding, cleaning and other scenes. This product is equipped with a brushless motor with ultra-high speed, the air volume is not large, it can burst out an ultra-high negative pressure of 34Kpa, air inlet can easily absorb the splashing smoke and dust. Moreover, the equipment also innovatively adds an adjustable vibration dust removal system, which greatly improves the service life and filtration efficiency of the filter element without manual cleaning.



**FANUCI CleanAir Smoke Purifier**

-Used in conjunction with dust removal workbench

Has a small footprint and the best appearance and performance. There is a big gap between Fanuci CleanAir dust collector and traditional dust collector. From the industrial design of appearance and the combination of integrated structure, the equipment covers a small area and is extremely convenient for shoveling and installation. The CleanAir dust collector is a dust collector specially designed for dust generated by thermal cutting and welding. The equipment is changing the blue sky of the traditional thermal processing dust removal industry. The equipment is widely used in metal welding, laser cutting, plasma cutting and dust removal in the metal shot blasting industry.



**FANUCI CleanAir Dust Removal Workbench**

-Used with Smoke Purifier

Has a small footprint and the best appearance and performance. Fanuci CleanAir dust removal workbench uses wear-resistant, high-temperature table materials, and combined with multi-angle dust collection design, it can effectively collect the dust generated by welding. Each smoke purifier can supply three dust removal worktables at the same time.

\*\*Workbench is scalable. You can customize the width of the worktable.

Standards and Safety

International safety standards



EMC Test Standard	EMC Immunity Standard	Electrical safety standards	Laser safety standard
EN 55011:2009+A1:2010	IEC 6132601:2012	EN 61010-1:2010	EN 68025-1:2014
CISPR 11:2015	EN 61326-1:2013		CDRH 21 CFR 1040.10

Why FANUCI is the best Choice



**spark/cyclone return separator:**

High-temperature dust with Mars or large particles enters the cyclone reflux separator for the first pre-separation, and at the same time effectively prevents dangerous particles from entering the filter cartridge cavity. After the 50% dust particles are separated by a separator, the service life of the dust collector filter is effectively improved.



**double-layer/silencer sealed door:**

Equipment cavity maintenance door adopts a double-layer structure to effectively reduce the noise generated during equipment operation and dust removal, and the sealing performance of the equipment is improved through embedded custom sealing strips, so that there is no dust overflow during dust removal.



**pulse/intelligent Blowing:**

Equipment adopts high-precision pulse injection solenoid valve for ash removal. When the pressure difference of the equipment reaches the set range value, the pulse valve is activated by the computer motherboard program to release compressed air to spray atmospheric pressure into the inner cavity of the filter cartridge, thus shooting down the dust adsorbed on the surface of the filter cartridge to the ash collecting box. The service life of pulse solenoid valve is as high as 1 million times in pollution-free environment.



**intelligent control system:**

Control system adopts self-developed PLC control program setting, the operation panel has clear instructions and complete functions, making the operation of the equipment simple and easy to understand and convenient. The main electrical components are imported brands to ensure the stability of the equipment.





## FANUCI 4D welding machine



### FANUCI Precision Welding

Powerful functions, simple operation, compatible with various formats of graphics files, and can process any pattern.  
 Program-controlled instantaneous multi-point welding can effectively improve production efficiency and flexibility.  
 According to different welding materials, the output energy waveform can be set and waveform control can be performed to achieve a more ideal welding effect.

## FANUCI Robot Laser Cladding

FANUCI combines laser cladding technology with robots to achieve flexible and multi-angle laser cladding, which is widely used in various industries.

1. The cladding strength between the laser cladding layer and the substrate is not lower than 90% of the original substrate.
2. The heat effect of laser cladding is only one tenth of that of argon arc welding.
3. The substrate is not deformed.
4. The angle is flexible and can be processed sectionally.
5. Less energy consumption, no waste gas and liquid.



### FANUCI Robot Laser Cutting

FANUCI can combine robots with laser cutting to perform irregular and diverse cutting operations.

1. Professional laser cutting head
2. The omnidirectional movement of the robot arm can achieve cutting angles that cannot be achieved by conventional cutting machines.
3. By extending the design of the robot, such as adding a track, etc., it can meet the demand for a larger cutting area
4. FANUCI provides stable, high-quality laser output

## FANUCI Robot Laser Welding

1. High quality· High precision·High speed welding robot  
 Through rich functions and core components, it can meet the needs of users for fast, complex and precision welding.
2. It can implement non-contact welding for inaccessible precision parts, and is suitable for butt welding overlap welding, etc. of various complex products.
3. Remote control to ensure the safety.



## FANUCI POWER PRO



- 976nm laser pump technology.
  - \*Same core laser pump tech and components as IPG.
  - \*Electro-optical conversion efficiency is as high as 48%. Saving 15% compare to 915nm.
  - \*Provide capability of welding/cutting high reflective materials
- Original control chip from US, avoid chip supply sanction.
- Intelligent Support: automatic access to the network, remote diagnosis, remote service.
  - \*Up to 85% laser problem could be solved remotely, significantly saving time.

## FANUCI PRO Cooling System

FANUCI PRO Cooling system can provide high-efficiency cooling effect for the laser source and welding head, reduce the working temperature with maximum efficiency, and thus better protect the overall operation of the equipment.  
 PRO cooling system is higher in power, more intuitive compressor pressure, easier operation and maintenance.



### Safety Grating System and Alarm Lights

Safety grating can better protect users and bystanders, FANUCI PRO equipment can automatically stop when entering the working range without permission, and it can be connected to safety doors and other facilities according to customer needs.  
 The warning lights of FANUCI PRO devices can provide a visual indication of green (operation), yellow (start) and red (alarm).

## Dual Use System

Equipped with 4D welding, cladding, and cutting systems (choose one of three), FANUCI provides customers with additional optional hand-held welding 4 in 1 solutions. The equipment can be equipped with a second laser, providing a hand-held welding and cleaning system with a working radius of 10 meters

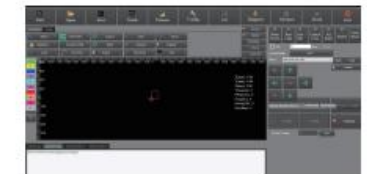


### Full Cover Design with Smoke exhausting System

Unique appearance design, fully enclosed protection design. Laser protective glass is used on three sides, which is convenient to observe the working status and provide users with maximum protection. Top fume extraction design, can be used with CleanAir fume purification system or conventional blower.

## FANUCI and Swiss Raytools Joint developed control System

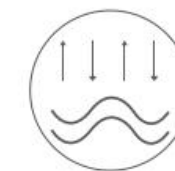
The four-dimensional control software jointly developed with Swiss Raytools, adapted to ECAT bus drive, FANUCI's uniquely designed platform, matched with FANUCI PRO lasers and Cooling System and other supporting systems, can realize conventional welding/cutting/cladding of different workpiece sizes and materials, tilting, large-format field Mirror welding/cutting and cladding. Equipped with rotary chuck, trajectory simulation, visualization system, etc.



### Customer first, Service first, Creativity first, Technology first

Linear and circular trajectories of weldable metalworking parts

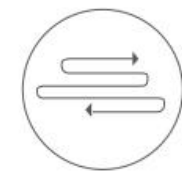
- Strategic partner YASKAWA servo control system
- High-precision guide rail, the accuracy can reach 0.02mm
- Visual welding— monitor welding status at any time
- Independent water cooling system
- Various welding trajectories
- Cylindrical spherical rectangle complex shape



Straight track welding



Circumferential track welding



Complex track welding





FANUCI USA



North America Warehouse

FANUCI Laser Corp. maintains 20-50 in-stock/quasi-stock laser welding machines to provide North America distributors with faster supply. Every in-stock equipment has undergone rigorous FAT testing at the factory to ensure delivery speed without relaxing our consistent standards for quality.

North America Part Center

FANUCI Laser Corp. holds a rich spare parts reserve, which is sufficient to support the after-sales service of existing equipment in the entire North America and Latin America market, and can meet the growing business needs. Including the overall replacement, laser source, water cooling, welding system and laser head, electrical components, accessories, wearing parts and other accessories to ensure the operation of the equipment.

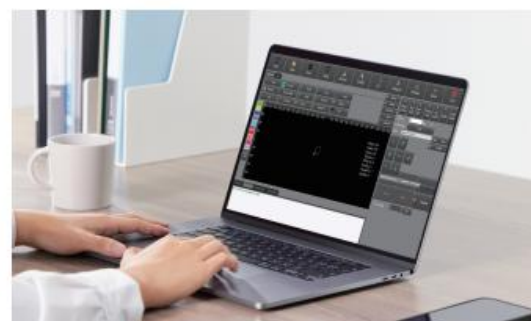
North America After Sales Center

FANUCI Laser Corp. has a team of well-trained after-sales engineers based in Chicago, which can provide same-day door-to-door service throughout North America.

FANUCI Laser Corp. is the Engineering and Support company of FANUCI in North America, located in the city of Chicago with convenient transportation and pleasant climate. FANUCI new Automatic welding system, COBOT welding system are developed here by our talent engineers. It is also becoming FANUCI R&D center from 2023.

Global R&D Center

FANUCI Laser Corp. is responsible for all series of FANUCI product including FANUCI 4.0 welding system, 4D welding platform, COBOT welding system design, development, a improvement. Our engineers in Chicago with excellent experience and talent are making FANUCI a perfect manufacturer.



North America Sales Support Center

FANUCI Laser Corp.'s active and enthusiastic sales team based in Chicago can achieve time-lag pre-sales support for our distributors and clients.

North America Laser Repair Center (under construction)

FANUCI Laser Corp. hopes to solve customers' laser problems in locally. By setting up a laser repair center, lasers of various brands can be repaired. The repair time of the laser can be shortened from one month to 3-7 days in USA. Minimize customer downtime and ensure efficient equipment operation.

US Center Showroom

In addition to warehousing and service, FANUCI Laser Corp. can receive dealer customers from various countries, and provide customers with equipment display, actual operation, sample testing and other needs. We have prepared first-class coffee and desserts, welcome every friend who is interested in FANUCI





FANUCI EUROPE is a subsidiary company of FANUCI in Europe, located in the port of Gdansk with convenient transportation and pleasant climate, FANUCI is committed to continuously improving and improving customer experience in various aspects such as service capabilities, communication efficiency, and delivery speed.

### European Warehouse

FANUCI EUROPE maintains 50-100 in-stock/quasi-stock laser welding machines to provide European distributors with faster supply. Every in-stock equipment has undergone rigorous FAT testing at the factory to ensure delivery speed without relaxing our consistent standards for quality.

### European Part Center

FANUCI EUROPE holds a rich spare parts reserve, which is sufficient to support the after-sales service of more than 2,000 existing equipment in the entire European market, and can meet the growing business needs. Including the overall replacement, laser source, water cooling, welding system and laser head, electrical components, accessories, wearing parts and other accessories to ensure the operation of the equipment.

### European After Sales Center

FANUCI EUROPE has a team of well-trained after-sales engineers based in Gdansk, which can provide same-day door-to-door service throughout Europe.

### European Sales Support Center

FANUCI EUROPE's active and enthusiastic sales team based in Gdansk can achieve time-lag pre-sales support for our distributors.

### European Laser Repair Center (under construction)

FANUCI EUROPE hopes to solve customers' laser problems in Europe. By setting up a laser repair center, lasers of various brands can be repaired. The repair time of the laser can be shortened from one month to 3-7 days in Europe. Minimize customer downtime and ensure efficient equipment operation.

### European Center Showroom

In addition to warehousing and service, FANUCI EUROPE can receive dealer customers from various countries, and provide customers with equipment display, actual operation, sample testing and other needs. We have prepared first-class coffee and desserts, welcome every friend who is interested in FANUCI

ANYONE CAN WELD

**IN FIVE!**

More about FANUCI

