

Pump specifications:

Type.....	BA160L D420
Max. flow	620 m ³ /hour (10 m ³ /min)
Max. head.....	29 mwc (95 ft.)
Connections.....	8 inch IT quick couplings
Solids handling	80 x 65 mm (3.15 x 2.5")
Priming system	BBA MP50
Pump speed (max)	1000 rpm
PTO drive	50 kW (67 hp)
Cardan shaft	1-3/8" 6 spline
Galvanized frame	With 2 jack stands
Hitch.....	Category II and III
Lighting	3 integrated LED lights
Dry weight.....	1140 kg (2513 lbs.)

FEATURES

BA auto prime pump

The BA range of pumps has been designed with a clear focus on reliability, efficiency and durability. Featuring a 100% mechanical priming system, the BA series pumps quickly prime and re-prime, even from dry conditions. The heavy build style of both pump and canopy make the BA range perfect for use in the strenuous contractor market.

World-class performance

The BA range is built to be deployed on the most demanding dewatering and sewage bypassing applications. Using high efficiency pumps and state-of-the-art diesel engines, the pumps offer maximum performance at minimal cost, fully in-sync with the company philosophy of "Lowest cost of ownership".

Hose racks optionally available

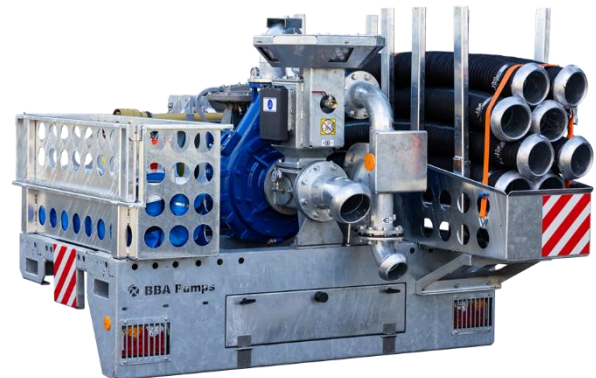
- Rack for flat discharge hoses
- Lockable storage bin for accessories
- Rack with bars for 2 metre suction hoses

Complete package designed & built by BBA Pumps

- Complete in-house design & production
- Over 70 years of experience in the market
- Complete testing facility in-house
- Contemporary & functional design
- Durable & eco-friendly materials
- Custom builds available

After sales service & product support

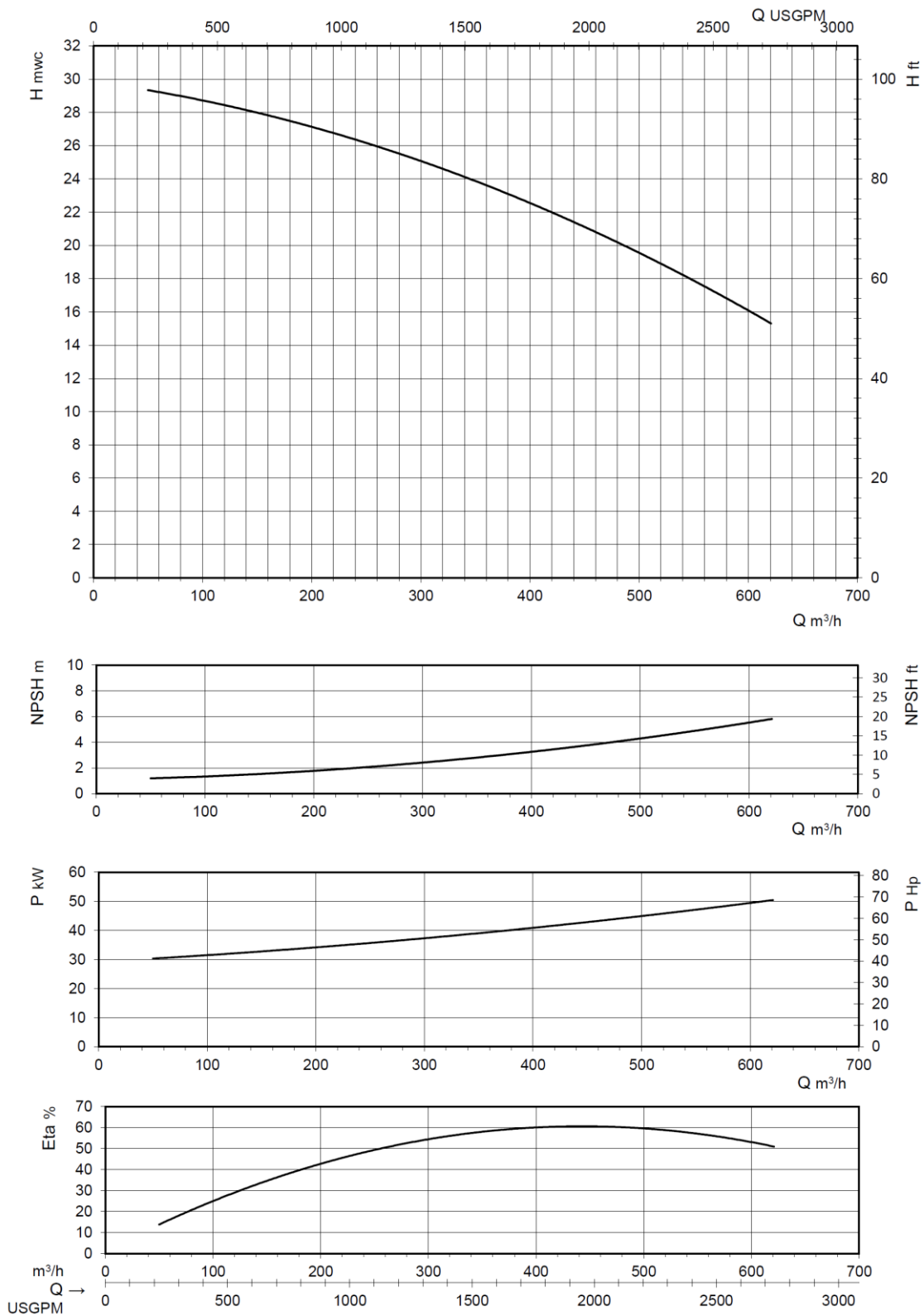
- Single supplier for parts, spares & accessories
- Dedicated customer help-desk (24h service)
- Dedicated service department in-house
- Global parts distribution network
- Optional global on-site servicing available
- Extensive training options available (technical & commercial), on-site or in-house



Hose racks optionally available

PERFORMANCE CURVES (1000 RPM)

Continuous duty according ISO 9906



STANDARD TECHNICAL SPECIFICATIONS

BBA auto prime pump

Pump type.....	BA160L D420
Max. flow.....	620 m ³ /hour (2730 US gpm)
Max. head.....	29 mwc (95 feet)
Impeller type.....	Enclosed impeller
Solids handling.....	80 x 65 mm (3.15 x 2.5 inch)
Pump casing.....	Ductile iron GGG50
Impeller.....	Stainless steel 316
Wear plate.....	Stainless steel 316
Pump shaft.....	42CrMo4 heat treated
Shaft seal.....	Mechanical seal Tung/Sic/Viton



BBA priming system

Pump type.....	BBA MP50 diaphragm pump
Air handling capacity.....	50 m ³ /h (30 CFM)
Max. vacuum.....	8,5 m (29 inHg)
Drive.....	Toothed belt
Float box.....	St. 37
Float.....	Stainless steel 304
Non return valve.....	Cast iron GG25

BBA tractor frame

Assembly.....	Fully galvanized frame
Dimensions (L x W x H).....	2010 x 1122 x 1587 mm
Jacks.....	2 jack stands
Lighting.....	Lighting bar
Forklift pockets.....	Fitted with 2 forklift pockets
Lighting.....	3 integrated LED lights

