

CUMMINS MARINE PRODUCTS GUIDE

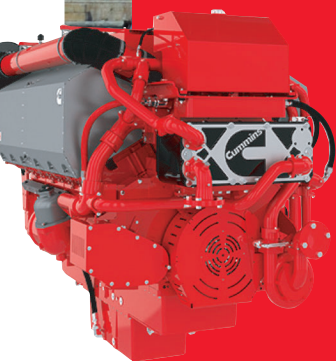
Thoughtful design and next-level technology that is good for mariners and the environment.

2023



**FOR
A WORLD
THAT'S
ALWAYS ON™**

TAKING PROVEN TECHNOLOGY TO A NEW TIER.



Our dual-tier strategy for addressing IMO III takes proven engine technology and adds an advanced aftertreatment which allows SCR to be “paused” when operating in less regulated waters. The system doesn’t require use of low-sulfur fuel and has the most competitive DEF usage in its class. Maximum flexibility, performance and convenience. Minimum fluid usage, maintenance and cost.



Learn how Cummins IMO III solutions are in their own tier at cummins.tech/imoi.iii.



CONTENTS

We are Cummins	3	
Global Support	4	
Local Experts	5	
Global Manufacturing	6	
Experience	7	
The Right Technology	8	
Complementary Products	9	

Marine Products		
Propulsion Engines	10	
Diesel Electric Engines	39	
Auxiliary Engines	42	
ReCon Engines	68	
Generator Sets	81	
Alternators	105	
Premium Options	109	
Warranty	125	
Genuine Cummins Parts	127	

Reference Material		
Fuel Consumption	128	
Emissions	130	
Classification Society Certification	132	

EXPERIENCE THAT SPANS THE GLOBE.

GHANA PORTS & HARBOUR AUTHORITY



Ghana's dramatic increase in cargo traffic has prompted the addition of three new ship-docking tugs. Each one is 32.8 by 12.9 meters with a depth of 5.37 meters and a pair of Cummins QSK95 engines power a pair of Rolls Royce US2555 P30 FP azimuth thrusters. This combination gives the tugs an 80-ton or greater bollard pull and speeds up to 13 knots.

A dedicated fire pump engine provides the required power to meet Fi-Fi 1 standards with Cummins QSK38-M 1595 BHP (1190 kW) variable speed at 1800 RPM while also providing a protective water spray.

Electrical requirements of each tug are met with a pair of Cummins QSB7DM-powered generators producing 170 Kva 136 kWe at 1500 RPM 50 Hz.

POLISH MULTIPURPOSE VESSELS



Poland's impressive history in maritime research continues to grow with the delivery of two new multipurpose vessels. In addition to servicing Polish navigational aids and ice breaking, these diesel-electric powered craft are equipped for towing ships in emergencies. A major focus of their work is in conduction hydrographic research on water quality and depth contours.

The vessels are fitted out alongside with three 1359 kW generators each powered by an IMO Tier III compliant Cummins QSK50 diesel that will turn at 1800 RPM. The green technology has been well proven on off-shore support vessels where, depending on demand, the ships can operate on one, two, or three generators.

CUMMINS. A LEGACY OF INNOVATION AND DEPENDABILITY.

Founded in 1919 by self-taught mechanic and inventor Clessie Cummins and Columbus, Indiana banker W.G. Irwin, Cummins Inc. has a long history powering marine applications. Today, we provide products and services across a range of commercial, government and recreational marine applications globally.

SUSTAINABILITY

Cummins takes a broad view of sustainability including such things as safety, diversity, leadership and governance along with environmental practices, community involvement and financial performance.

INNOVATION

From our very first marine diesel engine in 1919 to launching our first IMO Tier III certified marine diesel engine, Cummins empowers its employees to apply the creative ingenuity necessary to make us better, faster, first. We are confident this spirit of creativity will help our clients achieve success in the ever-evolving maritime industry.

MARINE EXPERTISE

Cummins employs an experienced team of technical and market experts focused on the marine industry and its customers. Factory trained Marine Application Engineers will help you select the right spec for your vessel and Qualified Marine Technicians keep you up and running once in service.

GLOBAL SUPPORT

Present in over 190 countries and territories, Cummins has the most extensive service network in the world with over 9,000 service and distributor locations. Plus, our regional response teams ensure service and application expertise is available when and where it's needed, even in the most remote operating locations.

COMPLETE MARINE SOLUTIONS

Cummins offers a complete line of propulsion, generator set and auxiliary power solutions designed specifically for the challenges of marine applications. Because we understand customer needs and operating conditions vary, we also offer custom generator set packaging through our distribution channel.

GLOBAL SUPPORT

Cummins Inc.

Marine Headquarters

4400 Leeds Avenue – Suite 300
North Charleston, SC 29405 U.S.A.
Tel: +1-800-Cummins

www.cummins.com/sales-and-service/request-a-quote

AFRICA

2 Cecil Morgan Street
Stikland 7530
Cape Town
South Africa
Tel: + 27 21 945 1888

ame.abo.communication@cummins.com

CHINA MAINLAND/HONGKONG/ TAIWAN/MACAU

9/10F, Building T2
No. 398 Huoshan Road
Yangpu District
Shanghai 200082 P.R.
China
Tel: (86) 21 20805570 or (86) 21 2080 5578

Gao.Yi@cummins.com

EUROPE

Cummins Ltd
Royal Oak Way South
Daventry NN11 8NU
United Kingdom
Tel: 00 8000 2866467
(U.K., Ireland, Germany,
France, Netherlands)
Tel: +44 1327 886464
(all other countries)

cceurope@cummins.com

INDIA

Cummins India Office Campus
2nd Floor, Survey no. 21
Balewadi, Pune 411 045
Maharashtra, INDIA

powermaster@kcl.cummins.com

MIDDLE EAST

Jebel Ali Free Zone South
Plot S20506, Dubai
United Arab Emirates
Tel: + 971 4 806 0800

cummins.middleeast@cummins.com

KOREA

25th floor, 517 (Samsung-dong),
Yeongdong-daero,
Gangnam-gu Seoul,
South Korea 06164
Tel: 82 2 3452 4313
Fax: 82 2 3452 4113

SOUTH PACIFIC

2 Caribbean Drive, Scoresby
Victoria 3179, Australia
Tel: 1 800 351 004

sthpac.enquiries@cummins.com

SOUTHEAST ASIA

85 Tuas South Ave 1, Singapore 637419
Tel: +65-6265-0155
Fax: +65-6261-2405

BRAZIL

Distribuidora Cummins Brasil - DCB
Rua Estrela Do Oeste, 124 – Bloco B9
Guarulhos, SP – Brasil
07140-030
Tel: 0800 286 6467

falecom@cummins.com

ARGENTINA

Distribuidora Cummins S.A.
Ruta Panamericana KM 32.5 - CP1618
El Talar _ Buenos Aires
Tel: 0800 122 6467

contacto@cummins.com

***For more information,
please contact your local
Cummins distributor.***

***To find your closest distributor,
visit cummins.com/locations***

LOCAL EXPERTS

Cummins sells its engines, generator sets and associated components through a global network of 500 distributor locations and over 7,600 dealer locations. Our local presence guarantees a face-to-face relationship wherever our products are operating, ensuring fast access to reliable service, engineering expertise and parts support.

Cummins provides fully integrated support at all stages of a new build or repower project, from vessel concept to installation, commissioning and sea trial. We work closely with partner suppliers, including gear manufacturers and system integrators to ensure proper engine selection, application and installation.

Our Marine Application Engineers (MAE) support projects during design and construction to ensure appropriate products are installed, while our Local Qualified Marine Technicians (QMT) support the equipment and customer once the vessel is in-service.

Both MAEs and QMTs undergo rigorous factory training and certification, including regular training in the latest advances in engines, diagnostics and repair. Distributors make a heavy investment in state-of-the-art repair tools, electronic hardware and software. In addition to on-site support, Cummins distributors operate workshops for more complex repairs and rebuilds, as well as custom builds and upfit.

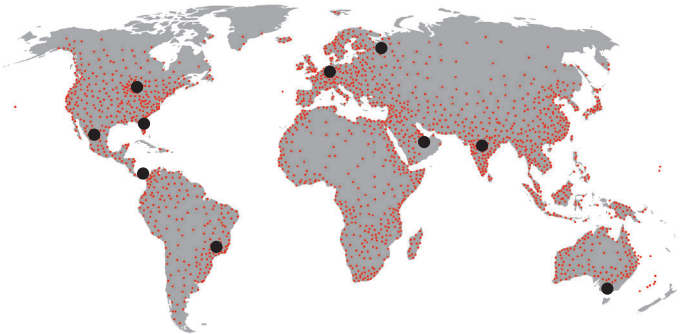
Many Cummins distributors employ in-house engineering experts to design custom solutions featuring our marine auxiliary engines, base rails, electronics and customer's choice of alternator, including our own STAMFORD® and AvK® brands. These distributors also offer design and validation testing to ensure custom power packages meet performance, emissions and class society requirements.



GLOBAL MANUFACTURING

Cummins has an impressive global manufacturing presence that produces the right technology products for global and regional markets. We are the only engine manufacturer with a fully global network of production facilities, technical centers and service coverage — a unique capability which puts us ahead of the competition.

- » Global build capability to meet local application and emission requirements
- » Six Sigma led process improvement common across all worldwide facilities
- » All products externally certified to ISO 9001–2000, the international standard for the highest quality design, manufacturing and supply



60,000 EMPLOYEES **9,000** LOCATIONS **190+** COUNTRIES

EXPERIENCE

Cummins offers a complete line of propulsion, generating set and auxiliary power solutions designed specifically for the challenges of commercial, government and recreational marine applications.

We have significant experience working with vessel owners, operators and fleets in a number of market segments including:



Commercial Transport



Government / Defense



Offshore and Wind



Passenger Transport



Recreational



Fishing

THE RIGHT TECHNOLOGY

Cummins offers a range of engines with both mechanical and electronic fuel systems compliant to global emission requirements. This allows us to meet a variety of customer needs while distinguishing ourselves from other engine manufacturers who are offering only electronic emissionized products.

MECHANICAL PRODUCT LINE

Cummins customers have communicated significant interest in mechanical products for IMO Tier II based on preference, the crew's comfort level in servicing the product and operator requirements—some operators simply do not need or require the features available on an electronic product. In addition, the mechanical product has lower initial costs and is a great option for fleets already powered by Cummins mechanical products who are seeking to standardize their fleet.

- » B, K, N and V products with mechanical fuel systems
- » Simple, proven design
- » Easy to service
- » Lower cost of ownership
- » Basic functionality and monitoring
- » Marine Classification Society approved

ELECTRONIC PRODUCT LINE

Electronic engines offer numerous benefits including higher power while meeting more stringent emissions and providing a more sociable operating environment. Cummins engines allow engine fueling to be precisely measured and optimized, which can significantly reduce smoke when operating in transient conditions. Since fuel injection can be specifically controlled at varying loads and engine speed, fuel consumption can be optimized – not only at full power, but also at partial load conditions. Perhaps the most beneficial feature of an electronic engine is the ability to capture and interpret engine parameters specific to the vessel's operating pattern.

- » Electronic fuel systems
- » Advanced functionality, options and features
- » World class durability
- » Proven electronics
- » Enhanced engine protection
- » Marine Classification Society approved

COMPLEMENTARY PRODUCTS

Cummins Inc., a global power leader, is a corporation of complementary business units that design, manufacture, distribute and service engines and related technologies, including fuel systems, controls, air handling, filtration, emission solutions and electrical power generation systems.



Aftertreatment



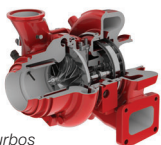
Filtration



Alternators



Power Generation



Turbos

Cummins Emissions Solutions is dedicated to innovation and dependability in meeting global emissions regulations, developing and producing various emission technologies for all engine makes. Current solutions, along with future technologies under development, are designed to meet emission standards across all industries around the globe. See cummins.com/components/aftertreatment

Cummins Filtration is the industry leader in filtration, exhaust, coolant and chemical technologies for diesel and gas markets, offering dependability and reliability beyond OEM specifications and customer requirements. See page 124.

Cummins Generator Technologies offers premium quality alternators from two to 10,000 kVA. Our family of brands — MARKON®, STAMFORD® and AvK® — is known for their robust build, reliable performance and versatile configurations. See page 105.

Cummins Power Systems provides dependable solutions for all your power needs. Our comprehensive line of products can be found in recreational vehicle, marine, commercial mobile, residential standby and portable applications. To learn more visit cummins.com/cummins-generators-power-systems

Cummins Turbo Technologies is the world's largest manufacturer of turbochargers for the medium-heavy duty diesel engine market and has a reputation for bringing innovative and dependable solutions to this key market sector. See cummins.com/components/turbo-technologies/turbo-componentry



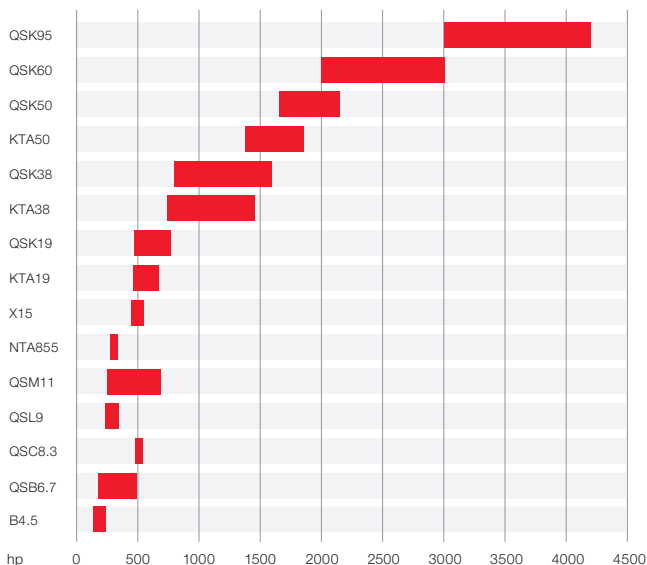
CUMMINS MARINE PROPULSION

Cummins offers a complete line of variable speed propulsion solutions designed specifically for the challenges of commercial, government and recreational marine applications.



*Hinckley Picnic : Home to two
Cummins QSB6.7 480hp engines
with a top speed of 38 knots.*

POWER RANGE FOR CUMMINS MARINE PROPULSION ENGINES



RATING DEFINITIONS

Continuous Duty (CON): Intended for continuous use in applications requiring a load factor of 70-90 percent.

Heavy Duty (HD): Intended for continuous use in variable load applications with a load factor of 60-75 percent. Full power is limited to 10 hours out of every 12 hours of operation. Reduced power operations must be at or below 80 percent.

Medium Continuous (MCD): Intended for continuous use in variable load applications with a load factor of 40-60 percent. Full power is limited to six hours out of every 12 hours of operation. Reduced power operations must be at or below 80 percent.

Intermittent (INT): Intended for intermittent use in variable load applications with a load factor of 20-40 percent. Full power is limited to one hour out of every eight hours of operation. Reduced power operations must be at or below 80 percent.

Light Duty (LD): Intended for intermediate use in variable load applications with a load factor of 10-30 percent. Full power is limited to one hour out of every eight hours of operation. Reduced power operations must be at or below 80 percent.

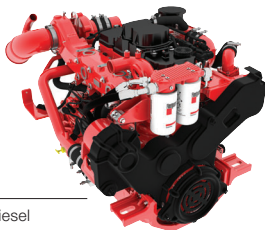
High Output (HO): Intended for infrequent use in variable load applications with a load factor of 10-30 percent. Full power is limited to one hour out of every eight hours of operation. Reduced power operations must be at or below 80 percent.

Engines with HO rating are restricted to recreational applications. It is not to be used in any revenue-generating commercial application. Use of HO ratings in commercial applications will at Cummins' discretion void the warranty.

Contact your local Cummins application expert for assistance matching a power rating to your specific installation. The definitions outlined here are intended to be a guide for selecting appropriate ratings for a given application based on duty cycle and load factor.

B4.5

MAIN PROPULSION



GENERAL SPECIFICATIONS

Configuration	In-line, 4 cylinder, 4-stroke diesel	
Aspiration	Turbocharged / Aftercooled	
Displacement	4.5 L	272 in ³
Bore & Stroke	107 x 124 mm	4.21 x 4.88 in
Fuel System	High Pressure Common Rail (HPCR)	

COMMERCIAL RATINGS

			FUEL CONSUMPTION		EMISSIONS		
kW	BHP	RPM	Rated L/hr (Gal/hr)	ISO Avg L/hr (Gal/hr)	IMO	EPA	EU
Heavy Duty							
112	150	2500	32.4 (8.6)	21.9 (5.8)	—	3	5
Intermittent							
172	230	2600	47.0 (12.4)	32.8 (8.7)	2	3	—
Light Duty							
186	250	2600	51.4 (13.6)	32.0 (8.5)	2	3	—

RECREATIONAL RATINGS

			FUEL CONSUMPTION		EMISSIONS		
kW	BHP	RPM	Rated L/hr (Gal/hr)	ISO Avg L/hr (Gal/hr)	IMO	EPA	RCD
High Output							
172	230	2600	47.0 (12.4)	16.4 (4.3)	2	3	2
186	250	2600	51.4 (13.6)	17.8 (4.7)	2	3	2

PRODUCT DIMENSIONS

Length	mm (in)	1112	(43)
Width	mm (in)	862	(34)
Height	mm (in)	877	(35)
Weight	kg (lb)	545	(1202)

Dimensions may vary based on selected engine configuration.

QSB6.7

MAIN PROPULSION



GENERAL SPECIFICATIONS

Configuration	In-line, 6 cylinder, 4-stroke diesel	
Aspiration	Turbocharged / Aftercooled	
Displacement	6.7 L	408 in ³
Bore & Stroke	107 x 124 mm	4.21 x 4.88 in
Fuel System	High Pressure Common Rail (HPCR)	

COMMERCIAL RATINGS

kW	MHP	RPM	FUEL CONSUMPTION		EMISSIONS		
			Rated L/hr (Gal/hr)	ISO Avg L/hr (Gal/hr)	IMO	EPA	EU
Heavy Duty							
184*	250	2600	46.9 (12.4)	33.0 (8.7)	2	3	—
184**	250	2600	49.7 (13.1)	34.1 (9.0)	2	3	—
Medium Continuous							
224*	305	2600	55.7 (14.7)	39.2 (10.4)	2	3	—
224**	305	2600	58.7 (15.5)	40.4 (10.7)	2	3	—
Intermittent							
169*	230	3000	47.3 (12.5)	32.2 (8.5)	2	3	—
261*	355	2800	68.1 (18.0)	47.7 (12.6)	2	3	—
261**	355	3000	71.9 (19.0)	48.6 (12.8)	2	3	—
280*	380	3000	73.9 (19.5)	50.4 (13.3)	2	3	—
280**	380	3000	75.7 (20.0)	51.7 (13.7)	2	3	—
312*	425	3000	82.2 (21.7)	55.0 (14.5)	2	3	—
312**	425	3000	84.3 (22.3)	56.9 (15.0)	2	3	—
353*	480	3000	91.8 (24.3)	61.7 (16.3)	2	3	—

For more information on average fuel consumption and emissions, refer to the Reference Materials section.

* Heat exchanged (HX) configuration

** Keel cooled (KC) configuration

QSB6.7

MAIN PROPULSION (continued)

COMMERCIAL RATINGS CONTINUED

kW	MHP	RPM	FUEL CONSUMPTION		EMISSIONS		
			Rated L/hr (Gal/hr)	ISO Avg L/hr (Gal/hr)	IMO	EPA	EU
Light Duty							
353	480	3300	96.2 (25.4)	64.1 (16.9)	2	3	—
404	550	3300	110.2 (29.1)	72.7 (19.2)	2	3	—

For more information on average fuel consumption and emissions, refer to the Reference Materials section.

RECREATIONAL RATINGS

kW	MHP	RPM	FUEL CONSUMPTION		EMISSIONS		
			Rated L/hr (Gal/hr)	ISO Avg L/hr (Gal/hr)	IMO	EPA	RCD
High Output							
184	250	2600	46.9 (12.4)	16.8 (4.4)	2	3	2
224	305	2600	55.7 (14.7)	20.0 (5.3)	2	3	2
261	355	3000	67.6 (17.9)	23.8 (6.3)	2	3	2
280	380	3000	73.9 (19.5)	25.5 (6.7)	2	3	2
312	425	3000	81.1 (21.4)	27.8 (7.3)	2	3	2
353	480	3300	96.2 (25.4)	32.3 (8.5)	2	3	2
404	550	3300	110.3 (29.1)	36.4 (9.6)	2	3	2

For more information on average fuel consumption and emissions, refer to the Reference Materials section.

PRODUCT DIMENSIONS

Length	mm (in)	1074	(42)
Width	mm (in)	991	(36)
Height	mm (in)	857	(34)
Weight	kg (lb)	634	(1398)

Dimensions may vary based on selected engine configuration.

QSB6.7 SL SLIM LINE

MAIN PROPULSION

GENERAL SPECIFICATIONS

Configuration	In-line, 6 cylinder, 4-stroke diesel	
Aspiration	Turbocharged / Aftercooled	
Displacement	6.7 L	408 in ³
Bore & Stroke	107 x 124 mm	4.21 x 4.88 in
Fuel System	High Pressure Common Rail (HPCR)	

COMMERCIAL RATINGS

			FUEL CONSUMPTION		EMISSIONS		
kW	MHP	RPM	Rated L/hr (Gal/hr)	ISO Avg L/hr (Gal/hr)	IMO	EPA	EU
Heavy Duty							
209	280	2300	TBA	TBA	2	3	—
Intermittent							
261	355	3000	73.5 (19.4)	49.1 (13.0)	2	3	—
279	380	3000	78.4 (20.7)	52.4 (13.8)	2	3	—
312	425	3000	85.9 (22.7)	57.5 (15.2)	2	3	—

For more information on average fuel consumption and emissions, refer to the Reference Materials section.

RECREATIONAL RATINGS

			FUEL CONSUMPTION		EMISSIONS		
kW	MHP	RPM	Rated L/hr (Gal/hr)	ISO Avg L/hr (Gal/hr)	IMO	EPA	RCD
High Output							
261	355	3000	73.4 (19.4)	25.0 (6.6)	2	3	2
280	380	3000	78.3 (20.7)	26.5 (7.0)	2	3	2
312	425	3000	85.9 (22.7)	28.9 (7.6)	2	3	2

For more information on average fuel consumption and emissions, refer to the Reference Materials section.

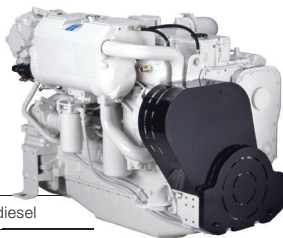
PRODUCT DIMENSIONS

Length	mm (in)	748	(30)
Width	mm (in)	827	(33)
Height	mm (in)	874	(34)
Weight	kg (lb)	630	(1390)

Dimensions may vary based on selected engine configuration.

QSC8.3

MAIN PROPULSION



GENERAL SPECIFICATIONS

Configuration	In-line, 6 cylinder, 4-stroke diesel	
Aspiration	Turbocharged / Aftercooled	
Displacement	8.3 L	505 in ³
Bore & Stroke	114 x 135 mm	4.49 x 5.31 in
Fuel System	High Pressure Common Rail (HPCR)	

COMMERCIAL RATINGS

kW	MHP	RPM	FUEL CONSUMPTION		EMISSIONS		
			Rated L/hr (Gal/hr)	ISO Avg L/hr (Gal/hr)	IMO	EPA	EU
Intermittent							
368*	500	2600	96.2 (25.4)	66.0 (17.4)	2	3	—
368**	500	2600	101.8 (26.9)	68.6 (18.1)	2	3	—
395*	537	2800	108.6 (28.7)	72.3 (19.1)	2	3	—
Light Duty							
441*	600	2800	122.7 (32.4)	80.9 (21.4)	2	3	—
442*	600	3000	123.1 (32.5)	75.5 (20.0)	2	3	—

For more information on average fuel consumption and emissions, refer to the Reference Materials section.

* Heat exchanged (HX) configuration

** Keel cooled (KC) configuration

RECREATIONAL RATINGS

kW	MHP	RPM	FUEL CONSUMPTION		EMISSIONS		
			Rated L/hr (Gal/hr)	ISO Avg L/hr (Gal/hr)	IMO	EPA	RCD
High Output							
368*	500	2600	96.2 (25.4)	33.6 (8.9)	2	3	2
405*	550	3000	113.0 (29.9)	38.3 (10.1)	2	3	2
442*	600	3000	123.1 (32.5)	42.0 (11.1)	2	3	2

For more information on average fuel consumption and emissions, refer to the Reference Materials section.

* Heat exchanged (HX) configuration

See next page for product dimensions.

QSC8.3

MAIN PROPULSION (continued)

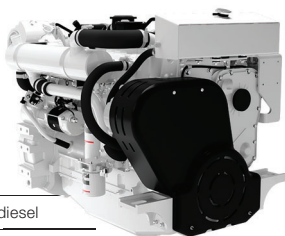
PRODUCT DIMENSIONS

Length	mm (in)	1174	(46)
Width	mm (in)	839	(33)
Height	mm (in)	982	(39)
Weight	kg (lb)	896	(1975)

Dimensions may vary based on selected engine configuration.

QSL9

MAIN PROPULSION



GENERAL SPECIFICATIONS

Configuration	In-line, 6 cylinder, 4-stroke diesel	
Aspiration	Turbocharged / Aftercooled	
Displacement	8.9 L	542 in ³
Bore & Stroke	114 x 145 mm	4.49 x 5.71 in
Fuel System	High Pressure Common Rail (HPCR)	

COMMERCIAL RATINGS

kW	MHP	RPM	FUEL CONSUMPTION		EMISSIONS		
			Rated L/hr (Gal/hr)	ISO Avg L/hr (Gal/hr)	IMO	EPA	EU
Continuous							
213*	290	1800	53.4 (14.1)	37.3 (9.9)	2	3	—
213**	290	1800	54.9 (14.5)	38.0 (10.0)	2	3	—
Heavy Duty							
246*	335	1800	63.1 (16.7)	43.6 (11.5)	2	3	—
246**	335	1800	66.1 (17.5)	44.4 (11.7)	2	3	—
Medium Continuous							
302*	410	2100	78.6 (20.8)	53.5 (14.1)	2	3	—
302**	410	2100	82.3 (21.8)	55.9 (14.8)	2	3	—
336*	455	2100	86.9 (23.0)	58.9 (15.5)	2	3	—

For more information on average fuel consumption and emissions, refer to the Reference Materials section.

* Heat exchanged (HX) configuration

** Keel cooled (KC) configuration

RECREATIONAL RATINGS

kW	MHP	RPM	FUEL CONSUMPTION		EMISSIONS		
			Rated L/hr (Gal/hr)	ISO Avg L/hr (Gal/hr)	IMO	EPA	RCD
High Output							
302	410	2100	78.7 (20.8)	53.5 (14.1)	2	3	2**

For more information on average fuel consumption and emissions, refer to the Reference Materials section.

**Only for Heat exchanged (HX) configuration. Keel cooled (KC) configuration is RCD 1.

See next page for product dimensions.

QSL9

MAIN PROPULSION (continued)

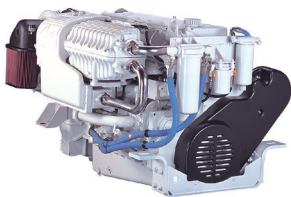
PRODUCT DIMENSIONS

Length	mm (in)	1174	(46)
Width	mm (in)	842	(33)
Height	mm (in)	1086	(43)
Weight	kg (lb)	907	(2000)

Dimensions may vary based on selected engine configuration.

QSM11

MAIN PROPULSION



GENERAL SPECIFICATIONS

Configuration	In-line, 6 cylinder, 4-stroke diesel	
Aspiration	Turbocharged / Aftercooled	
Displacement	10.8 L	661 in ³
Bore & Stroke	125 x 147 mm	4.92 x 5.79 in
Fuel System	Celect	

COMMERCIAL RATINGS

kW	MHP	RPM	FUEL CONSUMPTION		EMISSIONS		
			Rated L/hr (Gal/hr)	ISO Avg L/hr (Gal/hr)	IMO	EPA	EU
Continuous							
260*	355	1800	67.6 (17.9)	46.1 (12.2)	2	3	—
260**	355	1800	70.2 (18.5)	47.5 (12.5)	2	3	—
297	405	1800	80.4 (21.2)	54.2 (14.3)	2	3	—
Heavy Duty							
298*	405	2100	80.6 (21.3)	54.3 (14.4)	2	3	—
297**	405	2100	82.6 (21.8)	55.8 (14.7)	2	3	—
Medium Continuous							
334*	455	2100	92.5 (24.4)	60.9 (16.1)	2	3	—
334**	455	2100	93.4 (24.7)	62.2 (16.4)	2	3	—
Intermittent							
449*	610	2300	112.5 (29.7)	75.8 (20.0)	2	3	—
Light Duty							
493*	670	2300	128.1 (33.9)	83.9 (22.2)	2	3	—
526*	715	2500	139.2 (36.8)	92.6 (24.5)	2	3	—

For more information on average fuel consumption and emissions, refer to the Reference Materials section.

* Heat exchanged (HX) configuration

** Keel cooled (KC) configuration

See next page for recreational ratings and product dimensions.

QSM11

MAIN PROPULSION (continued)

RECREATIONAL RATINGS

kW	MHP	RPM	FUEL CONSUMPTION		EMISSIONS		
			Rated L/hr (Gal/hr)	ISO Avg L/hr (Gal/hr)	IMO	EPA	RCD
High Output							
220	300	1800	55.2 (14.6)	39.4 (10.4)	2	—	2
298	405	2100	75.2 (19.9)	52.5 (13.9)	2	—	2
336	455	2100	87.6 (23.1)	59.3 (15.7)	2	—	2
449	610	2300	112.5 (29.7)	75.8 (20.0)	2	3	2
493	670	2300	127.9 (33.8)	83.9 (22.2)	2	3	2
526	715	2500	139.2 (36.8)	92.1 (24.3)	2	3	2

For more information on average fuel consumption and emissions, refer to the Reference Materials section.

PRODUCT DIMENSIONS

Length	mm (in)	1349	(52)
Width	mm (in)	1104	(44)
Height	mm (in)	1012	(40)
Weight	kg (lb)	1188	(2620)

Dimensions may vary based on selected engine configuration.

NTA855

MAIN PROPULSION

GENERAL SPECIFICATIONS

Configuration	In-line, 6 cylinder, 4-stroke diesel	
Aspiration	Turbocharged / Aftercooled	
Displacement	14 L	855 in ³
Bore & Stroke	140 x 152 mm	5.50 x 6.00 in
Fuel System	Pressure Time (PT)	

COMMERCIAL RATINGS

kW	MHP	RPM	FUEL CONSUMPTION		EMISSIONS		
			Rated L/hr (Gal/hr)	ISO Avg L/hr (Gal/hr)	IMO	EPA	EU
Continuous							
242	330*	1800	61.0 (16.1)	45.0 (11.9)	2	—	—
298	405*	1800	79.0 (20.9)	55.3 (14.6)	2	—	—

* Rating is restricted, please contact your dealer for further information.

For more information on average fuel consumption and emissions, refer to the Reference Materials section. For additional standard options available regionally, contact your local Cummins distributor.

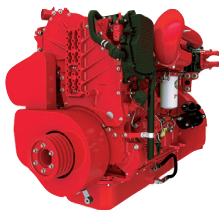
PRODUCT DIMENSIONS

Length	mm (in)	1298	(61)
Width	mm (in)	817	(32)
Height	mm (in)	1376	(53)
Weight	kg (lb)	1433	(3160)

Dimensions may vary based on selected engine configuration.

X15

MAIN PROPULSION



GENERAL SPECIFICATIONS

Configuration	In-line, 6 cylinder, 4-stroke diesel	
Aspiration	Turbocharged / Aftercooled	
Displacement	14.9 L	912 in ³
Bore & Stroke	137 x 169 mm	5.39 x 6.65 in
Rotation	Counterclockwise facing flywheel	
Fuel System	Cummins XPI	

COMMERCIAL RATINGS

kW	BHP	RPM	FUEL CONSUMPTION		EMISSIONS		
			Rated L/hr (Gal/hr)	ISO Avg L/hr (Gal/hr)	IMO	EPA	EU
Continuous							
336	450	1800	90.0 (24.0)	61.3 (16.2)	2	3	—
336	450	1800	82.0 (21.7)	57.6 (15.2)	2	—	—
373	500	1800	97.8 (25.8)	67.2 (17.8)	2	3	—
373	500	1800	90.7 (24.0)	62.9 (16.6)	2	—	—
429	575	1800	109.1 (28.8)	78.1 (20.6)	2	3	—
447	600	1800	108.9 (28.8)	75.1 (19.8)	2	—	—
Heavy Duty							
469	630	2100	123.8 (32.7)	84.3 (22.3)	2	3	—

For more information on average fuel consumption and emissions, refer to the Reference Materials section. For additional standard options available regionally, contact your local Cummins distributor.

PRODUCT DIMENSIONS

Length	mm (in)	1712	(67)
Width	mm (in)	1067	(42)
Height	mm (in)	1234	(49)
Weight	kg (lb)	1724	(3800)

Dimensions may vary based on selected engine configuration.

KTA19

MAIN PROPULSION

GENERAL SPECIFICATIONS

Configuration	In-line, 6 cylinder, 4-stroke diesel	
Aspiration	Turbocharged / Aftercooled	
Displacement	19 L	1150 in ³
Bore & Stroke	159 x 159 mm	6.25 x 6.25 in
Fuel System	Pressure Time (PT)	

COMMERCIAL RATINGS

kW	BHP	RPM	FUEL CONSUMPTION		EMISSIONS		
			Rated L/hr (Gal/hr)	ISO Avg L/hr (Gal/hr)	IMO	EPA	EU
Continuous							
373	500	1800	96.0 (25.4)	66.7 (17.6)	1	—	—
373	500	1800	93.4	60.4 (16.0)	2	—	—
395	530	1800	100.0 (26.4)	70.4 (18.6)	1	—	—
447	600	1800	108.2 (28.6)	N/A	1	—	—
447	600	1800	116.9 (30.9)	82.6 (21.8)	2	—	—
Heavy Duty							
477	640	1800	120.7 (31.9)	84.1 (22.2)	1	—	—
522	700	2100	136.5 (36.0)	91.96 (24.3)	1	—	—

For more information on average fuel consumption and emissions, refer to the Reference Materials section. For additional standard options available regionally, contact your local Cummins distributor.

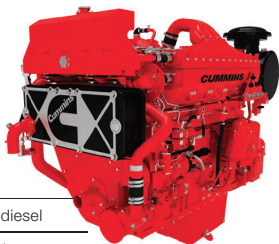
PRODUCT DIMENSIONS

Length	mm (in)	1907	(75)
Width	mm (in)	997	(39)
Height	mm (in)	1954	(77)
Weight	kg (lb)	2073	(4570)

Dimensions may vary based on selected engine configuration.

QSK19

MAIN PROPULSION



GENERAL SPECIFICATIONS

Configuration	In-line, 6 cylinder, 4-stroke diesel	
Aspiration	Turbocharged / Aftercooled	
Displacement	19 L	1150 in ³
Bore & Stroke	159 x 159 mm	6.25 x 6.25 in
Fuel System	Modular Common Rail System (MCRS)	

COMMERCIAL RATINGS

kW	BHP	RPM	FUEL CONSUMPTION		EMISSIONS		
			Rated L/hr (Gal/hr)	ISO Avg L/hr (Gal/hr)	IMO	EPA	EU
Continuous							
373	500	1800	95.3 (25.2)	68.8 (18.2)	2	—	—
373	500	1800	100.3 (26.5)	72.4 (19.1)	2	3	—
447	600	1800	114.8 (30.3)	77.7 (20.5)	2	—	—
447	600	1800	119.2 (31.5)	85.2 (22.5)	2	3	—
492	660	1800	126.3 (33.4)	94.9 (25.1)	2	—	—
492	660	1800	128.1 (33.8)	90.7 (24.0)	2	3	—
559	750	1800	147.5 (39.0)	104.5 (27.6)	2	3	—
Heavy Duty							
559	750	1800	140.9 (37.2)	99.2 (26.2)	2	—	—
567	760	2100	149.0 (39.4)	104.0 (27.5)	2	—	—
597	800	1800	156.2 (41.3)	109.9 (29.0)	2	3	—
597	800	2100	166.9 (44.1)	114.8 (30.3)	2	3	—
Medium Continuous							
597	800	2100	158.8 (41.9)	109.7 (29.0)	2	—	—

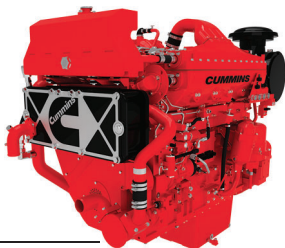
For more information on average fuel consumption and emissions, refer to the Reference Materials section.

PRODUCT DIMENSIONS

Length	mm (in)	2010	(79)
Width	mm (in)	1088	(43)
Height	mm (in)	1765	(69)
Weight	kg (lb)	2189	(4826)

Dimensions may vary based on selected engine configuration.

QSK19 IMO III MAIN PROPULSION



GENERAL SPECIFICATIONS

Configuration	In-line, 6 cylinder, 4-stroke diesel	
Aspiration	Turbocharged / Aftercooled	
Displacement	19 L	1150 in ³
Bore & Stroke	159 x 159 mm	6.25 x 6.25 in
Rotation	Counterclockwise facing flywheel	
Fuel System	Modular Common Rail System (MCRS)	

COMMERCIAL RATINGS

			FUEL CONSUMPTION		EMISSIONS
kW	BHP	RPM	Rated L/hr (Gal/hr)	ISO Avg L/hr (Gal/hr)	IMO
Continuous					
373	500	1800	100.1 (26.5)	72.4 (19.1)	3
447	600	1800	119.1 (31.5)	85.2 (22.5)	3
492	660	1800	128.1 (33.8)	90.7 (24.0)	3
559	750	1800	147.5 (39.0)	104.5 (27.6)	3
Heavy Duty					
567	760	2100	148.7 (39.3)	104.0 (27.5)	3
597	800	1800	156.2 (41.3)	109.9 (29.0)	3
Medium Continuous					
597	800	2100	166.9 (44.1)	114.8 (30.3)	3

For more information on average fuel consumption and emissions, refer to the Reference Materials section.

* To be announced

PRODUCT DIMENSIONS

Length	mm (in)	2010	(79)
Width	mm (in)	1088	(43)
Height	mm (in)	1765	(69)
Weight	kg (lb)	2189	(4825)
A/T Weight	kg (lb)	447	(986)

Dimensions may vary based on selected engine configuration.

K38/KTA38

MAIN PROPULSION

GENERAL SPECIFICATIONS

Configuration	V-12 cylinder, 4-stroke diesel	
Aspiration	Turbocharged / Aftercooled	
Displacement	38 L	2300 in ³
Bore & Stroke	159 x 159 mm	6.25 x 6.25 in
Fuel System	Pressure Time (PT)	

COMMERCIAL RATINGS

kW	BHP	RPM	FUEL CONSUMPTION		EMISSIONS		
			Rated L/hr (Gal/hr)	ISO Avg L/hr (Gal/hr)	IMO	EPA	EU
Continuous – K38							
634	850	1800	161.0 (42.5)	113.5 (30.0)	2	–	–
746	1000	1800	189.2 (48.6)	128.7 (34.1)	2	–	–
Continuous – KTA38							
559	750	1600	145.4 (38.4)	102.6 (27.1)	1	–	–
597	800	1800	155.6 (41.1)	106.4 (28.1)	1	–	–
634	850	1800	162.1 (42.8)	115.9 (30.6)	1	–	–
671	900	1600	169.6 (44.8)	120.0 (31.7)	1	–	–
746	1000	1800	185.1 (48.9)	132.3 (34.9)	1	–	–
783	1050	1600	201.5 (53.2)	138.0 (36.5)	1	–	–
895	1200	1800	224.4 (59.3)	153.1 (40.4)	1	–	–
895	1200	1800	230.1 (60.8)	162.0 (42.8)	2	–	–
Heavy Duty – KTA38							
820	1100	1800	200.3 (52.9)	144.8 (38.3)	1	–	–
969	1300	1800	239.2 (63.2)	153.1 (40.4)	1	–	–
1007	1350	1900	251.5 (66.4)	172.6 (45.6)	1	–	–
1007	1350	1900	260.3 (68.8)	181.4 (47.9)	2	–	–
1007	1350	1950	247.1 (65.3)	181.1 (47.8)	1	–	–

For more information on average fuel consumption and emissions, refer to the Reference Materials section.

See next page for continued KTA38 commercial ratings and product dimensions.

K38/KTA38

MAIN PROPULSION

(continued)

KTA38 COMMERCIAL RATINGS CONTINUED

kW	BHP	RPM	FUEL CONSUMPTION		EMISSIONS		
			Rated L/hr (Gal/hr)	ISO Avg L/hr (Gal/hr)	IMO	EPA	EU
Medium Continuous – KTA38							
1044	1400	1950	256.7 (67.8)	179.0 (47.3)	1	—	—
Intermittent – KTA 38							
1119	1500	2050	279.0 (73.7)	197.6 (52.2)	1	—	—

For more information on average fuel consumption and emissions, refer to the Reference Materials section.

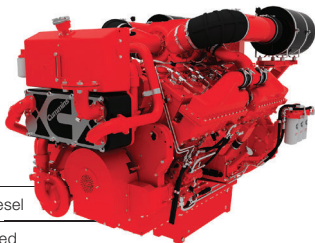
PRODUCT DIMENSIONS

Length	mm (in)	2155	(85)
Width	mm (in)	1466	(58)
Height	mm (in)	2056	(81)
Weight	kg (lb)	4218	(9300)

Dimensions may vary based on selected engine configuration.

QSK38

MAIN PROPULSION



GENERAL SPECIFICATIONS

Configuration	V-12 cylinder, 4-stroke diesel	
Aspiration	Turbocharged / Aftercooled	
Displacement	38 L	2300 in ³
Bore & Stroke	159 x 159 mm	6.25 x 6.25 in
Fuel System	Modular Common Rail System (MCRS)	

COMMERCIAL RATINGS

kW	BHP	RPM	FUEL CONSUMPTION		EMISSIONS		
			Rated L/hr (Gal/hr)	ISO Avg L/hr (Gal/hr)	IMO	EPA	EU
Continuous							
597	800	1600	160.7 (42.4)	113.0 (29.9)	2	3	—
746	1000	1800	191.6 (50.6)	143.9 (38.0)	2	3	—
746	1000	1800	185.6 (49.0)	136.6 (36.1)	2	—	—
969	1300	1600	247.4 (65.3)	183.6 (48.5)	2	3	—
969	1300	1600	235.8 (62.3)	169.9 (44.9)	2	—	—
969	1300	1800	247.6 (65.4)	182.8 (48.3)	2	3	—
969	1300	1800	248.4 (65.6)	170.8 (45.1)	2	—	—
Heavy Duty							
1044	1400	1600	251.3 (66.4)	181.3 (47.9)	2	—	—
1044	1400	1800	271.4 (71.7)	194.4 (51.4)	2	3	—
1044	1400	1800	261.2 (69.0)	182.3 (48.2)	2	—	—
1044	1400	1900	265.4 (70.1)	194.4 (51.4)	2	3	—
1044	1400	1900	257.5 (68.0)	183.5 (48.5)	2	—	—
Intermittent							
1193	1600	1800	301.4 (79.6)	212.2 (56.1)	2	—	—

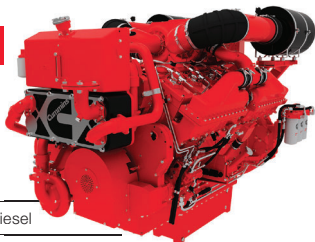
For more information on average fuel consumption and emissions, refer to the Reference Materials section.

PRODUCT DIMENSIONS

Length	mm (in)	2282	(90)
Width	mm (in)	1573	(62)
Height	mm (in)	2242	(88)
Weight	kg (lb)	4850	(10692)

Dimensions may vary based on selected engine configuration.

QSK38 IMO III MAIN PROPULSION



GENERAL SPECIFICATIONS

Configuration	V-12 cylinder, 4-stroke diesel	
Aspiration	Turbocharged / Aftercooled	
Displacement	38 L	2300 in ³
Bore & Stroke	159 x 159 mm	6.25 x 6.25 in
Rotation	Counterclockwise facing flywheel	
Fuel System	Modular Common Rail System (MCRS)	

COMMERCIAL RATINGS

			FUEL CONSUMPTION		EMISSIONS
kW	BHP	RPM	Rated L/hr (Gal/hr)	ISO Avg L/hr (Gal/hr)	IMO
Continuous					
746	1000	1800	186.5 (49.3)	136.3 (36.0)	3
969	1300	1800	249.9 (66.0)	171.8 (45.4)	3
Heavy Duty					
1044	1400	1800	265.5 (70.1)	185.0 (48.9)	3

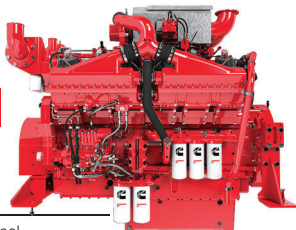
For more information on average fuel consumption and emissions, refer to the Reference Materials section.

PRODUCT DIMENSIONS

Length	mm (in)	2282	(90)
Width	mm (in)	1573	(62)
Height	mm (in)	2242	(88)
Weight	kg (lb)	4850	(10692)
Weight (aftertreatment)	kg (lb)	1136	(2504)

Dimensions may vary based on selected engine configuration.

QSK38 EPA T4/IMO III MAIN PROPULSION



GENERAL SPECIFICATIONS

Configuration	V-12 cylinder, 4-stroke diesel	
Aspiration	Turbocharged / Aftercooled	
Displacement	38 L	2300 in ³
Bore & Stroke	159 x 159 mm	6.25 x 6.25 in
Rotation	Counterclockwise facing flywheel	
Fuel System	Modular Common Rail System (MCRS)	

COMMERCIAL RATINGS

			FUEL CONSUMPTION		EMISSIONS	
kW	BHP	RPM	Rated L/hr (Gal/hr)	ISO Avg L/hr (Gal/hr)	IMO	EPA
Continuous						
746	1000	1800	187.0 (49.4)	121.8 (32.2)	3	4
969	1300	1800	244.0 (64.5)	154.6 (40.8)	3	4
1044	1400	1800	266.0 (70.3)	176.1 (44.1)	3	4
1119	1500	1800	283.5 (74.9)	176.9 (46.7)	3	4

For more information on average fuel consumption and emissions, refer to the Reference Materials section.

PRODUCT DIMENSIONS

Length	mm (in)	2417	(95)
Width	mm (in)	1624	(64)
Height	mm (in)	2358	(93)
Weight (engine only)	kg (lb)	4850	(10692)
Weight (engine w/HX)	kg (lb)	5060	(11155)
Weight (aftertreatment)	kg (lb)	420	(926)

Dimensions may vary based on selected engine configuration.

KTA50

MAIN PROPULSION

GENERAL SPECIFICATIONS

Configuration	V-16 cylinder, 4-stroke diesel	
Aspiration	Turbocharged / Aftercooled	
Displacement	50 L	3067 in ³
Bore & Stroke	159 x 159 mm	6.25 x 6.25 in
Fuel System	Pressure Time (PT)	

COMMERCIAL RATINGS

kW	BHP	RPM	FUEL CONSUMPTION		EMISSIONS		
			Rated L/hr (Gal/hr)	ISO Avg L/hr (Gal/hr)	IMO	EPA	EU
Continuous							
1044	1400	1600	261.3 (69.0)	179.0 (47.3)	1	—	—
1193	1600	1800	290.7 (76.8)	209.1 (55.2)	1	—	—
1193	1600	1800	303.6 (80.2)	209.5 (55.3)	2	—	—
Heavy Duty							
1193	1600	1900	299.7 (79.2)	208.5 (55.1)	1	—	—
1268	1700	1800	309.9 (81.9)	221.2 (58.4)	1	—	—
1342	1800	1900	336.0 (88.8)	232.8 (61.5)	1	—	—
1342	1800	1900	345.8 (91.3)	236.7 (62.5)	2	—	—
Medium Continuous							
1398	1875	1950	348.0 (91.9)	248.6 (65.7)	1	—	—

For more information on average fuel consumption and emissions, refer to the Reference Materials section.

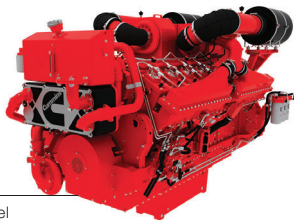
PRODUCT DIMENSIONS

Length	mm (in)	2694	(106)
Width	mm (in)	1564	(62)
Height	mm (in)	2260	(89)
Weight	kg (lb)	5166	(11389)

Dimensions may vary based on selected engine configuration.

QSK50

MAIN PROPULSION



GENERAL SPECIFICATIONS

Configuration	V-16 cylinder, 4-stroke diesel	
Aspiration	Turbocharged / Aftercooled	
Displacement	50 L	3068 in ³
Bore & Stroke	159 x 159 mm	6.25 x 6.25 in
Fuel System	Modular Common Rail System (MCRS)	

COMMERCIAL RATINGS

kW	BHP	RPM	FUEL CONSUMPTION		EMISSIONS		
			Rated L/hr (Gal/hr)	ISO Avg L/hr (Gal/hr)	IMO	EPA	EU
Continuous							
1268	1700	1600	311.5 (82.3)	220.5 (58.2)	2	—	—
1268	1700	1600	320.7 (84.7)	231.8 (61.2)	2	3	—
1268	1700	1800	324.3 (85.7)	223.9 (59.1)	2	—	—
Heavy Duty							
1342	1800	1600	335.3 (88.6)	238.2 (62.9)	2	—	—
1342	1800	1800	346.6 (91.6)	235.8 (62.3)	2	—	—
1342	1800	1800	350.5 (92.6)	248.2 (65.6)	2	3	—
1342	1800	1900	353.3 (93.3)	240.0 (63.4)	2	—	—
1342	1800	1900	353.3 (93.3)	253.3 (66.9)	2	3	—
Medium Continuous							
1529	2050	1800	388.2 (102.6)	271.0 (71.6)	2	—	—
1641	2200	1900	426.7 (112.7)	287.6 (76.0)	2	—	—

For more information on average fuel consumption and emissions, refer to the Reference Materials section.

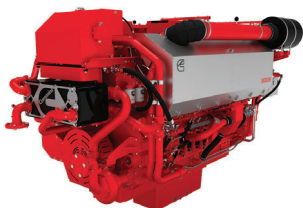
PRODUCT DIMENSIONS

Length	mm (in)	2780	(109)
Width	mm (in)	1573	(62)
Height	mm (in)	2232	(88)
Weight	kg (lb)	6270	(13823)

Dimensions may vary based on selected engine configuration.

QSK60

MAIN PROPULSION



GENERAL SPECIFICATIONS

Configuration	V-16 cylinder, 4-stroke diesel	
Aspiration	Turbocharged / Aftercooled	
Displacement	60.2 L	3672 in ³
Bore & Stroke	159 x 190 mm	6.25 x 7.48 in
Fuel System	Modular Common Rail System (MCRS)	

COMMERCIAL RATINGS

kW	BHP	RPM	FUEL CONSUMPTION		EMISSIONS		
			Rated L/hr (Gal/hr)	ISO Avg L/hr (Gal/hr)	IMO	EPA	EU
Continuous							
1491	2000	1600	361.2 (95.4)	255.6 (67.5)	2	—	—
1491	2000	1600	371.2 (98.1)	266.2 (70.3)	2	3	—
1491	2000	1800	376.8 (99.5)	257.5 (68.0)	2	—	—
1641	2200	1800	428.7 (113.3)	293.5 (77.5)	2	3	—
1641	2200	1800	404.4 (106.8)	280.8 (74.2)	2	—	—
Heavy Duty							
1715	2300	1900	434.4 (114.8)	296.3 (78.3)	2	—	—
Medium Continuous							
1864	2500	1800	463.2 (122.4)	314.6 (83.1)	2	—	—
1864	2500	1900	462.2 (122.1)	322.6 (85.2)	2	—	—
1864	2500	1900	506.9 (129.8)	333.7 (88.2)	2	3	—
2013	2700	1800	502.3 (132.7)	339.2 (89.6)	2	—	—
2013	2700	1900	506.9 (133.9)	352.6 (93.2)	2	—	—
Intermittent							
1998	2680	1900	521.9 (137.9)	358.9 (94.8)	2	3	—

For more information on average fuel consumption and emissions, refer to the Reference Materials section.

See next page for product dimensions.

QSK60

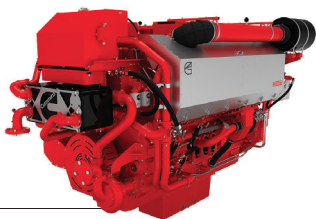
MAIN PROPULSION (continued)

PRODUCT DIMENSIONS

Length	mm (in)	3290	(130)
Width	mm (in)	1757	(69)
Height	mm (in)	2415	(95)
Weight	kg (lb)	8754	(19300)

Dimensions may vary based on selected engine configuration.

QSK60 IMO III MAIN PROPULSION



GENERAL SPECIFICATIONS

Configuration	V-16 cylinder, 4-stroke diesel	
Aspiration	Turbocharged / Aftercooled	
Displacement	60.2 L	3672 in ³
Bore & Stroke	159 x 190 mm	6.25 x 7.48 in
Rotation	Counterclockwise facing flywheel	
Fuel System	Modular Common Rail System (MCRS)	

COMMERCIAL RATINGS

			FUEL CONSUMPTION		EMISSIONS
kW	BHP	RPM	Rated L/hr (Gal/hr)	ISO Avg L/hr (Gal/hr)	IMO
Continuous					
1641	2200	1800	404.4 (106.8)	280.8 (74.2)	3
Medium Continuous					
1864	2500	1800	463.2 (122.4)	314.6 (83.1)	3
2013	2700	1800	502.3 (132.7)	339.2 (89.6)	3
2013	2700	1900	506.9 (133.9)	352.6 (93.2)	3

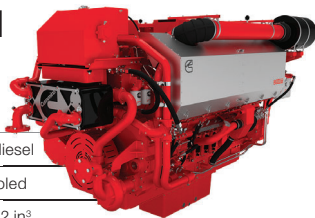
For more information on average fuel consumption and emissions, refer to the Reference Materials section.

PRODUCT DIMENSIONS

Length	mm (in)	3290	(130)
Width	mm (in)	1757	(69)
Height	mm (in)	2415	(95)
Weight	kg (lb)	8754	(19300)
A/T Weight	kg (lb)	1308	(2884)

Dimensions may vary based on selected engine configuration.

QSK60 EPA T4/IMOIII MAIN PROPULSION



GENERAL SPECIFICATIONS

Configuration	V-16 cylinder, 4-stroke diesel	
Aspiration	Turbocharged / Aftercooled	
Displacement	60.2 L	3672 in ³
Bore & Stroke	159 x 190 mm	6.25 x 7.48 in
Fuel System	Modular Common Rail System (MCRS)	

COMMERCIAL RATINGS

kW	BHP	RPM	FUEL CONSUMPTION		EMISSIONS		
			Rated L/hr (Gal/hr)	ISO Avg L/hr (Gal/hr)	IMO	EPA	EU
Continuous							
1491	2000	1600	349 (92.3)	249 (65.8)	3	4	—
1641	2200	1800	394 (104.7)	279 (73.7)	3	4	—
Heavy Duty							
1864	2500	1900	469 (123.8)	320.9 (84.8)	3	4	—
Medium Continuous							
2013	2700	1800	494 (130.7)	340.8 (90)	3	4	—

For more information on average fuel consumption and emissions, refer to the Reference Materials section.

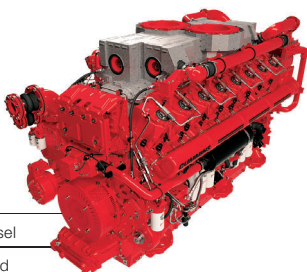
PRODUCT DIMENSIONS

Length	mm (in)	3343	(132)
Width	mm (in)	1757	(69)
Height	mm (in)	2172	(86)
Weight	kg (lb)	8770	(19335)
A/T Weight	kg (lb)	1308	(2884)

Dimensions may vary based on selected engine configuration.

QSK95

MAIN PROPULSION



GENERAL SPECIFICATIONS

Configuration	V-16 cylinder, 4-stroke diesel	
Aspiration	Turbocharged / Aftercooled	
Displacement	95 L	5797 in ³
Bore & Stroke	190 x 210 mm	7.48 x 8.27 in
Fuel System	Modular Common Rail System (MCRS)	

COMMERCIAL RATINGS

kW	BHP	RPM	FUEL CONSUMPTION		EMISSIONS		
			Rated L/hr (Gal/hr)	ISO Avg L/hr (Gal/hr)	IMO	EPA	EU
Continuous							
2386	3200	1500	548.7 (145.0)	392.0 (103.6)	2	—	—
Heavy Duty							
2685	3600	1700*	629.6 (166.3)	449.6 (118.8)	2	—	—
Medium Continuous							
2983	4000	1700*	699.8 (184.9)	489.1 (129.2)	2	—	—
Intermittent							
3132	4200	1700*	745.2 (196.9)	512.3 (135.3)	2	—	—

For more information on average fuel consumption and emissions, refer to the Reference Materials section.

* Rating offers constant power between rated RPM +100 RPM.

PRODUCT DIMENSIONS

Length	mm (in)	3654	(144)
Width	mm (in)	1732	(68)
Height	mm (in)	2362	(93)
Weight	kg (lb)	12916	(28475)

Dimensions may vary based on selected engine configuration.

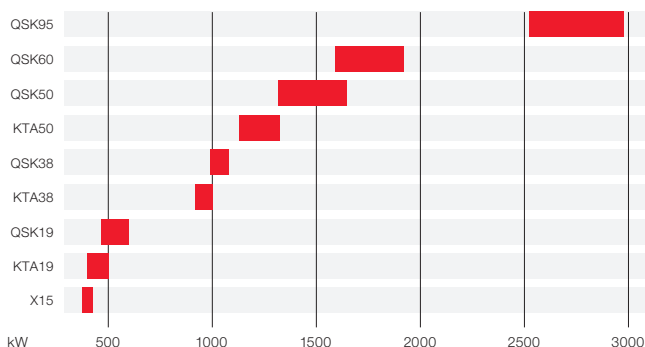


CUMMINS DIESEL ELECTRIC

With a decade of experience and hundreds of diesel electric packages in operation globally, Cummins is one of the pioneers in diesel electric propulsion.



POWER RANGE FOR CUMMINS MARINE AUXILIARY ENGINES FOR DIESEL ELECTRIC PROPULSION



RATING DEFINITIONS

Prime Power: Engines with this rating are available for an unlimited number of hours per year in variable load applications. Variable load is not to exceed a 80 percent average of the rated power. A 10 percent overload capability is available for a period of one hour within a 12 hour period of operation. Total operating time at the 10 percent overload power shall not exceed 25 hours per year. This power rating follows ISO 8528 guidelines.

Variable Speed Auxiliary: Engines with this rating are available for an unlimited number of hours per year in variable speed and load applications. Variable load is not to exceed an 80 percent average of the rated power. A 10 percent overload capability is available for a period of one hour within a 12 hour period of operation. Total operating time at the 10 percent overload power shall not exceed 25 hours per year. This power rating follows ISO 8528 guidelines.

DIESEL ELECTRIC RATINGS

kW	BHP	Engine Model	Fuel System	Page	Fuel Consumption (L/hr (Gal/hr))		Emissions		
					Rated	ISO Avg	IMO	EPA	EU
50 Hz Fixed Speed Ratings									
358	480	KTA19	Mechanical	54	91.2 (24.1)	47.1 (12.5)	2	—	—
373	500	X15	Electronic	53	88.9 (23.5)	45.1 (11.9)	2	—	—
410	550	KTA19	Mechanical	54	102.6 (27.1)	52.5 (13.9)	2	—	—
433	580	QSK19	Electronic	55	111.1 (29.3)	57.9 (15.3)	2	—	—
526	705	QSK19	Electronic	55	133.7 (35.3)	66.2 (17.5)	2	—	—
880	1180	KTA38	Mechanical	57	216.7 (57.2)	115.2 (30.4)	2	—	—
984	1320	QSK38	Electronic	58	234.3 (61.9)	124.6 (32.9)	2	—	—
1096	1470	KTA50	Mechanical	61	275.9 (72.9)	141.9 (37.5)	2	—	—
1290	1730	QSK50	Electronic	62	308.8 (81.4)	162.8 (42.9)	2	—	—
1563	2095	QSK60	Electronic	64	378.1 (99.9)	192.1 (50.7)	2	—	—
1899	2547	QSK60	Electronic	64	451.8 (119.3)	222.7 (58.8)	2	—	—
2625	3520	QSK95	Electronic	67	619.0 (163.5)*	N/A	2	—	—
60 Hz Fixed Speed Ratings									
425	570	KTA19	Mechanical	54	106.4 (28.1)	58.8 (15.5)	2	—	—
373	500	X15	Electronic	53	99.3 (26.2)	45.7 (12.1)	2	3	—
425	570	X15	Electronic	53	103.9 (27.5)	52.7 (13.9)	2	3	—
485	650	KTA19	Mechanical	54	120.8 (31.9)	64.7 (17.1)	2	—	—
563	755	QSK19	Electronic	55	142.3 (37.6)	72.4 (18.8)	2	—	—
563	755	QSK19	Electronic	55	148.5 (39.2)	75.8 (20.0)	2	3	—
597	800	QSK19	Electronic	55	158.1 (41.8)	81.9 (21.6)	2	3	—
970	1300	KTA38	Mechanical	57	243.2 (64.2)	132.2 (34.9)	2	—	—
1044	1400	QSK38	Electronic	58	262.6 (69.4)	144.2 (38.1)	2	3	—
1044	1400	QSK38	Electronic	58	252.5 (66.7)	135.8 (35.9)	2	—	—
1290	1730	KTA50	Mechanical	61	314.6 (83.1)	161.4 (42.6)	2	—	—
1342	1800	QSK50	Electronic	62	339.3 (89.6)	184.2 (48.7)	2	3	—
1342	1800	QSK50	Electronic	62	332.3 (87.8)	177.3 (46.8)	2	—	—
1628	2183	QSK50	Electronic	62	413.8 (109.3)	209.7 (55.4)	2	—	—
1899	2547	QSK60	Electronic	64	486.3 (128.5)	239.8 (63.4)	2	—	—
2001	2683	QSK60	Electronic	64	480.3 (126.9)	244.2 (64.5)	2	—	—
3150	4224	QSK95	Electronic	67	765.9 (202.3)*	N/A	2	—	—



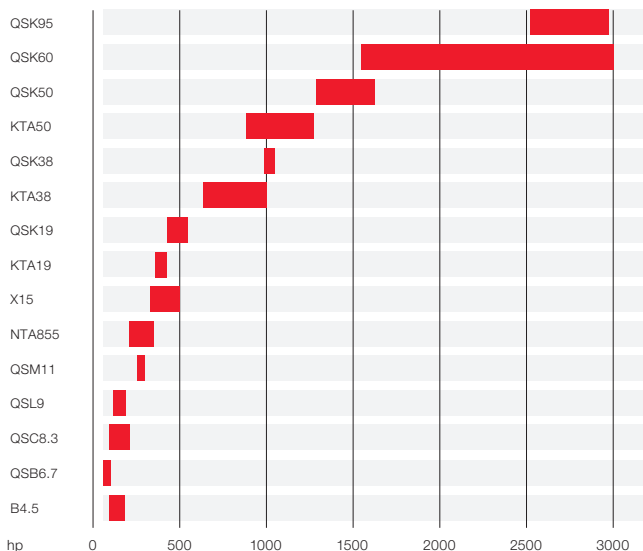
CUMMINS MARINE AUXILIARIES

Cummins offers a complete line of constant and variable speed marine power solutions designed specifically for auxiliary applications, including electrical power generation for emergency or ship service power, diesel electric propulsion, power units, fire pumps and hydraulic units.



MS Servio: The 110 by 11.45-meter inland river tanker is powered by a QSK38M1 main and an X15 auxiliary.

POWER RANGE FOR CUMMINS MARINE AUXILIARY ENGINES



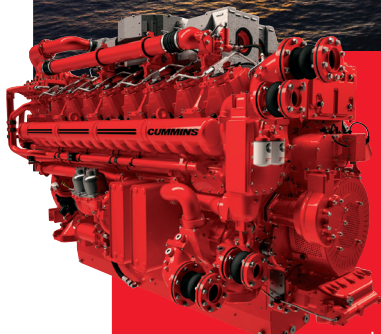
RATING DEFINITIONS

Prime Power: Engines with this rating are available for an unlimited number of hours per year in variable load applications. Variable load is not to exceed a 80 percent average of rated power. A 10 percent overload capability is available for a period of one hour within a 12 hour period of operation. Total operating time at 10 percent overload power shall not exceed 25 hours per year. This power rating follows ISO 8528 guidelines.

Emergency Auxiliary Power: Engines with this rating must only be applied as an emergency backup to the primary vessel auxiliary power. An Emergency rated engine should be sized for a maximum of an 80% average load factor and limited to 200 hours of operation per year. This power rating follows ISO 8528 guidelines.

Variable Speed Auxiliary: Engines with this rating are available for an unlimited number of hours per year in variable speed and load applications. Variable load is not to exceed an 80 percent average of the rated power. A 10 percent overload capability is available for a period of one hour within a 12 hour period of operation. Total operating time at the 10 percent overload power shall not exceed 25 hours per year. This power rating follows ISO 8528 guidelines.

INNOVATION POWERING SUCCESS AROUND THE GLOBE.

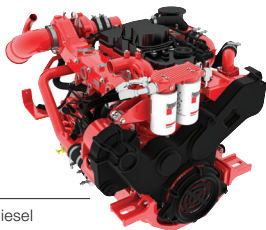


Cummins innovative power solutions can be seen not just in high profile marine applications but all around you – in airports, hospitals, homes, data centers, trains and trucks. We leverage this proven technological leadership and global service presence to deliver a comprehensive suite of power solutions for commercial marine vessels ranging from 4-3132 kW. This includes Cummins customer-friendly IMO Tier III strategy, which delivers maximum flexibility, performance and convenience with a low total cost of ownership.



B4.5

MARINE AUXILIARY



GENERAL SPECIFICATIONS

Configuration	In-line, 4 cylinder, 4-stroke diesel	
Aspiration	Turbocharged / Aftercooled	
Displacement	4.5 L	272 in ³
Bore & Stroke	107 x 124 mm	4.21 x 4.88 in
Fuel System	High Pressure Common Rail (HPCR)	

AUXILIARY RATINGS

kW	BHP	RPM	FUEL CONSUMPTION		EMISSIONS		
			Rated L/hr (Gal/hr)	ISO Avg L/hr (Gal/hr)	IMO	EPA	EU
Prime Power at 50 Hz*							
76	102	1500	21.6 (5.7)	10.9 (2.9)	-	-	5
91	122	1500	24.6 (6.5)	12.2 (3.2)	-	-	5
112	150	1500	30.1 (7.9)	14.7 (3.9)	-	-	5
Prime Power at 60 Hz							
76	102	1800	22.2 (5.9)	11.6 (3.1)	-	3	-
91	122	1800	26.5 (7.0)	13.4 (3.5)	-	3	-
112	150	1800	29.9 (7.9)	14.8 (3.9)	-	3	-
129	173	1800	33.9 (8.9)	16.8 (4.4)	-	3	-

Prime Power: Engines with this rating are available for an unlimited number of hours per year in variable load applications. Variable load is not to exceed a 80 percent average of the rated power. A 10 percent overload capability is available for a period of one hour within a 12 hour period of operation. Total operating time at the 10 percent overload power shall not exceed 25 hours per year. This power rating follows ISO 8528 guidelines.

Ratings below 130 kW are not subject to IMO emission regulations.

PRODUCT DIMENSIONS

Length	mm (in)	508	(20)
Width	mm (in)	862	(34)
Height	mm (in)	877	(35)
Weight	kg (lb)	545	(1202)

Dimensions may vary based on selected engine configuration.

6BT5.9

MARINE AUXILIARY

GENERAL SPECIFICATIONS

Configuration	In-line, 6 cylinder, 4-stroke diesel	
Aspiration	Turbocharged	
Displacement	5.9 L	359 in ³
Bore & Stroke	102 x 120 mm	4.02 x 4.75 in
Fuel System	Inline Injection Pump	

AUXILIARY RATINGS

kW	BHP	RPM	FUEL CONSUMPTION		EMISSIONS		
			Rated L/hr (Gal/hr)	ISO Avg L/hr (Gal/hr)	IMO	EPA	EU
Prime Power at 50 Hz							
78	104	1500	19.8 (5.2)	10.7 (2.8)	—	—	—
91	122	1500	22.4 (5.9)	11.3 (3.0)	—	—	—
Prime Power at 60 Hz							
91	122	1800	23.4 (6.2)	12.7 (3.3)	—	—	—
112	150	1800	27.1 (7.2)	14.0 (3.7)	—	—	—

Ratings below 130 kW are not subject to IMO emission regulations
For more information on average fuel consumption and emissions, refer to the Reference Materials section.

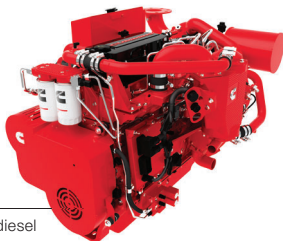
PRODUCT DIMENSIONS

Length	mm (in)	1020	(40)
Width	mm (in)	601	(24)
Height	mm (in)	1201	(47)
Weight	kg (lb)	426	(940)

Dimensions may vary based on selected engine configuration.

QSB7

MARINE AUXILIARY



GENERAL SPECIFICATIONS

Configuration	In-line, 6 cylinder, 4-stroke diesel	
Aspiration	Turbocharged	
Displacement	6.7 L	408 in ³
Bore & Stroke	107 x 124 mm	4.21 x 4.88 in
Fuel System	High Pressure Common Rail (HPCR)	

AUXILIARY RATINGS

kW	BHP	RPM	FUEL CONSUMPTION		EMISSIONS		
			Rated L/hr (Gal/hr)	ISO Avg L/hr (Gal/hr)	IMO	EPA	EU
Prime Power at 50 Hz							
122	164	1500	33.4 (8.8)	16.6 (4.4)	2	3	—
164	220	1500	46.0 (12.2)	22.7 (6.0)	2	3	—
Prime Power at 60 Hz							
98	132	1800	28.1 (7.4)	15.0 (4.0)	2	3	—
112	150	1800	31.7 (8.4)	16.6 (4.4)	2	3	—
130	174	1800	36.0 (9.5)	18.4 (4.9)	2	3	—
142	190	1800	39.2 (10.4)	19.8 (5.2)	2	3	—
186	250	1800	51.8 (13.7)	25.2 (6.7)	2	3	—
210	282	1800	58.1 (15.4)	28.4 (7.5)	2	3	—

Ratings below 130 kW are not subject to IMO emission regulations
 For more information on average fuel consumption and emissions, refer to the Reference Materials section.

PRODUCT DIMENSIONS

Length	mm (in)	1280	(50)
Width	mm (in)	941	(37)
Height	mm (in)	926	(36)
Weight	kg (lb)	708	(1561)

Dimensions may vary based on selected engine configuration.

6CT8.3

MARINE AUXILIARY

GENERAL SPECIFICATIONS

Configuration	In-line, 6 cylinder, 4-stroke diesel	
Aspiration	Turbocharged	
Displacement	8.3 L	504.5 in ³
Bore & Stroke	114 x 135 mm	4.49 x 5.32 in
Fuel System	Inline Injection Pump	

AUXILIARY RATINGS

			FUEL CONSUMPTION		EMISSIONS		
kW	BHP	RPM	Rated L/hr (Gal/hr)	ISO Avg L/hr (Gal/hr)	IMO	EPA	EU
Prime Power at 50 Hz							
122	164	1500	30.3 (8.0)	14.9 (3.9)	1	—	—
Prime Power at 60 Hz							
140	188	1800	36.3 (9.6)	18.7 (4.9)	1	—	—

For more information on average fuel consumption and emissions, refer to the Reference Materials section.

PRODUCT DIMENSIONS

Length	mm (in)	1182	(47)
Width	mm (in)	710	(28)
Height	mm (in)	1137	(45)
Weight	kg (lb)	683	(1506)

Dimensions may vary based on selected engine configuration.

6CTA8.3

MARINE AUXILIARY

GENERAL SPECIFICATIONS

Configuration	In-line, 6 cylinder, 4-stroke diesel	
Aspiration	Turbocharged / Aftercooled	
Displacement	8.3 L	504.5 in ³
Bore & Stroke	114 x 135 mm	4.49 x 5.32 in
Fuel System	Inline Injection Pump	

AUXILIARY RATINGS

			FUEL CONSUMPTION		EMISSIONS		
kW	BHP	RPM	Rated L/hr (Gal/hr)	ISO Avg L/hr (Gal/hr)	IMO	EPA	EU
Prime Power at 50 Hz							
163	219	1500	40.1 (10.6)	19.3 (5.1)	1	—	—
164	220	1500	41.3 (10.9)	20.5 (5.4)	1	—	—
Prime Power at 60 Hz							
172	230	1800	47.3 (12.5)	23.0 (6.1)	—	—	—
180	242	1800	46.6 (12.3)	23.4 (6.2)	1	—	—
188	252	1800	47.3 (12.5)	23.0 (6.1)	1	—	—
201	270	1800	56.6 (14.9)	27.1 (7.2)	2	—	—

For more information on average fuel consumption and emissions, refer to the Reference Materials section.

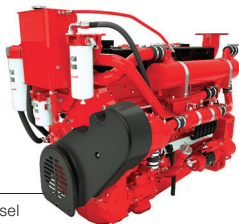
PRODUCT DIMENSIONS

Length	mm (in)	1182	(47)
Width	mm (in)	710	(28)
Height	mm (in)	1137	(45)
Weight	kg (lb)	702	(1548)

Dimensions may vary based on selected engine configuration.

QSM11

MARINE AUXILIARY



GENERAL SPECIFICATIONS

Configuration	In-line, 6 cylinder, 4-stroke diesel	
Aspiration	Turbocharged / Aftercooled	
Displacement	10.8 L	661 in ³
Bore & Stroke	125 x 147 mm	4.92 x 5.79 in
Fuel System	Celect	

AUXILIARY RATINGS

kW	BHP	RPM	FUEL CONSUMPTION		EMISSIONS		
			Rated L/hr (Gal/hr)	ISO Avg L/hr (Gal/hr)	IMO	EPA	EU
Prime Power at 50 Hz							
265	355	1500	65.0 (17.2)	32.1 (8.5)	2	—	—
Prime Power at 60 Hz							
265	355	1800	65.4 (17.3)	33.7 (8.9)	2	—	—
265	355	1800	68.2 (18.0)	35.3 (9.3)	2	3	—
317	425	1800	78.6 (20.8)	39.2 (10.4)	2	—	—
317	425	1800	82.9 (21.9)	41.6 (11.0)	2	3	—

For more information on average fuel consumption and emissions, refer to the Reference Materials section.

PRODUCT DIMENSIONS

Length	mm (in)	1475	(58)
Width	mm (in)	1081	(43)
Height	mm (in)	1039	(41)
Weight	kg (lb)	1118	(2464)

Dimensions may vary based on selected engine configuration.

NT855

MARINE AUXILIARY

GENERAL SPECIFICATIONS

Configuration	In-line, 6 cylinder, 4-stroke diesel	
Aspiration	Turbocharged	
Displacement	14 L	855 in ³
Bore & Stroke	140 x 152 mm	5.50 x 6.00 in
Fuel System	Pressure Time (PT)	

AUXILIARY RATINGS

kW	BHP	RPM	FUEL CONSUMPTION		EMISSIONS		
			Rated L/hr (Gal/hr)	ISO Avg L/hr (Gal/hr)	IMO	EPA	EU
Prime Power at 50 Hz							
306	410	1500	N/A	N/A	—	—	—
Prime Power at 60 Hz							
254	340	1800	N/A	N/A	—	—	—
295	395	1800	N/A	N/A	—	—	—

For more information on average fuel consumption and emissions, refer to the Reference Materials section. For additional standard options available regionally, contact your local Cummins distributor

PRODUCT DIMENSIONS

Length	mm (in)	1298	(61)
Width	mm (in)	817	(32)
Height	mm (in)	1376	(54)
Weight	kg (lb)	1388	(3060)

Dimensions may vary based on selected engine configuration.

NTA855

MARINE AUXILIARY

GENERAL SPECIFICATIONS

Configuration	In-line, 6 cylinder, 4-stroke diesel	
Aspiration	Turbocharged / Aftercooled	
Displacement	14 L	855 in ³
Bore & Stroke	140 x 152 mm	5.50 x 6.00 in
Fuel System	Pressure Time (PT)	

AUXILIARY RATINGS

			FUEL CONSUMPTION		EMISSIONS		
kW	BHP	RPM	Rated L/hr (Gal/hr)	ISO Avg L/hr (Gal/hr)	IMO	EPA	EU
Prime Power at 60 Hz							
313	420	1800	N/A	N/A	1	—	—
358	480	1800	86.7 (22.9)	N/A	1	—	—

For more information on average fuel consumption and emissions, refer to the Reference Materials section. For additional standard options available regionally, contact your local Cummins distributor.

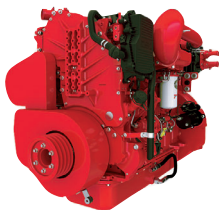
PRODUCT DIMENSIONS

Length	mm (in)	1298	(61)
Width	mm (in)	817	(32)
Height	mm (in)	1376	(53)
Weight	kg (lb)	1433	(3160)

Dimensions may vary based on selected engine configuration.

X15

MARINE AUXILIARY



GENERAL SPECIFICATIONS

Configuration	In-line, 6 cylinder, 4-stroke diesel	
Aspiration	Turbocharged / Aftercooled	
Displacement	14.9 L	912 in ³
Bore & Stroke	137 x 169 mm	5.39 x 6.65 in
Rotation	Counterclockwise facing flywheel	
Fuel System	Cummins XPI	

AUXILIARY RATINGS

kW	BHP	RPM	FUEL CONSUMPTION		EMISSIONS		
			Rated L/hr (Gal/hr)	ISO Avg L/hr (Gal/hr)	IMO	EPA	EU
Prime Power at 50Hz							
373	500	1500	88.2 (23.3)	45.2 (11.9)	2	—	—
Prime Power at 60Hz							
373	500	1800	96.2 (25.4)	48.1 (12.7)	2	3	—
425	570	1800	103.9 (27.4)	52.7 (13.9)	2	3	—

For more information on average fuel consumption and emissions, refer to the Reference Materials section.

PRODUCT DIMENSIONS

Length	mm (in)	1712	(67)
Width	mm (in)	1067	(42)
Height	mm (in)	1234	(49)
Weight	kg (lb)	1724	(3801)

Dimensions may vary based on selected engine configuration.

KTA19

MARINE AUXILIARY

GENERAL SPECIFICATIONS

Configuration	In-line, 6 cylinder, 4-stroke diesel	
Aspiration	Turbocharged / Aftercooled	
Displacement	19 L	1150 in ³
Bore & Stroke	159 x 159 mm	6.25 x 6.25 in
Fuel System	Pressure Time (PT)	

AUXILIARY RATINGS

			FUEL CONSUMPTION		EMISSIONS		
kW	BHP	RPM	Rated L/hr (Gal/hr)	ISO Avg L/hr (Gal/hr)	IMO	EPA	EU
Prime Power at 50 Hz							
336	450	1500	82.5 (21.8)	44.8 (11.8)	—	—	—
403	540	1500	96.5 (25.5)	49.5 (13.1)	1	—	—
447	600	1500	107.5 (28.4)	54.2 (14.3)	—	—	—
358	480	1500	91.2 (24.1)	47.1 (12.5)	2	—	—
410	550	1500	102.6 (27.1)	52.5 (13.9)	2	—	—
Prime Power at 60 Hz							
392	525	1800	98.4 (26.0)	53.6 (14.2)	—	—	—
425	570	1800	106.4 (28.1)	58.8 (15.5)	2	—	—
462	620	1800	110.9 (29.3)	59.3 (15.7)	1	—	—
485	650	1800	120.8 (31.9)	64.7 (17.1)	2	—	—
507	680	1800	122.3 (32.3)	62.5 (16.5)	—	—	—

For more information on average fuel consumption and emissions, refer to the Reference Materials section. For additional standard options available regionally, contact your local Cummins distributor.

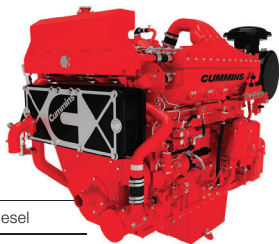
PRODUCT DIMENSIONS

Length	mm (in)	1877	(74)
Width	mm (in)	1003	(40)
Height	mm (in)	1905	(75)
Weight	kg (lb)	2073	(4570)

Dimensions may vary based on selected engine configuration.

QSK19

MARINE AUXILIARY



GENERAL SPECIFICATIONS

Configuration	In-line, 6 cylinder, 4-stroke diesel	
Aspiration	Turbocharged / Aftercooled	
Displacement	19 L	1150 in ³
Bore & Stroke	159 x 159 mm	6.25 x 6.25 in
Fuel System	Modular Common Rail System (MCRS)	

AUXILIARY RATINGS

kW	BHP	RPM	FUEL CONSUMPTION		EMISSIONS		
			Rated L/hr (Gal/hr)	ISO Avg L/hr (Gal/hr)	IMO	EPA	EU
Prime Power at 50 Hz							
433	580	1500	111.1 (29.3)	57.9 (15.3)	2	—	—
526	705	1500	133.7 (35.3)	66.2 (17.5)	2	—	—
Prime Power at 60 Hz							
563	755	1800	142.3 (37.6)	72.4 (18.8)	2	—	—
563	755	1800	148.5 (39.2)	75.8 (20.0)	2	3	—
597	800	1800	158.1 (41.8)	81.9 (21.6)	2	3	—

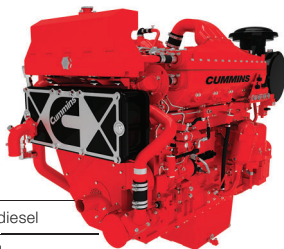
For more information on average fuel consumption and emissions, refer to the Reference Materials section.

PRODUCT DIMENSIONS

Length	mm (in)	2007	(79)
Width	mm (in)	963	(38)
Height	mm (in)	1880	(74)
Weight	kg (lb)	2189	(4825)

Dimensions may vary based on selected engine configuration.

QSK19 IMO III MARINE AUXILIARY



GENERAL SPECIFICATIONS

Configuration	In-line, 6 cylinder, 4-stroke diesel	
Aspiration	Turbocharged / Aftercooled	
Displacement	19 L	1150 in ³
Bore & Stroke	159 x 159 mm	6.25 x 6.25 in
Rotation	Counterclockwise facing flywheel	
Fuel System	Modular Common Rail System (MCRS)	

AUXILIARY RATINGS

			FUEL CONSUMPTION		EMISSIONS
kW	BHP	RPM	Rated L/hr (Gal/hr)	ISO Avg L/hr (Gal/hr)	IMO
Prime Power at 50 Hz					
433	580	1500	111.1 (29.3)	57.9 (15.3)	3
526	705	1500	133.7 (35.3)	66.2 (17.5)	3
Prime Power at 60 Hz					
597	800	1800	158.1 (41.8)	81.9 (21.6)	3

For more information on average fuel consumption and emissions, refer to the Reference Materials section.

PRODUCT DIMENSIONS

Length	mm (in)	2007	(79)
Width	mm (in)	963	(38)
Height	mm (in)	1880	(74)
Weight	kg (lb)	2189	(4825)
A/T Weight	kg (lb)	447	(986)

Dimensions may vary based on selected engine configuration.

KTA38

MARINE AUXILIARY

GENERAL SPECIFICATIONS

Configuration	V-12 cylinder, 4-stroke diesel	
Aspiration	Turbocharged / Aftercooled	
Displacement	38 L	2300 in ³
Bore & Stroke	159 x 159 mm	6.25 x 6.25 in
Fuel System	Pressure Time (PT)	

AUXILIARY RATINGS

kW	BHP	RPM	FUEL CONSUMPTION		EMISSIONS		
			Rated L/hr (Gal/hr)	ISO Avg L/hr (Gal/hr)	IMO	EPA	EU
Prime Power at 50 Hz							
634	850	1500	160.0 (42.3)	84.3 (22.3)	1	—	—
664	890	1500	167.0 (44.2)	87.5 (23.1)	—	—	—
746	1000	1500	176.8 (46.7)	91.7 (24.2)	1	—	—
806	1080	1500	194.0 (51.3)	103.7 (27.4)	—	—	—
880	1180	1500	208.6 (55.1)	109.4 (28.9)	—	—	—
880	1180	1500	215.9 (57.0)	109.0 (28.8)	1	—	—
880	1180	1500	216.7 (57.2)	115.2 (30.4)	2	—	—
Prime Power at 60 Hz							
768	1030	1800	195.0 (51.5)	104.4 (27.6)	—	—	—
809	1085	1800	204.4 (54.0)	108.6 (28.7)	2	—	—
821	1100	1800	195.7 (51.7)	104.0 (27.5)	1	—	—
910	1220	1800	217.7 (57.5)	116.8 (30.9)	—	—	—
970	1300	1800	240.0 (63.4)	129.3 (34.2)	1	—	—
970	1300	1800	243.2 (64.2)	132.2 (34.9)	2	—	—
1007	1350	1800	244.5 (64.6)	131.6 (34.8)	—	—	—

For more information on average fuel consumption and emissions, refer to the Reference Materials section.

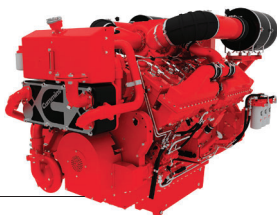
PRODUCT DIMENSIONS

Length	mm (in)	2152	(84)
Width	mm (in)	1462	(58)
Height	mm (in)	2083	(82)
Weight	kg (lb)	4301	(9482)

Dimensions may vary based on selected engine configuration.

QSK38

MARINE AUXILIARY



GENERAL SPECIFICATIONS

Configuration	V-12 cylinder, 4-stroke diesel	
Aspiration	Turbocharged / Aftercooled	
Displacement	38 L	2300 in ³
Bore & Stroke	159 x 159 mm	6.25 x 6.25 in
Fuel System	Modular Common Rail System (MCRS)	

AUXILIARY RATINGS

kW	BHP	RPM	FUEL CONSUMPTION		EMISSIONS		
			Rated L/hr (Gal/hr)	ISO Avg L/hr (Gal/hr)	IMO	EPA	EU
Prime Power at 50 Hz							
984	1320	1500	234.3 (61.9)	124.6 (32.9)	2	—	—
Prime Power at 60 Hz							
1044	1400	1800	262.6 (69.4)	144.2 (38.1)	2	3	—
1044	1400	1800	252.5 (66.7)	135.8 (35.9)	2	—	—

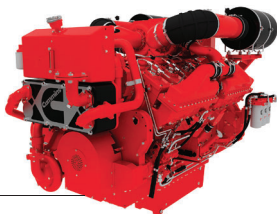
For more information on average fuel consumption and emissions, refer to the Reference Materials section.

PRODUCT DIMENSIONS

Length	mm (in)	2282	(90)
Width	mm (in)	1573	(62)
Height	mm (in)	2242	(88)
Weight	kg (lb)	4850	(10692)

Dimensions may vary based on selected engine configuration.

QSK38 IMO III MARINE AUXILIARY



GENERAL SPECIFICATIONS

Configuration	V-12 cylinder, 4-stroke diesel	
Aspiration	Turbocharged / Aftercooled	
Displacement	38 L	2300 in ³
Bore & Stroke	159 x 159 mm	6.25 x 6.25 in
Fuel System	Modular Common Rail System (MCRS)	

AUXILIARY RATINGS

kW	BHP	RPM	FUEL CONSUMPTION		EMISSIONS		
			Rated L/hr (Gal/hr)	ISO Avg L/hr (Gal/hr)	IMO	EPA	EU
Prime Power at 60 Hz							
1044	1400	1800	258.7 (68.3)	136.6 (36.1)	3	3	—

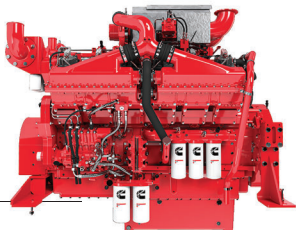
For more information on average fuel consumption and emissions, refer to the Reference Materials section.

PRODUCT DIMENSIONS

Length	mm (in)	2282	(90)
Width	mm (in)	1573	(62)
Height	mm (in)	2242	(88)
Weight	kg (lb)	4850	(10692)
Weight (aftertreatment)	kg (lb)	1136	(2504)

Dimensions may vary based on selected engine configuration.

QSK38 EPA T4/IMO III MARINE AUXILIARY



GENERAL SPECIFICATIONS

Configuration	V-12 cylinder, 4-stroke diesel	
Aspiration	Turbocharged / Aftercooled	
Displacement	38 L	2300 in ³
Bore & Stroke	159 x 159 mm	6.25 x 6.25 in
Rotation	Counterclockwise facing flywheel	
Fuel System	Modular Common Rail System (MCRS)	

AUXILIARY RATINGS

			FUEL CONSUMPTION		EMISSIONS	
kW	BHP	RPM	Rated L/hr (Gal/hr)	ISO Avg L/hr (Gal/hr)	IMO	EPA
Prime Power at 60 Hz						
1044	1400	1800	263.8 (69.7)	133.8 (35.4)	3	4
Variable Speed Auxiliary						
1044	1400	1800	263.0 (69.5)	139.7 (36.9)	3	4

For more information on average fuel consumption and emissions, refer to the Reference Materials section.

PRODUCT DIMENSIONS

Length	mm (in)	2417	(95)
Width	mm (in)	1624	(64)
Height	mm (in)	2358	(93)
Weight (engine only)	kg (lb)	4850	(10692)
Weight (engine w/HX)	kg (lb)	5060	(11155)
Weight (aftertreatment)	kg (lb)	420	(926)

Dimensions may vary based on selected engine configuration.

KTA50

MARINE AUXILIARY

GENERAL SPECIFICATIONS

Configuration	V-16 cylinder, 4-stroke diesel	
Aspiration	Turbocharged / Aftercooled	
Displacement	50 L	3067 in ³
Bore & Stroke	159 x 159 mm	6.25 x 6.25 in
Fuel System	Pressure Time (PT)	

AUXILIARY RATINGS

			FUEL CONSUMPTION		EMISSIONS		
kW	BHP	RPM	Rated L/hr (Gal/hr)	ISO Avg L/hr (Gal/hr)	IMO	EPA	EU
Prime Power at 50 Hz							
880	1180	1500	217.3 (57.4)	116.8 (30.9)	—	—	—
900	1206	1500	252.9 (66.8)	N/A	—	—	—
1007	1350	1500	228.9 (60.5)	118.9 (31.4)	1	—	—
1096	1470	1500	267.0 (70.5)	141.4 (37.3)	1	—	—
1096	1470	1500	275.9 (72.9)	141.9 (37.5)	2	—	—
1097	1470	1500	253.6 (67.0)	134.1 (35.4)	—	—	—
Prime Power at 60 Hz							
1000	1340	1800	N/A	N/A	—	—	—
1007	1350	1800	N/A	138.1 (36.5)	—	—	—
1141	1530	1800	262.7 (69.4)	138.6 (36.6)	1	—	—
1220	1635	1800	282.0 (74.5)	153.7 (40.6)	—	—	—
1290	1730	1800	320.8 (84.7)	168.6 (44.6)	1	—	—
1290	1730	1800	314.6 (83.1)	161.4 (42.6)	2	—	—

For more information on average fuel consumption and emissions, refer to the Reference Materials section.

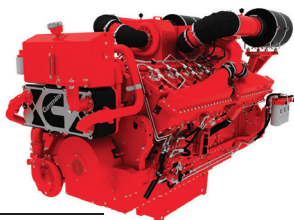
PRODUCT DIMENSIONS

Length	mm (in)	2694	(106)
Width	mm (in)	1564	(62)
Height	mm (in)	2260	(89)
Weight	kg (lb)	4853	(10700)

Dimensions may vary based on selected engine configuration.

QSK50

MARINE AUXILIARY



GENERAL SPECIFICATIONS

Configuration	V-16 cylinder, 4-stroke diesel	
Aspiration	Turbocharged / Aftercooled	
Displacement	50 L	3068 in ³
Bore & Stroke	159 x 159 mm	6.25 x 6.25 in
Fuel System	Modular Common Rail System (MCRS)	

AUXILIARY RATINGS

kW	BHP	RPM	FUEL CONSUMPTION		EMISSIONS		
			Rated L/hr (Gal/hr)	ISO Avg L/hr (Gal/hr)	IMO	EPA	EU
Prime Power at 50 Hz							
1290	1730	1500	308.0 (81.4)	162.5 (42.9)	2	—	—
Prime Power at 60 Hz							
1342	1800	1800	339.3 (89.6)	184.2 (48.7)	2	3	—
1342	1800	1800	332.3 (87.8)	177.3 (46.8)	2	—	—
1628	2183	1800	413.8 (109.3)	209.7 (55.4)	2	—	—

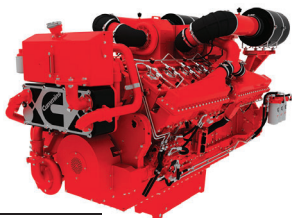
For more information on average fuel consumption and emissions, refer to the Reference Materials section.

PRODUCT DIMENSIONS

Length	mm (in)	2780	(109)
Width	mm (in)	1573	(62)
Height	mm (in)	2232	(88)
Weight	kg (lb)	6270	(13823)

Dimensions may vary based on selected engine configuration.

QSK50 IMO III MARINE AUXILIARY



GENERAL SPECIFICATIONS

Configuration	V-16 cylinder, 4-stroke diesel	
Aspiration	Turbocharged / Low Temp. Aftercooled	
Displacement	50.3 L	3068 in ³
Bore & Stroke	159 x 159 mm	6.25 x 6.25 in
Rotation	Counterclockwise facing flywheel	
Fuel System	Modular Common Rail System (MCRS)	

AUXILIARY RATINGS

			FUEL CONSUMPTION		EMISSIONS
kW	BHP	RPM	Rated L/hr (Gal/hr)	ISO Avg L/hr (Gal/hr)	IMO
Prime Power at 50 Hz					
1290	1730	1500	316.6 (83.6)	164.9 (43.5)	3
Prime Power at 60 Hz					
1342	1800	1800	339.9 (89.8)	177.6 (46.9)	3
1628	2183	1800	405.1 (107.0)	211.0 (55.7)	3

For more information on average fuel consumption and emissions, refer to the Reference Materials section.

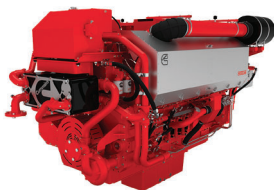
PRODUCT DIMENSIONS

Length	mm (in)	2780	(109)
Width	mm (in)	1573	(62)
Height	mm (in)	2232	(88)
Weight	kg (lb)	6270	(13,823)
A/T Weight	kg (lb)	1308	(2884)

Dimensions may vary based on selected engine configuration.

QSK60

MARINE AUXILIARY



GENERAL SPECIFICATIONS

Configuration	V-16 cylinder, 4-stroke diesel	
Aspiration	Turbocharged / Aftercooled	
Displacement	60.2 L	3672 in ³
Bore & Stroke	159 x 190 mm	6.25 x 7.48 in
Fuel System	Modular Common Rail System (MCRS)	

AUXILIARY RATINGS

kW	BHP	RPM	FUEL CONSUMPTION		EMISSIONS		
			Rated L/hr (Gal/hr)	ISO Avg L/hr (Gal/hr)	IMO	EPA	EU
Prime Power at 50 Hz							
1563	2095	1500	378.1 (99.9)	192.1 (50.7)	2	—	—
1899	2547	1500	451.8 (119.3)	222.7 (58.8)	2	—	—
Prime Power at 60 Hz							
1900	2547	1800	486.3 (128.5)	239.8 (63.4)	2	—	—
1900	2547	1800	494.9 (130.7)	259.0 (68.4)	2	3	—
2001	2683	1800	480.3 (126.9)	244.2 (64.5)	2	—	—
Emergency Auxiliary at 60 Hz							
2237	3000	1800	552.3 (145.9)	282.9 (74.7)	—	—	—

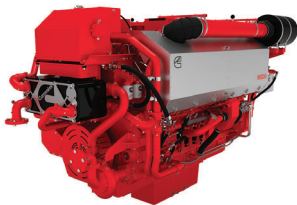
For more information on average fuel consumption and emissions, refer to the Reference Materials section.

PRODUCT DIMENSIONS

Length	mm (in)	3290	(130)
Width	mm (in)	1757	(69)
Height	mm (in)	2415	(95)
Weight	kg (lb)	8754	(19300)

Dimensions may vary based on selected engine configuration.

QSK60 IMO III MARINE AUXILIARY



GENERAL SPECIFICATIONS

Configuration	V-16 cylinder, 4-stroke diesel	
Aspiration	Turbocharged / Aftercooled	
Displacement	60.2 L	3672 in ³
Bore & Stroke	159 x 190 mm	6.25 x 7.48 in
Rotation	Counterclockwise facing flywheel	
Fuel System	Modular Common Rail System (MCRS)	

AUXILIARY RATINGS

			FUEL CONSUMPTION		EMISSIONS
kW	BHP	RPM	Rated L/hr (Gal/hr)	ISO Avg L/hr (Gal/hr)	IMO
Prime Power at 50 Hz					
1563	2095	1500	378.1 (99.9)	192.1 (50.7)	3
1899	2547	1500	451.8 (119.3)	224.7 (59.4)	3
Prime Power at 60 Hz					
1900	2547	1800	486.3 (128.5)	243.6 (64.4)	3
2001	2683	1800	480.3 (126.9)	247.5 (65.4)	3

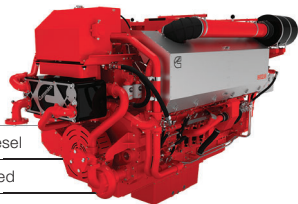
For more information on average fuel consumption and emissions, refer to the Reference Materials section.

PRODUCT DIMENSIONS

Length	mm (in)	3290	(130)
Width	mm (in)	1757	(69)
Height	mm (in)	2415	(95)
Weight	kg (lb)	8754	(19300)
A/T Weight	kg (lb)	1308	2884

Dimensions may vary based on selected engine configuration.

QSK60 EPA T4 / IMO III MARINE AUXILIARY



GENERAL SPECIFICATIONS

Configuration	V-16 cylinder, 4-stroke diesel	
Aspiration	Turbocharged / Aftercooled	
Displacement	60.2 L	3672 in ³
Bore & Stroke	159 x 190 mm	6.25 x 7.48 in
Fuel System	Modular Common Rail System (MCRS)	

AUXILIARY RATINGS

			FUEL CONSUMPTION		EMISSIONS	
kW	BHP	RPM	Rated L/hr (Gal/hr)	ISO Avg L/hr (Gal/hr)	IMO	EPA
Prime Power at 60 Hz						
2001	2683	1800	533 (140.9)	245.6 (64.9)	3	4

For more information on average fuel consumption and emissions, refer to the Reference Materials section.

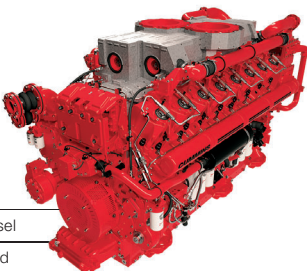
PRODUCT DIMENSIONS

Length	mm (in)	3353	(132)
Width	mm (in)	1781	(70)
Height	mm (in)	2171	(85)
Weight	kg (lb)	8770	(19335)
A/T Weight	kg (lb)	1308	(2884)

Dimensions may vary based on selected engine configuration.

QSK95

MARINE AUXILIARY



GENERAL SPECIFICATIONS

Configuration	V-16 cylinder, 4-stroke diesel	
Aspiration	Turbocharged / Aftercooled	
Displacement	95 L	5797 in ³
Bore & Stroke	190 x 210 mm	7.48 x 8.27 in
Fuel System	Modular Common Rail System (MCRS)	

AUXILIARY RATINGS

			FUEL CONSUMPTION		EMISSIONS		
kW	BHP	RPM	Rated L/hr (Gal/hr)	ISO Avg L/hr (Gal/hr)	IMO	EPA	EU
Prime Power at 50 Hz							
2625	3520	1500	601.2 (158.8)	308.2 (81.4)	2	—	—
Prime Power at 60 Hz							
3150	4224	1800	754.0 (199.2)	308.2 (81.4)	2	—	—

For more information on average fuel consumption and emissions, refer to the Reference Materials section.

PRODUCT DIMENSIONS

Length	mm (in)	3654	(144)
Width	mm (in)	1732	(63)
Height	mm (in)	2362	(93)
Weight	kg (lb)	12916	(28475)

Dimensions may vary based on selected engine configuration.

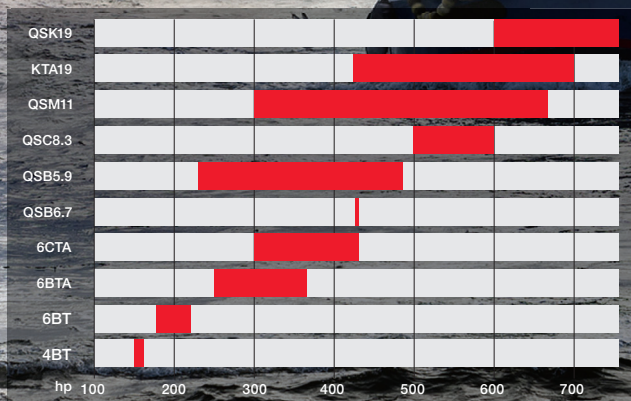


CUMMINS RECON[®] PRODUCTS:

Genuine Cummins ReCon engines and parts provide you with a cost-effective, environmentally friendly, no-surprise solution that quickly puts your Cummins powered equipment back to work. Cummins ReCon products are not simply repaired or rebuilt; they are remanufactured in authorized factories around the world.



POWER RANGE FOR CUMMINS RECON PRODUCTS



Cummins offers factory remanufactured parts for all engine models. In addition Cummins remanufactures Short Blocks, Long Blocks and Heavy-Duty L10, M, N and ISX/QSX engine platforms, as well as, MidRange B, C and ISL/QSL engine platforms.

The following describes the measures Cummins takes to remanufacture its engines and parts, creating a product that is comparable to a new Cummins product.

- » **Core Acceptance:** A great benefit of Cummins remanufacturing is that you can get money back for exchanging your worn out engine or part. Any Cummins authorized repair facility worldwide can perform the simple visual inspection on your old part and give you immediate credit toward its replacement.
- » **Disassembly:** Engines and parts are completely disassembled with great care to protect and prepare key components for processing — right down to the last screw, nut, bolt and spring.
- » **Cleaning:** Each part is carefully cleaned using the latest technology to remove debris without removing any metal, including the use of dry ice, enzymes and lasers for specialized cleaning needs.
- » **Inspection:** The latest technology, including ultrasonic inspection, is just one of the many methods used to verify that every ReCon part meets original factory specifications.
- » **Restoration:** Cummins uses a variety of techniques to ensure that parts meet original specifications or improved standards of performance. If a part doesn't meet specifications, it is scrapped and replaced with a new Genuine Cummins part. Any upgrades or supercessions that have taken place in the years since the original part was made will be included as part of the Cummins remanufacturing process.
- » **Testing:** Validation testing using fail-safe processes verifies that the performance and reliability of the finished product meet Cummins standards.
- » **Reintroduction:** Once the remanufacturing process is complete Cummins engines and parts are ready to be reintroduced into the field.

Genuine Cummins New and ReCon Parts are built to meet or exceed your engine's original specifications for performance, reliability and durability. For more information about Cummins ReCon products, please visit cummins.com or contact your local Cummins distributor or authorized dealer.

4BT RECON

MAIN PROPULSION



GENERAL SPECIFICATIONS

Configuration	In-line, 6 cylinder, 4-stroke diesel	
Aspiration	Turbocharged / Aftercooled	
Displacement	3.9 L	239 in ³
Bore & Stroke	102 x 119 mm	4.02 x 4.72 in
Fuel System	Rotary	

RECON RATINGS

kW	BHP	RPM	FUEL CONSUMPTION		EMISSIONS		
			Rated L/hr (Gal/hr)	ISO Avg L/hr (Gal/hr)	IMO	EPA	EU
Intermittent							
112	150	2800	28.8 (7.6)	N/A	—	—	—
High Output							
112	150	2800	28.8 (7.6)	N/A	—	—	—

For more information on average fuel consumption and emissions, refer to the Reference Materials section.

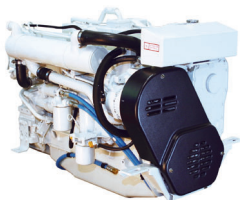
PRODUCT DIMENSIONS

Length	mm (in)	707	(27.8)
Width	mm (in)	772	(30.4)
Height	mm (in)	793	(31.2)
Weight	kg (lb)	360	(794)

Dimensions may vary based on selected engine configuration.

6BT RECON

MAIN PROPULSION



GENERAL SPECIFICATIONS

Configuration	In-line, 6 cylinder, 4-stroke diesel	
Aspiration	Turbocharged / Aftercooled	
Displacement	5.9 L	359 in ³
Bore & Stroke	102 x 119 mm	4.02 x 4.72 in
Fuel System	Rotary	

RECON RATINGS

kW	BHP	RPM	FUEL CONSUMPTION		EMISSIONS		
			Rated L/hr (Gal/hr)	ISO Avg L/hr (Gal/hr)	IMO	EPA	RCD
Medium Continuous							
134	180	2500	N/A	N/A	—	—	—
Intermittent							
157	210	2600	44.9 (11.9)	N/A	1	—	—
High Output							
157	210	2600	44.9 (11.9)	N/A	1	—	1

For more information on average fuel consumption and emissions, refer to the Reference Materials section.

PRODUCT DIMENSIONS

Length	mm (in)	1074	(42.3)
Width	mm (in)	711	(28)
Height	mm (in)	812	(32)
Weight	kg (lb)	465	(1025)

Dimensions may vary based on selected engine configuration.

QSB5.9 RECON

MAIN PROPULSION

GENERAL SPECIFICATIONS

Configuration	In-line, 6 cylinder, 4-stroke diesel	
Aspiration	Turbocharged / Aftercooled	
Displacement	5.9 L	359 in ³
Bore & Stroke	102 x 119 mm	4.02 x 4.72 in
Fuel System	High Pressure Common Rail (HPCR)	

RECON RATINGS

kW	BHP	RPM	FUEL CONSUMPTION		EMISSIONS		
			Rated L/hr (Gal/hr)	ISO Avg L/hr (Gal/hr)	IMO	EPA	EU
Heavy Duty							
169	227	2600	42.2 (11.1)	29.6 (7.8)	—	2	—
Medium Continuous							
224	300	2600	57.3 (15.1)	38.7 (10.2)	—	2	—
Intermittent							
261	350	2800	68.1 (18.0)	45.8 (12.1)	—	2	—
Light Duty							
280	375	3000	76.2 (20.1)	49.7 (13.1)	—	2	—
313	420	3000	87.6 (23.1)	N/A	—	2	—
352	472	3400	97.4 (25.7)	63.9 (16.9)	—	2	—
High Output							
169	227	2600	42.2 (11.1)	29.6 (7.8)	—	2	—
224	300	2600	57.3 (15.1)	38.7 (10.2)	—	2	—
242	325	2800	63.3 (16.7)	42.7 (11.3)	—	2	—
261	350	2800	68.1 (18.0)	45.8 (12.1)	—	2	—
280	375	3000	76.2 (20.1)	49.7 (13.1)	—	2	—
325	436	3400	90.6 (23.9)	N/A	—	2	—
352	472	3400	97.4 (25.7)	63.9 (16.9)	—	2	—

For more information on average fuel consumption and emissions, refer to the Reference Materials section.

See next page for product dimensions.

QSB5.9 RECON

MAIN PROPULSION

(continued)

PRODUCT DIMENSIONS

Length	mm (in)	1036	(40.8)
Width	mm (in)	836	(32.9)
Height	mm (in)	831	(32.7)
Weight	kg (lb)	658	(1450)

Dimensions may vary based on selected engine configuration.

6BTA RECON

MAIN PROPULSION

GENERAL SPECIFICATIONS

Configuration	In-line, 6 cylinder, 4-stroke diesel	
Aspiration	Turbocharged / Aftercooled	
Displacement	5.9 L	359 in ³
Bore & Stroke	102 x 119 mm	4.02 x 4.72 in
Fuel System	Inline Injection Pump	

RECON RATINGS

kW	BHP	RPM	FUEL CONSUMPTION		EMISSIONS		
			Rated L/hr (Gal/hr)	ISO Avg L/hr (Gal/hr)	IMO	EPA	RCD
Intermittent							
194	260	2600	56.8 (15.0)	N/A	1	—	—
235	315	2800	63.7 (16.8)	N/A	1	—	—
High Output							
184	247	2600	N/A	N/A	1	—	—
194	260	2600	56.8 (15.0)	N/A	1	—	1
214	287	2800	N/A	N/A	1	—	—
235	315	2800	63.7 (16.8)	N/A	1	—	1
265	355	3000	76.1 (20.1)	N/A	1	—	1

For more information on average fuel consumption and emissions, refer to the Reference Materials section.

PRODUCT DIMENSIONS

Length	mm (in)	1028	(40.5)
Width	mm (in)	826	(32.5)
Height	mm (in)	837	(33)
Weight	kg (lb)	469	(1035)

Dimensions may vary based on selected engine configuration.

6CTA RECON

MAIN PROPULSION

GENERAL SPECIFICATIONS

Configuration	In-line, 6 cylinder, 4-stroke diesel	
Aspiration	Turbocharged / Aftercooled	
Displacement	8.3 L	504.5 in ³
Bore & Stroke	114 x 135 mm	4.49 x 5.32 in
Fuel System	Inline Injection Pump	

RECON RATINGS

kW	BHP	RPM	FUEL CONSUMPTION		EMISSIONS		
			Rated L/hr (Gal/hr)	ISO Avg L/hr (Gal/hr)	IMO	EPA	RCD
Medium Continuous							
221	300	2500	N/A	N/A	—	—	—
Intermittent							
316	430	2600	89.0 (23.4)	59.2 (15.6)	1	—	—
High Output							
316	430	2600	89.0 (23.4)	59.2 (15.6)	1	—	1

For more information on average fuel consumption and emissions, refer to the Reference Materials section.

PRODUCT DIMENSIONS

Length	mm (in)	1177	(41)
Width	mm (in)	849	(33.4)
Height	mm (in)	954	(37.5)
Weight	kg (lb)	712	(1570)

Dimensions may vary based on selected engine configuration.

QSB6.7 RECON

MAIN PROPULSION



GENERAL SPECIFICATIONS

Configuration	In-line, 6 cylinder, 4-stroke diesel	
Aspiration	Turbocharged / Aftercooled	
Displacement	6.7 L	408 in ³
Bore & Stroke	107 x 124 mm	4.21 x 4.88 in
Fuel System	High Pressure Common Rail (HPCR)	

RECON RATINGS

kW	BHP	RPM	FUEL CONSUMPTION		EMISSIONS		
			Rated L/hr (Gal/hr)	ISO Avg L/hr (Gal/hr)	IMO	EPA	EU
Intermittent							
313	419	3000	82.2 (21.7)	55.0 (14.5)	2	3	—
High Output							
313	419	3000	81.1 (21.4)	55.0 (14.5)	2	3	—

For more information on average fuel consumption and emissions, refer to the Reference Materials section.

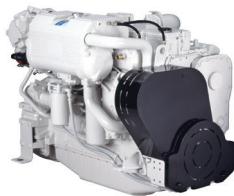
PRODUCT DIMENSIONS

Length	mm (in)	1074	(42)
Width	mm (in)	898	(35)
Height	mm (in)	857	(34)
Weight	kg (lb)	634	(1398)

Dimensions may vary based on selected engine configuration.

QSC8.3 RECON

MAIN PROPULSION



GENERAL SPECIFICATIONS

Configuration	In-line, 6 cylinder, 4-stroke diesel	
Aspiration	Turbocharged / Aftercooled	
Displacement	8.3 L	505 in ³
Bore & Stroke	114 x 135 mm	4.49 x 5.31 in
Fuel System	High Pressure Common Rail (HPCR)	

RECON RATINGS

kW	BHP	RPM	FUEL CONSUMPTION		EMISSIONS		
			Rated L/hr (Gal/hr)	ISO Avg L/hr (Gal/hr)	IMO	EPA	EU
Intermittent							
368	493	2600	96.1 (25.4)	N/A	—	2	—
Light Duty							
442	593	3000	123.1 (32.5)	N/A	—	2	—
High Output							
368	493	2600	96.1 (25.4)	N/A	—	2	—
405	543	3000	112.7 (29.8)	N/A	—	2	—
442	593	3000	123.1 (32.5)	N/A	—	2	—

For more information on average fuel consumption and emissions, refer to the Reference Materials section.

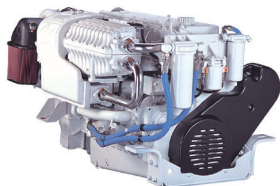
PRODUCT DIMENSIONS

Length	mm (in)	1036	(40.8)
Width	mm (in)	836	(32.9)
Height	mm (in)	831	(32.7)
Weight	kg (lb)	658	(1450)

Dimensions may vary based on selected engine configuration.

QSM11 RECON

MAIN PROPULSION



GENERAL SPECIFICATIONS

Configuration	In-line, 6 cylinder, 4-stroke diesel	
Aspiration	Turbocharged / Aftercooled	
Displacement	10.8 L	661 in ³
Bore & Stroke	125 x 147 mm	4.92 x 5.79 in
Fuel System	Celect	

RECON RATINGS

kW	BHP	RPM	FUEL CONSUMPTION		EMISSIONS		
			Rated L/hr (Gal/hr)	ISO Avg L/hr (Gal/hr)	IMO	EPA	EU
Continuous							
220	295	1800	55.2 (14.6)	39.4 (10.4)	—	2	—
261	350	1800	65.3 (17.2)	45.8 (12.1)	—	2	—
Heavy Duty							
298	400	2100	75.2 (19.9)	52.5 (13.9)	—	2	—
Medium Continuous							
336	450	2100	87.6 (23.1)	59.3 (15.7)	—	2	—
Intermittent							
449	602	2300	117 (30.8)	75.8 (20)	—	2	—
High Output							
220	295	1800	55.2 (14.6)	39.4 (10.4)	—	2	—
261	350	1800	65.3 (17.2)	45.8 (12.1)	—	2	—
298	400	2100	75.4 (19.9)	52.5 (13.9)	—	2	—
336	450	2100	87.6 (23.1)	59.3 (15.7)	—	2	—
449	602	2300	117 (30.8)	75.8 (20)	—	2	—
474	636	2300	128 (33.8)	N/A	—	2	—
493	661	2300	128 (33.8)	83.8 (22.1)	—	2	—

For more information on average fuel consumption and emissions, refer to the Reference Materials section.

PRODUCT DIMENSIONS

Length	mm (in)	1329	(82.3)
Width	mm (in)	1104	(43.5)
Height	mm (in)	1012	(39.9)
Weight	kg (lb)	1188	(2620)

Dimensions may vary based on selected engine configuration.

KTA19 RECON

MAIN PROPULSION

GENERAL SPECIFICATIONS

Configuration	In-line, 6 cylinder, 4-stroke diesel	
Aspiration	Turbocharged / Aftercooled	
Displacement	19 L	1150 in ³
Bore & Stroke	159 x 159 mm	6.25 x 6.25 in
Fuel System	Pressure Time (PT)	

RECON RATINGS

kW	BHP	RPM	FUEL CONSUMPTION		EMISSIONS		
			Rated L/hr (Gal/hr)	ISO Avg L/hr (Gal/hr)	IMO	EPA	EU
Continuous							
317	425	1800	N/A	N/A	—	—	—
373	500	1800	N/A	N/A	—	—	—
447	600	1800	111.1 (29.4)	N/A	—	—	—
Heavy Duty							
522	700	2100	143.0 (38.0)	N/A	—	—	—
522	700	2100	140.5 (36.1)	N/A	—	—	—
Medium Continuous							
410	550	2100	102.6 (27.1)	N/A	—	—	—

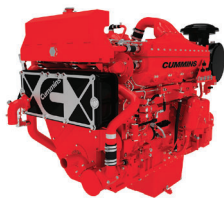
For more information on average fuel consumption and emissions, refer to the Reference Materials section.

PRODUCT DIMENSIONS

Length	mm (in)	1877	(74)
Width	mm (in)	1003	(40)
Height	mm (in)	1905	(75)
Weight	kg (lb)	2073	(4570)

Dimensions may vary based on selected engine configuration.

QSK19 RECON



GENERAL SPECIFICATIONS

Configuration	In-line, 6 cylinder, 4-stroke diesel	
Aspiration	Turbocharged / Aftercooled	
Displacement	19 L	1150 in ³
Bore & Stroke	159 x 159 mm	6.25 x 6.25 in
Fuel System	Modular Common Rail (MCRS)	

RECON RATINGS

kW	BHP	RPM	FUEL CONSUMPTION		EMISSIONS		
			Rated L/hr (Gal/hr)	ISO Avg L/hr (Gal/hr)	IMO	EPA	EU
Continuous (Propulsion)							
492	660	1800	128.1 (33.8)	N/A	—	—	—
Intermittent (Auxiliary)							
563	755	1800	148.5 (39.2)	N/A	—	—	—

For more information on average fuel consumption and emissions, refer to the Reference Materials section.

PRODUCT DIMENSIONS

Length	mm (in)	2007	(79)
Width	mm (in)	963	(38)
Height	mm (in)	1880	(74)
Weight	kg (lb)	2189	(4825)

Dimensions may vary based on selected engine configuration.



CUMMINS MARINE GENSETS

With more than 80 years of marine experience gained by supplying generators for commercial, recreational and government marine applications globally, Cummins marine generators offer the same reliability and durability operators have come to expect from Cummins.



Back Cove 37: A long-range cruiser that runs smoothly thanks to a QSC8.3 diesel engine and 9kW Onan genset

ONAN CRUISE KITS

The cruise kits provide all the necessary and essential generator maintenance and service parts boaters need for worry-free voyages. Enjoy peace-of-mind by having the parts on hand for routine maintenance.



The following parts are included:

- » (2) Oil filters
- » (1) Oil filter wrench (for MDKBJ/W only)
- » (2) Fuel filters
- » (2) Sea water pump impeller kit
- » (1) V-belt
- » (2) Zinc pencils (not required or included for the MDKBH/J/W)
- » Convenient plastic carrying case
- » Laminated marine service & maintenance schedule

For more information on available accessories, visit cummins.com.

4-5 kW

ONAN MARINE GENSET



HX- COOLED RATINGS

kWe	kVa*	Hz	RPM	Phase	Voltage	Amps	Emissions
Model MDKBH							
4	4	50	2400	1	110 220	36.4 18.2	
					115 230	34.8 17.4	
					120 240	33.3 16.6	
5	5	60	2900	1	120	41.7	EPA3
					120 240	41.7 20.8	

Ratings below 130 kW are not subject to IMO emission regulations.

* Single phase output at 1.0 power factor; three phase output at .8 power factor.

These models are available as ignition protected for use in gasoline powered vessels.

FUEL CONSUMPTION

kWe	Hz	1/4 Load L/hr (Gal/hr)	1/2 Load L/hr (Gal/hr)	3/4 Load L/hr (Gal/hr)	Full Load L/hr (Gal/hr)
KC- and HX- cooled ratings					
4	50	0.8 (0.21)	1.0 (0.28)	1.3 (0.35)	1.7 (0.44)
5	60	1.0 (0.27)	1.3 (0.35)	1.7 (0.44)	2.1 (0.55)

For more information on average fuel consumption and emissions, refer to the Reference Materials section.

PRODUCT DIMENSIONS

Length	mm (in)	662	(26)
Width	mm (in)	511	(20)
Height	mm (in)	524	(21)
Weight	kg (lb)	166	(365)

Dimensions may vary based on selected engine configuration.

6-8 kW

ONAN MARINE GENSET



HX- COOLED RATINGS

kWe	kVa*	Hz	RPM	Phase	Voltage	Amps	Emissions
Model MDKBJ							
6	6	50	2400	1	110 220	54.5 27.3	
					115 230	52.2 26.1	
					120 240	50.0 25.0	
7.5	7.5	60	2900	1	120	62.5	EPA3
					120 240	62.5 31.3	
Model MDKBW							
8	8	50	2880	1	110 220	72.7 36.4	
					115 230	69.6 34.8	
					120 240	66.6 33.3	

Ratings below 130 kW are not subject to IMO emission regulations.

* Single phase output at 1.0 power factor; three phase output at .8 power factor.

7.5 kWe Generator set is available as ignition protected for use in gasoline powered vessels.

FUEL CONSUMPTION

kWe	Hz	1/4 Load L/hr (Gal/hr)	1/2 Load L/hr (Gal/hr)	3/4 Load L/hr (Gal/hr)	Full Load L/hr (Gal/hr)
KC- and HX- cooled ratings					
6	50	1.12 (0.30)	1.46 (0.39)	1.84 (0.48)	2.28 (0.60)
7.5	60	1.40 (0.37)	1.84 (0.48)	2.33 (0.61)	2.93 (0.70)
8	50	1.41 (0.37)	1.85 (0.49)	2.35 (0.62)	2.97 (0.78)

For more information on average fuel consumption and emissions, refer to the Reference Materials section.

PRODUCT DIMENSIONS

Length	mm (in)	664	(26)
Width	mm (in)	583	(23)
Height	mm (in)	535	(21)
Weight	kg (lb)	195	(429)

Dimensions may vary based on selected engine configuration.

7-9 kW Space Saver ONAN MARINE GENSET



KC- AND HX- COOLED RATINGS

kWe	kVa*	Hz	RPM	Phase	Voltage	Amps	Emissions
Model MDKDK							
7	7	50	1500	1	110 220	63.6 31.8	—
					115 230	60.9 30.4	
					120 240	58.3 29.2	
9	9	60	1800	1	120	75	EPA3
					120 240	75 37.5	

Ratings below 130 kW are not subject to IMO emission regulations.

* Single phase output at 1.0 power factor; three phase output at .8 power factor.

FUEL CONSUMPTION

kWe	Hz	1/4 Load L/hr (Gal/hr)	1/2 Load L/hr (Gal/hr)	3/4 Load L/hr (Gal/hr)	Full Load L/hr (Gal/hr)
KC- and HX- cooled ratings					
7	50	1.1 (0.3)	1.5 (0.4)	2.0 (0.5)	2.8 (0.8)
9	60	1.3 (0.3)	1.9 (0.5)	2.6 (0.7)	3.8 (1.0)

For more information on average fuel consumption and emissions, refer to the Reference Materials section.

PRODUCT DIMENSIONS

Length	mm (in)	823	(32)
Width	mm (in)	479	(19)
Height	mm (in)	560	(22)
Weight	kg (lb)	238	(525)

Dimensions may vary based on selected engine configuration.

7-9 kW ONAN MARINE GENSET



KC- AND HX- COOLED RATINGS

kWe	kVa*	Hz	RPM	Phase	Voltage	Amps	Emissions
Model MDKDL							
7	7	50	1500	1	110 220	63.6 31.8	—
					115 230	60.9 30.4	
					120 240	58.3 29.2	
9	9	60	1800	1	120	75	EPA3
					120 240	75 37.5	

Ratings below 130 kW are not subject to IMO emission regulations.

* Single phase output at 1.0 power factor; three phase output at .8 power factor.

FUEL CONSUMPTION

kWe	Hz	1/4 Load L/hr (Gal/hr)	1/2 Load L/hr (Gal/hr)	3/4 Load L/hr (Gal/hr)	Full Load L/hr (Gal/hr)
KC- and HX- cooled ratings					
7	50	1.1 (0.3)	1.5 (0.4)	2.0 (0.5)	2.8 (0.8)
9	60	1.3 (0.3)	1.9 (0.5)	2.6 (0.7)	3.8 (1.0)

For more information on average fuel consumption and emissions, refer to the Reference Materials section.

PRODUCT DIMENSIONS

		HOUSED		UNHOUSED	
Length	mm (in)	911	(36)	911	(36)
Width	mm (in)	566	(22)	566	(22)
Height	mm (in)	593	(23)	585	(23)
Weight	kg (lb)	272	(600)	252	(555)

Dimensions may vary based on selected engine configuration.

9.5–13.5 kW ONAN MARINE GENSET



KC- AND HX- COOLED RATINGS

kWe	kVa*	Hz	RPM	Phase	Voltage	Amps	Emissions
Model MDKDM							
9.5	9.5	50	1500	1	110 220	86.4 43.2	—
					115 230	82.6 41.3	
					120 240	79.2 39.6	
11.5	11.5	60	1800	1	120	95.8	EPA3
					120 240	95.8 47.9	
Model MDKDN							
11	11	50	1500	1	110 220	100 50	—
					115 230	95.7 47.8	
					120 240	91.7 46	
13.5	13.5	60	1800	1	120	112.5	EPA3
					120 240	112 56.3	

Ratings below 130 kW are not subject to IMO emission regulations.

* Single phase output at 1.0 power factor; three phase output at .8 power factor.

FUEL CONSUMPTION

kWe	Hz	1/4 Load L/hr (Gal/hr)	1/2 Load L/hr (Gal/hr)	3/4 Load L/hr (Gal/hr)	Full Load L/hr (Gal/hr)
KC- and HX- cooled ratings					
9.5	50	1.4 (0.4)	2.1 (0.6)	2.8 (0.7)	3.4 (0.9)
11	50	1.5 (0.4)	2.2 (0.6)	3.0 (0.8)	4.0 (1.0)
11.5	60	1.7 (0.4)	2.5 (0.7)	3.2 (0.8)	3.9 (1.0)
13.5	60	1.8 (0.5)	2.6 (0.7)	3.6 (1.0)	4.5 (1.2)

For more information on average fuel consumption and emissions, refer to the Reference Materials section.

PRODUCT DIMENSIONS

		HOUSED		UNHOUSED	
Length	mm (in)	1033	(41)	1033	(41)
Width	mm (in)	566	(22)	566	(22)
Height	mm (in)	593	(23)	585	(23)
Weight	kg (lb)	315	(695)	290	(640)

Dimensions may vary based on selected engine configuration.

13.5–21.5 kW

ONAN MARINE GENSET



KC- AND HX- COOLED RATINGS

kWe	kVa*	Hz	RPM	Phase	Voltage	Amps	Emissions
Model MDKDP							
13.5	13.5	50	1500	1	110 220	122.7 61.4	—
					115 230	117.4 58.7	
					120 240	112.5 56.3	
13.5	16.9	50	1500	3	220 380	25.6	—
17	17	60	1800	1	120 240	141.7 70.8	EPA3
17	21.1	60	1800	3	120 208	59	EPA3
Model MDKDR							
17.5	17.5	50	1500	1	110 220	159.1 79.5	—
					115 230	152.2 76.1	
					120 240	145.8 72.9	
17.5	21.9	50	1500	3	220 380	33.2	—
21.5	21.5	60	1800	1	120 240	179 89.6	EPA3
21.5	26.9	60	1800	3	120 208	74.6	EPA3
Model MDKDV							
19	19	50	1500	1	110 220	172.7 86.4	—
					115 230	165.2 82.6	
19	23.8	50	1500	3	220 380	36.1	—

Ratings below 130 kW are not subject to IMO emission regulations.

* Single phase output at 1.0 power factor; three phase output at .8 power factor.

FUEL CONSUMPTION

kWe	Hz	1/4 Load L/hr (Gal/hr)	1/2 Load L/hr (Gal/hr)	3/4 Load L/hr (Gal/hr)	Full Load L/hr (Gal/hr)
KC- and HX- cooled ratings					
13.5	50	1.9 (0.5)	2.7 (0.7)	3.6 (0.9)	4.8 (1.3)
17	60	2.6 (0.7)	3.6 (1.0)	4.8 (1.3)	6.1 (1.6)
17.5	50	2.3 (0.6)	3.4 (0.9)	4.7 (1.2)	6.5 (1.7)
19	50	2.5 (0.7)	3.9 (1.0)	5.2 (1.4)	6.6 (1.7)
21.5	60	2.9 (0.8)	4.1 (1.1)	5.7 (1.5)	8.2 (2.2)

For more information on average fuel consumption and emissions, refer to the Reference Materials section.

See next page for product dimensions.

13.5–21.5 kW

ONAN MARINE GENSET (continued)

PRODUCT DIMENSIONS

		HOUSED		UNHOUSED	
Length	mm (in)	1139	(44)	1133	(44)
Width	mm (in)	602	(24)	602	(24)
Height	mm (in)	698	(28)	667	(27)
Weight	kg (lb)	422	(930)	395	(870)

Dimensions may vary based on selected model.

22.5–29 kW ONAN MARINE GENSET



KC- AND HX- COOLED RATINGS

kWe	kVa*	Hz	RPM	Phase	Voltage	Amps	Emissions
Model MDKDT							
22.5	22.5	50	1500	1	110 220	205 102	—
					115 230	196 97.8	
					120 240	188 93.8	
22.5	28.1	50	1500	3	220 380	42.7	—
Model MDKDU							
27	27	50	1500	1	110 220	245 123	—
					115 230	235 117	
					120 240	225 113	
27	33.8	50	1500	3	220 380	51.3	—
Model MDKDS							
29	29	60	1800	1	120 240	241.7 120.8	EPA3
29	36.2	60	1800	3	120 208	100.6	EPA3

Ratings below 130 kW are not subject to IMO emission regulations.

* Single phase output at 1.0 power factor; three phase output at .8 power factor.

FUEL CONSUMPTION

kWe	Hz	1/4 Load L/hr (Gal/hr)	1/2 Load L/hr (Gal/hr)	3/4 Load L/hr (Gal/hr)	Full Load L/hr (Gal/hr)
KC- and HX- cooled ratings					
22.5	50	3.0 (0.8)	4.0 (1.1)	5.2 (1.4)	7.0 (1.8)
27	50	3.0 (0.8)	4.7 (1.2)	6.2 (1.6)	9.1 (2.4)
29	60	3.9 (1.0)	5.6 (1.5)	7.6 (2.0)	10.7 (2.8)

For more information on average fuel consumption and emissions, refer to the Reference Materials section.

PRODUCT DIMENSIONS

		HOUSED		UNHOUSED		
Length	mm (in)	1358	(54)	1358	(54)	
Width	mm (in)	622	(25)	622	(25)	
Height	mm (in)	761	(30)	731	(29)	
Weight	kg (lb)	601	(1325)	565	(1245)	MDKDT
		626	(1380)	590	(1300)	MDKDU
		626	(1380)	590	(1300)	MDKDS

Dimensions may vary based on selected engine configuration.

40 kW ONAN MARINE GENSET



PRIME POWER RATINGS

KC- and HX- cooled ratings

kWe	kVa*	Hz	RPM	Phase	Voltage	Amps	Emissions
Model MDDCW							
40	40	50	1500	1	110 220	363.6 181.8	—
					115 230	347.8 173.9	
					120 240	333.3 166.7	
40	50	50	1500	3	110 190	151.9	—
					115 200	144.3	
					120 208	138.8	
					110 220	131.2	
					115 230	125.5	
					120 240	120.3	
					220 380	76	
					230 400	72.2	
					240 416	69.4	
255 410	65.6						
Model MDDCU							
40	40	60	1800	1	120 240	333.3 166.7	EPA3
					120 208	138.8	
40	50	60	1800	3	127 220	131.2	EPA3
					120 240	120.3	
					139 240	120.3	
					240 416	69.4	
					255 440	65.6	
					277 480	60.1	
					115 230	69.4	
					220 380	131	

Ratings below 130 kW are not subject to IMO emission regulations.

* Single phase output at 1.0 power factor; three phase output at .8 power factor.

See next page for fuel consumption and product dimensions.

40 kW

ONAN MARINE GENSET (continued)

FUEL CONSUMPTION

kWe	Hz	1/4 Load L/hr (Gal/hr)	1/2 Load L/hr (Gal/hr)	3/4 Load L/hr (Gal/hr)	Full Load L/hr (Gal/hr)
KC- and HX- cooled ratings					
40	50	3.9 (1.0)	6.4 (1.7)	9.0 (2.4)	11.5 (3.0)
40	60	4.5 (1.2)	7.2 (1.9)	9.9 (2.6)	12.7 (3.4)

For more information on average fuel consumption and emissions, refer to the Reference Materials section.

PRODUCT DIMENSIONS

		HOUSED		UNHOUSED	
Length	mm (in)	1738	(69)	1734	(69)
Width	mm (in)	840	(33)	822	(32)
Height	mm (in)	1039	(41)	994	(39)
Weight	kg (lb)	1098	(2420)	998	(2200)

Dimensions may vary based on selected model.

50–65 kW ONAN MARINE GENSET



PRIME POWER RATINGS

KC- and HX- cooled ratings

kWe	kVa*	Hz	RPM	Phase	Voltage	Amps	Emissions
Model MDDCY							
50	50	50	1500	1	110 220	454.4 227.3	—
					115 230	434.8 217.4	
					120 240	416.7 208.3	
50	62.5	50	1500	3	110 190	189.9	—
					115 200	180.4	
					120 208	173.5	
					110 220	164	
					115 230	156.9	
					120 240	150.4	
					220 380	95	
					230 400	90.2	
240 416	86.7						
255 440	82						
Model MDDCS							
55	55	60	1800	1	120 240	458.4 229.2	EPA3
55	68.75	60	1800	3	120 208	190.8	EPA3
					127 220	180.4	
					120 240	165.4	
					139 240	165.4	
					240 416	95.4	
					255 440	90.2	
277 480	82.7						
Model MDDCT							
65	65	60	1800	1	120 240	541.7 270.8	EPA3
65	81.25	60	1800	3	120 208	225.5	EPA3
					127 220	213.2	
					120 240	195.5	
					139 240	195.5	
					240 416	112.8	
					255 440	106.6	
277 480	97.7						

Ratings below 130 kW are not subject to IMO emission regulations.

* Single phase output at 1.0 power factor; three phase output at .8 power factor.

See next page for fuel consumption and product dimensions.

50–65 kW

ONAN MARINE GENSET (continued)

FUEL CONSUMPTION

kWe	Hz	1/4 Load L/hr (Gal/hr)	1/2 Load L/hr (Gal/hr)	3/4 Load L/hr (Gal/hr)	Full Load L/hr (Gal/hr)
KC- and HX- cooled ratings					
50	50	4.6 (1.2)	7.6 (2.0)	10.8 (2.9)	14.1 (3.7)
55	60	5.5 (1.4)	9.3 (2.4)	13.0 (3.4)	16.8 (4.4)
65	60	5.8 (1.5)	10.7 (2.8)	14.3 (4.0)	19.7 (5.2)

For more information on average fuel consumption and emissions, refer to the Reference Materials section.

PRODUCT DIMENSIONS

		HOUSED		UNHOUSED	
Length	mm (in)	1738	(70)	1779	(70)
Width	mm (in)	840	(33)	822	(32)
Height	mm (in)	1039	(41)	994	(39)
Weight	kg (lb)	1167	(2752)	1067	(2352)

Dimensions may vary based on selected engine configuration.

40–80 kW

ONAN MARINE GENSET

PRIME POWER RATINGS

KC- and HX- cooled ratings

kWe	kVa*	Hz	RPM	Phase	Voltage	Amps	Emissions						
Model MDCT													
40	50	60	1800	3	120 208	139	EPA3						
					120 240	120							
					127 220	131							
					139 240	120							
					240 416	69							
					255 440	66							
40	40	50	1500	1	110 220	182	EU Stg V						
					120 240	167							
40	50	50	1500	3	110 190	152	EU Stg V						
					110 220	131							
					120 208	139							
					120 240	120							
					220 380	76							
55	55	60	1800	1	120 240	229	EPA3						
					55	68.8		60	1800	3	120 208	191	EPA3
											120 240	165	
											127 220	180	
											139 240	165	
55	68.8	50	1500	3	240 416	95	EU Stg V						
					255 440	90							
					277 480	83							
					110 190	209							
65	65	60	1800	1	120 240	271	EPA3						
					65	81.3		60	1800	3	120 208	226	EPA3
											120 240	196	
											127 220	213	
											139 240	196	
65	81.3	60	1800	3	240 416	113	EPA3						
					255 440	107							
					277 480	98							
					240 416	95							

See next page for continuation, fuel consumption and product dimensions.

40–80 kW

ONAN MARINE GENSET (continued)

PRIME POWER RATINGS (CONTINUED)

KC- and HX- cooled ratings

kWe	kVa*	Hz	RPM	Phase	Voltage	Amps	Emissions
Model MDCT							
65	81.3	50	1500	3	110 190	247	EU Stg V
					110 220	213	
					120 208	226	
					120 240	196	
					220 380	123	
					240 416	113	
80	100	60	1800	3	120 208	278	EPA3
					120 240	241	
					127 220	262	
					139 240	241	
					240 416	139	
					255 440	131	
277 480	120						

Ratings below 130 kW are not subject to IMO emission regulations.

* Single phase output at 1.0 power factor; three phase output at 0.8 power factor.

FUEL CONSUMPTION

kWe	Hz	1/4 Load L/hr (Gal/hr)	1/2 Load L/hr (Gal/hr)	3/4 Load L/hr (Gal/hr)	Full Load L/hr (Gal/hr)
KC- and HX- cooled ratings					
40	60	TBA	TBA	TBA	TBA
40	50	TBA	TBA	TBA	TBA
55	60	TBA	TBA	TBA	TBA
55	50	TBA	TBA	TBA	TBA
65	60	TBA	TBA	TBA	TBA
65	50	TBA	TBA	TBA	TBA
80	60	TBA	TBA	TBA	TBA

For more information on average fuel consumption and emissions, refer to the Reference Materials section.

PRODUCT DIMENSIONS

		HOUSED		UNHOUSED	
Length	mm (in)	1782	(70)	1779	(70)
Width	mm (in)	833	(33)	819	(32)
Height	mm (in)	1036	(41)	975	(38)
Weight	kg (lb)	1114	(2456)	TBA	(TBA)

Dimensions may vary based on selected engine configuration.

80–110 kW

ONAN MARINE GENSET

PRIME POWER RATINGS

KC- and HX- cooled ratings

kWe	kVa*	Hz	RPM	Phase	Voltage	Amps	Emissions
Model MDCT							
80	100	50	1500	3	110 190	304	EU Stg V
					110 220	262	
					120 208	278	
					120 240	241	
					220 380	152	
					240 416	139	
85	85	60	1800	1	120 240	256	EPA3
					120 208	344	EPA3
					120 240	298	
99	124	60	1800	3	127 220	325	EPA3
					139 240	298	
					240 416	172	
					255 440	162	
					277 480	149	
					110 190	376	
99	124	50	1500	3	120 208	343	EU Stg V
					110 220	325	
					120 240	298	
					220 380	188	
					240 416	172	
					120 208	382	
110	138	60	1800	3	127 220	361	EPA3
					139 240	331	
					120 240	331	
					240 416	191	
					255 440	180	
					277 480	165	

Ratings below 130 kW are not subject to IMO emission regulations.

* Single phase output at 1.0 power factor; three phase output at .8 power factor

See next page for fuel consumption and product dimensions.

80–110 kW

ONAN MARINE GENSET (continued)

FUEL CONSUMPTION

kWe	Hz	1/4 Load L/hr (Gal/hr)	1/2 Load L/hr (Gal/hr)	3/4 Load L/hr (Gal/hr)	Full Load L/hr (Gal/hr)
KC- and HX- cooled ratings					
80	50	TBA	TBA	TBA	TBA
99	60	TBA	TBA	TBA	TBA
99	50	TBA	TBA	TBA	TBA
110	60	TBA	TBA	TBA	TBA

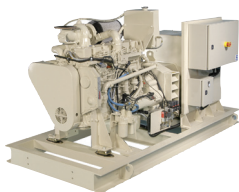
For more information on average fuel consumption and emissions, refer to the Reference Materials section.

PRODUCT DIMENSIONS

		HOUSED		UNHOUSED	
Length	mm (in)	1944	(77)	1944	(77)
Width	mm (in)	904	(36)	819	(32)
Height	mm (in)	1036	(41)	975	(38)
Weight	kg (lb)	1337	(2947)	TBA	(TBA)

Dimensions may vary based on selected engine configuration.

6B-CP C POWER MARINE GENSET



GENERAL SPECIFICATIONS

Engine Model	6BT5.9-D(M)
Alternator	STAMFORD UCM274E

PRIME POWER RATINGS

				FUEL CONSUMPTION		EMISSIONS		
kWe	kVa	Hz	Voltage	Rated L/hr (Gal/hr)	ISO Avg L/hr (Gal/hr)	IMO	EPA	EU
KC- and HX-cooled ratings								
80	100	50	380	22.4 (5.9)	11.3 (3.0)	—	—	—
			400					
			415					
99	124	60	416	27.1 (7.2)	14.0 (3.7)	—	—	—
			440					
			460					
			480					
RAD-cooled emergency ratings								
74	93	50	380	22.4 (5.9)	11.3 (3.0)	—	—	—
			400					
			415					
92	115	60	416	27.1 (7.2)	14.0 (3.7)	—	—	—
			440					
			460					
			480					

Ratings below 130 kW are not subject to IMO emission regulations.

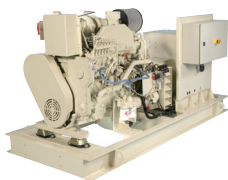
For more information on average fuel consumption and emissions, refer to the Reference Materials section.

PRODUCT DIMENSIONS

		KC AND HX CONFIGURATIONS		RAD CONFIGURATION	
Length	mm (in)	2440	(88)	2320	(91)
Width	mm (in)	1250	(49)	1250	(49)
Height	mm (in)	1270	(50)	1280	(50)
Weight	kg (lb)	1270	(2800)	1370	(3020)

Dimensions may vary based on selected engine configuration.

6C-CP C POWER MARINE GENSET



GENERAL SPECIFICATIONS

Engine Model	6CTA8.3-D(M)
Alternator	STAMFORD UCM274H

PRIME POWER RATINGS

				FUEL CONSUMPTION		EMISSIONS		
kWe	kVa	Hz	Voltage	Rated L/hr (Gal/hr)	ISO Avg L/hr (Gal/hr)	IMO	EPA	EU
KC- and HX-cooled ratings								
136	170	50	380	41.3 (10.9)	11.3 (3.0)	—	—	—
			400					
160	200	60	415	46.6 (12.3)	23.4 (6.2)	2	2	—
			416					
170	213	60	440	46.6 (12.3)	14.0 (3.7)	—	—	—
			460					
			480					
RAD-cooled emergency ratings								
136	170	50	380	41.3 (10.9)	20.5 (5.4)	1	—	—
			400					
152	190	60	416	41.3 (10.9)	23.4 (6.2)	2	—	—
			440					
			460					
			480					

Ratings below 130 kW are not subject to IMO emission regulations.

For more information on average fuel consumption and emissions, refer to the Reference Materials section.

PRODUCT DIMENSIONS

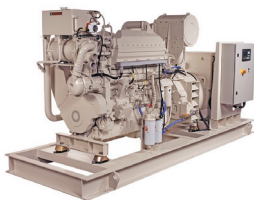
		KC AND HX CONFIGURATIONS		RAD CONFIGURATION	
Length	mm (in)	2400	(94)	2550	(100)
Width	mm (in)	1250	(49)	1250	(49)
Height	mm (in)	1270	(50)	1480	(58)
Weight	kg (lb)	1720	(3792)	1850	(4079)

Dimensions may vary based on selected engine configuration.

K19-CP

C POWER

MARINE GENSET



GENERAL SPECIFICATIONS

Engine Model	KTA19-D(M1)
Alternator	STAMFORD HCM534E

PRIME POWER RATINGS

kWe	kVa	Hz	Voltage	FUEL CONSUMPTION		EMISSIONS		
				Rated L/hr (Gal/hr)	ISO Avg L/hr (Gal/hr)	IMO	EPA	EU
KC- and HX-cooled ratings								
335	419	50	380	91.1 (24.1)	47.1 (12.4)	2	—	—
			400					
			415					
			440					
380	475	50	380	102.6 (27.1)	52.5 (13.9)	2	—	—
			400					
390	488	50	415	102.6 (27.1)	52.5 (13.9)	2	—	—
			440					
			416					
400	500	60	440	106.4 (28.1)	58.8 (15.5)	2	—	—
			460					
			480					
			416					
450	563	60	416	120.8 (31.9)	64.7 (17.1)	2	—	—
460	575	60	440	120.8 (31.9)	64.7 (17.1)	2	—	—
			460					
			480					

Ratings below 130 kW are not subject to IMO emission regulations.

For more information on average fuel consumption and emissions, refer to the Reference Materials section.

PRODUCT DIMENSIONS

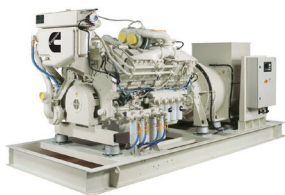
		KC AND HX CONFIGURATIONS	
Length	mm (in)	3500	(137)
Width	mm (in)	1540	(60)
Height	mm (in)	2100	(62)
Weight	kg (lb)	4100	(9039)

Dimensions may vary based on selected engine configuration.

K38-CP

C POWER

MARINE GENSET



GENERAL SPECIFICATIONS

Engine Model	KTA38-D(M1)
Alternator	STAMFORD PM734B

PRIME POWER RATINGS

kWe	kVa	Hz	Voltage	FUEL CONSUMPTION		EMISSIONS		
				Rated L/hr (Gal/hr)	ISO Avg L/hr (Gal/hr)	IMO	EPA	EU
KC- and HX-cooled ratings								
764	955	50	380	206.0 (54.4)	107.5 (28.4)	2	—	—
804	1005	50	400	206.0 (54.4)	113.3 (29.9)	2	—	—
832	1040	50	415	206.0 (54.4)	117.1 (30.9)	2	—	—
845	1056	50	440	206.0 (54.4)	118.4 (31.3)	2	—	—
888	1110	60	416	226.7 (59.9)	129.7 (34.3)	2	—	—
920	1150	60	440	226.7 (59.9)	134.8 (35.6)	2	—	—
			460					
			480					

Ratings below 130 kW are not subject to IMO emission regulations.

For more information on average fuel consumption and emissions, refer to the Reference Materials section.

PRODUCT DIMENSIONS

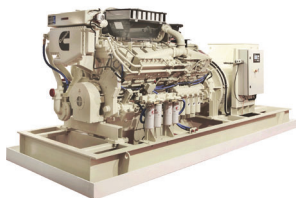
KC AND HX CONFIGURATIONS			
Length	mm (in)	4500	(177)
Width	mm (in)	1900	(74)
Height	mm (in)	2100	(82)
Weight	kg (lb)	8200	(18078)

Dimensions may vary based on selected engine configuration.

K50-CP

C POWER

MARINE GENSET



GENERAL SPECIFICATIONS

Engine Model	KTA50-D(M1)
Alternator	STAMFORD PM734E

PRIME POWER RATINGS

				FUEL CONSUMPTION		EMISSIONS		
kWe	kVa	Hz	Voltage	Rated L/hr (Gal/hr)	ISO Avg L/hr (Gal/hr)	IMO	EPA	EU
KC- and HX-cooled ratings								
1004	1255	50	380	224.5 (64.6)	141.9 (37.5)	2	—	—
1050	1255	50	400	224.5 (64.6)	141.9 (37.5)	2	—	—
			415					
1184	1480	60	416	290.7 (76.8)	169.6 (44.8)	2	—	—
			440					
1230	1538	60	460	290.7 (76.8)	290.7 (76.8)	2	—	—
			480					

Ratings below 130 kW are not subject to IMO emission regulations.
For more information on average fuel consumption and emissions, refer to the Reference Materials section.

PRODUCT DIMENSIONS

		KC AND HX CONFIGURATIONS	
Length	mm (in)	5150	(203)
Width	mm (in)	1900	(75)
Height	mm (in)	2100	(83)
Weight	kg (lb)	9700	(21384)

Dimensions may vary based on selected engine configuration.

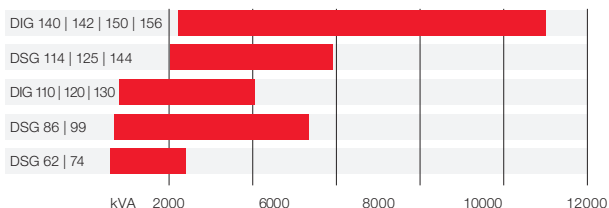


MARINE ALTERNATORS

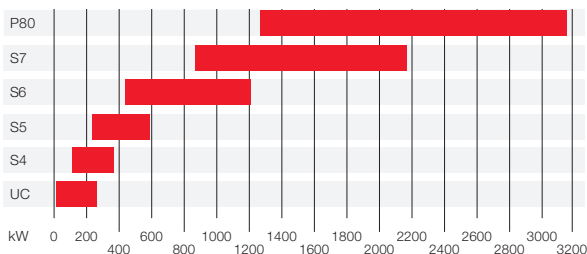
Cummins Generator Technologies manufactures the world's broadest range of alternators from 15 to 8,000 kW under the STAMFORD® and AvK® product brands. Internationally renowned for built-in quality, our alternators set the standard for ruggedness, reliability and versatility.



AvK®



STAMFORD®



STAMFORD

- » 4-6 pole / 1,000-1800 rpm
- » Power range: 20-4,150 kVA / 15-3,320 kW
- » Voltage range: 220-690V at 50 & 60 Hz

AvK

- » 4-10 pole / 600-1,800 rpm
- » Power range: 520-8,000 kW
- » Voltage range: 380-13,800V at 50 & 60 Hz

STAMFORD and AvK alternators are in operation worldwide across a diverse range of application environments:

- » Diesel electric propulsion systems for a variety of vessel and rig types
- » PTO shaft generators for economical electrical power generation
- » PTO/PTI shaft generator operating as auxiliary propulsion drive system
- » Self-starting Power Take Home (PTH) shaft generators for redundant propulsion
- » Auxiliary and onboard power supply
- » Compliant to fixed Water Based Local Application Fire Fighting Systems (FWBLAFFS)

STAMFORD®

Compact in design, STAMFORD® alternators are easy to install and maintain for marine applications. A range of single and three phase voltages are available from either 6 or 12 wire reconnectable winding.

2/3 pitch main stator and damper windings make STAMFORD alternators suitable for parallel operation when equipped with suitable voltage regulator, quadrature droop kit and PFC.

Most generator models are fit with a Permanent Magnet Generator (PMG) to power the excitation system.

PROTECTION AND INSULATION

All marine alternators for LV and MV [P80] conform to Class H thermal insulation requirements. Open drip-proof enclosure protection according to IP23 is standard. Optional air inlet/outlet filters as well as higher IP protection modes can be supplied for certain models upon request.

AUTOMATIC VOLTAGE REGULATORS

AVRs are designed and built to achieve maximum performance from STAMFORD alternators. All AVRs are encapsulated to provide protection against moisture and salt in the atmosphere.

OPTIONS

A range of accessory options are available to meet application requirements, including, but not limited to:

- » Winding and bearing RTDs
- » Anti-condensation heater
- » Quadrature droop kit
- » PFC



AvK® marine alternators are made of a rigid and robust steel construction with form wound stator coils and flat copper rotor windings that can withstand high levels of vibration and load variation.

PROTECTION AND COOLING

Standard AvK design is open drip-proof in accordance with IP23 SOLAS requirements. Air inlet/outlet filters and higher protection up to IP55 can be supplied. A wide range of cooling systems allows an optimum choice for operating and environmental conditions. Options include top-mounted air-to-air (IC611 + IC616) or air-to-water (IC81W) heat exchangers.



BEARINGS

AvK alternators are equipped with either anti-friction or sleeve bearings subject to load, speed and application. Sleeve bearings are split type, to permit easy access for maintenance. Subject to frame size, speed and inclination they may be self-lubricated or force lubricated.

EXCITATION SYSTEM

Our alternators are equipped with brushless excitation; the auxiliary winding supplies the automatic voltage regulator (AVR) with sufficient power to ensure short-circuit levels of > 3x rated current. Subject to frame size and bearing arrangement, PMG is also available.

AUTOMATIC VOLTAGE REGULATOR

A range of digital Automatic Voltage Regulators (AVR) are available to meet varying application requirements. Typical AVR features include:

- » Voltage regulation in island mode (+/-0.5 percent)
- » Reactive load sharing by static droop or cross-current compensation
- » U/f characteristic for applications with floating frequency
- » Under/over-excitation voltage protection
- » Excitation fault monitoring
- » Fast PID response for high-class regulation characteristic.

INSULATION

All windings are bar-wound type and conform to either Class F or Class H thermal insulation. Increased machine life and reliability is ensured through AvK's advanced insulation system: Resin Rich and Vacuum Pressure Impregnation (VPI) ensures excellent dielectric properties, enhanced dimensional and mechanical stability as well as superior resistance against chemicals and/or moisture.

ALTERNATOR PROTECTION

All AvK alternators are fully assembled with bearing and stator winding temperature detectors (RTDs), which can be used for protection against thermal overload.



PREMIUM OPTIONS

Cummins offers a variety of premium options to help vessel owners and operators manage their cost of operation, reduce maintenance and tailor the engine for a specific application.



Tor Tugboats: Two Cummins QSK95 diesel marine engines provide reliable propulsion power

PREVENTECH MARINE

PrevenTech monitors assets remotely and helps avoid unplanned downtime through advanced detection, reporting and diagnosis of potential engine health issues through the application of connectivity, big data, advanced analytics and IoT, together with live expert support and customized recommendations. PrevenTech Marine is fit for recreational and commercial Cummins powered vessels.

Safety and planning – Remote monitoring of basic vessel functions provides insights into the real-time health of the vessel, enabling informed decision-making using ranked and timely alerts with recommended actions.

Enhances engine performance and reliability - Provides preemptive guidance to aid in the mitigation of equipment failures and progressive engine damage. FleetguardFIT™ integration extends PrevenTech's health monitoring capabilities to the filtration components, reducing reliance on standardized maintenance schedules and minimizing unnecessary costs.

Maximizes efficiency of service events - Suggests root causes of fault alerts and defines if fault is primary or related. Visibility of the problem allows technicians to arrive with the right parts and plan which saves time.



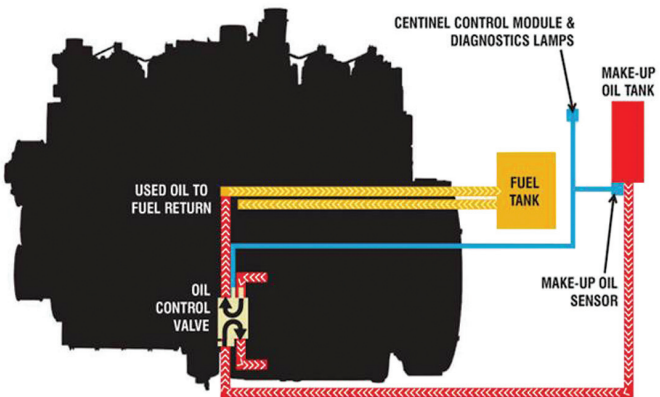
CENTINEL™

Available as an aftermarket kit for K Series engines or installed as a factory option on MCRS engines, CENTINEL eliminates or extends oil change intervals by burning used oil and replacing it with clean oil.

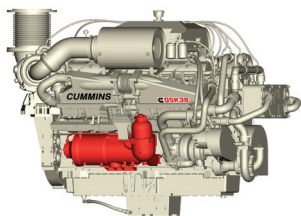
The CENTINEL Advanced Engine Oil Management System automates oil changes. While the equipment is running, CENTINEL monitors the engine's duty cycle. At precise intervals, it bleeds off a small amount of used oil and sends it to the fuel tank, where it blends with diesel fuel and is burned during combustion.

CENTINEL allows equipment to work up to 4,000 hours between service events. Depending on the duty cycle, that could eliminate 15–20 oil changes from current maintenance schedules.

- » Reduces downtime and the cost of oil change service
- » Reduces the risk of engine damage due to poor oil change maintenance practice



ELIMINATOR™



Available on the KTA38, KTA50, and all QSK MCRS engines, ELIMINATOR is a combination full-flow and centrifugal system that incorporates a permanent stainless steel core that eliminates the need for disposable oil filters.

ELIMINATOR consists of a two-stage filter media system. The first filter screens for particles as small as 20 microns, while a centrifugal separator constantly spins, depositing the heaviest particles on a replaceable liner.

Because ELIMINATOR uses the oil pressure in the lubricating system to spin the centrifugal separator, there is no additional load on the engine, with no drain on power or fuel economy. This option lowers the cost of operation by:

- » Eliminating the recurring cost and maintenance of spin-on filters
- » Reducing downtime for filter changes
- » Eliminating disposal cost of used filter elements
- » Improving filtration and reducing component wear which can extend overhaul periods
- » Extending oil change intervals when used concurrently with oil sampling and CENTINEL

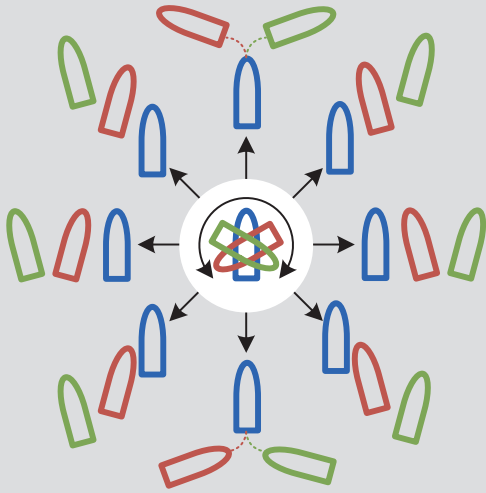
ELIMINATOR satisfies most Marine Classification Society requirements for duplex filters.




DOCKCOMMAND

Cummins DockCommand is the next generation of joystick-controlled docking systems for boaters who want smooth, stress-free docking. Suitable for both single and twin-engine boats, DockCommand agnostically pairs its engine and joystick with proportional and non-proportional thrusters. Pair DockCommand with any of the Cummins Engines line from 4.5 – 15 L for enhanced performance and reactive steering without compromise.

- Easily paired with single or multiple proportional and non-proportional thrusters
- Dependable and simple joystick control
- Seamless integration for repowers and new builds
- Backed by Cummins' service network and warranty
- Compatible with all Cummins engines recreational ratings
- Multiple station capability
- Compatible with single or twin inboards





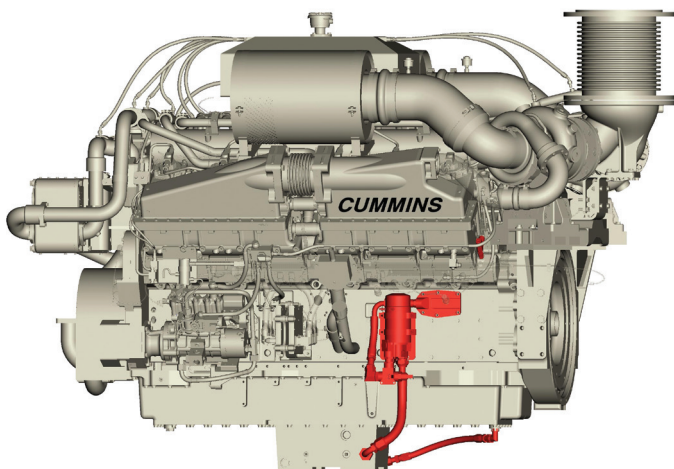
-  No Twist
-  CCW / Port Twist
-  CW / Stbd Twist



PRE-LUBE WITH QUICK EVAC

Available on QSK38 and QSK50 engines, Pre-Lube with Quick Evac is an engine-mounted pump with off-engine mounted controls. Pre-Lube reduces engine wear by providing lubrication prior to engine start, while Quick Evac reduces oil change time by quickly removing oil from the engine oil pan. This option is available in 24 volt DC only.

- » Empties the oil sump in 60 seconds, allowing operators to consistently complete regular oil changes in 30 minutes or less
- » Enables clean, fast and safe oil changes by pumping used oil directly into a containment barrel to prevent technician contact with lube oil



C COMMAND BASIC

C COMMAND FOR QSK19/38/50/60 ENGINES

The cost-effective basic system offers the flexibility to function with or without an engine room panel and features a variety of display options to ensure engine data is easily accessible.

All connections are centralized in a customer interface box (CIB), which helps simplify vessel installation. The CIB contains all ECM connections, start/stop logic, emergency stop button and OEM connections.

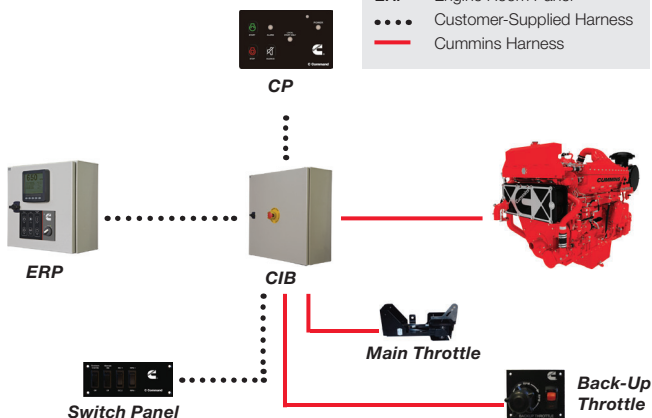


ENGINE ROOM PANEL (ERP) FEATURES

- » Soft buttons control start/stop as well as alarm indication and acknowledgement
- » Enclosed in an IP44 rated box designed for operation in harsh engine room environments

For a list of available remote options and upgrades, see pages 122 and 123.

CIB	Customer Interface Box
CP	Control Panel
ERP	Engine Room Panel
•••	Customer-Supplied Harness
—	Cummins Harness



C COMMAND ELITE

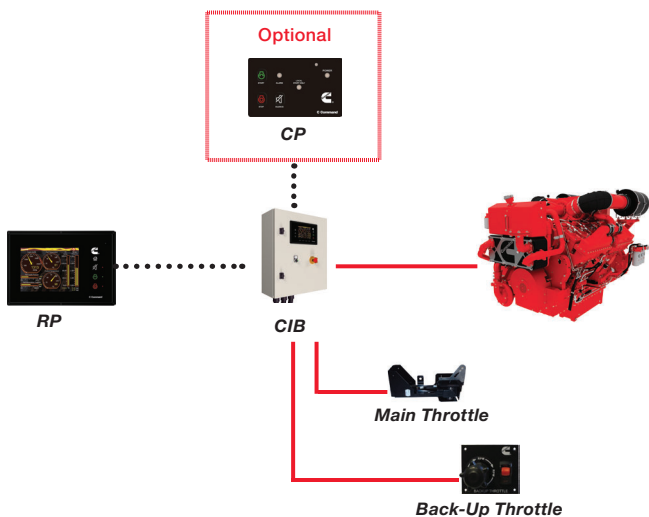
C COMMAND FOR QSK19/38/50/60 ENGINES

C Command Elite offers additional functionality and monitoring over the C Command system with the added benefit of easy-to-read, customer configured, color displays.

CUSTOMER INTERFACE BOX (CIB) FEATURES

- » Includes integral control panel
- » Full color text and graphics in menu format
- » Multiple languages and configurations may be saved to accommodate multinational crews
- » Stores a comprehensive history of alarms and faults for more efficient troubleshooting and service scheduling, easily downloaded via Ethernet connection
- » Capable of supporting customer-supplied temperature, pressure and switch inputs

For a list of available remote options and upgrades, see pages 122 and 123.



C COMMAND ELITE PLUS

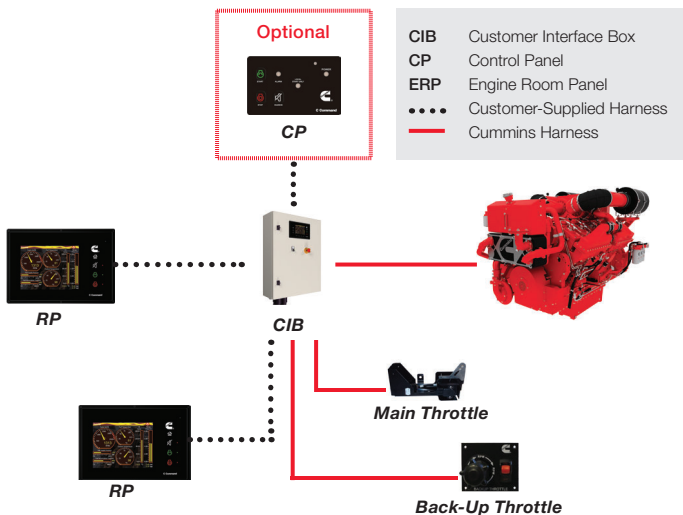
C COMMAND FOR QSK19/38/50/60/95 ENGINES

C Command Elite Plus utilizes the same displays for both main station and remote monitoring as the Elite system, but also includes Classification Society mandated sensors, alarms and shutdowns. The result is a globally supported, fully classed engine and electronic and safety system that protects against the substantial risk of non-compliance. The Elite Plus system is fully approved by ABS, BV, DNV and LR.



Command Elite Plus for the QSK95, in addition to the above functionality, has a larger CIB to accommodate higher power capability and meets additional class requirements for this engine size. There is additional I/O available for vessel integration and customization.

For a list of available remote options and upgrades, see pages 122 and 123.



C COMMAND HD

C COMMAND FOR MID-RANGE & HEAVY DUTY ENGINES

Based on C Command architecture, C Command HD and HD Elite Plus are now available for QSB7 auxiliary and QSM11 propulsion and X15 auxiliary engines. Both systems offer simplified installation and include local and remote control options.



C Command HD, the cost-effective basic system, comes standard with digital displays and includes an engine room panel. Customers also have the choice of up to two remote control panels and two electronic digital displays.



C Command HD Elite Plus, the type-approved system, includes Classification Society mandated sensors, alarms and shutdowns. Easily integrated to vessel networks, this system comes standard with full color displays and optional remote control panels.

For a list of available remote options and upgrades, see pages 122 and 123.

C COMMAND PT

C COMMAND FOR K SERIES ENGINES

Operators can now have all the benefits of modern engine monitoring on mechanical products with Cummins C Command PT panels. Based on C Command architecture, this modular panel system includes a selection of display options designed to enhance K Series engine performance and manage costs.



C Command PT Elite Plus includes Classification Society mandated sensors, alarms and shutdowns. The result is a globally supported, fully classed engine and safety & alarm system that protects against the substantial risk of non-compliance. Certification is available from ABS, BV, DNV, and LR.



Available exclusively with C Command PT Elite Plus, Cummins Fuel Consumption Monitor enables accurate, reliable monitoring within ± 3 percent while providing trip, total and instantaneous measurements on digital remote datalink.

For a list of available remote options and upgrades, see pages 122 and 123.

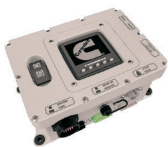
C COMMAND CONNECT

C COMMAND FOR MID-RANGE AND HEAVY DUTY PROPULSION ENGINES

Designed for Cummins B4.5, QSB6.7, QSC8.3, QSL9, QSM11 and X15 marine engines, C Command Connect leverages existing engine capabilities and throttle-shift systems, including third-party systems, making it easy to upfit existing boat designs.



C Command Connect: The cost-effective basic system, includes all harnessing, user interfaces, an optional ED-4 display panel with a 3.5-inch color display, and N2K gateway capability for remote monitoring. The basic system also includes manual start/stop at the helm.



C Command Connect Premier: The premium system provides additional functionality and monitoring over the basic system. It includes a CIB with integrated ED-4 display panel, N2K output and alarm indication to the helm. Vessel sensor capability allows operators to monitor fuel level, gear oil pressure and temperature and rudder angle.

C COMMAND REMOTE OPTIONS



CONTROL PANEL (CP)

The control panel (CP) is a soft button remote interface for engine control featuring start/stop and alarm acknowledgement. It also includes red alarm indication with buzzer and local and remote control indication. It is compatible with:

- » C Command (Basic, Elite and Elite Plus)
- » C Command HD (Basic and Elite Plus)
- » C Command PT Elite Plus



ELECTRONIC DIGITAL DISPLAY* (ED-4)

The ED-4 reads all engine data from the ECM and displays information in text and graphics. It includes full text alarm indication, data trending, internal buzzer and external alarm contact, as well as fault code logging with text description and service tool connection port. The ED-4 is compatible with:

- » C Command Connect
- » C Command Connect Premiere



REMOTE CONTROL PANEL (RP)

This remote digital interface to engine control is an 8.4" configurable touch screen featuring superior visibility even in direct sunlight. The RP can simultaneously monitor and control up to eight engines, can support as many as three remote panels and may be complemented by an ED-4 in areas where only basic monitoring is required. The RP is compatible with:

- » C Command Elite and Elite Plus
- » C Command HD Elite Plus
- » C Command PT Elite Plus

** Not available on the QSK95*

C COMMAND UPGRADES

- » **Switch panel** engages electronic features, including alternate idle, engine protection override and intermediate speed control
- » **Back-up throttle** provides operators with added security in the event of a main throttle failure
- » **Gear oil pressure and temperature** protects marine gear from damage caused by low oil pressure and high oil temperature
- » **Individual cylinder exhaust gas temperature (EGT)** is available on the QSK38, QSK50, QSK60 and QSK95 MCRS engines to detect in-cylinder temperature deviation
- » **Pre-lube** on the QSK38, QSK50, QSK60 and QSK95 helps reduce friction at start-up and engine wear by providing lubrication prior to engine start



Switch panel



Back-up throttle

ALL-IN-ONE FUEL FILTER, FUEL/WATER SEPARATOR

WITH NANONET MEDIA FOR MARINE DIESEL ENGINES

The new Fleetguard FH240 series Sea Pro® stage-1 fuel water/separator is set to REVOLUTIONIZE the marine industry.

FEATURES & BENEFITS

- » **Removes** the need for two separate stages of pre-filtration.
- » **Eliminates** the requirement for mid-life fuel injector replacement with NanoNet® technology.
- » **Extends** service maintenance intervals far beyond current industry standards.
- » **Features** an all-steel, erosion-treated plex'd body.



*Sea Pro®
Single Short*



*Sea Pro®
FH240 Series
Duplex Short*



*Sea Pro®
Single Tall*



*Sea Pro®
FH240 Series
Duplex Tall*

The Fleetguard Sea Pro FH240 Series fuel processors meet all relevant approval certifications and requirements for today's marine diesel engines.

WARRANTY

Every Cummins marine engine is backed by a comprehensive warranty that is valid and consistent worldwide. Major components, including the block, camshaft, crankshaft and connecting rods, are covered for an extended period under the base engine warranty.

PROTECT YOUR INVESTMENT WITH ENCOMPASS

With Encompass, you can extend your coverage period up to six years from engine in-service date depending on your specific engine and rating. This coverage can include parts, labor and travel. You can customize the amount of coverage required for your vessel's application. Onan Marine generator sets are also available with an extended coverage plan which extends your Onan Generator Set's warranty to the coverage duration of 5 years or 3,000 hours, whichever occurs first.

Coverage limitations and responsibilities are accessible at anytime on our website, cummins.com. For more details, please contact your local Cummins professional.



Rating	Engine	Base Warranty
High Output	B4.5, QSB, QSC, QSL, QSM	2 yr / 1000 hrs
Light Duty	B4.5, QSB, QSC, QSL, QSM	2 yr / 1000 hrs
Intermittent Duty	B4.5, QSB, QSC, QSL, QSM	2 yr / 3000 hrs
	19-60 liter engines	1 yr / 3000 hrs
	QSK95	1 yr / Unlimited hrs
Medium Continuous Duty	QSB, QSC, QSL	2 yr / 5000 hrs
	QSM	2 yr / 6000 hrs
	19-60 liter engines	1 yr / 4000 hrs
	QSK95	1 yr / Unlimited hrs
Heavy- Duty	QSB, QSC, QSL	2 yr / 6000 hrs
	QSM, X15	2 yr / 8000 hrs
	19-60 liter engines	1 yr / 6000 hrs
	QSK95	1 yr / Unlimited hrs
Continuous Duty	B4.5, QSB, QSC, QSL	2 yr / Unlimited hrs
	QSM, X15	2 yr / Unlimited hrs
	19-60 liter engines	1 yr / Unlimited hrs
	QSK95	1 yr / Unlimited hrs
Emergency Auxiliary	QSK60	2 yr / 400 hrs
Prime Power	B4.5, QSB QSM,X15	2 yr / Unlimited hrs
	19-60 liter engines	1 yr / Unlimited hrs
	QSK95	1 yr / Unlimited hrs
Onan Marine Generator Sets	All MDKXX and MDDXX	5 yr / 2000 hrs

GENUINE CUMMINS PARTS

Cummins understands how much every hour of downtime can cost you. That's why we always recommend Genuine Cummins new and ReCon® parts, built for your engine's original specifications for reliability, and durability. You aren't just replacing a worn part — you're improving the performance of your engine and your vessel.

GENUINE CUMMINS PARTS

- » Designed to work with your specific engine
- » Promote longer engine life
- » Include the latest upgrades in materials, component design and workmanship
- » Backed by the best warranty in the business

BETTER PARTS. BETTER AVAILABILITY.

Of course, it doesn't matter how good Genuine Cummins quality is if a part isn't close at hand when you need it. That's why Cummins marine distributors maintain a full inventory of parts for all marine engines registered in their territory, including yours. Cummins also operates parts distribution centers in strategic locations around the globe, helping to ensure that your parts arrive as quickly as possible. In critical need situations, we work hard to get the parts you need delivered to you within 24 hours.

When your vessel is offshore in a remote location and the clock is ticking, you don't want to take chances on anything less than the unmatched quality of Genuine Cummins parts.

A BETTER WARRANTY THAT TRAVELS WELL.

Genuine Cummins quality is the reason these parts come with a full factory warranty. Cummins new and ReCon parts warranty is comprehensive, ensuring peace of mind and financial protection. Every part is backed 100 percent for parts, labor, progressive damage and consumables, with no deductible.

Having a great warranty doesn't matter when you've got a problem 500 miles from an authorized repair shop. That's the advantage of buying a Genuine Cummins engine or part. We have a network of over 7,500 authorized parts and service locations worldwide where your warranty will be honored and the work will be completed by professional technicians who are trained and certified by Cummins. For additional warranty information or to find an authorized service location near you, visit quickserve.cummins.com.



REFERENCE MATERIALS

FUEL CONSUMPTION

One of the most commonly asked customer questions is, “How much fuel will that engine use in my boat?” The answer may be derived using any of the following four prediction methods:

- » Advertised fuel consumption at rated power (single point)
- » Average fuel consumption over a standard test cycle
- » Average fuel consumption over a specific duty cycle
- » Surrogate vessel comparison

The Marine Products Guide lists the average fuel consumption at rated power and over standard cycles recommended by the International Standard Organization ISO 8178 E3 standard test cycle for propulsion commercial applications, E5 for recreational applications and D2 for auxiliary applications. It represents the fuel consumption for a typical marine customer, as defined by ISO.

Fuel consumption values from engine control modules and displayed on instrument panels are not absolute. Tolerance varies with speed and load, but is generally less than +/-5 percent when operating within 30 percent of rated power.

Please note: fuel consumption calculations are based on fuel of 35° API gravity at 16°C (60°F) having an LHV of 42,780 KJ/KG (18,390 BTU/lb) when used at 29°C (85°F) and weighing 838.9 g/liter (7.001 lb/US gal) with LTA when available.

If you have any questions, please contact your local Cummins professional.

ISO 8178 C1 STANDARD TEST CYCLE

Mode	% HP	% RPM	Weight Factor
1	100	100	0.15
2	75	100	0.15
3	50	100	0.15
4	10	100	0.1
5	100	Intermediate	0.1
6	75	Intermediate	0.1
7	50	Intermediate	0.1
8	0	Idle	0.15

ISO 8178 D2 STANDARD TEST CYCLE

Mode	% HP	% RPM	Weight Factor
1	100	100	0.20
2	75	91	0.50
3	50	80	0.15
4	25	63	0.15
5	10	100	0.10

*For "constant-speed auxiliary engine" applications.

ISO 8178 E3 STANDARD TEST CYCLE*

Mode	% HP	% RPM	Weight Factor
1	100	100	0.20
2	75	91	0.50
3	50	80	0.15
4	25	63	0.15

* For "propeller-law operated main and propeller-law operated auxiliary engine" applications.

ISO 8178 E5 STANDARD TEST CYCLE

Mode	% HP	% RPM	Weight Factor
1	100	100	0.08
2	75	91	0.13
3	50	80	0.17
4	25	63	0.32
5	0	Idle	0.30

REFERENCE MATERIALS

MARINE EMISSIONS

IMO

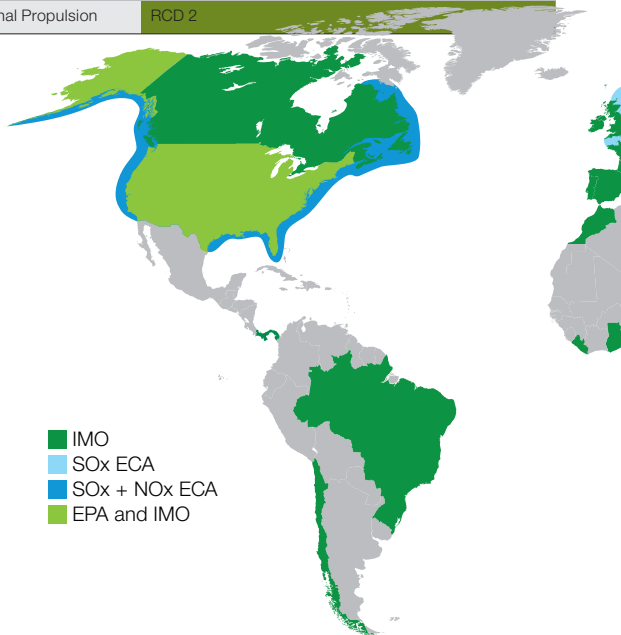
kW	HP	2017	2018	2019	2020	2021	2022
> 130	> 174	Tier II (Tier III within a NOx ECA)					

U.S. EPA

kW	HP	2017	2018	2019	2020	2021	2022
< 600	< 805	Tier 3					
≥ 600	≥ 805	Tier 4					

E.U.

kW	HP	2017	2018	2019	2020	2021	2022
19–299	25–401	Stg IIIa		Stg V			
> 299	> 401	Stg IIIa			Stg V		
Recreational Propulsion		RCD 2					

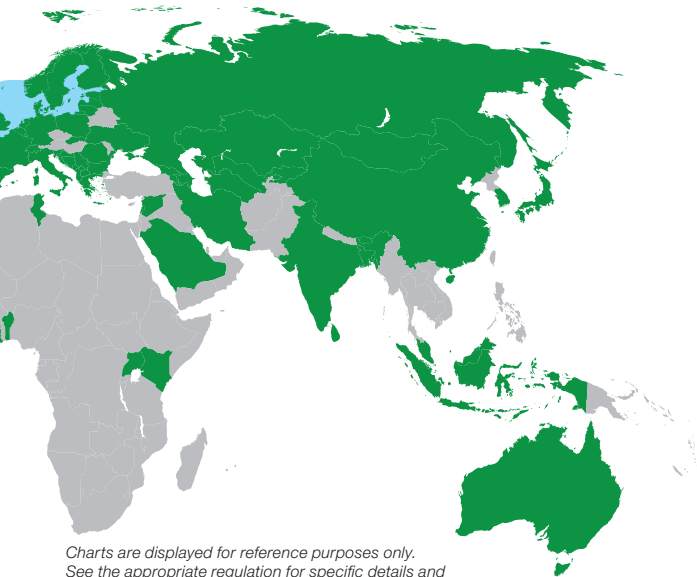


EPA: The United States Environmental Protection Agency (EPA) regulates exhaust emissions from diesel engines installed on U.S. flagged/registered marine vessels.

EU: The Nonroad Mobile Machinery Directive regulates exhaust emissions from diesel engines installed on inland waterway vessels operating in the European Union. The Recreational Craft Directive regulates noise and exhaust emissions from propulsion engines installed on recreational craft operating in the European Union.

IMO: The International Maritime Organization (IMO) regulates exhaust emissions on diesel engines above 130 kW (174 hp). Engines used exclusively in emergency applications are exempt. IMO Tier III applies only when operating within a NOx Emission Control Area. The Tier III regulation is in effect for North America and U.S. Caribbean Sea NOx ECA's for vessels built after January 1, 2016.

Certain ratings may not be available for sale in all areas due to emissions compliance. Other local certifications may be available.



Charts are displayed for reference purposes only. See the appropriate regulation for specific details and options related to emission standards and implementation dates.

REFERENCE MATERIALS

PRODUCT CERTIFICATION: CLASSIFICATION SOCIETY

Cummins understands the importance of classification society certification to the commercial marine industry. Therefore, Cummins obtains type approvals from major marine classification societies worldwide including:



American Bureau of Shipping (ABS)



Bureau Veritas (BV)



China Classification Society (CCS)



Croatian Register of Shipping



DNV



Korean Register of Shipping (KR)



Lloyds Register (LR)



Nippon Kaiji Kyokai (NK)



Polish Register of Shipping



Registro Italiano Navale (RINA)



TÜRK LOYDU

Turk Loydu

To achieve this certification, Cummins designs and builds products that comply with the strictest safety standards. In accordance with marine classification society rules, Cummins offers a full line of options such as independent safety and alarm systems, dual-walled fuel lines and duplex filtration to meet vessel certification requirements.

For more information on emission or marine classification society certification, please contact your local Cummins professional.

SUPPORT RESOURCES

Cummins recognizes that it's not just about investing in engine technology. Equally important is the investment we make in our application and service capability.

Our products are supported by a team of marine-certified distributors offering sales, service and application expertise — visit the Cummins Worldwide Service locator at locator.cummins.com to find your nearest Cummins distributor. Plus, our products are backed by a comprehensive warranty that is consistent and valid at any authorized service outlet worldwide.

Our commitment to support is further evidenced by QuickServe®. This system is dedicated to performing fast, accurate maintenance and repair services using genuine Cummins new and ReCon® parts to minimize downtime and maximize productivity.

QuickServe trucks and marine-trained technicians are fully equipped to respond rapidly, performing the necessary diagnosis and repairs on-site in a timely manner.

SUPPORT TOOLS

Service Locator: locator.cummins.com

For more information on your local Cummins distributor team

QuickServe® Online: quickservice.cummins.com

24/7 access to parts, service and repair information

Customer Assistance Center: Experienced, knowledgeable customer assistance specialists available 24 hours a day

- » Call 1-800-CUMMINS within the U.S.
- » Call 1-812-377-5000 outside the U.S.

NOTES

Cummins Inc., a global power leader, is a corporation of complementary business units that design, manufacture, distribute and service engines and related technologies, including fuel systems, controls, air handling, filtration, emission solutions and electrical power generation systems. Headquartered in Columbus, Indiana (U.S.), Cummins Inc. serves customers in more than 190 countries through its network of 500 company-owned and independent distributor facilities and more than 7,600 dealer locations.

Cummins offers a complete line of propulsion and auxiliary power solutions from 75 to 3132 kW (100–4200 hp) and generator sets from 4 to 1240 kWe, designed specifically for the challenges of commercial, recreational and government marine applications. Our products are supported by a global team of marine-certified distributors, offering sales, service and application expertise. Proven reliability, durability and technology. Every Time.

Learn more about Cummins marine products by visiting our website:

cummins.com/marine



Cummins Inc.
Box 3005
Columbus, IN 47202-3005
U.S.A.

cummins.com

Bulletin 3381946 Produced in U.S.A. Rev. 11/22
©2022 Cummins Inc.