

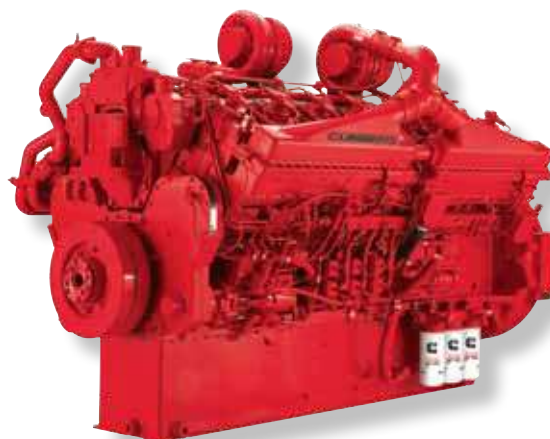


QSK50 MCRS

Marine Propulsion & Auxiliary Engines
IMO Tier II and EU Stg IIIa certified

Specifications

Configuration	V-16 cylinder, 4 stroke diesel
Bore & Stroke	159 mm X 159 mm (6.25 in X 6.25 in)
Displacement	50 L (3068 in ³)
Rotation	Counterclockwise facing flywheel
Aspiration	Turbocharged/Aftercooled
Emissions	IMO Tier II and EU Stage IIIa



Dimensions

Length	3186 mm	125 in
Width	1642 mm	65 in
Height	2108 mm	83 in
Weight	6615 kg	14584 lb

Dimensions and weight may vary based on selected engine configuration

Ratings

Engine Model	Output Power		Engine Speed RPM	Rating Definition	Fuel Consumption	
	kW	HP			Rated Speed L/hr (gal/hr)	ISO* L/hr (gal/hr)
Variable Speed						
QSK50-M	1193	1600	1800	Continuous	313.6 (82.8)	228.2 (60.3)
QSK50-M	1268	1700	1800	Continuous	339.1 (89.6)	238.2 (62.9)
QSK50-M	1342	1800	1800	Heavy Duty	361.5 (95.5)	253.2 (66.9)
QSK50-M	1342	1800	1900	Heavy Duty	363.1 (95.9)	258.0 (68.1)
Fixed Speed						
QSK50-DM	1216	1630	1500 (50 Hz)	Prime	330.5 (87.3)	166.4 (44.0)
QSK50-DM	1343	1800	1800 (60 Hz)	Prime	342.3 (90.4)	184.3 (48.7)

* Average fuel consumption based on ISO 8178 E3 Standard Test Cycle (variable speed models) and ISO 8178 D2 Standard Test Cycle (fixed speed models)

The Right Technology. **Matters.**

QSK50-M/DM MCRS

IMO Tier II and EU Stg IIIa certified

Features and Benefits

Engine Design - Reliable base engine uses common components from the proven K19, K38 and K50 engines. A new cast-iron, ductile single-piece piston with nitride-coated rings and hardened cylinder liner provides excellent durability and long life

Fuel System - Modular Common Rail Fuel System features a simplified design which provides constant high injection pressure regardless of engine speed or load condition. Benefits include low noise and vibration for quiet operation, idle stability and improved low-end torque

Cooling System - Two-pump, two-loop, low temperature aftercooling maximizes efficiency and improves performance. Engine-mounted titanium plate heat exchanger provides superior durability with minimal maintenance requirements

Exhaust System - Triple-wall water-cooled exhaust manifold features an air gap between exhaust gas and jacket water to maintain thermal efficiency while cooling engine surface temperatures. Design is a fabricated single piece construction that eliminates potential exhaust leakage. Single exhaust collector for reduced installation expense

Air System - Water-cooled turbocharger optimized for vessel operating conditions and safety. Mounted or remote marine grade air cleaner with replaceable canister reduces maintenance cost

Lubrication System - Standard capacity 151 L (40 gal) and high capacity 204 L (54 gal) marine grade oil pan. Handed Cummins spin-on oil filters available for easy accessibility and servicing

Electronics - 24-volt Quantum System electronics feature a proven CM850 ECM to monitor operating parameters, while providing diagnostics, prognostics and complete engine protection. Simplified electrical customer interface box for all vessel connections to reduce installation complexity

Certifications - Complies with IMO Tier II and EU Stage IIIa emissions regulations. Designed to meet the International Association of Classification Societies (IACS) and SOLAS requirements. Consult your local Cummins professional for a complete listing of available class approvals

Optional Equipment

- C Command panels
- ELIMINATOR™
- Premium coolant hose connections
- Duplex lube oil and fuel filtration
- SAE A or B (keel cooled only) accessory drives



Cummins Inc.
4500 Leeds Avenue - Suite 301
Charleston, SC 29405-8539
U.S.A.

Internet: marine.cummins.com
Email: wave.master@cummins.com

Bulletin M10063 REV 9/12
©2012 Cummins Inc.