



K19-CP

Marine Generator Sets
IMO Tier II certified

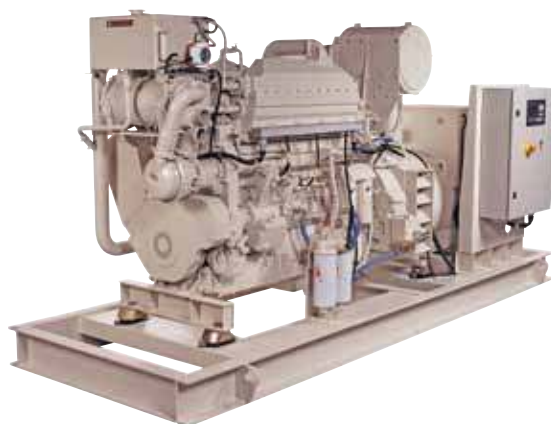
Specifications

Engine Model	Cummins KTA19-D(M1)
Alternator	Newage HCM534E
AVR Type	MX341
Operating Fuel	#2 Diesel, MGO
Agency Approvals	ABS, BV, DNV, GL, LR
Emissions	IMO Tier II

Dimensions

Length	3500 mm	137 in
Width	1540 mm	60 in
Height	2100 mm	82 in
Weight	4100 kg	9039 lb

Dimensions and weight may vary based on selected engine configuration



Ratings

Model	Power* @ RPM	kV-A @ 0.8 pf	Frequency	Voltage	Fuel Consumption	
					Rated Speed L/hr (gal/hr)	ISO** L/hr (gal/hr)
K19-CP	335 kWe @ 1500	419	50 Hz	380, 400, 415, 440	91.1 (24.1)	47.1 (12.4)
K19-CP	380 kWe @ 1500	475	50 Hz	380	102.6 (27.1)	52.5 (13.9)
K19-CP	390 kWe @ 1500	488	50 Hz	400, 415, 440	102.6 (27.1)	52.5 (13.9)
K19-CP	400 kWe @ 1800	500	60 Hz	416, 440, 460, 480	106.4 (28.1)	58.8 (15.5)
K19-CP	450 kWe @ 1800	563	60 Hz	416	120.8 (31.9)	64.7 (17.1)
K19-CP	460 kWe @ 1800	575	60 Hz	440, 460, 480	120.8 (31.9)	64.7 (17.1)

* kWe reflects the approximate amount of power available when used in a keel cooled genset configuration

* Average fuel consumption based on ISO 8178 E3 Standard Test Cycle (variable speed models) and ISO 8178 D2 Standard Test Cycle (fixed speed models)

The Right Technology. **Matters.**

K19-CP

IMO Tier II certified

C Power Design Features

- World-class Cummins diesel engines matched to industry-leading Cummins alternators. Designed, integrated and assembled for optimal efficiency and performance
- Engineered for the tough demands of the marine environment with superior durability and high uptime requirements
- Simplified vessel integration with less complex mechanical connections
- Available with multi-station alarm and monitoring panels via a local digital network to match application requirements
- Integrated alarm system can be configured to communicate with ship's central data systems
- Flexible configurations available to customize the generating set to the vessel's operation requirements
- Comprehensive warranty applies to entire generating set and is valid globally

Engine Features

- Rugged in-line, six cylinder turbocharged diesel engine with mechanical fuel system provides excellent fuel economy and low maintenance requirements. Optional electronic speed governor
- Available in heat exchanger or keel cooled configurations
- Conforms to SOLAS surface temperature requirements and classifiable for Unmanned

Machinery Space (UMS) applications as defined by IACS society rules

- IMO emissions certified by Lloyd's Register; Classification Society type approvals available
- Classed level units fitted with superior aluminum extruded wiring harness, duplex filtration and type-approved hardware

Alternator Features

- 12 wire, 3-phase alternator provides a broad range of re-connectable outputs
- Designed specifically for marine applications with an IP23 rating
- Single bearing close coupled permanent magnet generator provides constant excitation under all conditions
- Standard 2/3 pitch windings avoid excessive neutral currents
- Classifiable for Unmanned Machinery Space (UMS) applications as defined by IACS society rules
- Dynamically balanced rotors with sealed-for-life ball bearings
- Integrated anti-condensation heaters and two sets of RTDs



Cummins Inc.
4500 Leeds Avenue - Suite 301
Charleston, SC 29405-8539
U.S.A.

Internet: marine.cummins.com
Email: wave.master@cummins.com

Bulletin M10070 REV 9/12
©2012 Cummins Inc.