



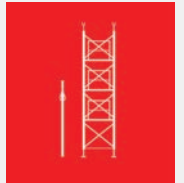
COFFRAGE  
& ÉTAIEMENT  
LOCATION  
VENTE  
MONTAGE



**RENNERONT**  
*L'art de l'étai*

## PROPS

Support for formwork  
of slabs and drying.



# INFORMATIONS

*This document is intended for all persons working with the Altrad Formwork & Shoring product described and contains information on the installation and use of the system in accordance with the guidelines.*

*All persons who work with these various products must be fully familiar with the contents of these documents and their safety information. The use of our products is subject to compliance with the laws and regulations, in their current version, in France. The safety instructions and load specifications must be strictly adhered to. This document can also be used as generally applicable installation and operating instructions or as part of site-specific installation and operating instructions.*

*Altrad Coffrage & Etaisement reserves the right to make changes for the purpose of technical optimisation. Errors, typographical and printing errors excepted.*



Edition 12/2020

**Altrad Coffrage & Etaisement**

**[ace.export@altrad.com](mailto:ace.export@altrad.com)**

**[www.altrad-coffrage.com](http://www.altrad-coffrage.com)**

# SOMMAIRE

## **RIGHT PROPS ..... 5**

**SN** - The standard quality prop dedicated to moderate loads .... 6

**SE** - The quality heavy-duty pro prop ..... 8

**SE C4** - Superior class props with all options ..... 10

**RAS** - The sturdy prop for heavy loads ..... 14

## **PUSH-PULL PROPS ..... 17**

**TPN** - Standard quality push-pull prop ..... 18

**TPE** - The top-quality pro push-pull prop ..... 20

**RAS - TP** - The push-pull prop for heavy loads ..... 22

**TP 1000** - The high-push-pull prop ..... 24

## **STABILIZATION ..... 26**

## **SAFETY & HANDLING ..... 28**

## **CAGES ..... 30**



# RIGHT PROPS

Altrad Coffrage & Etaisement has a wide range of straight shanks for all types of work. From the most robust to the standard, these straight props have various load recoveries. The range was Altrad promotes quality.



# RANGE SN

THE STANDARD **QUALITY PROP** DEDICATED TO MODERATE LOADS

- **Outer tube** : Ø 57 x 2 mm
- **Inner tube** : Ø 48,3 x 2mm
- **Adjustment device** : zinc-plated GS cast-iron nut
- **Unloosable steel** : Ø 14 mm zinguée en acier S 355
- **Plates** : 110 x 110 x 6 mm

## STANDARD EQUIPMENT & FINISHES ON PRODUCT IN STOCK

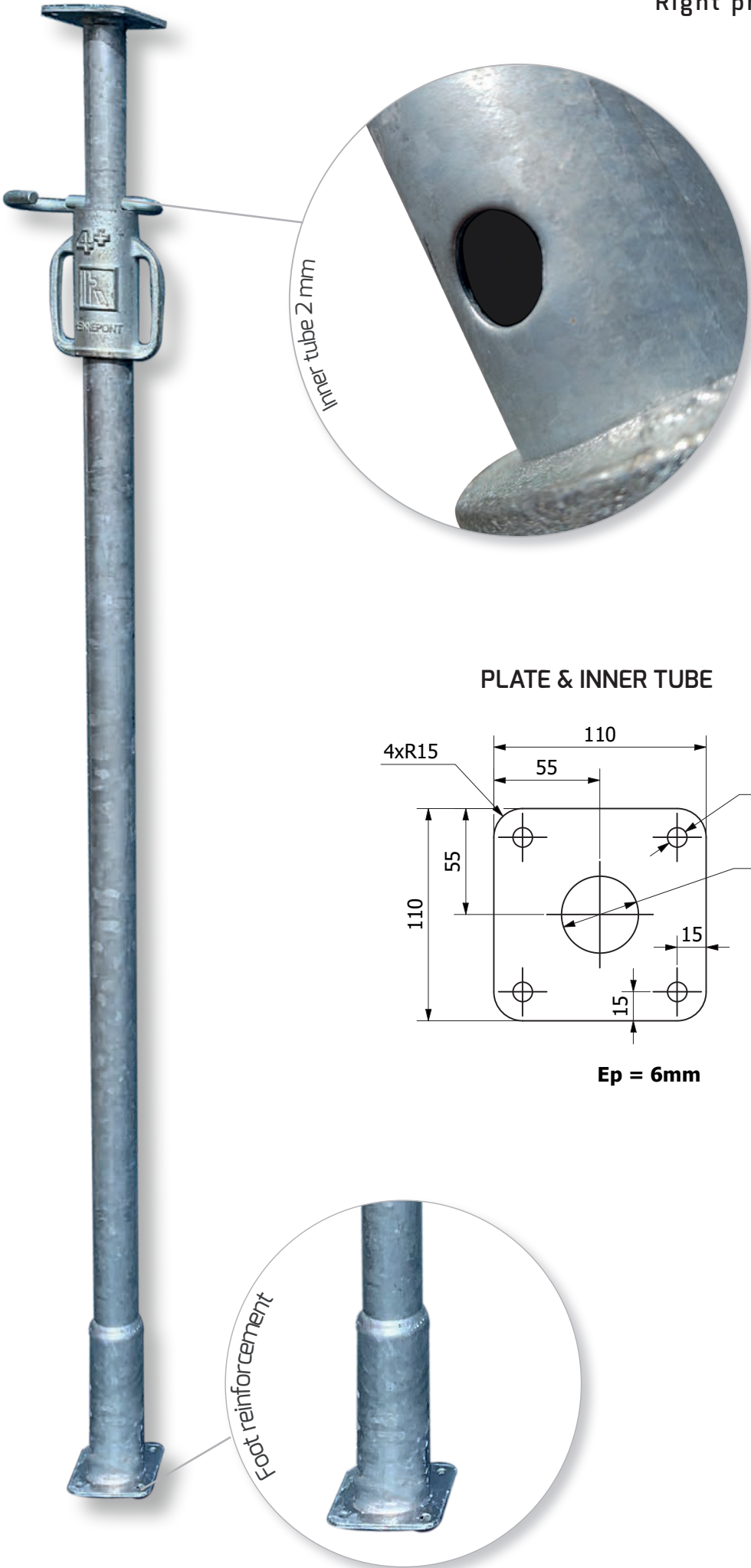
- Reinforced foot
- Zinc plated GS cast iron nut 4+
- Hand guard from SN300
- Hot dip galvanizing

## OPTIONS

- Nut color on request
- Permanent anti-disengagement of the inner tube
- End of travel stop clip on nut (patented)
- Load distribution washer
- Marking on outer tube
- Anti finger pinch

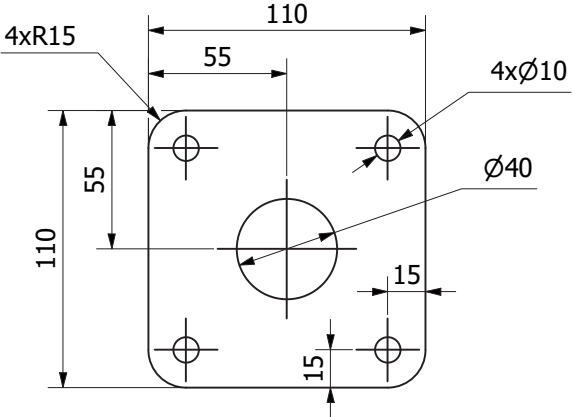
## PERMISSIBLE LOADS IN TONNES (*coefficient 1.65 centered load*)

Strut	Ref	Designation	Height (mm)	Weight (kg)	550	800	1000	1200	1400	1500	1750				
	111-0080A	SN 80	550/800	5,8	1,90	1,80									
	111-0120A	SN 120	800/1200	7,7		1,90	1,80	1,70							
	111-0175A	SN 175	1000/1750	8,8			1,90	1,80	1,80	1,70	1,60				
Standard	Ref	Designation	Height (mm)	Weight (kg)	1550	1700	2000	2200	2600	3000	3200	3500			
	111-1250A	SN 260	1550/2600	10	1,90	1,80	1,70	1,60	1,50						
	111-1300A	SN 300	1700/3000	11,2		1,90	1,80	1,70	1,60	1,40					
	111-1340A	SN 350	2000/3500	13,2			1,90	1,80	1,70	1,50	1,40	1,00			
High height	Ref	Designation	Height (mm)	Weight (kg)	2200	2750	3000	3200	3500	3800	4000	4200	4500	4800	5000
	111-1400A	SN 400	2200/4000	14	1,80	1,80	1,60	1,50	1,10	0,90	0,80				
	111-1450A	SN 450	2750/4500	17			1,50	1,10	1,00	0,90	0,90	0,80	0,70		
	111-1500A	SN 500	3000/5000	19				1,50	1,30	1,10	1,00	0,90	0,80	0,70	0,60



Inner tube 2 mm

PLATE & INNER TUBE



Ep = 6mm

Foot reinforcement

# RANGE SE

## THE QUALITY HEAVY-DUTY PRO PROP

- **Outer tube** : Ø 57 x 2,7 mm
- **Inner tube** :  
 Ø 48,3 x 2,9 mm up to SE 300  
 Ø 48,3 x 3,2 mm from SE 350  
 Ø 48,3 x 4 mm for SE 600
- **Plates** : 110 x 110 x 8 mm
- **Adjustment device** : zinc-plated G5 cast-iron nut
- **Unloosable steel** : Ø 14 mm zinguée en acier S 355

### STANDARD EQUIPMENT & FINISHES ON PRODUCT IN STOCK

- Reinforced foot
- Reinforced plates
- Zinc plated G5 cast iron nut 4+
- Permanent anti-dislocation of the slide
- End stopper for the nut (patented)
- Hot dip galvanizing
- Hand guard from SE 300
- Anti-finger-trap system to SE400

### OPTIONS

- Nut color on request
- Permanent anti-disengagement of the inner tube
- Load distribution washer
- Marking on outer tube

### PERMISSIBLE LOADS IN TONNES (*coefficient 1.65 centered load*)

Strut	Ref	Designation	Height (mm)	Weight (kg)	550	800	1000	1200	1400	1500	1700
	111-0080D	SE 80	550/800	7,5	3,90	3,50					
111-0120D	SE 120	800/1200	9,0	3,90	3,60	3,30					
111-0175D	SE 175	1000/1750	10,7		3,90	3,60	3,30	3,10	2,90		

Standard	Ref	Designation	Height (mm)	Weight (kg)	1550	1700	2000	2200	2600	3000	3200	3500
	111-1260D	SE 260	1550/2600	13,9	3,90	3,50	3,30	3,00	2,50			
111-1300D	SE 300	1700/3000	15,0	3,90	3,70	3,50	2,90	2,30				
111-1350D	SE 350	2000/3500	17,3		3,90	3,60	3,00	2,50	2,10	2,00		

High height	Ref	Designation	Height (mm)	Weight (kg)	2200	2600	3000	3200	3500	3800	4000	4200	4500	4800	5000	5500	6000
	111-1400D	SE 400	2200/4000	18,4	3,50	3,50	3,00	2,70	2,20	1,80	1,50						
111-1450C	SE 450	2750/4500	22			3,50	3,10	2,60	2,10	1,70	1,40	1,20					
111-1500D	SE 500	3000/5000	23,9			3,50	3,30	3,00	2,40	1,90	1,50	1,30	1,00	0,80			
111-1550D	SE 550	3100/5550	24,5				3,50	3,20	3,00	2,40	1,90	1,50	1,30	1,10	0,70		
111-1600D	SE 600	3500/6000	26,2					3,50	3,20	2,70	2,10	1,80	1,50	1,30	0,90	0,60	



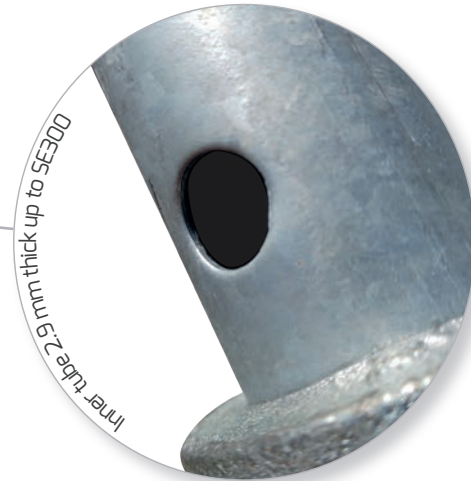
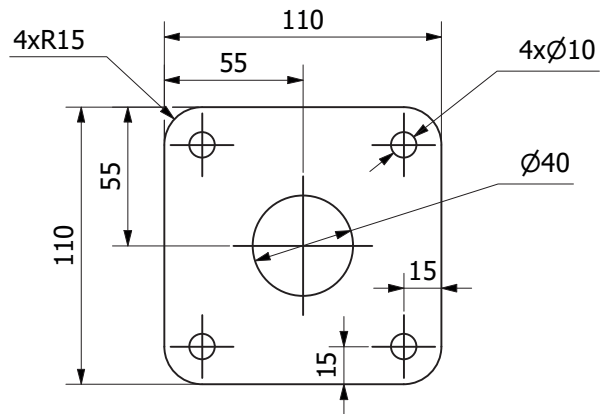
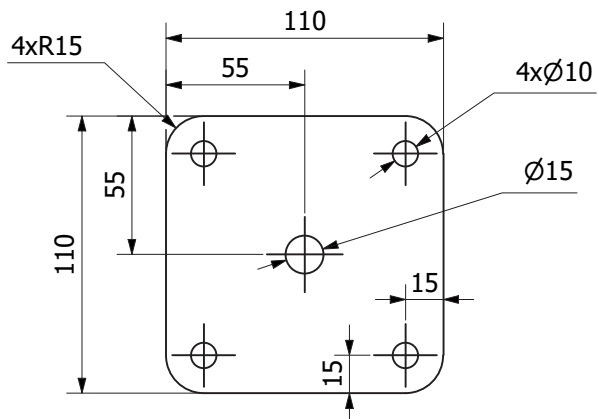


PLATE & INNER TUBE FROM SE450



**Ep = 8mm**

PLATE & INNER TUBE FROM SE400



**Ep = 8mm**

# RANGE SE C4

## SUPERIOR CLASS PROPS WITH ALL OPTIONS

- Outer tube : Ø57 x 2,7 mm
- Inner tube : Ø 48,3 x 4 mm
- Plates : 120 x 120 x 8 mm
- Unloosable steel pin S 355 : Ø14 mm zinc-plated

### STANDARD EQUIPMENT & FINISHES ON PRODUCT IN STOCK

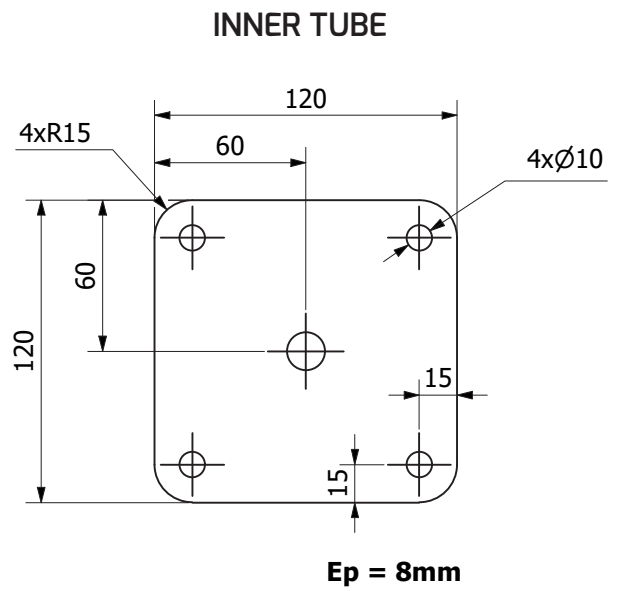
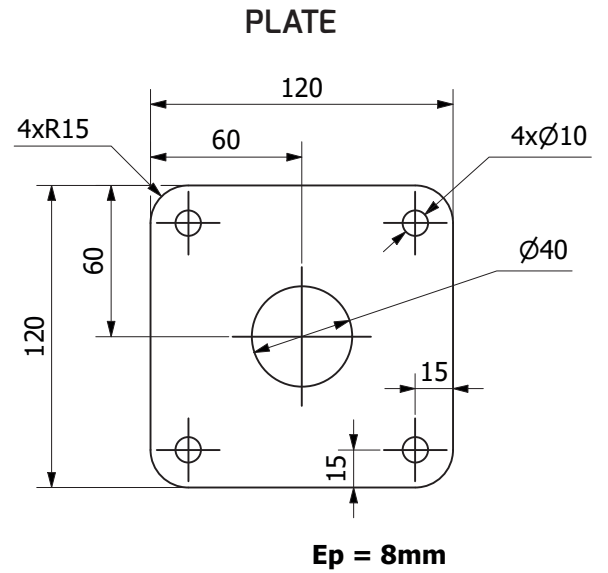
- Reinforced foot
- Anti-hand-trap system
- Reinforced plates
- Anti-finger-trap system
- Hand guard
- Painted, reinforced, cast-iron nut with integrated position control light
- End stopper for the nut (patented)
- Reinforced inner tube (4mm)
- Hot dip galvanizing
- Colored nuts according to dimensions blue (SE300C4), green (SE360C4), red (SE400C4)

### OPTIONS

- Nut color on request
- Marking on outer tube

### PERMISSIBLE LOADS IN TONNES (*coefficient 1.65 centered load*)

Ref	Designation	Height (mm)	Weight (kg)	1700	2000	2200	2600	3000						
138-1300A	SE 300 C4 (bleu)	1700/3000	18,5	4,60	4,40	4,20	3,40	3,20						
Ref	Designation	Height (mm)	Weight (kg)	2100	2300	2500	2700	3000	3600					
138-1360A	SE 360 C4 (rouge)	2100/3600	21,5	4,70	4,00	3,60	3,50	3,40	3,00					
Ref	Designation	Height (mm)	Weight (kg)	2200	2300	2500	2600	3000	3200	3500	3600	3800	4000	
138-1400A	SE 400 C4 (vert)	2200/4000	21,7	4,70	4,20	3,90	3,80	3,60	3,30	3,20	3,00	2,50	2,10	



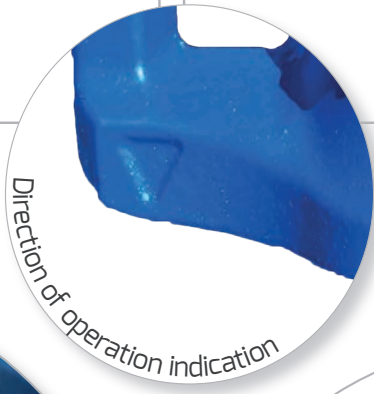
SE 300 C4

SE 360 C4

SE 400 C4



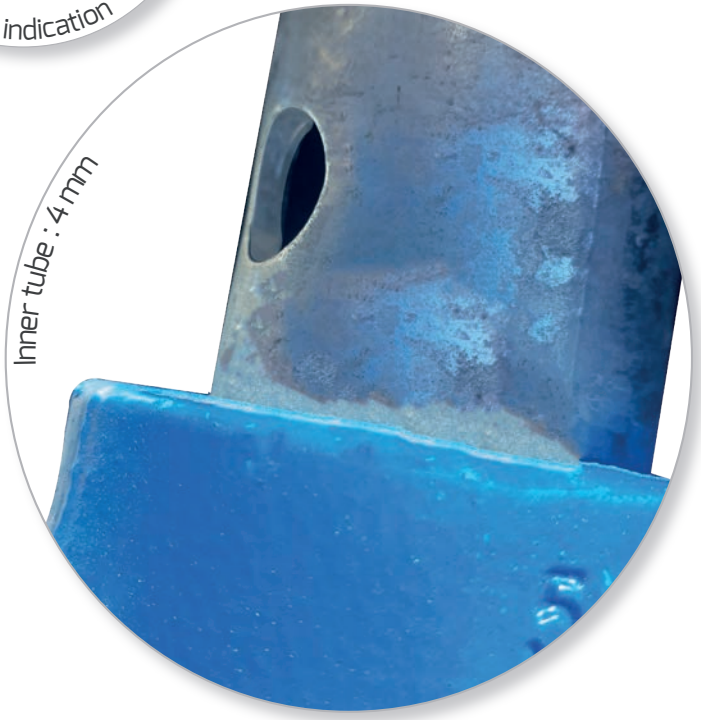
Control light & visualization of positioning thread



Direction of operation indication



End stopper for the nut



Inner tube : 4 mm



# RANGE RAS

## THE STURDY PROP FOR HEAVY LOADS

- Outer tube : Ø 76,1 x 2,7 mm
- Inner tube : Ø 60,3 x 3,6 mm
- Plates : 140 x 140 x 8 mm
- Unloosable steel pin S 355 : Ø16 mm zinc-plated

### STANDARD EQUIPMENT & FINISHES ON PRODUCT IN STOCK

- Bichromate-plated cast-iron nut Ø 76 mm with adjusting handle Ø 18 mm
- Open thread
- Permanent anti-dislocation of the slide
- Hot dip galvanizing
- Hand guard

### OPTIONS

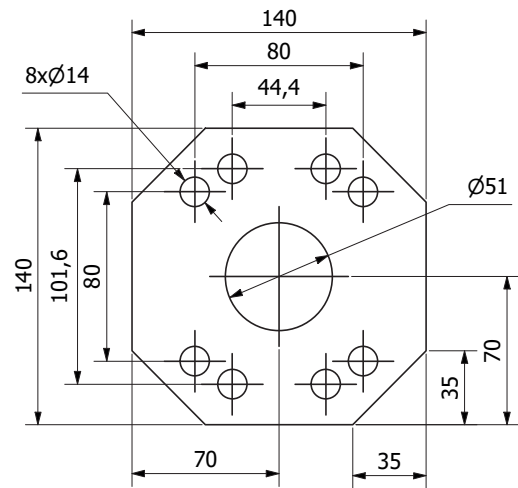
- Nut color on request
- Marking on outer tube
- Reinforced foot
- Anti-finger-trap system

### PERMISSIBLE LOADS IN TONNES (*coefficient 1.65 centered load*)

	Ref	Designation	Height (mm)	Weight (kg)	1900	2000	2600	2800	3000	3200	3550		
Strut	111-2305A	RAS 305	1900/3050	21,0	4,00	4,00	4,00	3,60	3,40				
	111-2355A	RAS 355	2050/3550	23,5		4,00	4,00	4,00	3,80	3,60	3,40		
Standard	Ref	Designation	Height (mm)	Weight (kg)	2350	2550	2950	3500	4000	4500	5000	5500	
	111-2405A	RAS 405	2350/4050	26,0	4,00	4,00	4,00	4,00	3,00				
	111-2455A	RAS 455	2550/4550	28,5		4,00	4,00	4,00	3,10	2,80			
	111-2505A	RAS 505	2950/5000	31,0			4,00	4,00	3,20	2,90	2,30		
Height	Ref	Designation	Height (mm)	Weight (kg)	3100	3550	4000	4500	5000	5500	6000	6500	7000
	111-2555A	RAS 555	3050/5500	34,0	4,00	4,00	4,00	3,10	2,60	1,80			
	111-2605A	RAS 605	3550/6050	37,0		4,00	4,00	4,00	3,00	2,00	1,60		

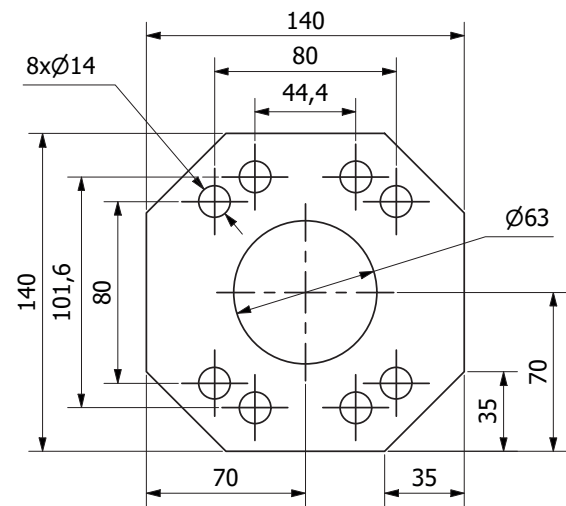


PLATE



Ep = 8mm

OUTER TUBE



Ep = 8mm





# PUSH-PULL PROPS

Altrad Coffrage & Etaisement offers quality push-pull props that are robust to all tests. These props offer strong load recovery and stabilize the formwork, formwork, prefabricated walls, etc.



# RANGE TPN

## STANDARD QUALITY PUSH-PULL PROP

- Outer tube : Ø 57 x 2 mm
- Inner tube : Ø 48,3 x 2 mm
- Adjustment device with locking ring : zinc-plated GS cast-iron nut
- Unloosable steel pin S 355 : Ø 14 mm zinc-plated
- Articulated endplates : Length 115 mm thickness 5 mm attachment using, HM16 x 90 bolts + HM16 nut in Ø 17 mm hole

### STANDARD EQUIPMENT & FINISHES ON PRODUCT IN STOCK

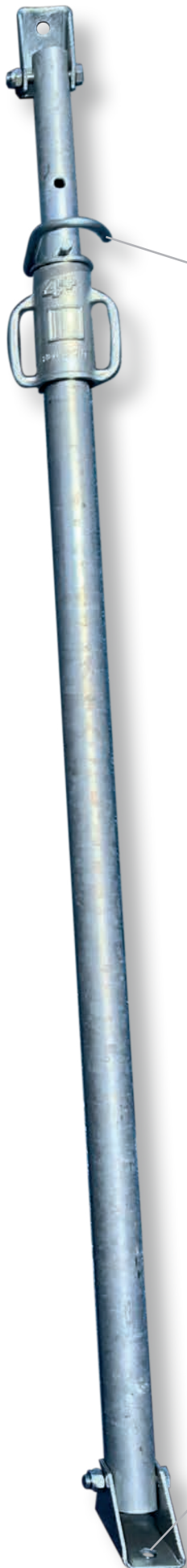
- Rotating ring sleeve
- End stopper for the nut
- Permanent anti-dislocation of the slide
- Anti-hand-trap system (from TPN 300)
- Hot dip galvanizing

### OPTIONS

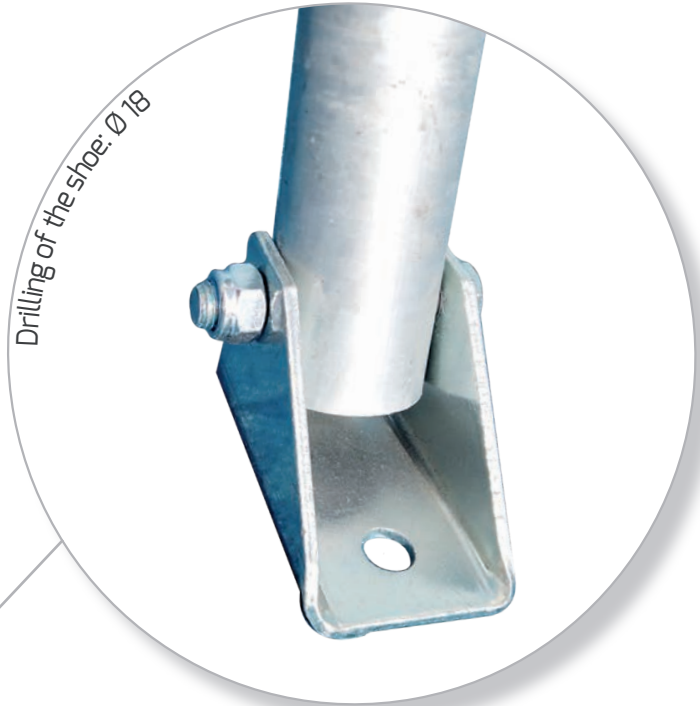
- Nut color on request
- Spindle holding system in place system pin
- Custom made end-plates available on request
- Endplates removable (pin)

### PERMISSIBLE LOADS IN TONNES (*coefficient 3 centered load*)

Strut	Ref	Designation	Height (mm)	Weight (kg)	550	800	1000	1200	1400	1500	1700				
	112-0080A	TPN 80	550/800	6,1	0,90	0,90									
	112-0120A	TPN 120	800/1200	7,1		0,90	0,90	0,80							
	112-0170A	TPN 175	1000/1700	8,3			0,90	0,90	0,90	0,80	0,80				
Standard	Ref	Designation	Height (mm)	Weight (kg)	1550	1700	2000	2200	2600	3000	3200	3500			
	112-1260A	TPN 260	1550/2600	10,5	0,90	0,90	0,80	0,80	0,70						
	112-1290A	TPN 300	1700/3000	11,5		0,90	0,90	0,80	0,80	0,70					
	112-1310A	TPN 350	2000/ 3450	12,7			0,90	0,80	0,80	0,70	0,70	0,50			
High height	Ref	Designation	Height (mm)	Weight (kg)	2500	2600	3000	3200	3500	3800	4000	4200	4500	4800	5000
	112-1400A	TPN 400	2200/3950	13,9	0,90	0,90	0,80	0,70	0,50	0,40	0,40				
	112-1450A	TPN 450	2700/4500	15,5			0,70	0,40	0,50	0,40	0,40	0,40	0,30		
	112-1500A	TPN 500	3000/5000	16,8				0,70	0,60	0,50	0,50	0,40	0,40	0,30	0,30



Unloosable steel pin Ø 14 mm zinc-plated



Drilling of the shoe: Ø 18

# GAMME TPE

## THE TOP-QUALITY PRO PUSH-PULL PROP

- **Outer tube** : Ø 57 x 2 mm
- **Inner tube** :  
 Ø 48.3 x 2,9 mm jusqu'au TPE 300  
 Ø 48.3 x 3,2 mm jusqu'au TPE 350  
 Ø 48.3 x 4 mm jusqu'au TPE 600
- **Zinc-plated GS cast-iron nut**
- **Unloosable steel pin S 355** : Ø 14 mm zinc-plated
- **Articulated endplates** : Length 115 mm thickness 5 mm attachment using, HM16 x 90 bolts + HM16 nut in Ø 17 mm hole

### STANDARD EQUIPMENT & FINISHES ON PRODUCT IN STOCK

- Rotating ring sleeve
- End stopper for the nut
- Permanent anti-dislocation of the slide
- Anti-hand-trap system (from TPE 300)
- Hot dip galvanizing

### OPTIONS

- Nut color on request
- Spindle holding system in place system pin
- Custom made end-plates available on request
- Endplates removable (pin)

### PERMISSIBLE LOADS IN TONNES (*coefficient 3 centered load*)

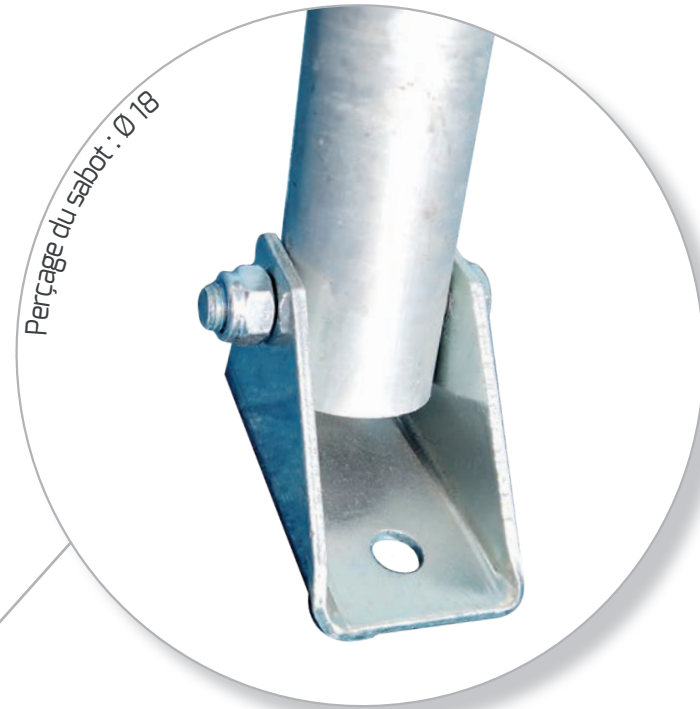
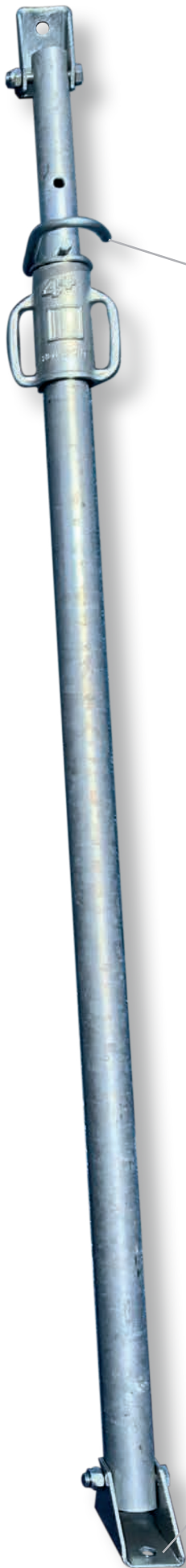
Strut	Ref	Designation	Height (mm)	Weight (kg)	550	800	1000	1200	1400	1500	1700
	112-0080C	TPE 80	550/800	7,1	1,90	1,70					
	112-0120C	TPE 120	800/1200	8,8		1,90	1,80	1,60			
	112-0170C	TPE 175	1000/1700	11,3			1,80	1,80	1,60	1,50	1,40

Standard	Ref	Designation	Height (mm)	Weight (kg)	1550	1700	2000	2200	2600	3000	3200	3500
	112-1260C	TPE 260	1550/2600	13,6	1,80	1,70	1,60	1,50	1,20			
	112-1290C	TPE 300	1700/3000	15,3		1,80	1,80	1,70	1,40	1,10		
	112-1310C	TPE 350	2000/3450	17,1			1,80	1,80	1,50	1,20	1,00	1,00

High Height	Ref	Designation	Height (mm)	Weight (kg)	2200	2600	3000	3200	3500	3800	4000	4200	4500	4800	5000	5500	6000
	112-1400C	TPE 400	2200/3950	18,6	1,70	1,70	1,50	1,30	1,10	0,90	0,70						
	112-1450C	TPE 450	2700/4500	21,2			1,70	1,50	1,30	1,00	0,80	0,70	0,60				
	112-1500C	TPE 500	3000/5000	25,6			1,70	1,60	1,50	1,20	0,90	0,70	0,60	0,50	0,40		
	112-1550C	TPE 550	3100/5500	29				1,70	1,60	1,50	1,20	0,90	0,70	0,60	0,50	0,30	
	112-1600C	TPE 600	3500/6000	30,2					1,70	1,60	1,30	1,00	0,90	0,70	0,60	0,40	0,30



# RANGE RAS TP

## THE PUSH-PULL PROP FOR HEAVY LOADS

- Outer tube : Ø 76,1 x 2,7 mm
- Inner tube : Ø 60,3 x 3,6 mm
- Open thread : 2 bichromate-plated cast-iron nuts Ø 76 mm with adjusting handle Ø 18 mm
- Unloosable steel pin S 355 : Ø 16 mm zinc-plated
- Articulated endplates : length 180 mm attachment using HM16 x 110 bolts or HM16 x 120 bolts+ HM16 nut in Ø 17 mm hole

### STANDARD EQUIPMENT & FINISHES ON PRODUCT IN STOCK

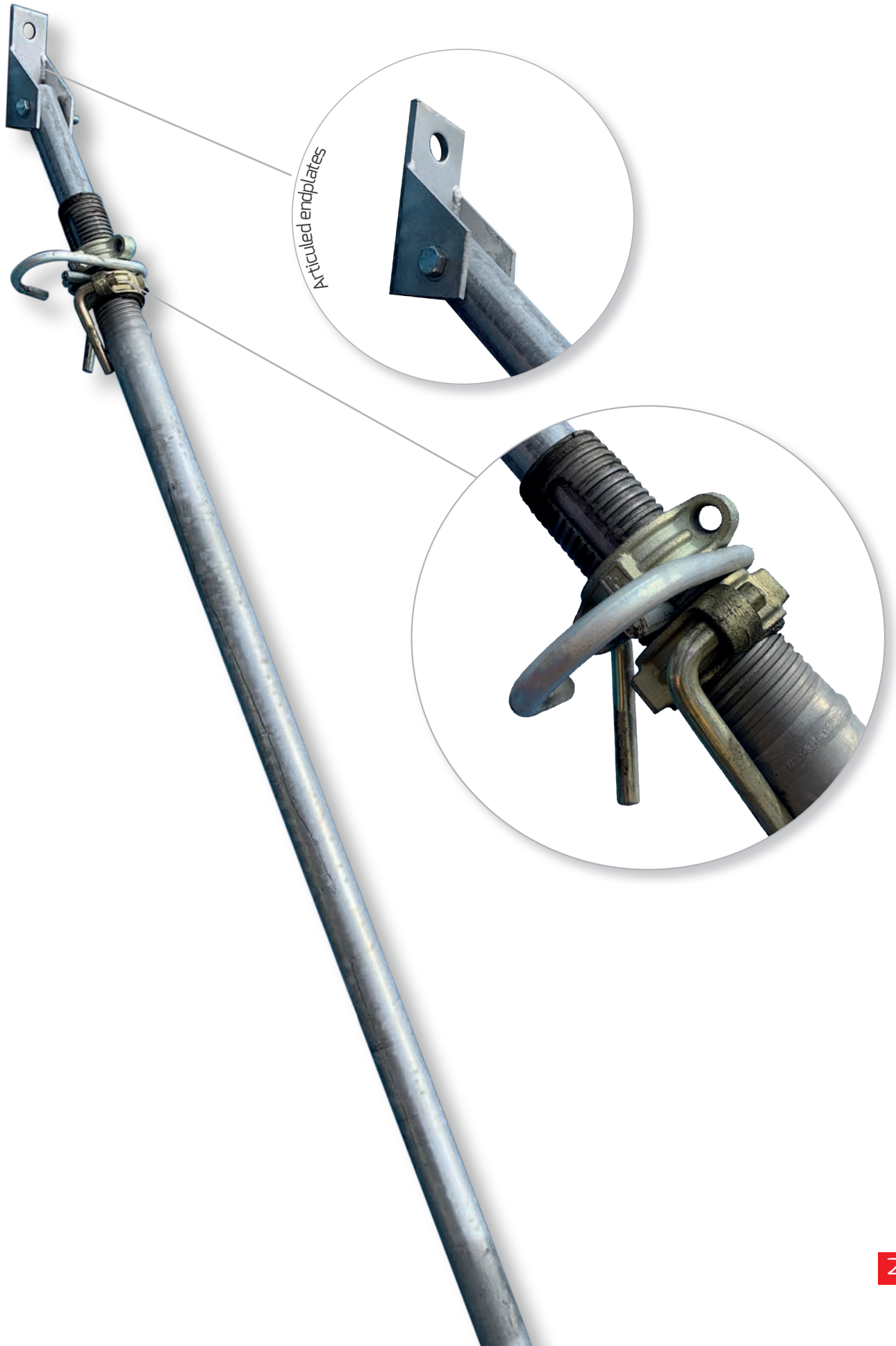
- Permanent anti-dislocation of the slide
- Hot dip galvanizing

### OPTIONS

- Nut color on request
- Spindle holding system in place system pin
- Custom made end-plates available on request

### PERMISSIBLE LOADS IN TONNES (*coefficient 3 centered load*)

Ref	Designation	Height (mm)	Weight (kg)	2500	2750	2900	3100	3500	4000	4500	5000					
112-2405A	RAS TP 405	2300/4050	27	2,50	2,40	2,20	2,00	1,50	1,50							
112-2455A	RAS TP 455	2550/4550	34		2,50	2,40	2,40	2,00	1,50	1,40						
112-2505A	RAS TP 505	2900/5050	38			2,50	2,40	2,00	1,60	1,40	1,10					
Ref	Designation	Height (mm)	Weight (kg)	3100	3500	4050	4500	5000	5450	5950	6500	7000	7500	8000	8300	
112-2545A	RAS TP 555	3050/5450	39	2,50	2,40	2,10	1,50	1,40	0,90							
112-2595A	RAS TP 605	3400/5950	43		2,40	2,30	2,00	1,50	1,00	0,80						
112-2700A	RAS TP 705	4050/7000	50			3,00	3,00	2,20	1,70	1,30	1,10	0,90				
112-2755A	RAS TP 750	4500/7500	57				2,90	2,30	1,80	1,40	1,10	0,90	0,80			
112-2830A	RAS TP 830	5750/8300	62							2,50	1,80	1,10	0,90	0,70	0,70	



# RANGE TP 1000

## THE **HIGH**-PUSH-PULL PROP

- **Outer tube** : Ø 101,6 x 3,6 mm
  - **Inner tube** : Ø 88,9 x 3,2 mm
  - **Open thread**
  - **Base strut** : Ø 60,3 x 3,6 mm
  - **Reducing outer tube size** : Ø 48 x 60 mm
  - **Pin** : Ø 18 mm, lg 165 acier S 235
  - **RAS TP endplates** : length 180 mm attachment using HM16 x 110 bolts or HM16 x 120 bolts+ HM16 nut in Ø 17 mm hole
  - **GS cast-iron nut** : Ø 76 mm bichromate-plated with adjusting handle Ø 18 mm and 2 adaptateurs TP (système breveté)
- 
- **Hot dip galvanizing**
  - **Endplates on request (RAS-TP endplates ou spiders length 170 or special endplates)**



**PERMISSIBLE LOADS IN TONNES** (*coefficient 1.65 centered load*)  
Tension load = 3.4 t at any height

Designation	Height (mm)	Weight (kg)	6000	6500	7000	7500	8000	8500	9000	9500	10000
TP 1000	6000/10000	100,0	3,40	3,40	2,90	2,40	2,00	1,70	1,40	1,20	1,00



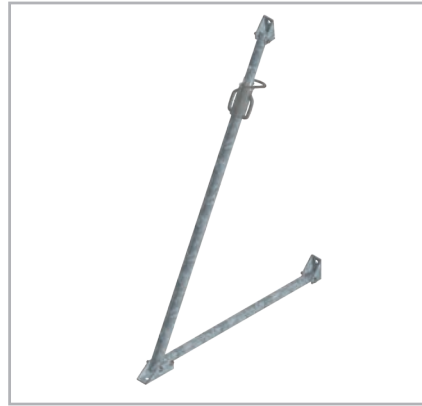


# STABILIZATION

The entire range of push-pull props can be transformed into a stabilizer with the addition of braces. There are 3 types of struts:



Strut prop : to choose from the pull-push range



Fixed strut length 1,00 m



Adjustable strut 1,00 à 1,75 m

## STABETAIS FUNCTION

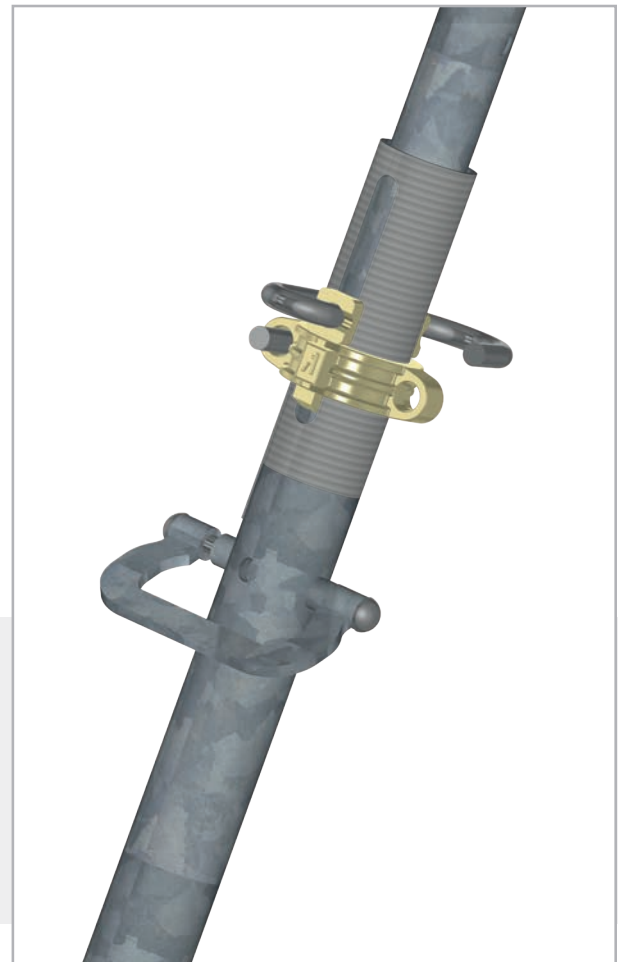
On formwork :

- 1 prop for adjusting the plumb of the formwork and maintaining it
- 1 anti-overturning strut to guarantee the maintenance of the form when the adjustment strut is not in place

To replace these 2 products with just 1, we have developed the STABETAIS FUNCTION on our TP props which makes it possible to adapt the anti-reverse function to all types of push-pull props (with protected or visible thread) and to ensure stability in all forestay adjustment phases.

This STABETAIS FUNCTION consists of the addition of various technical elements:

- 1 square tube 40 x 40 x 2 mm inserted in the slide of the push-pull prop
- 1 STABETAIS lock
- 1 handle of STABETAIS for easy handling

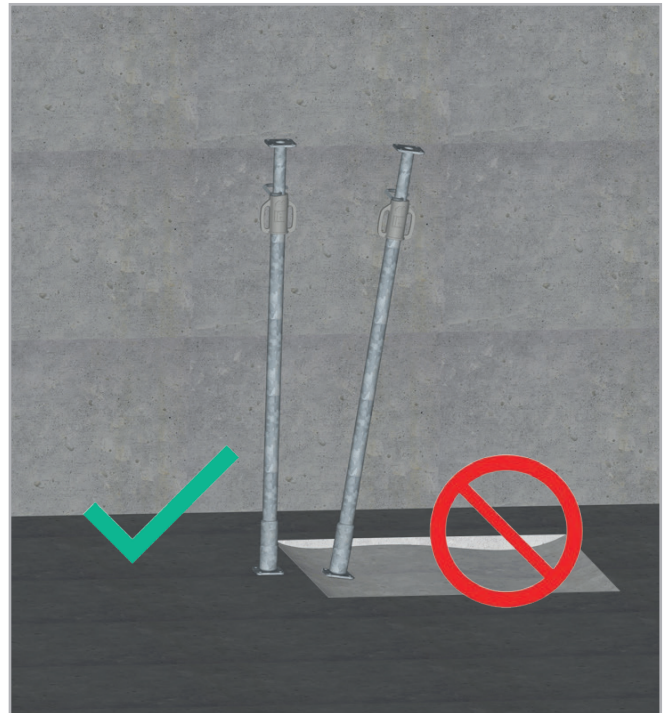
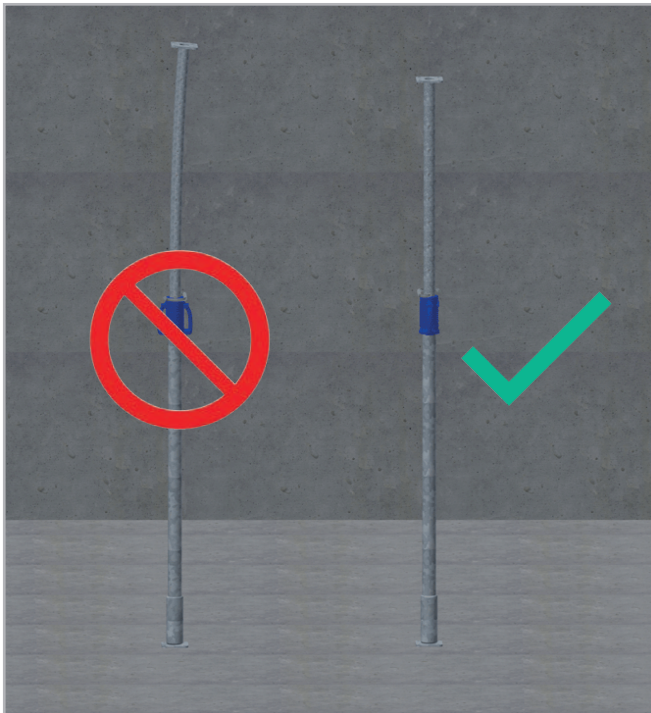




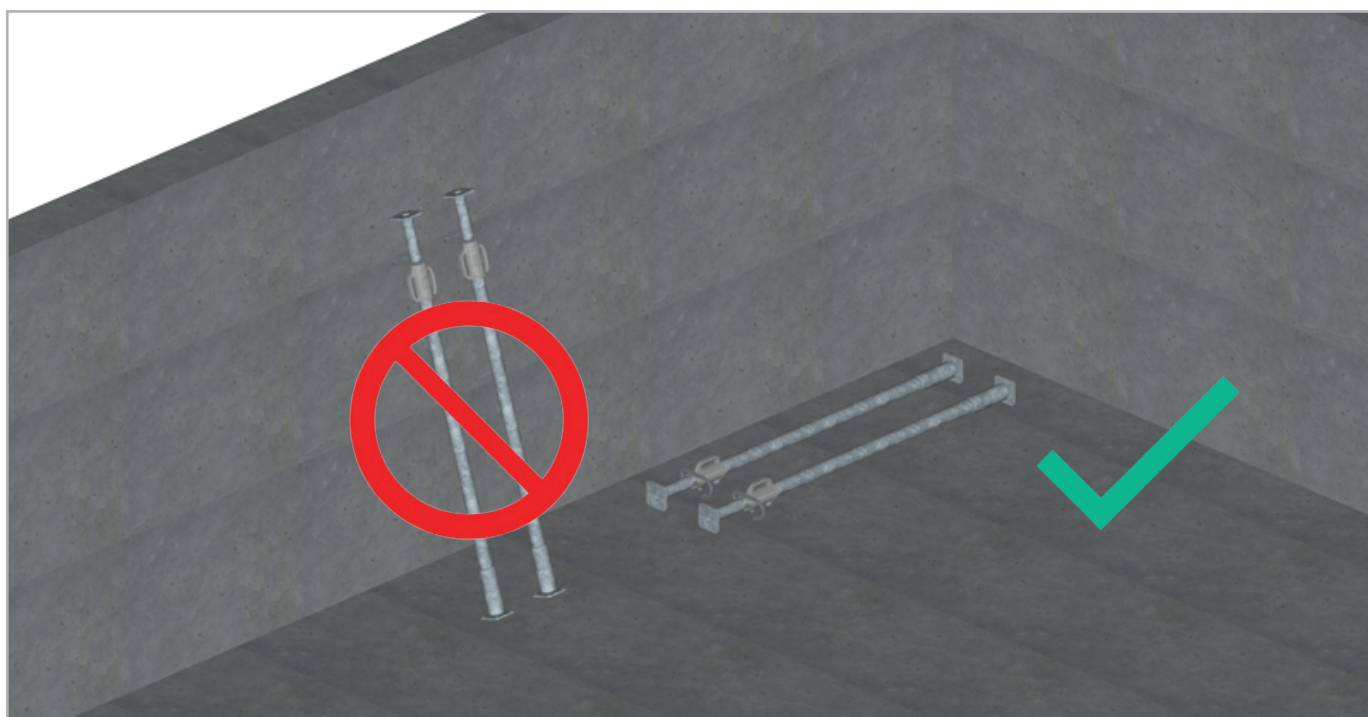


## WARNING !

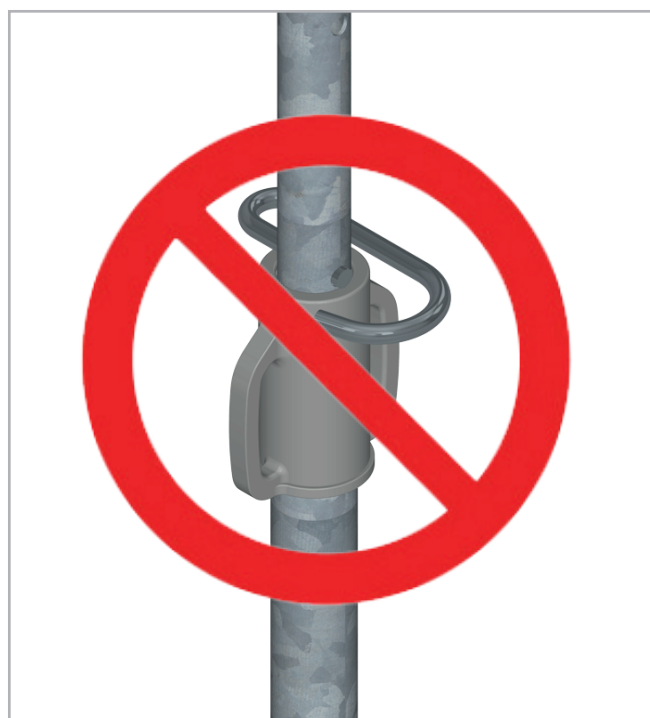
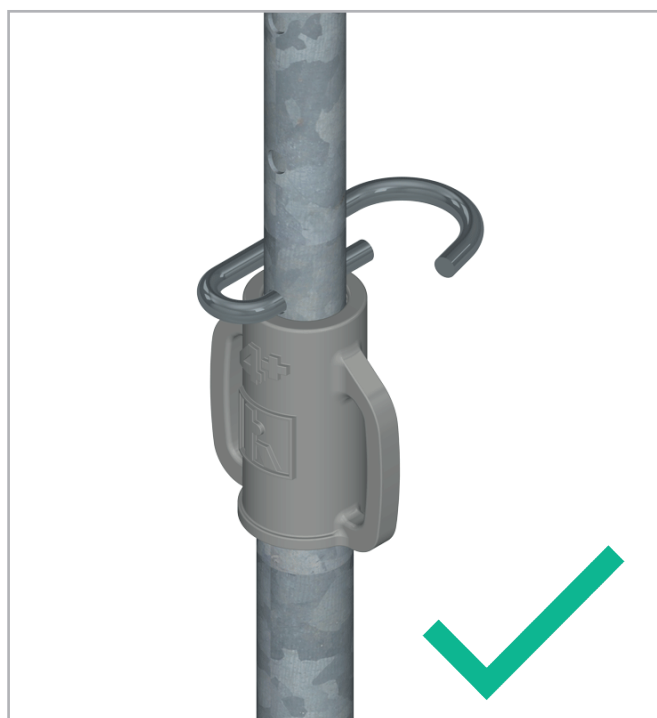
- The elements presented in this documentation correspond to the characteristics of the material on the date of publication of the document. We reserve the right to make any changes in a new edition.
- The uses are not without risks and require specific control.
- Before starting to assemble a prop, the work area must be secured.
- To facilitate the handling of the props inside buildings, the use of baskets is strongly recommended



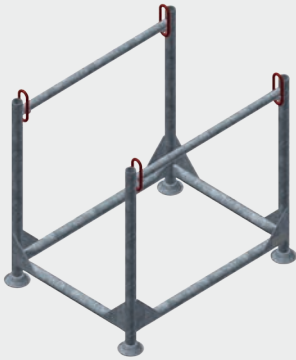
- Verification of quantities and validation of the delivery slip once the props are received on the site.
- Material control: do not use any deformed or damaged material.
- Check the area to be supported before placing the material (soil deformation, hole, etc.)



- It is forbidden to position the stays in the middle of the sails.



- The pin must be inserted all the way so that it rests on the washer.



**Réf. 521-0005D - Cage 110X80 with upper lifting ring**

**Characteristics :**

- Galvanized steel
- Weight : 58 kg
- SWL : 20 kN uniformly spreaded on the lower bar
- Storage capacity : 50 props Ø 76 mm or 100 props Ø 57 mm within SWL

**User-friendly :**

Top-lifting : lifting and handling one cage at a time. Easy acces to the lifting rings.



**Réf. 521-0005A - Galva standard cage 110X80**

**Characteristics :**

- Galvanized steel
- Weight : 50 kg
- SWL : 20 kN uniformly divided on the lower bar
- Storage capacity : 50 props Ø 76 mm or 100 props Ø 57 mm within SWL



**Réf. 521-0004A - Standard frame DIA 48. Untreated**

**Characteristics :**

- Galvanized steel
- Weight : 30 kg
- SWL : 20 kN uniformly divided on the lower bar
- Storage capacity : 50 props Ø 76 mm or 100 props Ø 57 mm within SWL



**Réf. 521-0005G - Cadre Standard DIA 48. Brut**

**Characteristics :**

- Untreated steel
- Weight : 17kg



**Réf. 521-0005H - Ballot de colisage**

**Characteristics :**

- Wood and hooping





**+40** countries  
where we have already worked



**HEAD OFFICE & EXPORT**

Parc d'activités de la Verdrière II  
13880 Velaux - FRANCE  
+33 (0)4 42 10 84 15  
export@altrad-coffrage.com



[www.altrad-coffrage.com](http://www.altrad-coffrage.com)