

SIMPLE TO REPLACE BOLT-IN RAILINGS

Bolt-in platform railings not only provide a durable structure, but also a service part that's easily replaceable. Optional gate entrances and different sized platforms are also available.



ELECTRICAL SECONDARY GUARDING SYSTEM

Skyjack's SGE system is intended to prevent sustained involuntary operation.

OPTIONAL FEATURES

ELEVATE MORE THAN TELEMATICS

ELEVATE provides the actionable insights to make your business more efficient. These Skyjack-specific features deliver immediate impact for your business:

- Overload detection and reporting
- True machine utilisation
- CAN data and alerts (including engine)
- Full data access

ELEVATE LIVE

ELEVATE Live provides machine specific telematics data, as well as machine specific familiarisation and documentation.

**To the operator.
At the machine.
When it's needed.**



ACCESSORYZERS™

Skyjack's approved accessories are designed to add functionality to your machine and convenience for the operator.



ELECTRIC ARTICULATING BOOMS



Skyjack UK

Unit 1, Maes-y-Clawdd
Maesbury Road Industrial Estate
Oswestry, Shropshire, SY10 8NN
Tel: +44 1691 676235
Fax: +44 1691 676239
Email: info@skyjackeurope.co.uk

Skyjack SAS (France)

74 Rue Sibert
F-42400 Saint Chamond
France
Tel: +33 (0) 4 78 73 53 32
Fax: +33 (0) 4 78 56 52 42

Skyjack Hebebühnen GmbH (Germany)

Därmanbusch 2a
D-58456 Witten
Tel: +49 (0) 2302 20 26 909
Fax: +49 (0) 2302 20 25 671

Skyjack AB (Sweden)

Agnesbergsvägen 28
424 38 Agnesberg
Sweden
Tel: +46 (0) 31 21 22 45
Fax: +46 (0) 31 787 65 10

www.skyjack.com

This brochure is for illustrative purpose only and based on the latest information at the time of printing. Skyjack Inc. reserves the right to make changes at any time, without notice, to specifications, standard and optional equipment. Consult the Operating Maintenance and Parts Manuals for proper procedures. CE marked work platforms are in conformance to Machinery Directive 2006/42/EC.



CE/ENG 04/24

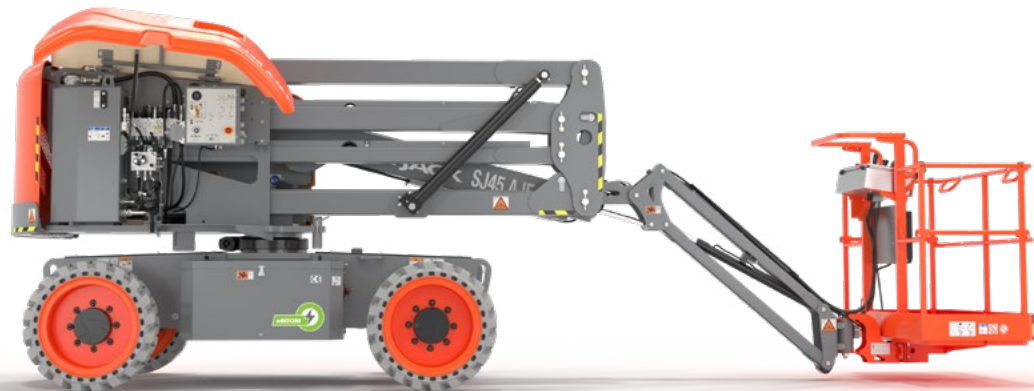
SKYJACK
simply reliable

SIMPLY ELECTRIC, SIMPLY MORE

Skyjack's new range of battery powered electric rough terrain articulated booms have been developed to provide a clean, quiet, sustainable rental solution with, no emissions, lower operating costs, increased utilisation.

Available with 15.7 m (51 ft) and 20.1 m (66 ft) working heights and suitable for indoor and outdoor use, the **SJ45 AJE+** and **SJ60 AJE+** models include many of the design features that you have come to expect from Skyjack. High performance AC electric traction and pump motors deliver high torque power and consistent multi-function capability.

This new range remains simple, reliable and provides an environmentally friendly and sustainable choice for rental.






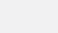


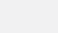
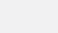
DESIGNED FOR RENTAL

Skyjack became an industry leader by providing machine features that combine durability, quality, and serviceability, making our products world renowned for product reliability.

Our team understands the importance of maximum uptime, so our equipment is designed to provide just that. All major service points are easily accessible, enabling straightforward troubleshooting and repairs.



Rental companies and major contractors face increasing demands for sustainability information. Skyjack has introduced its ECO mark to support our customers by providing products that deliver benefits in environmental performance and long-term sustainability. Skyjack's E-Drive booms' ECO benefits include:

-  42% operational carbon saving compared to previous model*
-  ZERO emissions
-  <70 dB inherently quiet machine operation (excl. alarms)
-  White noise/broadband alarms – optional
-  90% recyclable (by weight)
-  Up to 50% less hydraulic connections – reduces leak potential
-  Bio-degradeable hydraulic oil – optional
-  Telematics – remote diagnostics reduces site visits (operational carbon foot print)

*Compared to SJ45 AJ+ & SJ60 AJ+ diesel



ELECTRIC DRIVE

Skyjack's SJ45 AJE+ and SJ60 AJE+ have been designed to meet true job site performance expectations, whether it be navigating various rough terrain conditions or lifting the platform.

All electric, four-wheel, axle-based drive provides improved efficiency and rough terrain performance. The drive system uses a high-performance AC induction traction motor and AC pump motor system to optimise current torque, power and speed.

An oscillating steer axle works in conjunction with the drive system to keep all four tyres in contact with the ground, even in the roughest of terrain. Improved traction provides a noticeably smoother ride and consistent multi-function capability delivers a superior operator experience.

- Operator controlled locking rear differential and limited slip front differential
- Drivable at full height
- 48V system
- 23A automatic battery charger with battery condition indicator
- 8 x 415 Ah AGM batteries
- Standard non-marking tyres



SCAN TO VIEW SPECIFICATIONS TABLE (PDF)

SKYCODED™ COLOUR CODED & NUMBERED WIRING

At the heart of every Skyjack machine is our proven and simplistic control systems, and the SJ45 AJE+ and SJ60 AJE+ are no different. A dual controller system integrates with Skyjack's colour coded and numbered wiring system, making our machines the easiest to troubleshoot and repair.

INCREASED CAPACITIES

Capacities up to 454 kg (1000 lbs) and 3 persons in the platform.

- Increases productivity
- Integrated with load sensing
- Lights on control box indicate zone, based on weight and position



LOWER OPERATING COSTS

Skyjack's electric booms provide additional low lifetime ownership and running costs:

- Efficient maintenance-free AGM batteries
- No engine maintenance requirements - no liquid fuel systems, filters or emission control costs
- Much easier for customers to use
- Straightforward to maintain and service means less mechanic time



UNIQUE TO SKYJACK

AXLDRIVE.

SUPERIOR TRACTION

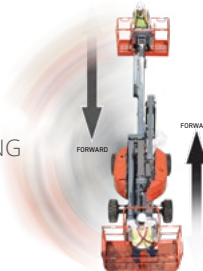


SPEEDYREACH.

MAXIMUM SPEED & CONTROL
(SJ60 AJE+ ONLY)

EASYDRIVE.

DRIVE & STEER DIRECTION SENSING



SKYRAISER.

TRUE VERTICAL RISE