



Bobcat[®]

One Tough Animal[®]

2 - 5 m³/min AIR COMPRESSORS

🌐 Europe



ONE TOUG ANNIM

► **OUR MISSION**

We empower operators to accomplish more, while working in the toughest conditions and tightest situations. When our customers have the will, we provide the way.

INTRODUCTION



▶ BOBCAT'S HISTORY

In 1958, Melroe Manufacturing Company introduced a compact front-end loader that evolved quickly into the M400, the world's first true skid steer loader. The company soon adopted what became the world-famous 'Bobcat' brand – and its success paved the way for the global compact equipment industry we know today.

▶ YEARS OF EXPERIENCE

We have over 120 years of experience in developing, building and testing portable air machines. That means every machine that leaves the factory has over a century of reliability and toughness embedded in its DNA.



▶ BOBCAT TODAY

Equipped with Bobcat-developed technologies and a pack of modern features, we make sure our machines allow you to accomplish more every day – no matter the task.

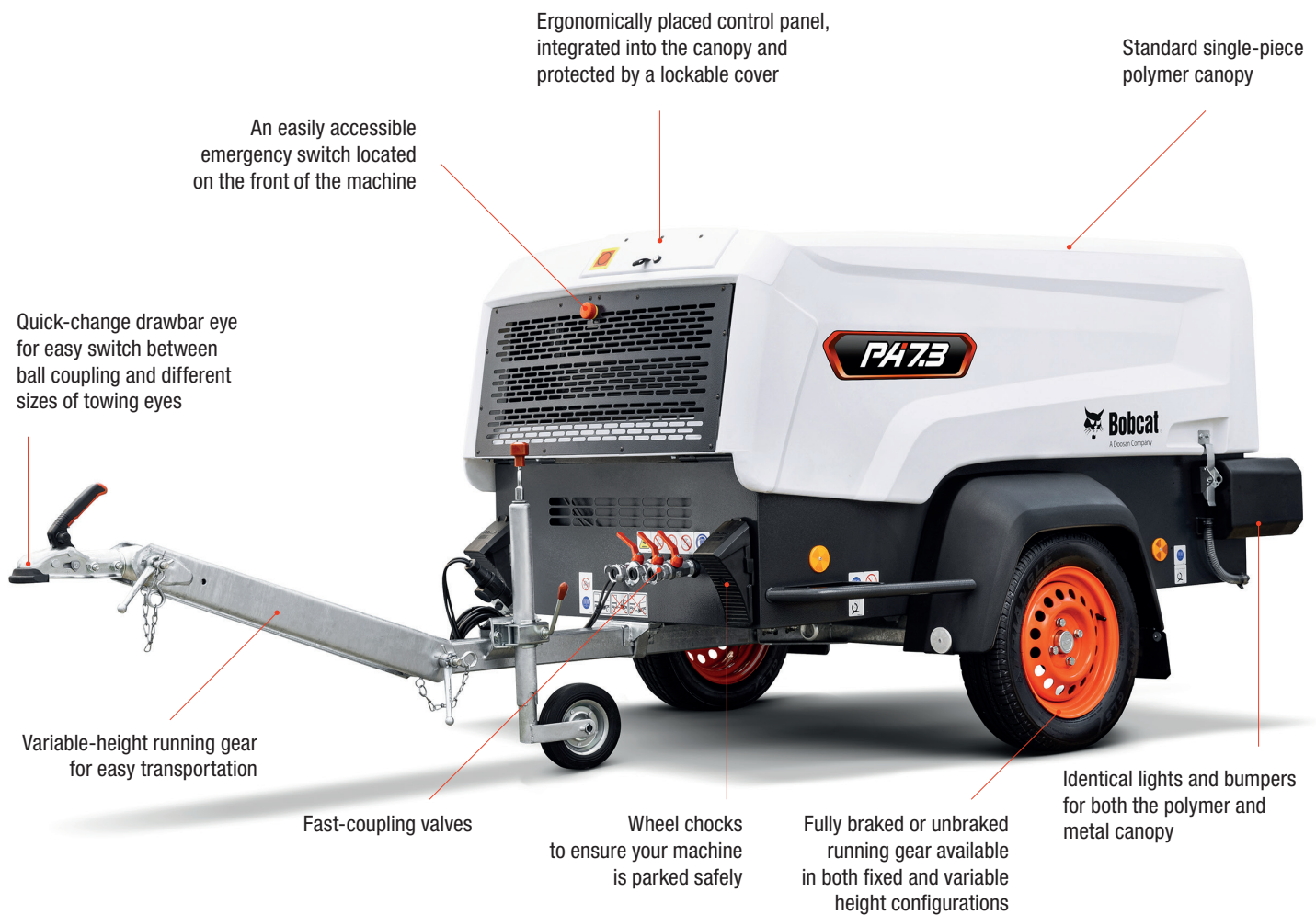


Small Air Compressors 3

TOUGH, DURABLE & RELIABLE

► DESIGNED TO DO MORE

Our portable air compressors offer unmatched performance in a compact, durable, and reliable package, enabling you to accomplish more every day. Equipped with reliable Kubota and Yanmar engines, an intuitive interface, a heavy-duty canopy, and multiple connection options, they deliver a performance that transforms the way you work.



► LIGHTWEIGHT PACKAGE

The most powerful machine in the range, including optional aftercooler and lubricator, weighs only 735 kg. This leaves up to 15 kg for additional features and easy transportation.



► THE MOST DURABLE

When we say our machines are durable, we mean it. Rigorously tested in the roughest conditions, they'll always have your back, whether you work on a mountaintop or in the desert.



▶ READY FOR ACTION
Our small compressors offer a wide range of optional features and additional accessories, ensuring you're covered on any job site.
P. 8



▶ SIMPLE AND INTUITIVE
Bobcat portable air compressors are simple to use thanks to well-placed controls, central fluid drains, and proven connectivity points. They have just what you need, exactly where you need it.
P. 16-17



PERFORMANCE



▶ ALL THE POWER YOU NEED

This range of models offers a flow range of 2–5 cubic meters per minute at a nominal pressure of 7 bars. The range also includes a 14-bar unit that delivers a flow of 3 cubic meters per minute, making challenging tasks like optic cable jetting a piece of cake.



▶ BUILT TO ENDURE

Our machines are built to endure the toughest conditions. They perform comfortably in temperatures ranging from -10 °C to +46 °C without any loss in performance, so you can fully rely on them to get the job done.



▶ OUTSTANDING FUEL EFFICIENCY

The combination of reliable premium engines and an efficient airend forms a stellar duo, delivering class-leading fuel consumption and efficiency. Enhance your machine's fuel consumption further with the ECOmizer option.



▶ EXTRA WORK? NO PROBLEM

Equip your compressor with various optional equipment, such as a generator, aftercooler, lubricator refinery kit, and much more, to enhance the machine's versatility and productivity.

CONTROLS & CONNECTIONS



► EASY-TO-OPERATE CONTROL PANEL

The control panel is designed with the operator in mind. The start switch is easy to handle with gloves, the gauges remain readable even on the brightest days, and a quick guide assists novice operators. Equipped with a diagnostic dashboard, the panel is conveniently placed on the machine, eliminating the need to bend down.



► UNIVERSAL CONNECTION



Thanks to the variable towing bar with either a hitch ball or a wide range of different sizes of towing eyes, you can connect the machine to a variety of carriers.

► VARIABLE HEIGHT CONNECTION



You can choose from fixed or variable-height towing bar configurations.

► HOSE REEL



The optional hose reel allows you to easily connect hoses, making you more agile on the job site.

BUILT TO LAST

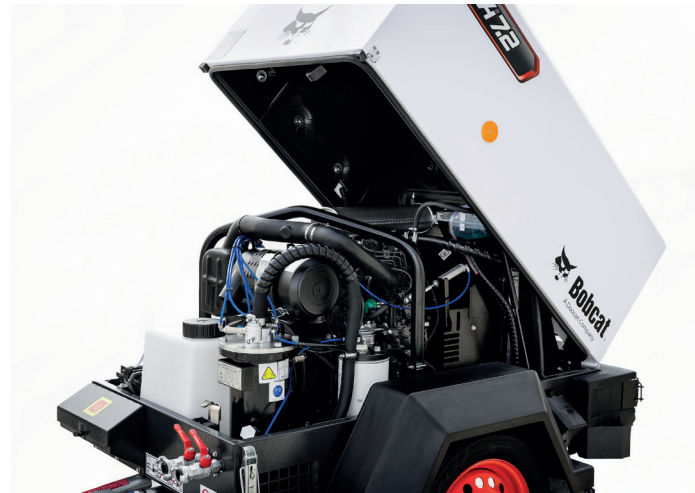
► TOUGHNESS IS IN OUR DNA

We know how tough the industry and our users are. That's why we rigorously test each machine for optimal performance, reliability, and toughness. From the hood to the running gear, every part is crafted with the best materials and packed with innovative technologies, enabling you to achieve more every day.

2 YEAR WARRANTY

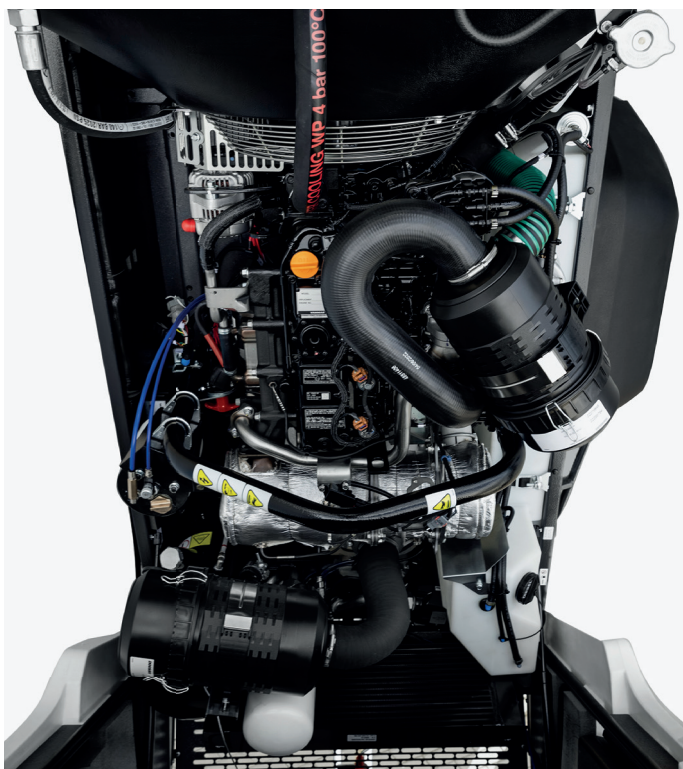
► WARRANTY

Bobcat develops every machine to the highest standards of quality and durability. That's why our standard warranty provides 24 months or 2 000 operating hours of coverage for the entire machine package and 60 months or 10 000 hours for the airend (months or hours, whichever occurs first).



► LARGE FUEL TANK

Our compressors feature a large fuel tank of up to 58 liters, allowing you to focus on your work. The tank is easy to fill and keeps your machine up and running autonomously for a minimum of 8 hours, with an average working cycle of 50/50 full load/idle.



► UP TO 70% COMPONENT COMMONALITY

With up to 70% parts commonality across the range, you can streamline repairs and save space in the shop. Many parts, including the running gear, base, canopy, and control panel, can be installed on different models, reducing your total cost of ownership (TCO) and minimizing downtime.

► MAINTENANCE MADE EASY

To maximize your uptime, we've made the maintenance of our compressors as easy as possible. The canopy opens towards the drawbar with a wide angle of 60° for daily maintenance and 90° for service procedures.

The convenient position of the cooling pack, and the placement of all replaceable parts right in front of the operator, ensure that your machine is back up and running in almost no time.

LINEUP

CHOOSE YOUR ANIMAL

2 m³/min AIR COMPRESSOR

► PROVEN RELIABILITY

The reliable PA7.2 is our 2 m³ showcase model — a machine known for its unwavering dependability. Equipped with a standard metal canopy, 2 service vents, and various optional features, it's the ideal solution for those seeking a straightforward, resilient, and proven machine that never quits.



2.5 – 5 m³/min AIR COMPRESSORS

► TOUGHNESS IN A MODERN PACKAGE

With a standard durable and lightweight polymer canopy, integrated banded base, intuitive control panel, 3 service vents, central liquid drains, and robust LED lights, these machines are the most advanced compressors in the range. Perfect for those who prioritize toughness, reliability, and performance in a modern, lightweight package.



STANDARD EQUIPMENT & OPTIONS

	PA7.2	PA7.3	PA7.4	PA7.5	PA14.3
PERFORMANCE					
Central lifting point	✓	✓	✓	✓	✓
Fuel/water separator	✓	✓	✓	✓	✓
"Push after warm-up" button	–	✓	✓	✓	✓
Dual mode machine	–	–	–	–	–
Bunded base with 110% fluids containment with central drains	•	✓	✓	✓	✓
Jockey Wheel	•	✓	✓	✓	✓
Document box	•	✓	✓	✓	✓
Diesel particulate filter	–	–	✓	✓	✓
CANOPY					
Polymer	–	✓	✓	✓	✓
Steel	✓	•	•	•	•
ROADLIGHTS					
No roadlights	✓	•	•	•	•
LED – 13 pins (UK only)	•	–	–	–	–
7 pins (max. 750 kg)	•	–	–	–	–
Reverse light (13 pins)	•	–	–	–	–
Adapter from 7-pins to 13-pins	•	–	–	–	–
Adapter from 13-pins to 7-pins	•	•	•	•	•
AFTERCOOLER					
Aftercooler with water separator only	–	•	•	•	•
Aftercooler with water separator and filters	–	•	•	•	•
Aftercooler with water separator and IQ filters	–	–	–	–	–
REFINERY					
Spark Arrestor	•	•	✓	✓	✓
Overspeed valve	–	•	•	•	•
GENERATOR OPTION					
8.5 kVA 110V Generator option	–	•	•	•	•
6 kVA 230/400V Generator option	–	•	•	•	•
MISCELLANEOUS					
ECOmizer	–	–	•	•	•
Lubricator	•	•	•	•	•
Hose reel	–	•	•	•	•
Dual pressure switch	–	–	–	–	–
Safety chain on drawbar	•	•	•	•	•
Low Fuel Light including fuel switch	–	•	•	•	•
Emergency stop	–	•	•	•	•
Fuel transfer pump	–	–	–	–	–
Toolbox	–	•	•	•	•
Anti-theft security chain	•	•	•	•	•

• = option
 ✓ = standard
 – = not available

STANDARD EQUIPMENT

Our air compressors come with standard features right out of the factory, allowing you to get to work from day one. These features cover everything from ease-of-use to productivity, setting a new standard for modern portable power equipment.



Heavy-duty LED lights



Polymer canopy



Jockey wheel



Bundled base



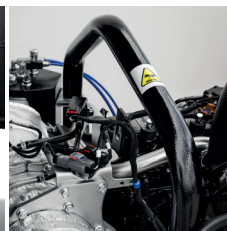
Spark arrestor



Intuitive control panel



Central drains



Central lifting point



'Push after warm-up' button

OPTIONAL EQUIPMENT

At times, you may want to add a specific functionality or a personal touch to your machine. Explore our comprehensive list of options and customize your air compressor to your heart's content!



Hose reel



Emergency stop



Wheel chocks



Safety chain on drawbar



Generator

SMALL AIR COMPRESSORS

SPECIFICATIONS					
	PA7.2	PA7.3	PA7.4	PA7.5	PA14.3
GENERAL DATA					
Emission Compliance	Stage V				
Free Air Delivery – m ³ /min (CFM)	2.0 (70)	2.5 (90)	4.0 (140)	5.0 (180)	3.0 (105)
Rated Operating Pressure – bar (psi)	7 (100)				13.8 (200)
ENGINE					
Make	Kubota	Yanmar			
Model	D1005	3TNV76	3TNV88C	4TNV88C	
Number of cylinders	3			4	
Full load speed – rpm	3 000				
Power – kW (hp)	17.5 (23.5)	18.9 (25.3)	27.5 (36.9)	35.5 (47.6)	
Electrical – Volts	12				
Cooling	Water				
Fuel Tank capacity – liters	26	58			
SOUND LEVEL DATA					
Fully compliant to outdoor noise directive 2000/14/EC (2006)	97	98			



▶ ROCK-SOLID CONSTRUCTION TOOLS

Our construction tools stand out for their excellent performance, thanks to ongoing improvements and the adoption of new technologies.

With a solid 1-year warranty and strong dealer support, we're dedicated to providing assistance for technical queries and training.

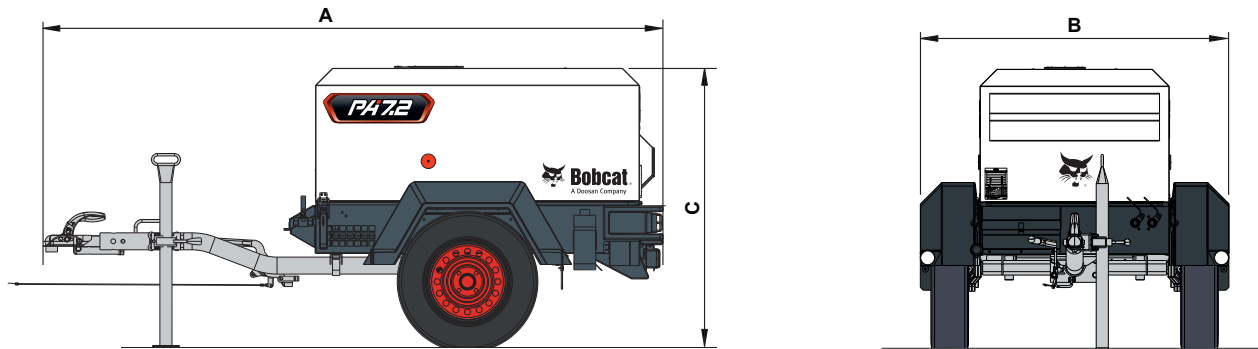
Our rock drills, chipping hammers, and pick hammers are designed for easy maintenance and low parts replacement costs. We achieve this by minimizing the number of moving parts, ensuring high reliability and uptime.

Certain specification(s) are based on engineering calculations and are not actual measurements. Specification(s) are provided for comparison purposes only and are subject to change without notice. Specification(s) for your individual Bobcat equipment will vary based on normal variations in design, manufacturing, operating conditions, and other factors. Pictures of Bobcat units may show other than standard equipment.

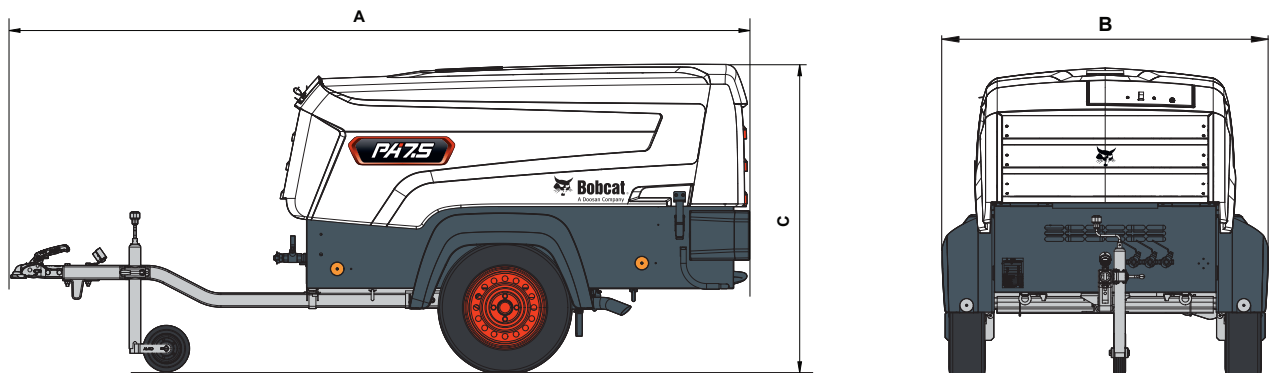
SPECIFICATIONS

DIMENSIONS					
	PA7.2	PA7.3	PA7.4	PA7.5	PA14.3
Tire size	155R13				
Number of wheels	2				
Weight (net) fixed / adjustable – kg	430	450 / 559	620 / 628	660 / 669	
Weight (working) fixed / adjustable – kg	445	595 / 604	665 / 673	705 / 714	
Weight max. (ref. dataplate) – kg	750				
A Length fixed towbar – mm	2 611				3 475
A Length min./max. adjustable towbar – mm	2 695 / 2 905		3 400 / 3 665		
B Width – mm	1 272		1 410		
C Height – mm	1 130		1 350		

▶ 2 m³/min AIR COMPRESSOR

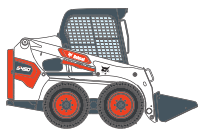


▶ 2.5 – 5 m³/min AIR COMPRESSORS

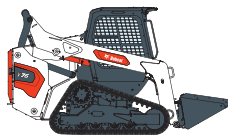




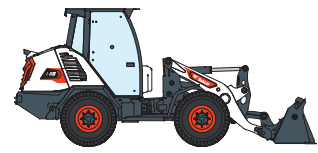
340 MACHINES / 150 ATTACHMENT FAMILIES / 1 TOUGH ANIMAL



SKID-STEER LOADERS



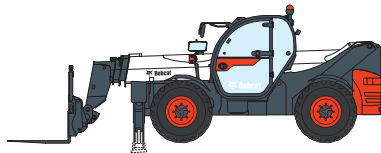
COMPACT TRACK LOADERS



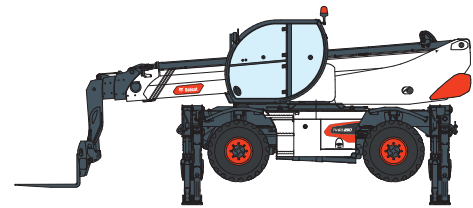
COMPACT WHEEL LOADERS



FORKLIFTS



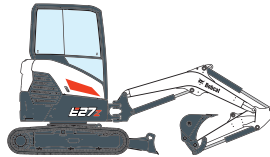
TELEHANDLERS



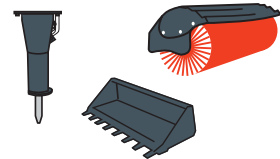
ROTARY TELEHANDLERS



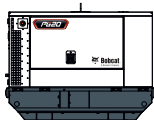
LIGHT COMPACTION EQUIPMENT



COMPACT EXCAVATORS



ATTACHMENTS



GENERATORS



AIR COMPRESSORS



MOWERS



COMPACT TRACTORS



Bobcat®

DOOSAN

Bobcat is a Doosan Company. Doosan is a global leader in construction equipment, power & water solutions, engines, and engineering proudly serving customers and communities for more than a century. | Bobcat and the Bobcat logo are registered trademarks of Bobcat Company in the United States and various other countries. ©2024 Bobcat Company. All Rights Reserved.

*Financing options may vary by country and dealer. Always ask your dealer about currently available financing options. Terms and conditions may apply.

Doosan Bobcat EMEA, U Kodetky 1810, 263 12 Dobříš, Czech Republic

www.bobcat.com

©2024 BOBCAT P4700530-EN (01-24)