

# MicroStep®



## Selected References

The right solution for every cutting task

Plasma  
Laser  
Oxyfuel  
Waterjet

# The right solution

for every cutting task



2D cutting



Bevel cutting



Pipe & profile cutting



Dome cutting



Can be combined with additional technologies:

- Drilling, tapping, countersinking
- Marking
- Scanning
- Material handling

[www.microstep.eu](http://www.microstep.eu)



Doppelmayr Seilbahnen GmbH (Austria)  
Transport Systems



## MACHINE PROFILE

### DRM series

- Working area 13,500 x 3,000 mm
- Drilling up to Ø 50 mm and tapping up to M33

### MG series

- Working area 31,000 x 3,000 mm

#### 1. gantry

- Plasma rotator for weld preparation up to 50° with auto-calibration feature (ACTG®)
- 2D plasma
- 2x 2D oxyfuel
- CCD camera for detecting of position of drilled holes

#### 2. gantry

- Plasma rotator for weld preparation up to 50° with auto-calibration feature (ACTG®)

- 2D plasma
- 2x 2D oxyfuel
- CCD camera for detecting of position of drilled holes

### MG series

- Working area 18,000 x 3,000 mm

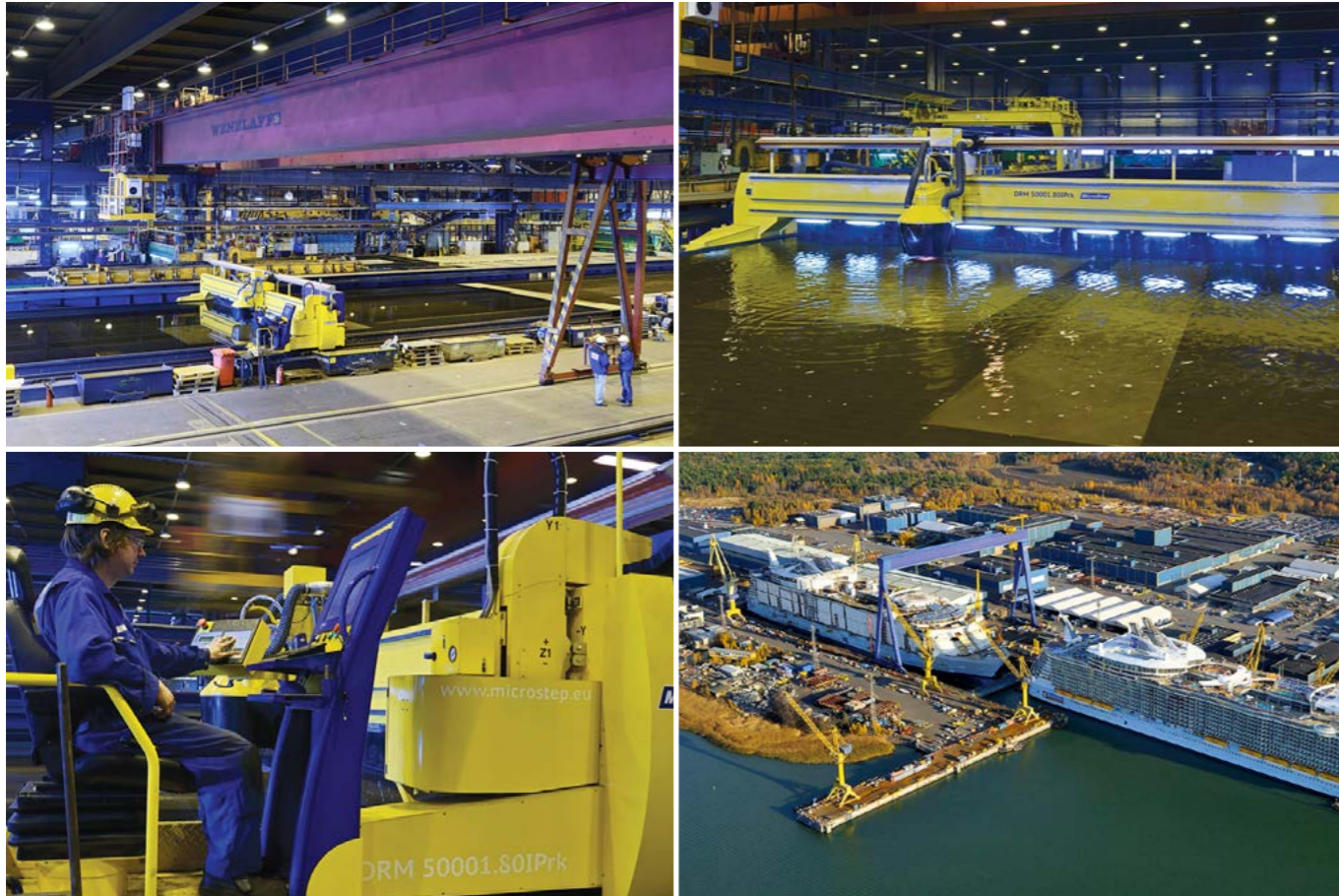
#### 1. gantry

- Plasma rotator for weld preparation up to 50° with auto-calibration feature (ACTG®)
- 2D plasma
- 2x 2D oxyfuel
- CCD camera for detecting of position of drilled holes

#### 2. gantry

- 4x 2D oxyfuel

2002 saw the merger of two leading ropeway manufacturers with a long tradition: Doppelmayr and Garaventa. This gave rise to the Doppelmayr/Garaventa Group as global competence centers for circulating ropeway systems such as gondolas and chairlifts as well as reversible aerial tramways and funicular railways. They have both played a major role in technical advances and achieved many milestones which have contributed to the breathtaking pace of development in the ropeway industry.



## MACHINE PROFILE

### DRM series

- Working area 50,000 x 8,000 mm (underwater cutting)
- Plasma rotator for weld preparation up to 50° with auto-calibration feature (ACTG®)
- Inkjet marking
- Operator platform with MMI console on the gantry

### 2x CombiCut series

- Working area 12,000 x 3,500 mm
- 2x Plasma rotator in parallel operation for weld preparation up to 50° + auto-calibration feature (ACTG®)
- Plasma marking
- Inkjet marking
- Automatic plate edge detection

### 2x DRM-PL series

- Working area 12,000 x 3,500 mm
- Plasma rotator for weld preparation up to 50° with auto-calibration feature (ACTG®)
- Inkjet marking
- Sand blasting unit for primer removal + Plasma marking
- Automatic plate edge detection

Meyer Turku Oy is one of the leading European shipbuilding companies. The company provides state-of-the-art technology solutions, advanced construction processes and cutting-edge innovations for cruise operators and other ship owners. Meyer Turku specializes in building cruise ships, car-passenger ferries and special vessels. Over the years the shipyard has built more than 1,300 new ships for customers around the world.



## MACHINE PROFILE

### MG series (Russia)

- Working area 15,000 x 3,500 mm
- Plasma rotator for weld preparation up to 50° with auto-calibration feature (ACTG®)

### MG series (Germany)

- Working area 24,000 x 5,000 mm
- Cutting of domes Ø 300 – 4,000 mm up to a height of 1,000 mm

### 1. gantry

- Plasma rotator for weld preparation up to 50° with auto-calibration feature (ACTG®)
- Console for manual oxyfuel torch

### 2. gantry

- Plasma rotator for weld preparation up to 50° with auto-calibration feature (ACTG®)
- 2D oxyfuel
- Console for manual oxyfuel torch
- 3D scanner + mScan technology for compensation of the production-related deviation of dome shape by adjusting the generated cutting paths according to the true scanned shape of dome

### CombiCut series (Germany)

- Working area 24,000 x 3,500 mm
- Plasma rotator for weld preparation up to 50° with auto-calibration feature (ACTG®)
- Automatic plate edge detection

The Bosch Group is a leading global supplier of technology and services in business sectors of Automotive Technology, Industrial Technology, Consumer Goods, and Energy and Building Technology. The Bosch Group comprises Robert Bosch GmbH and its more than 360 subsidiaries and regional companies in some 50 countries – including sales and service partners, Bosch's representation reaches out to 150 countries.



## MACHINE PROFILE

### ProfileCut series

- Cutting of H, I, U beams up to HEB 600 and a length of 13,500 mm
- Cutting of pipes Ø 30 – 500 mm up to a length of 13,500 mm
- 3D plasma rotator with tilting up to 120° for weld preparation on beams and pipes + auto-calibration feature (ACTG®)
- 3D scanner for scanning of beams

### MSF series

- Working area 3,000 x 1,500 mm
- 2D fiber laser – 2 kW
- Automatic shuttle table

Namaqua Engineering is a supplier of quality engineering products and services, including rigging and cranes, HDPE piping, robotic assembly and welding. Established in 1998 in Vredendal by Stokkies van Zyl, the company has since grown to one of the largest private employers in the area, providing jobs for more than 160 people. In its 23 years of service, Namaqua Engineering have successfully accomplished over 140 projects.



## MACHINE PROFILE

### 3x MG series

- Working area 27,000 x 3,500 mm
- Plasma rotator for weld preparation up to 45°
- Inkjet marking
- Automatic plate edge detection

### MG series

- Working area 27,000 x 3,500 mm
- Plasma rotator for weld preparation up to 45° with tool adjustment station
- Inkjet marking
- Automatic plate edge detection

### MG series

- Working area 27,000 x 3,500 mm
- Plasma rotator for weld preparation up to 50° with auto-

calibration feature (ACTG®)

- Inkjet marking
- Automatic plate edge detection

### CombiCut series

- Working area 20,000 x 3,000 mm
- 2x 2D oxyfuel
- 2x G-multi station for stripe cutting with 3x 2D oxyfuel torches on each
- Inkjet marking

### CombiCut series

- Working area 9,000 x 3,000 mm
- 2D plasma
- 2D oxyfuel
- Inkjet marking

Royal IHC with its 52 locations worldwide is a reliable supplier of innovative and efficient equipment, vessels and services for the offshore, dredging and wet mining markets. With a history steeped in Dutch shipbuilding since the mid-17th century, Royal IHC's shipyards have in-depth knowledge and expertise of engineering and manufacturing high-performance integrated vessels and equipment and providing sustainable services.



## MACHINE PROFILE

### MG series (Switzerland)

- Working area 21,000 x 3,500 mm
- Plasma rotator for weld preparation up to 50° with auto-calibration feature (ACTG®)
- 2D plasma
- Drilling up to Ø 40 mm and tapping up to M33
- Inkjet marking

### CombiCut series (Slovakia)

- Working area 12,000 x 3,000 mm
- 6x 2D oxyfuel

The stürmsfs AG based in Goldach, Switzerland is an internationally operating steel processor with production sites in Switzerland, Austria and Slovakia. The company, which employs 270 people, is a steel trader and manufacturer in the steel, metal and alternative materials sectors. The roots of stürmsfs date back to 1835. In 2011, today's stürmsfs AG was created through the merger of the long-established companies Sturm AG and the Steel + Metal Division of SFS Locher AG.



## MACHINE PROFILE

### MG series

- Working area 3,000 x 3,000 mm
- 2x 2D plasma
- Automatic shuttle table

BRÜGGEN is the leading European supplier of swap systems for trucks and semi-trailers for goods transport by road that are supplied under the well-known brand KRONE. Founded in 1990, the company with two production sites in Germany is also a service provider for surface coating and operates one of the most modern coating plants in Europe.



## MACHINE PROFILE

### MSF Max series

- Working area for sheets 2x 20,000 x 3,000 mm, total effective length 41,000 mm
- Laser bevel head for weld preparation up to 45° with auto-calibration feature (ACTG®)
- 8 kW fiber laser source
- Mobile safety cabin with integrated laser source and control system

### 2x DRM-PL series

- Working area 20,500 x 20,500 mm
- Plasma rotator for weld preparation up to 45° with auto-calibration feature (ACTG®)
- Grinding unit for primer removal + 2x Plasma marking
- Automatic plate alignment
- Operator control booth on the gantry

Located in Saint-Nazaire on the Atlantic coast of France for 150 years, Chantiers de l'Atlantique is a shipbuilding company dedicated to maritime construction and fleet operating services. Thanks to the expertise of its staff and sub-contractor network and its modern production facilities, the company counts among the leaders in designing, building, assembling and commissioning highly complex ships and maritime installations.

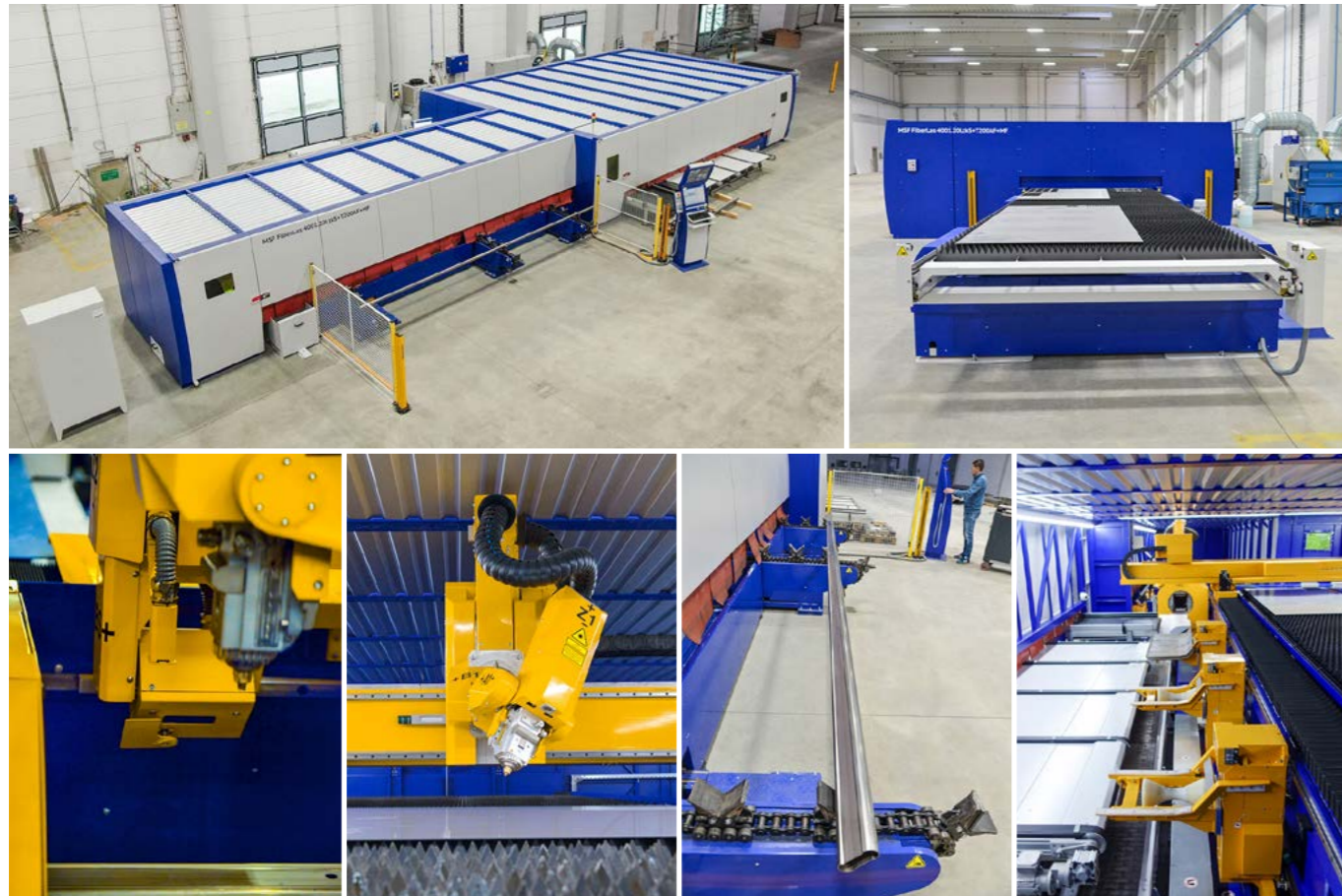


## MACHINE PROFILE

### CombiCut series

- Working area 25,000 x 4,500 mm
- Plasma rotator for weld preparation up to 50° with auto-calibration feature (ACTG®)
- Micro-percussion marking

Danstoker is a leading producer of biomass boiler technology. Over 80 years they have accumulated an in-depth knowledge of shell and tube boilers, water tube boilers and exhaust gas boilers in general. Development and production of high-performance oil and gas boilers for the energy sector has made Danstoker one of Europe's leading manufacturers of a broad range of shell and tube boilers with capacities ranging from 800 to 50,000 kW.



## MACHINE PROFILE

### MSF series

- Working area 4,000 x 2,000 mm
- Cutting of pipes Ø 20 – 200 mm and hollow sections up to a length of 6,000 mm
- Laser bevel head for weld preparation up to 45° with auto-calibration feature (ACTG®)
- 6 kW fiber laser source
- Scanner for Additional Beveling Process (ABP)
- Automatic plate edge detection
- Automatic shuttle table
- Automatic loading, feeding and unloading of pipes

The blend of technological expertise, many years of experience and personal advice is what makes the Lower Saxony company SEALPAC a unique supplier of comprehensive product packaging solutions for the food industry with freshness, optimal opening properties, hygiene and sustainability in the forefront.



## MACHINE PROFILE

### 3x MG series

- Working area 18,000 x 2,500 mm
- Plasma rotator for weld preparation up to 45° with auto-calibration feature (ACTG®)
- 2x 2D oxyfuel
- Drilling up to Ø 40 mm and tapping up to M24

The Russian division of the Texas (US) based National Oilwell Varco concern has been offering robust innovative solutions to answer the challenges of Russia's complex oil and gas industries since 1994. A huge selection of products comes across its three segments: NOV Rig Systems, NOV Wellbore Technologies and NOV Completion & Production Solutions.



## MACHINE PROFILE

### MG series

- Working area 24,000 x 3,500 mm (underwater cutting)
- Plasma rotator for weld preparation up to 50° with auto-calibration feature (ACTG®)
- 2D plasma
- Scanner for Additional Beveling Process (ABP)
- Micro-percussion marking



## MACHINE PROFILE

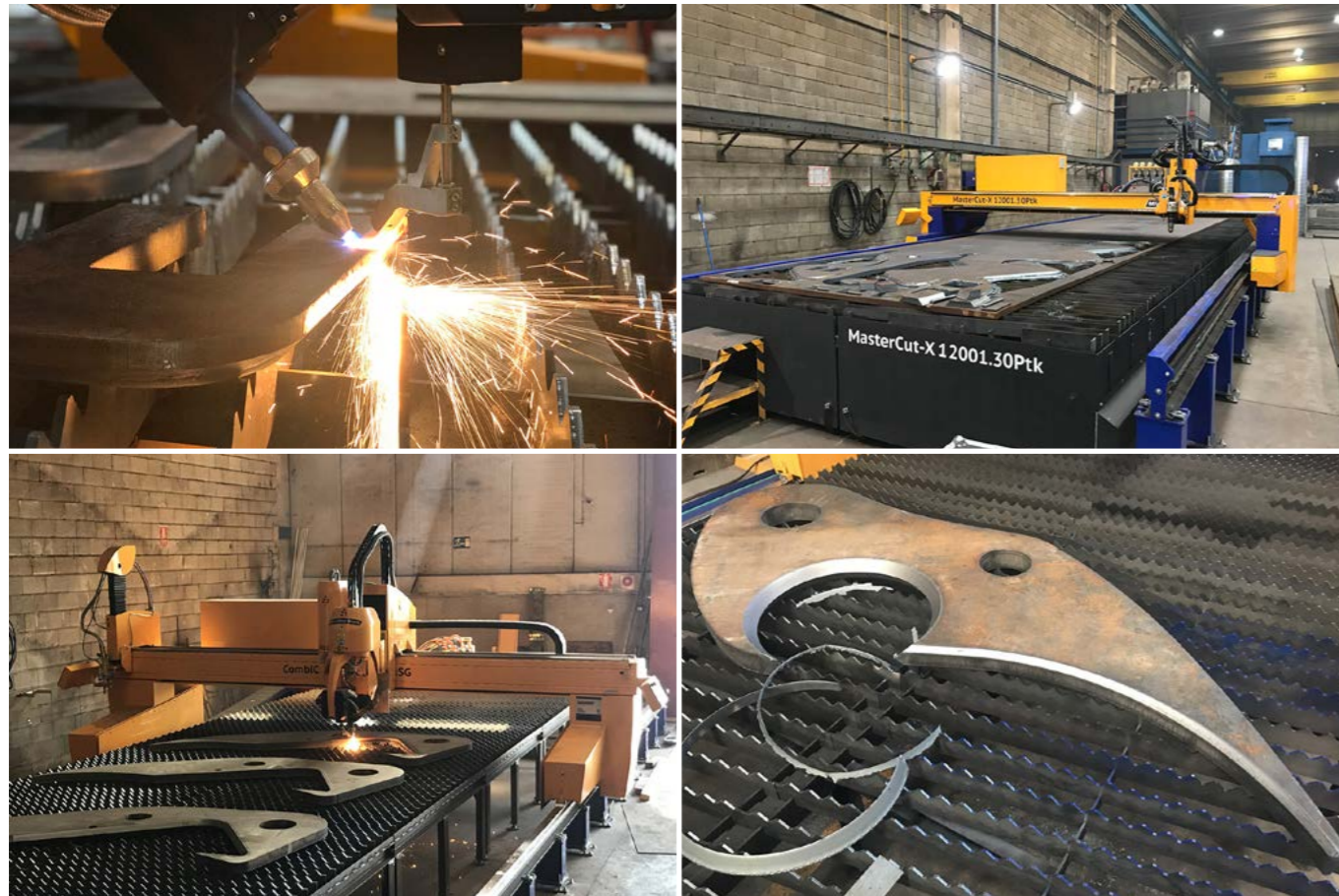
### CombiCut series

- Working area 12,000 x 3,000 mm
- 2D plasma
- 2D oxyfuel
- Drilling up to Ø 40 mm and tapping up to M33

thyssenkrupp Stahlkontor GmbH offers a comprehensive range of rolled steel products ranging from slabs, cobble plates, scaffoldings and heavy plates to coils and tubes. In addition to a wide materials selection the company offers also material processing services and customized deliveries. It is a recognized partner to major distributors and processors in Germany and abroad.

The Indian subsidiary of Zamil Steel Buildings Saudi Arabia is a major player in the manufacture and assembly of prefabricated buildings and structural steel. Since the start of commercial production in February 2008, Zamil Steel India has delivered more than 2,000 projects with more than 15,000 buildings and an area of approximately 8 million square kilometers including petrochemical project structures, power plant structures, aircraft hangars and many more.





## MACHINE PROFILE

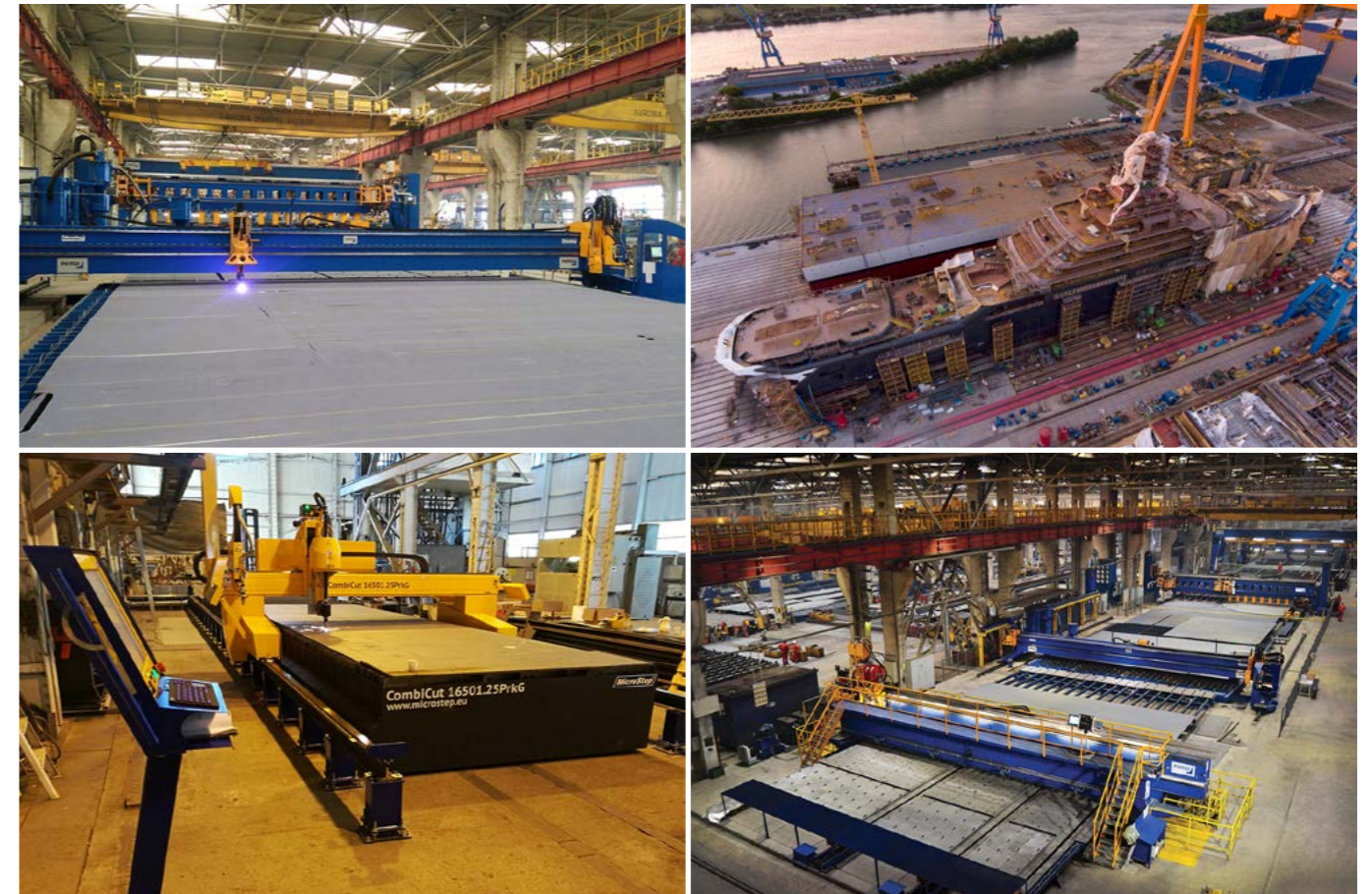
### MasterCut series

- Working area 12,000 x 3,000 mm
- Plasma bevel head with auto-calibration feature (ACTG®)

### CombiCut series

- Working area 12,000 x 3,000 mm
- Oxyfuel rotator with auto-calibration feature (ACTG®)
- Scanner for Additional Beveling Process (ABP)
- 2D oxyfuel

Solintal is a leading Spanish company in the design, manufacturing and supply of comprehensive tools for earthmoving and mining machinery as well as solutions for energy, engineering and recycling sectors. With facilities covering over 16,000 m<sup>2</sup>, Solintal has gained recognition for being a modern company with philosophy based on innovation, improving of its services and adopting a personal approach towards its customers.



## MACHINE PROFILE

### CombiCut series (Norway)

- Working area 16,500 x 2,500 mm
- Plasma rotator for weld preparation up to 50° with auto-calibration feature (ACTG®)
- 2D oxyfuel

### DRM-PL series (Romania)

- Working area 15,500 x 12,500 mm
- Plasma rotator for weld preparation up to 50° with auto-calibration feature (ACTG®)
- Inkjet marking
- Sand blasting unit for primer removal + Plasma marking
- Automatic plate edge detection
- Operator control booth on the gantry

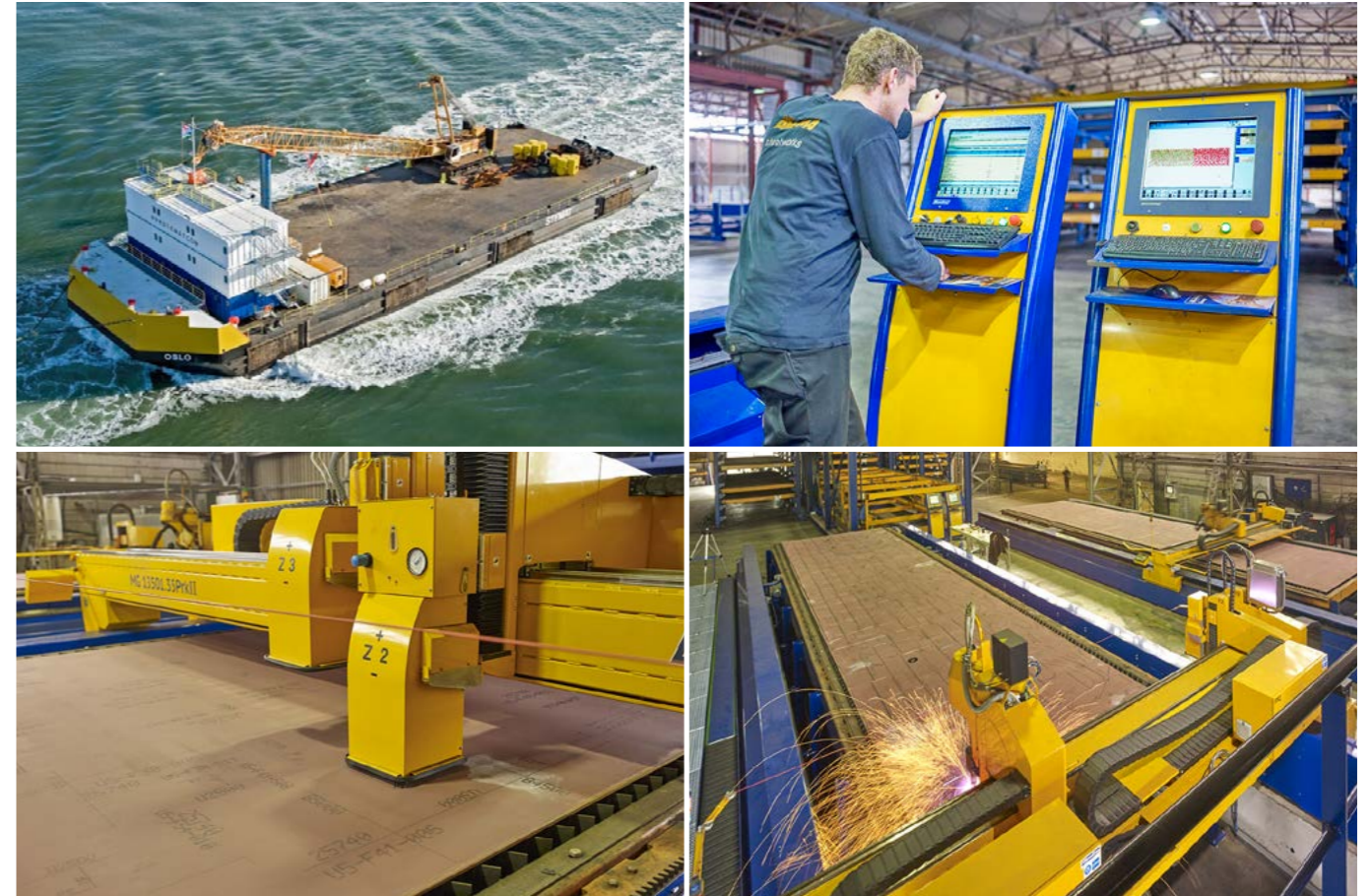
VARD is one of the major global designers and shipbuilders of specialized vessels. Headquartered in Norway and with approximately 8,200 employees, the company operates shipbuilding facilities in Norway, Romania, Brazil and Vietnam. VARD develops power and automation systems, deck handling equipment, and vessel accommodation solutions, and provides design and engineering services to the global maritime industry.



## MACHINE PROFILE

### ProfileCut series

- Fully automatic beam cutting line
- Cutting of H, I, U, L beams with size range HE120A – HE450A and a length up to 12,000 mm
- 3D plasma rotator with tilting up to 120° for weld preparation on beams and pipes + auto-calibration feature (ACTG®)
- 3D scanner for scanning of beams
- Automatic loading, feeding and unloading of beams



## MACHINE PROFILE

### MG series

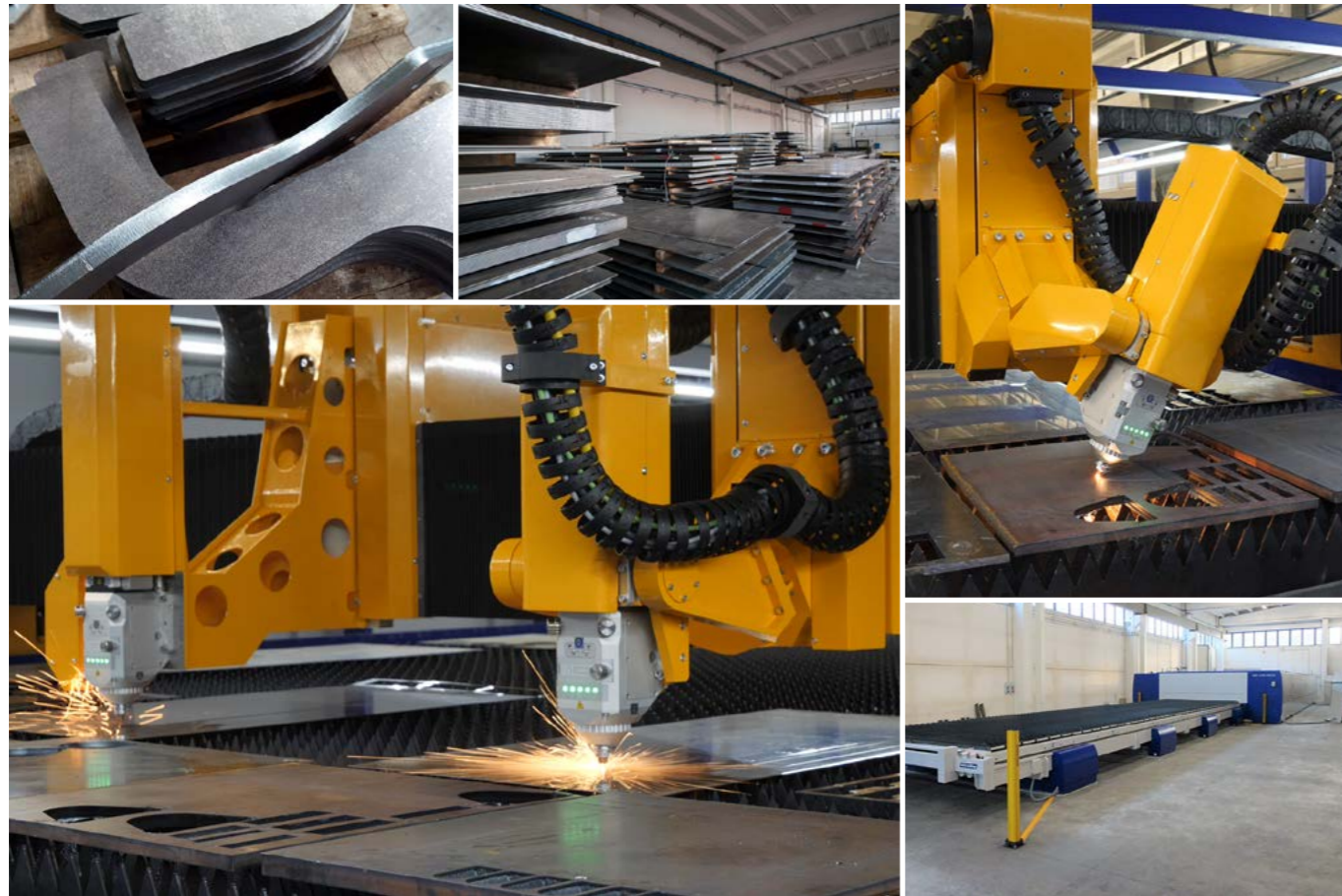
- Working area 13,500 x 3,500 mm
- Plasma rotator for weld preparation up to 45° with auto-calibration feature (ACTG®)
- Inkjet marking

### MG series

- Working area 13,500 x 3,500 mm
- Plasma rotator for weld preparation up to 45° with auto-calibration feature (ACTG®)
- 2x Inkjet marking

HEM (of Hongxun Elevator Accessories Group) owns 4 production centers and has more than 1,100 employees. The enterprise is highly-technology-oriented and keen to invest in advanced equipment. The company was founded in 1979 and over time became a strong supplier of many famous elevator companies, such as HITACHI, OTIS, FUJI and others.

Neptune Shipyards BV is a maritime service provider specialized in workboats for the offshore and dredging markets. The services consist of building, repair, refit, maintenance and charter. The company offers a broad range of products and services in the shipbuilding and ship-trading sector including tugboats, specialized workboats, multipurpose pusher tugs, crew boats, survey boats and pontoons, which they deliver all over the world. The shipyards cuts its own steel components for the hulls, with enormous precision and speed.



## MACHINE PROFILE

### MSF series

- Working area 12,000 x 2,500 mm
- 2x 2D fiber laser – 4 kW
- Automatic shuttle table

### MSF series

- Working area 14,000 x 3,000 mm
- Laser bevel head for weld preparation up to 45° with autocalibration feature (ACTG®) + 10 kW fiber laser source
- 2D fiber laser – 6 kW
- Automatic plate edge detection
- Automatic shuttle table

### MG series

- Working area 15,000 x 3,000 mm
- Plasma rotator for weld preparation up to 50° with auto-calibration feature (ACTG®)
- Drilling up to Ø 40 mm and tapping up to M33

The ISO 9001:2008 certified company has been operating for 20 years as a service center for processing of sheet metal – the competences include sub-supply of products from mild steel, stainless steel or electro-galvanized steel, produced by means of laser cutting, plasma cutting, punching and bending. CACCIN's modern 5,000 m<sup>2</sup> production area holds equipment able to process sheet metals with sizes up to 14 x 3 m and thicknesses up to 30 mm.



## MACHINE PROFILE

### DRM series

- Working area 7,500 x 3,000 mm
- Plasma rotator for weld preparation with auto-calibration feature (ACTG®)
- Drilling up to Ø 40 mm and tapping up to M33 with a strengthened construction for drilling into Hardox
- 2x 2D oxyfuel

Damatech is a steel service center specialized in pre-hardened steel. It has had a strategic partnership with SSAB for many years and is a Toolox and Hardox Wearparts partner. The company has many fully automatic band sawing machines, a waterjet cutting machine and CNC machining centers. The investment into MicroStep's oxyfuel/plasma machine equipped with a drilling unit enabled the company to produce Hardox wear parts quickly and cost-effectively.



**MACHINE PROFILE**

**ProfileCut series**

- Working area for sheets 12,000 x 4,500 mm
- Cutting of H, I, U beams up to HEB 1000 and a length of 12,000 mm
- Cutting of pipes Ø 30 – 700 mm and hollow sections up to a length of 12,000 mm
- 3D plasma rotator with tilting up to 120° for weld preparation on beams, pipes and plates + auto-calibration feature (ACTG®)

INNERGY is a multinational company specializing in eco-friendly energy solutions. It consists of three divisions (Innergy Heavy Industries, Innergy Electric and Innergy Engineering), has three international headquarters (Spain, Chile and Japan) and has worked on more than 6,500 projects on 5 continents so far. At the Heavy Industries factory, the company produces everything from industrial burner boilers and biomass boilers to complete power generation plants.

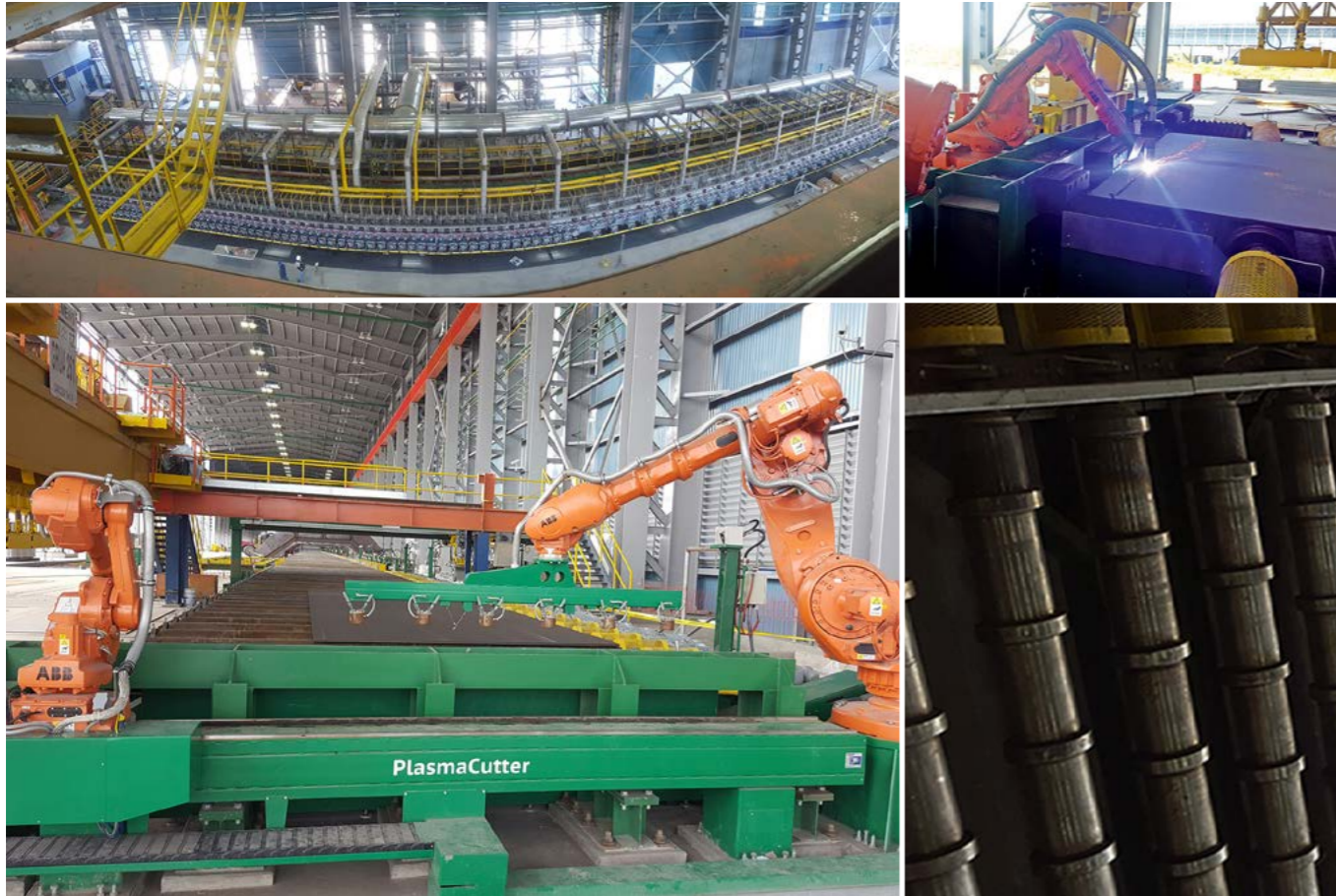


**MACHINE PROFILE**

**MG series**

- Working area 15,000 x 3,000 mm (underwater cutting)
- Plasma rotator for weld preparation up to 45° with auto-calibration feature (ACTG®)
- Waterjet rotator for weld preparation up to 45° with auto-calibration feature (ACTG®)
- 2D waterjet head with two nozzles
- Scanner for Additional Beveling Process (ABP)

Oy Flinkenberg Ab is a family-owned business established in the year 1921. The Flinkenberg Steel Service Center specializes in selling and processing steel plates. Production services consist of four cutting technologies – waterjet, laser, plasma and oxyfuel – as well as reprocessing and finishing. Processed parts are delivered directly to customer's welding and machining cells. The excellent combination of company's modern machinery and a production management system guarantees reliable, cost-efficient and high-quality services.



## MACHINE PROFILE

### PlasmaCutter + Robot

- Working area 500 x 3,600 mm
- Robotic arm with plasma torch for 2D plasma cutting
- Robotic arm with magnetic unloading system



## MACHINE PROFILE

### CombiCut series (Poland)

- Working area 16,500 x 3,500 mm
- Cutting of pipes  $\varnothing$  100 – 1,000 mm up to a length of 12,000 mm
- Cutting of domes up to  $\varnothing$  4,000 mm and a height of 1,200 mm
- Plasma rotator for weld preparation up to 45° with tool adjustment station

### CombiCut series (France)

- Working area 16,500 x 3,500 mm
- Cutting of pipes  $\varnothing$  100 – 1,000 mm up to a length of 12,000 mm
- Cutting of domes up to  $\varnothing$  4,000 mm and a height of 1,200 mm
- Plasma rotator for weld preparation up to 45° with auto-calibration feature (ACTG®)

Altos Hornos de México S.A.B. de C.V. (AHMSA) is Mexico's largest steel plant. AHMSA operates a diversified industrial chain from iron ore and coal extraction to the production of various steel grades and related products. It currently operates at an annual rate of close to 5 million tons of liquid steel. Including its mining-related subsidiaries, AHMSA has a workforce of 19,000 employees.

With more than 40 years of experience in the oil, gas, energy, chemical and pharmaceutical industries, AlliA is established as a major supplier for all types of pressure vessels, shell and tube heat exchangers and skidded units as well as turnkey industrial process installations – assembly of materials for chemical industry such as carbon steel, stainless steel, high and low-pressure pipes, special alloys, plastics and glass. The company is internationally active, with production sites in France and Poland.



## MACHINE PROFILE

### MSF-P series

- Working area 6,000 x 2,000 mm
- Conveyor-type cutting table + decoiler

#### 1. gantry

- 2D plasma
- Automatic plate edge detection

#### 2. gantry

- 2D plasma
- Automatic plate edge detection

The family-run company OFAS (Officine Favero Attrezzi Stampati) is specialising in the production and supply of spare parts for the agricultural and construction industries as well as gardening equipment. To meet the ever-growing demand for its products from Italian and international clients, the company (whose founding dates back to the 1950's) equipped its production with state-of-the-art machinery that enabled them to offer valuable, high-quality products, each step in the production of which has been carefully followed with attention, expertise and efficiency.

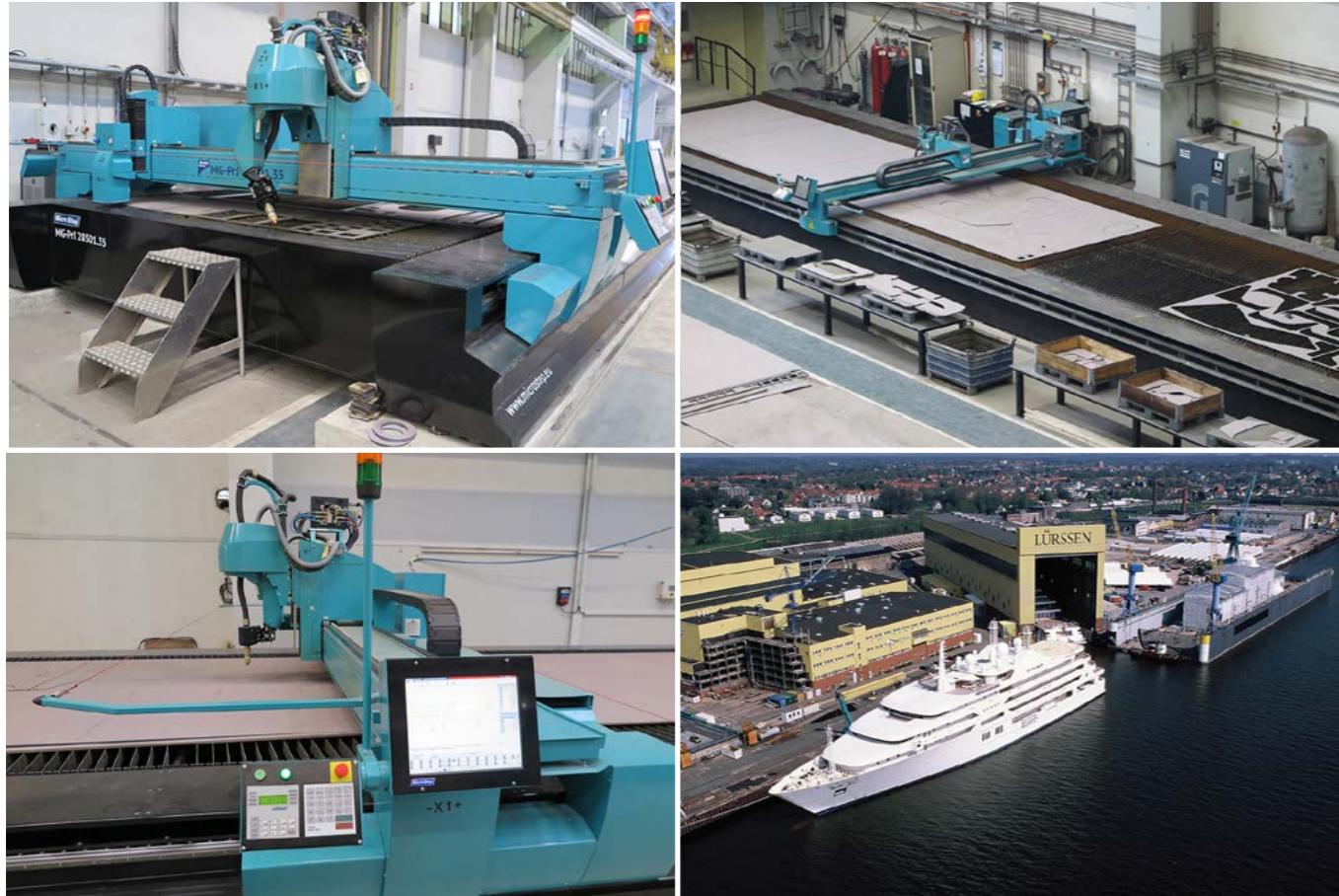


## MACHINE PROFILE

### MSF Compact series

- Working area 1,500 x 3,000 mm
- 2D fiber laser – 3 kW
- Manual telescopic grate

For 70 years, Ulrich Lippert GmbH & Co. KG has been a trademark for high-quality entrance architecture. The Berlin based company is renowned for their unique mailbox systems, door stations for building access and systems for building orientation that have been valued by architects, builders and urban planners for decades.



**MACHINE PROFILE**

**PLS series**

- Working area 28,500 x 3,500 mm
- Plasma rotator for weld preparation up to 45°
- Inkjet marking

**OxyCut series**

- Working area 12,000 x 3,000 mm
- 2D plasma
- 2D oxyfuel
- Inkjet marking

**MG series**

- Working area 28,500 x 3,500 mm
- Plasma rotator for weld preparation up to 50° with auto-calibration feature (ACTG®)
- Inkjet marking

**MG series**

- Working area 51,000 x 3,500 mm

1. gantry

- Plasma rotator for weld preparation up to 50° with auto-calibration feature (ACTG®)
- Inkjet marking

2. gantry

- Plasma rotator for weld preparation up to 50° with auto-calibration feature (ACTG®)
- Inkjet marking

For more than 130 years, Lürssen has been designing and building ships to comply with the highest quality standards of systematic, precise manufacturing. As a result, the most advanced watercrafts are delivered from various locations of the Lürssen Group worldwide – including large yachts, special ships or most up-to-date naval vessels. To satisfy the cutting requirements of high-end shipbuilding, 5 complex MicroStep machines were installed in Lürssen’s manufacturing sites at Lemwerder and Wolgast (Peene-Werft).



**MACHINE PROFILE**

**PLS series**

- Working area 27,000 x 3,000 mm
- 2D plasma
- 2D oxyfuel

**MG series**

- Working area 12,000 x 3,000 mm
- Plasma rotator for weld preparation up to 45° with auto-calibration feature (ACTG®)
- 2D plasma

**MG series**

- Working area 12,000 x 3,000 mm
- Plasma rotator for weld preparation up to 50° with auto-calibration feature (ACTG®)
- Scanner for Additional Beveling Process (ABP)
- Drilling up to Ø 40 mm and tapping up to M33

**MG series**

- Working area 12,000 x 6,000 mm
- 2 x 2D plasma

**OxyCut series**

- Working area 12,000 x 3,000 mm
- 4x G-multi station for stripe cutting with 3x 2D oxyfuel torches on each

**CombiCut series**

- Working area 18,000 x 3,000 mm
- Plasma rotator for weld preparation up to 50° with auto-calibration feature (ACTG®)
- 2D plasma

Klöckner Stahl- und Metallhandel GmbH is a German subsidiary of the global Klöckner & Co Group. Founded as early as 1906, Klöckner is the biggest producer-independent distributor of steel and metal in the combined markets of Europe and America, supplying more than 100,000 customers at over 140 locations in thirteen countries.



## MACHINE PROFILE

### DRM series

- Working area for sheets 6,000 x 2,500 mm
- Cutting of pipes  $\varnothing$  100 – 2,000 mm and hollow sections up to a length of 6,000 mm
- Cutting of H, I, U beams up to HEA 1000 and a length of 12,000 mm
- Cutting of domes  $\varnothing$  500 – 2,000 mm with a max. height of 600 mm
- 3D plasma rotator with tilting up to 120° for weld preparation on H-beams + auto-calibration feature (ACTG®)
- Oxyfuel rotator with auto-calibration feature (ACTG®)
- 3D scanner for beam & dome scanning and Additional Beveling Process (ABP)

Euro Gas Systems is a Romanian manufacturer of gas compressor packages. The ISO 9001 certified enterprise is an official packager/distributor for Ariel, 'Platinum Solution Provider' for Waukesha and OEM for Caterpillar and other major equipment brands, providing world-class compression to the European, Middle Eastern, African, Asian and CIS markets. Besides packaging of reciprocating gas compressors EGS's product portfolio covers gas-to-power solutions for the oil and gas industry, air-cooled heat exchangers (ACHE) and pressure vessels with PED and ASME certifications.



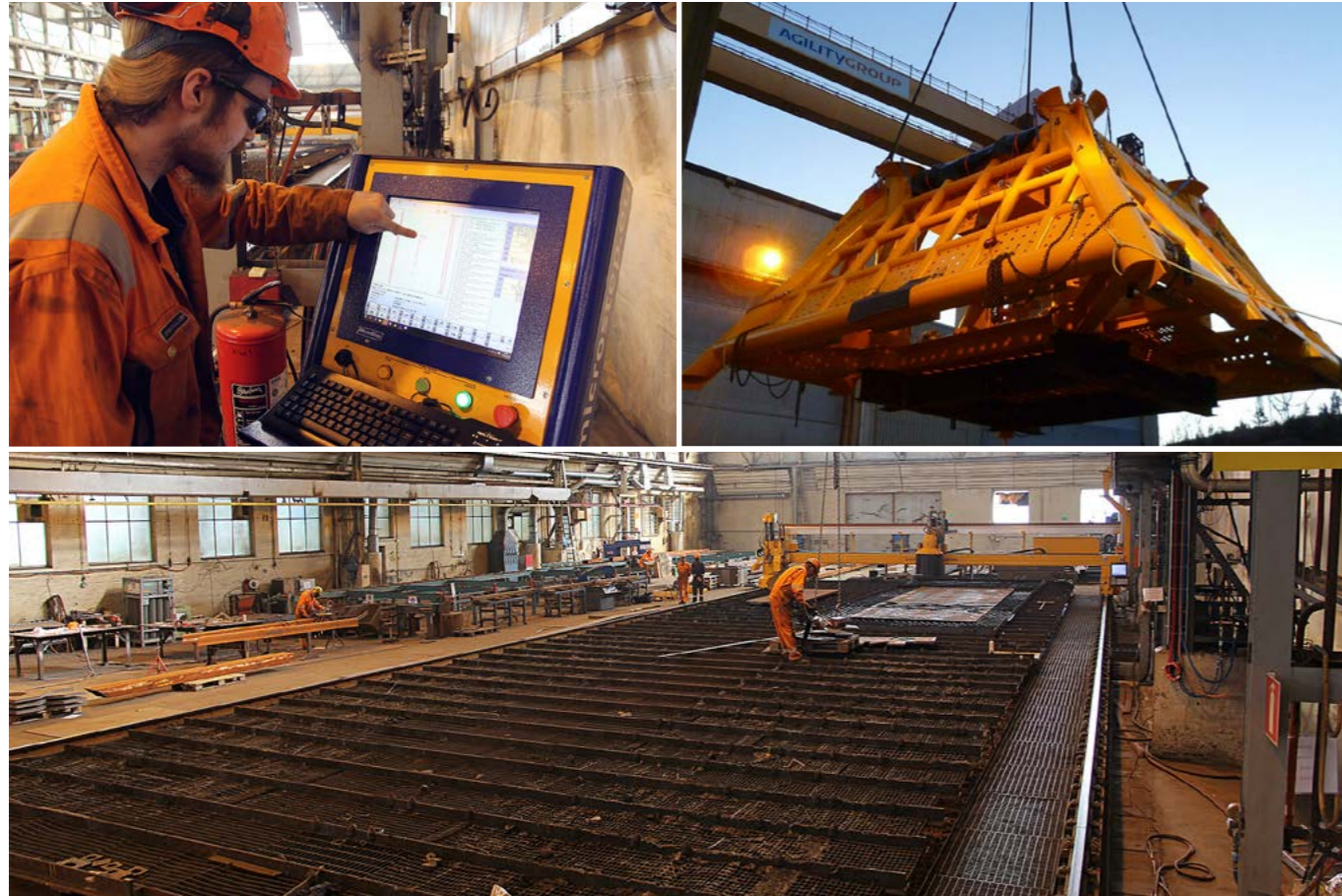
## MACHINE PROFILE

### MSF series

- Working area 6,000 x 2,000 mm
- Cutting of pipes  $\varnothing$  30 – 300 mm and hollow sections up to a length of 6,000 mm
- Laser rotator for weld preparation up to 45° with auto-calibration feature (ACTG®) + 6 kW fiber laser source
- Scanner for Additional Beveling Process (ABP)
- Automatic plate edge detection
- Automatic shuttle table

Rytz Industriebau AG takes care of planning and production of commercial and industrial buildings in the field of steel, glass, metal and façade constructions. The products and services of the company are trusted by customers from all over the world such as the furniture giant Ikea or the luxury hotel chain Hilton.





## MACHINE PROFILE

### CombiCut series

- Working area 24,000 x 6,000 mm
- Plasma rotator for weld preparation up to 45° with auto-calibration feature (ACTG®)
- 2x 2D oxyfuel
- Inkjet marking
- Punch marking with a small drilling unit



## MACHINE PROFILE

### MG series

- Working area 13,000 x 3,500 mm
- Oxyfuel rotator with auto-calibration feature (ACTG®)

### MG series

- Machine integrated with MSLoop system
- Working area 13,000 x 3,500 mm
- Plasma rotator for weld preparation up to 50° with auto-calibration feature (ACTG®)

### DRM-PL series

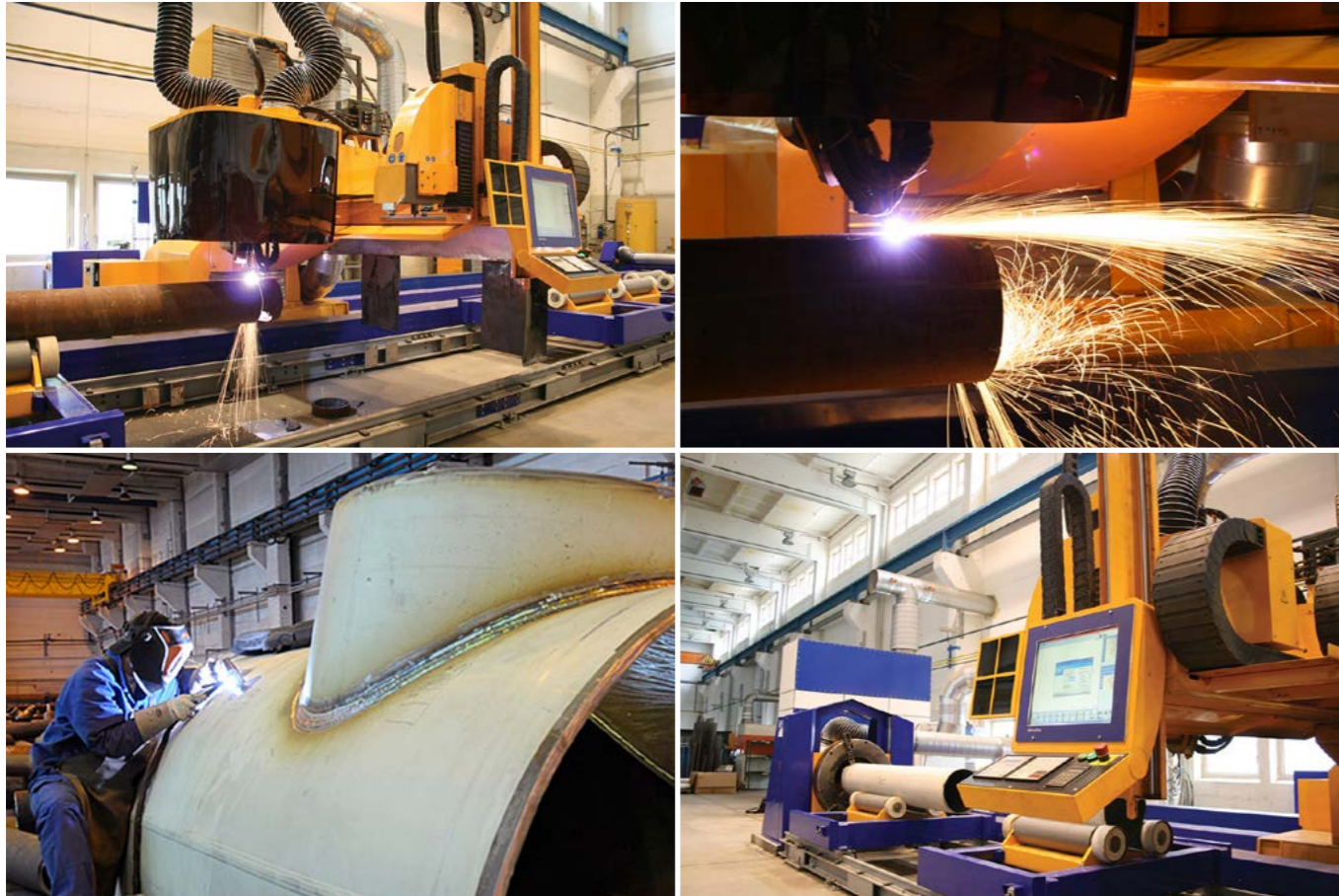
- Machine integrated with MSLoop system
- Working area 13,000 x 3,500 mm
- Sand blasting unit for primer removal + Plasma marking
- Inkjet marker with barcode and data matrix marking feature

### MSLoop system

- Automated synchronized grate exchange system
- 3 grates with working area 13,000 x 3,500 mm each

Agility Subsea Fabrication is a world leading subsea fabricator based in Norway. Close to 200 employees represent the company's core competence, which is fabrication of subsea template and manifold systems, subsea processing systems and SURF structures.

Australian Naval Infrastructure Pty Ltd (ANI) is a nation-building commitment by the Government of Australia and sees the establishment of state-of-the-art infrastructure for the domestic manufacture of world class naval vessels.



## MACHINE PROFILE

### CPCut series

- Cutting of pipes Ø 100 – 1,500 mm up to a length of 12,000 mm
- 3D plasma rotator with tilting up to 90° for weld preparation on pipes up to 45°
- Micro-percussion marking of pipes

FINOW Rohrsysteme GmbH has a long tradition as a steel-processing business. The former Franz Seiffert AG company produces high-quality components for the construction of power plants as well as chemical and industrial plants. Core expertise of the company is inductive bending and welding of piping elements. Since 2007 the company is part of Kraftanlagen Gruppe.



## MACHINE PROFILE

Fully automatic sheet cutting line consisting of 8 cutting gantries, an automatic crane, 2 input wagons and 2 output shuttle systems

### 8x MG series

- Working area 24,000 x 3,000 mm
- Plasma rotator for weld preparation up to 45° with auto-calibration feature (ACTG®)
- Fully automatic sheet cutting line consisting of 8 cutting gantries, an automatic crane, 2 input wagons and 2 output shuttle systems
- Automatic plate edge detection

### 2x MG series

- Working area 24,000 x 3,000 mm
- Plasma rotator for weld preparation up to 45° with auto-calibration feature (ACTG®)
- Fully automatic sheet cutting line consisting of 8 cutting gantries, an automatic crane, 2 input wagons and 2 output shuttle systems

SUNWARD is one of the leading enterprises for earthmoving and excavation machinery in China, holding more than 1,000 patents, with export to over 100 countries worldwide. The core competencies of the company lay in underground engineering, excavation, rock drilling, mining, hydraulics and general aviation. The company's portfolio comprises of over 200 products in several industrial areas.



## MACHINE PROFILE

### CombiCut series

- Working area 24,000 x 3,000 mm

#### 1. gantry

- Plasma rotator for weld preparation up to 50° with auto-calibration feature (ACTG®)
- 2x 2D oxyfuel
- Drilling up to Ø 40 mm and tapping up to M33

#### 2. gantry

- 3x 2D oxyfuel
- Drilling up to Ø 40 mm and tapping up to M33
- Micro-percussion marking

Prinzing Brennschneidtechnik GmbH & Co. KG located in Gingen an der Fils in southwest of Germany specializes in the production of custom parts using plasma and oxyfuel cutting technologies. Annealing, sandblasting, edging and welding are all part of the extensive range of Prinzing's services that small locksmiths as well as large companies can rely on thanks to the company's speed and flexibility in manufacturing.



## MACHINE PROFILE

### AquaCut series

- Working area 3,000 x 2,000 mm
- 2D waterjet

### AquaCut series

- Working area 2,000 x 3,500 mm
- 2x 2D waterjet

### 3x AquaCut series

- Working area 1,200 x 2,500 mm
- 2D waterjet

### AquaCut series

- Working area 1,500 x 2,000 mm
- 2D waterjet

### AquaCut series

- Working area 1,500 x 2,000 mm
- 2x 2D waterjet

### AquaCut series

- Working area 6,000 x 3,000 mm
- 2x 2D waterjet

### AquaCut series

- Working area 6,000 x 3,500 mm
- 2x 2D waterjet

### AquaCut series

- Working area 6,000 x 2,500 mm
- 2x 2D waterjet

### AquaCut series

- Working area 1,500 x 2,500 mm
- 2x 2D waterjet

### AquaCut series

- Working area 2,000 x 3,000 mm
- 2x 2D waterjet

### AquaCut series

- Working area 2,000 x 3,000 mm
- 2x Waterjet rotator in parallel operation up to 45° with auto-calibration feature (ACTG®)

AWAC was established in 1990 with the aim of offering high quality waterjet job cutting as well as sales of cutting machines. Located in 4 sites across the Czech Republic, the company directly employs 75 people and another 30 in its subsidiary AB Jet s.r.o. The offered cutting range with thicknesses 0.1 – 250 mm reaches up to plate dimension 3 x 6 m with both 2D and 3D cutting. With its 19 machines, AWAC is the largest waterjet job center in Europe.



## MACHINE PROFILE

### MSF Pipe-T series

- Cutting of pipes Ø 26 – 220 mm and hollow sections up to a length of 3,000 mm
- Laser bevel head for weld preparation up to 45° with auto-calibration feature (ACTG®)
- Scanner for scanning of pipes and hollow sections
- 2 kW fiber laser source

Bosch Thermotechnology is the biggest producer of heating technologies in the world. The company offers solutions for room climate, domestic hot water and decentralized energy management requirements – their high efficient technologies and products, such as boilers and heat pumps use in many cases renewable energies and make a significant contribution to implementing the energy transition.



## MACHINE PROFILE

### PLS series

- Working area 9,000 x 2,500 mm
- 2D plasma
- Felt pen marking

### PLS series

- Working area 9,000 x 2,500 mm
- Cutting of pipes Ø 30 – 300 mm and hollow sections up to a length of 9,000 mm
- Plasma with 90° automatic tilting in Y axis

### MG series

- Working area 7,500 x 2,500 mm
- 2D plasma

- Drilling up to Ø 22 mm and tapping up to M16

### DRM series

- Cutting and trimming of domes Ø 500 – 3,200 mm up to a height of 760 mm
- 3D plasma rotator with tilting 90° for weld preparation on domes

### MasterCut series

- Working area 8,000 x 2,500 mm
- 2D plasma
- Special marking via felt pen

Feldbinder is one of the largest European manufacturers of special vehicles in the commercial vehicle industry. Founded in 1975, the company manufactures a variety of silo vehicles, truck tankers, freight cars and containers made of aluminum and stainless steel for the transport of liquid, granulated and powdery substances.

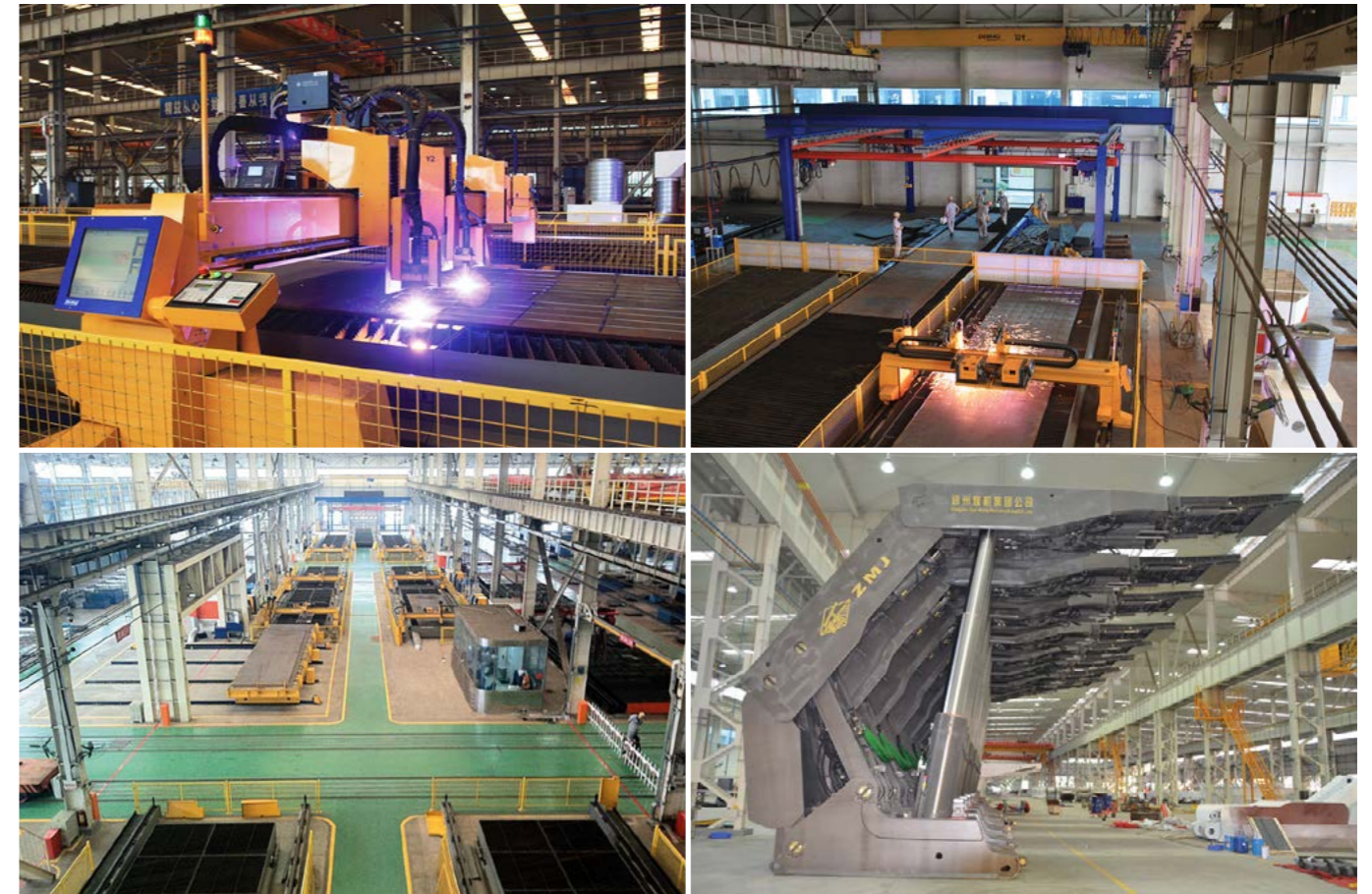


## MACHINE PROFILE

### DRM series

- Working area for sheets 14,000 x 6,000 mm
- Cutting and trimming of domes Ø 500 – 5,500 mm with a max. height of 1,500 mm
- 3D plasma rotator with tilting up to 120° for weld preparation on domes and plates + auto-calibration feature (ACTG®)
- 3D scanner + mScan technology for compensation of the production-related deviation of dome shape by adjusting the generated cutting paths according to the true scanned shape of dome
- Micro-percussion marking

Being a specialist for domes and special pressed parts, Slawinski & Co. GmbH has been supplying tailored solutions for small businesses as well as global corporations for more than 100 years. The company relies on its long-standing experience and innovative production machinery. Each supplied dished end is a precisely manufactured original that finds its application in nuclear power plant construction or in transport of chemical liquids.



## MACHINE PROFILE

Fully automatic sheet cutting line consisting of 8 cutting gantries, an automatic crane, an input wagon and 2 output conveyors

### 4x CombiCut series

- Working area 28,000 x 3,000 mm
- 2x 2D plasma
- Inkjet marking
- Automatic plate edge detection

### 2x CombiCut series

- Working area 28,000 x 3,000 mm

Each machine has two gantries with:

- 2x 2D plasma

- Inkjet marking
- Automatic plate edge detection

### CombiCut series

- Working area 28,000 x 7,000 mm
- 2x 2D plasma

### MG series

- Working area for sheets 2x 12,600 x 2,800 mm
- Plasma rotator for weld preparation up to 50° with auto-calibration feature (ACTG®)
- 2D plasma
- Scanner for Additional Beveling Process (ABP)

The 1958 established state-owned company ZMJ is China's leading manufacturer of coal mining and excavating equipment with a domestic market share of over 45%. As one of the few manufacturers in China the company is able to produce 3 of the 4 components of a complete coal mining system: hydraulic roof supports, armored-face conveyors and roadheaders. ZMJ's client base includes the biggest names among Chinese coal mining companies as well as foreign companies.



## MACHINE PROFILE

### MSF series

- Working area 12,000 x 3,000 mm
- Laser bevel head for weld preparation up to 45° with auto-calibration feature (ACTG®)
- 2D fiber laser
- 6 kW fiber laser source
- Automatic shuttle table

### MSF Max series

- Working area 12,000 x 3,000 mm with flexible working length in the range 6,000 – 12,000 mm
- Laser bevel head for weld preparation up to 45° with auto-calibration feature (ACTG®) + 8 kW fiber laser source
- 2D fiber laser – 6 kW
- Mobile telescopic safety cabin with integrated laser sources and control system

### MG series

- Working area 12,000 x 3,000 mm
- Plasma rotator for weld preparation up to 50° with auto-calibration feature (ACTG®)
- Scanner for Additional Beveling Process (ABP)
- Inkjet marking

ADQ is the Italian leader in distribution and pre-processing of heavy plates and coils in high quality steel grades for a great variety of industrial applications. Thanks to the long-established relationships with some of the main European steel producers, ADQ can supply a complete and up-to-date range of plates in commercial sizes or pre-processed according to customer's request including quality and production certificates.



## MACHINE PROFILE

### MG series

- Working area 12,000 x 3,500 mm
- Cutting of domes Ø 500 – 3,500 mm with a max. height of 950 mm
- Plasma rotator for weld preparation up to 50° with auto-calibration feature (ACTG®)
- 3D scanner + mScan technology for compensation of the production-related deviation of dome shape by adjusting the generated cutting paths according to the true scanned shape of dome

GEA is one of the largest suppliers for the food processing industry and a wide range of other industries. The international technology group focuses on process technology, components and sustainable energy solutions for sophisticated production processes in various end-user markets. The GEA Brewery Systems GmbH takes care of the brewing technology and covers the complete brewing process – from the mill to the valve manifold of the bright beer tanks.



## MACHINE PROFILE

### DRM series

- Working area 3,500 x 7,000 mm
- Cutting and trimming of domes Ø 500 – 5,500 mm with a max. height 1,500 mm
- 3D plasma rotator with tilting up to 120° for weld preparation on domes + auto-calibration feature (ACTG®)
- 3D scanner + mScan technology for compensation of the production-related deviation of dome shape by adjusting the generated cutting paths according to the true scanned shape of dome

### MG series

- Working area 12,000 x 3,500 mm
- Plasma rotator for weld preparation up to 50° with auto-calibration feature (ACTG®)

### CombiCut series

- Working area 12,000 x 4,000 mm
- Plasma rotator for weld preparation up to 50° with auto-calibration feature (ACTG®)

Bödenpresswerk Daaden GmbH, founded in 2001 in Daaden, Germany specializes in the production of high-quality cold-formed vessel heads and dished ends. Heads for storage containers, torispherical and semi-elliptical domes as well as special shapes from mild and stainless steels are being manufactured in Bödenpresswerk's three production areas.



## MACHINE PROFILE

### MicroCut series

- Working area 2,000 x 1,000 mm
- 2D plasma

Founded in 1963, Automobili Lamborghini is headquartered in Sant'Agata Bolognese in the north east of Italy. The company ranks among world's top-class super sports cars manufacturers. With more than 120 dealers worldwide, Automobili Lamborghini is building on a succession of its dynamic and elegant super sports cars.



**MACHINE PROFILE**

**2x MG series**

- Working area 24,000 x 3,000 mm
- Plasma rotator for weld preparation up to 45° with auto-calibration feature (ACTG®)

**MG series**

- Working area 14,000 x 3,500 mm
- 2x Plasma rotator for weld preparation up to 50° with auto-calibration feature (ACTG®)
- Automatic shuttle table

Founded in 1992, Zoomlion Heavy Industry Science & Technology Co., Ltd. is mainly engaged in developing and manufacturing major high-tech equipment in the areas of engineering industry and agricultural industry. With more than 20 years of innovation and development, the company is now a global enterprise possessing 10 major categories and 56 product lines, as well as nearly 600 leading products. Zoomlion is the first Chinese construction machinery company to be listed on both Shenzhen and Hong Kong stock exchanges.



**MACHINE PROFILE**

**PLS series**

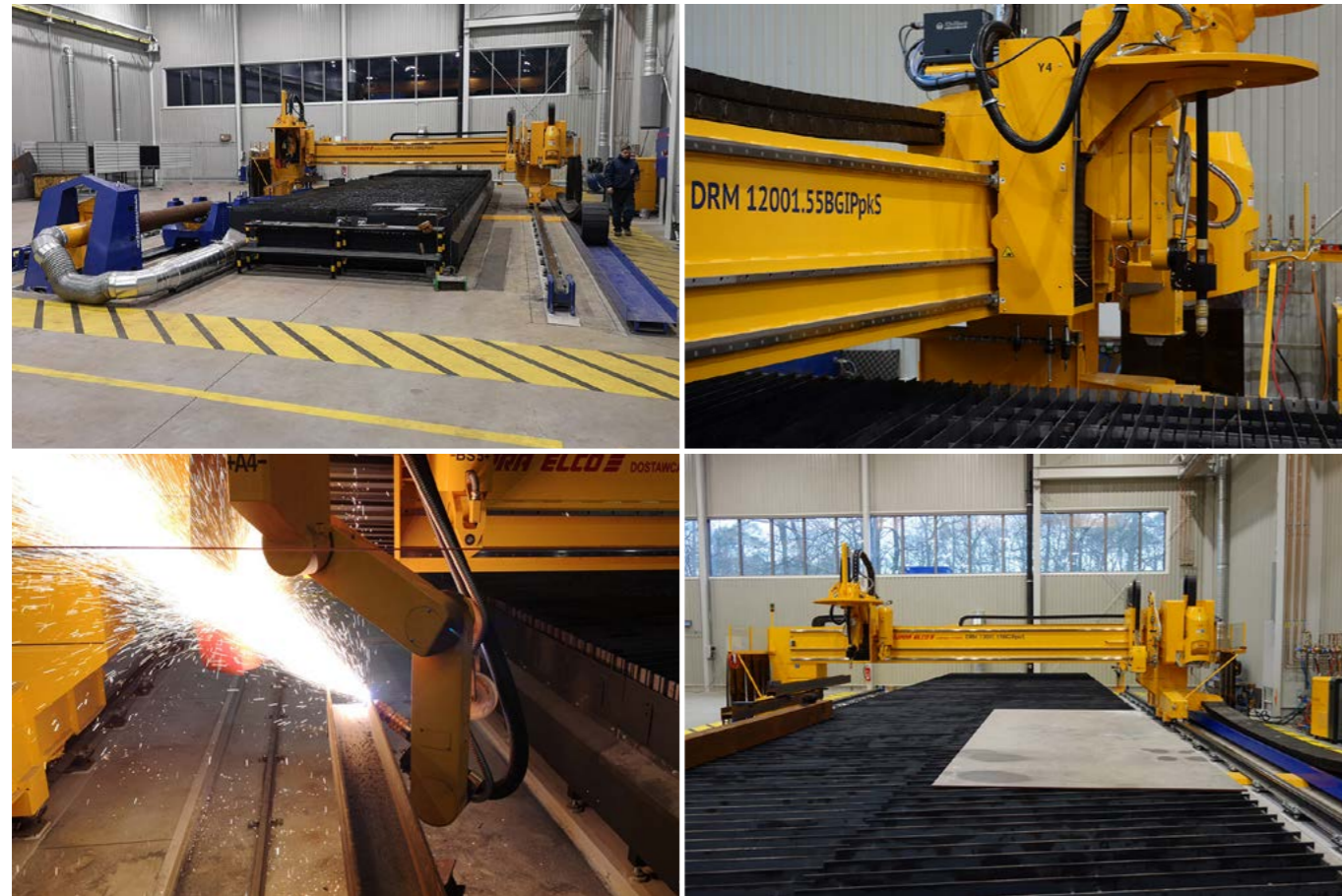
- Working area 28,500 x 2,500 mm
- 2x 2D plasma
- Inkjet marking

**PLS series**

- Working area 13,500 x 2,500 mm
- 2D plasma
- 2x 2D oxyfuel
- Inkjet marking

Caterpillar is the world's leading manufacturer of construction and mining equipment, diesel and natural gas engines, industrial gas turbines and diesel-electric locomotives and also a leading services provider. The company's plant in Tosno was established in 2000. It specializes in the production of heavy machinery components and employs more than 700 highly qualified specialists. Caterpillar Tosno LLC is the first company in Russia certified to Class A.





## MACHINE PROFILE

### EasyCut Series

- Working area 12,000 x 3,000 mm
- 2D plasma
- 2x 2D oxyfuel

### DRM Series

- Working area for sheets 12,000 x 3,000 mm
- Cutting of pipes  $\varnothing$  100 – 1000 mm and hollow sections up to length of 12,000 mm
- Cutting of H, I, U beams up to HEB 1000 and a length of 12,000 mm
- 3D plasma rotator with tilting up to 120° for weld preparation on H-beams + auto-calibration feature (ACTG®)
- 3D scanner for beam scanning and Additional Beveling Process (ABP)
- Inkjet marking
- 2D oxyfuel
- Drilling up to  $\varnothing$  40 mm and tapping up to M33

GOTECH's main field of operations includes upgrading, construction and overhauls of power and industrial equipment as well as industrial construction services and building turnkey industrial plants. The company is also focused on steel structures, process and power systems, Industrial and gas systems, pipelines, environmental systems, Installing incineration plants, flue gas desulphurisation and denitrification, flue gas cleaning and boiler installation.



## MACHINE PROFILE

### MSF Compact series

- Working area 1,000 x 1,500 mm
- 2D fiber laser – 2 kW

Salzgitter Mannesmann Forschung GmbH is the main research company of the Salzgitter Group. With around 280 employees it is one of the leading European research institutions in steel sector. In addition to industrial contracts for development and description of metallic materials and composites the company is also conducting failure and damage analysis using accredited test laboratories.



## MACHINE PROFILE

### MG series (Netherlands)

- Working area 18,000 x 3,000 mm
- Plasma rotator for weld preparation up to 45° with tool adjustment station
- 2D oxyfuel

### MG series (Netherlands)

- Working area 18,000 x 3,000 mm
- Plasma rotator for weld preparation up to 45° with auto-calibration feature (ACTG®)
- Inkjet marking

### MG series (China)

- Working area 18,000 x 3,000 mm
- Plasma rotator for weld preparation up to 45°

with auto-calibration feature (ACTG®)

### MG series (Romania)

- Working area 12,000 x 3,000 mm
- Plasma rotator for weld preparation up to 45° with auto-calibration feature (ACTG®)
- Inkjet marking

### MicroMill series (Romania)

- Working area 3,000 x 1,500 mm
- 2.5D routing

The globally operating shipyard group Damen started out in 1927 as a family-owned company amongst the shipbuilding community on the River Merwede in the Netherlands. Today, more than 6,000 vessels later, the enterprise operates over 30 yards and Service Hubs all over the world, covering all areas from newly built vessels through ship repair and conversion to supply of marine components and related services.



## MACHINE PROFILE

### AquaCut series + Robot

- Fully automated working cell
- Working area: 4 cutting zones with rotary hydraulic holders for positioning of products
- 2D waterjet cutting simultaneously with 2 tool stations
- Robotic manipulator
- Automatic waste removal via conveyor in water tank
- Rinsing chamber for washing of products
- Drying chamber for drying of products by air blow
- 50 HP high pressure pump

The German-based sanitary and tableware producer Villeroy & Boch is a highly innovative company with representation in over 125 countries. Since its foundation in 1748, the company's strong roots in European culture have shaped the development of a premium brand that is now a household name all over the world. Mondial SA serves as the company's production facility in Romania.



**WACKER  
NEUSON**

Wacker Neuson Kragujevac d.o.o. (Serbia)  
Construction Equipment & Machinery



## MACHINE PROFILE

### MG series

- Working area 6,000 x 3,000 mm
- Cutting of pipes Ø 30 – 300 mm and hollow sections up to a length of 6,000 mm
- Plasma rotator for weld preparation up to 50° with auto-calibration feature (ACTG®)
- 2D oxyfuel
- Drilling up to Ø 30 mm and tapping up to M20

Wacker Neuson is one of the leading international manufacturers of concrete technology, compaction equipment, construction site technology and compact construction machinery with more than 40 subsidiaries, 140 sales and service centers and 12,000 sales and service points worldwide.

**KONECRANES®**  
Lifting Businesses™

ZAO Konecranes (Ukraine)  
Crane & Lifting Systems



## MACHINE PROFILE

### MG series

- Working area 24,000 x 3,500 mm
- Plasma rotator for weld preparation up to 50° with auto-calibration feature (ACTG®)

As a part of the Konecranes world-leading group of Lifting Businesses, ZAO Konecranes is the leading producer of cranes and crane equipment in Eastern Europe and the CIS countries. The company specializes in manufacturing of bridge, gantry and special purpose cranes as well as manufacturing of lifting and handling equipment, production of metal constructions and wholesale industrial equipment.



## MACHINE PROFILE

### PLS series

- Working area 9,000 x 2,500 mm
- Plasma rotator for weld preparation up to 45°

### PLS series

- Working area 9,000 x 2,500 mm
- Plasma rotator for weld preparation up to 45°
- 2D oxyfuel

### CombiCut series

- Working area 12,000 x 3,000 mm
- 2D plasma
- 7x 2D oxyfuel

### 9x CombiCut series

- Working area 12,000 x 3,000 mm
- Plasma rotator for weld preparation

up to 50° with auto-calibration feature (ACTG®)

### 2x CombiCut series

- Working area 6,000 x 3,000 mm
- Plasma rotator for weld preparation up to 50° with auto-calibration feature (ACTG®)

### MasterCut series

- Working area 6,000 x 3,000 mm
- 2D plasma

### CombiCut series

- Working area 6,000 x 2,000 mm
- Plasma rotator for weld preparation up to 50° with auto-calibration feature (ACTG®)

### 2x CombiCut series

- Working area 6,000 x 3,000 mm
- 2D plasma

### CombiCut series

- Working area 12,000 x 3,000 mm
- 2D plasma

### CombiCut series

- Working area 6,000 x 3,000 mm
- 2D plasma
- Drilling up to Ø 40 mm and tapping up to M24

Tikhvin Freight Car Building Plant is a high-tech innovation enterprise that meets state-of-the-art criteria of transport machinery production. Car assembling and foundry engineering have been combined in an effective production tandem that provides high productivity and manufacturing flexibility. Extensive degree of automation, application of modern design solutions and energy-efficient technologies ensure TVSZ's production capacity of a level that is equal to leading global companies.



## MACHINE PROFILE

### DRM-PL series

- Working area 18,000 x 16,000 mm
- Oxyfuel rotator for weld preparation up to 50° with auto-calibration feature (ACTG®)
- Inkjet marking
- Sand blasting unit for primer removal + Plasma marking
- Operator platform with MMI console on the gantry

### MG series

- Working area 52,500 x 3,500 mm

### 1. gantry

- Plasma rotator for weld preparation up to 50° with auto-calibration feature (ACTG®)
- Inkjet marking

### 2. gantry

- Plasma rotator for weld preparation up to 50° with auto-calibration feature (ACTG®)
- Laser marking

### EasyCut series

- Working area 16,500 x 3,000 mm
- 4x 2D oxyfuel
- Plasma marking

German Naval Yards Kiel is specializing in the design and construction of naval vessels such as frigates, corvettes and patrol boats as well as in the construction of superyachts. The company combines know-how from more than 180 years of shipbuilding tradition and has a unique shipyard infrastructure with one of the largest dry docks in Europe in operation.



## MACHINE PROFILE

### MG series

- Working area 14,000 x 4,500 mm
- Plasma rotator for weld preparation up to 45° with auto-calibration feature (ACTG®)
- Micro-percussion marking
- 2D oxyfuel
- Automatic shuttle table (third party)

Engicon nv (Geldof) is a leading European supplier of integrated steel solutions for the storage, handling and processing of bulk liquids, solids and gasses. The company has a strong reputation in the realization of storage tank projects, pressure vessels, dry bulk storage and handling installations, and diverse, other engineered solutions that often require a combination of wide-ranging technical competencies.



## MACHINE PROFILE

### DRM-PL series

- Working area 15,000 x 13,000 mm
- Plasma rotator for weld preparation up to 45° with auto-calibration feature (ACTG®)
- Scanner for detection of weld seam position
- Inkjet marking
- Sand blasting unit for primer removal + Plasma marking
- Automatic plate alignment
- Operator platform with MMI console on the gantry

Irving Shipbuilding Inc. is one of the most advanced shipbuilders in North America. Headquartered in Halifax, Nova Scotia, the company specializes in the efficient construction, manufacture, conversion and maintenance of ships and offshore platforms. Irving Shipbuilding Inc. is a member of the J. D. Irving Limited Business Group, a family owned business with offices in Canada and the United States. As Canada's chosen shipbuilder, Irving Shipbuilding is also working for the Royal Canadian Navy.



## MACHINE PROFILE

### MG series + Robot

- Working area 12,000 x 3,000 mm
- Cutting of pipes Ø 100 – 2,000 mm up to a length of 12,000 mm
- Plasma rotator for weld preparation up to 50° with auto-calibration feature (ACTG®)
- 2D oxyfuel
- Robotic arm with oxyfuel technology for bevel cutting of pipes
- Laser scanner for measuring of the real shape of pipe



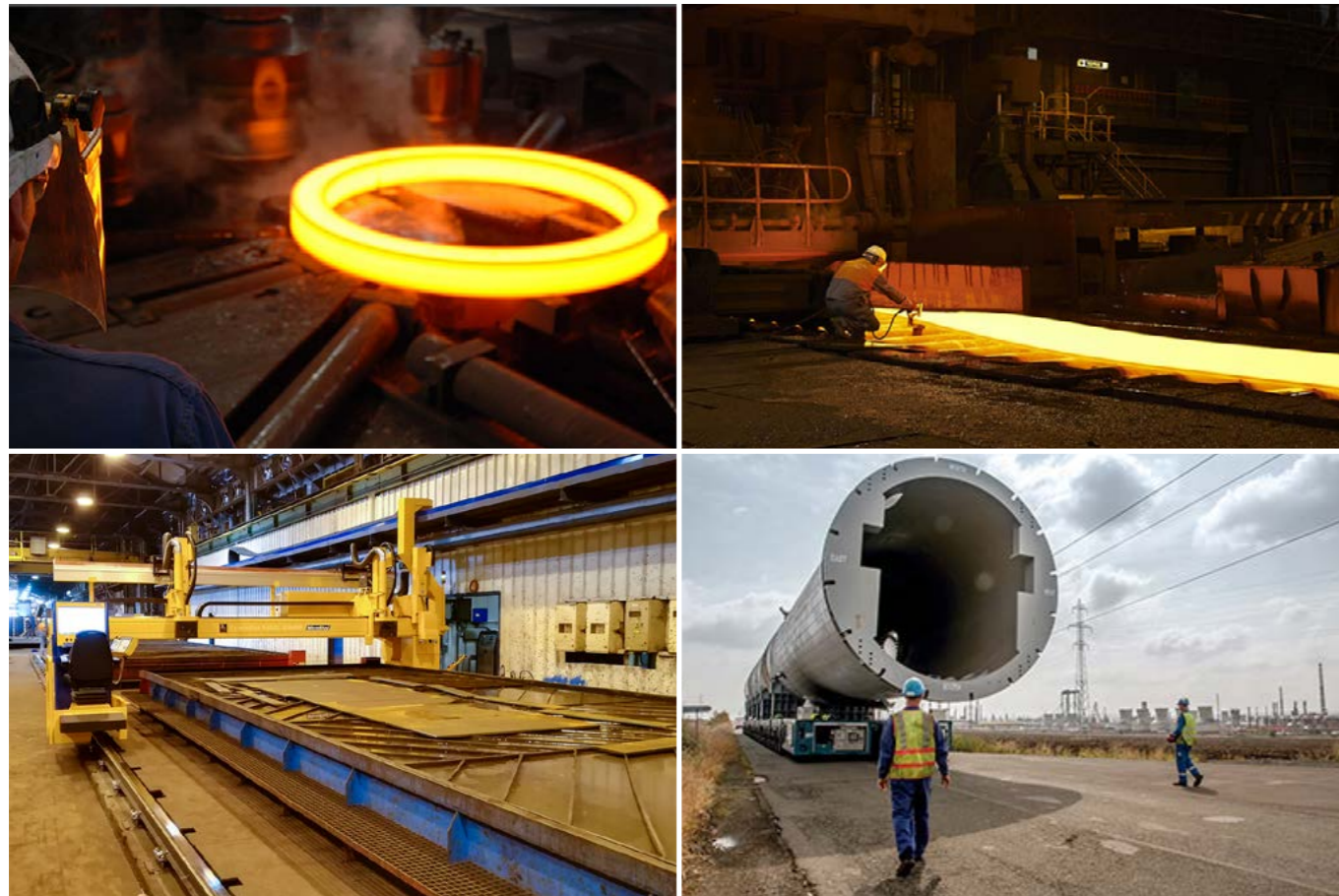
## MACHINE PROFILE

### CombiCut series

- Working area for sheets 15,000 x 2,500 mm
- Cutting of pipes Ø 30 – 1,000 mm and hollow sections up to a length of 12,000 mm
- Cutting and trimming of domes Ø 500 – 5,000 mm with a max. height 1,100 mm
- Plasma rotator for weld preparation up to 50° with auto-calibration feature (ACTG®)
- Oxyfuel rotator with auto-calibration feature (ACTG®)
- 3D scanner + mScan technology for compensation of the production-related deviation of dome shape by adjusting the generated cutting paths according to the true scanned shape of dome
- Drilling up to Ø 36 mm and tapping up to M33
- Additional Beveling Process (ABP)

Jan De Nul Group is a leading expert in dredging and marine construction activities, as well as in specialized services for the offshore industry of oil, gas and renewable energy. These core marine activities are further enhanced by Jan De Nul Group's in-house civil and environmental capabilities offering clients a complete package solution.

The Spanish metalworking company Caldererías Indálicas, established in 1993, offers all-round services including engineering, manufacturing, assembly, maintenance and repair of metal structures, boilers, pressure vessel equipment and industrial plants. With a team of over 450 employees, the company operates workshops and offices in Spain as well as a subsidiary in North Africa headquartered in Morocco.



## MACHINE PROFILE

### CombiCut series

- Working area 34,500 x 4,000 mm
- 2x 2D plasma
- Micro-percussion marking
- Automatic plate edge detection
- Operator platform with MMI console on the gantry



## MACHINE PROFILE

### PipeCut series

- Cutting of pipes  $\varnothing$  48 – 610 mm and hollow sections up to a length of 12,000 mm
- Cutting of domes up to  $\varnothing$  1,200 mm and a height of 350 mm
- Plasma rotator for weld preparation up to 45° with auto-calibration feature (ACTG®)

### 2x PipeCut series

- Cutting of pipes  $\varnothing$  48 – 700 mm and hollow sections up to a length of 12,000 mm
- Cutting of domes up to  $\varnothing$  1,600 mm and a height of 434 mm
- Plasma rotator for weld preparation up to 45° with auto-calibration feature (ACTG®)

Industeel, a French subsidiary of ArcelorMittal, is specialized in the production of hot rolled as well as forged steel plates, ingots and formed pieces with the largest dimension range worldwide. Producing carbon, low alloy and stainless steels and nickel-based alloys, Industeel offers a complete range of high-quality steel grades designed to meet the most severe customer specifications. Industeel covers 6 production facilities with a long tradition of metallurgical know-how and different product specialties.

Founded in 1991, Gree Electric Appliances Inc. is the world's largest manufacturer of air conditioning systems. The Chinese company is part of the Gree Group, which ranges from residential air conditioning and central air conditioning systems to air source water heaters, smartphones, home appliances and refrigerators. Small houses as well as large international projects such as the National Stadium of South Africa, or the Expo 2015 in Milan are air-conditioned using Gree's technology.



## MACHINE PROFILE

### DRM series

- Working area for sheets 6,000 x 3,000 mm
- Cutting of pipes Ø 100 – 1,500 mm and hollow sections up to a length of 6,000 mm
- Cutting of domes Ø 500 – 4,000 mm with a max. height of 1,100 mm
- 3D plasma rotator with tilting up to 120° for dome cutting + auto-calibration feature (ACTG®)
- 3D scanner for dome scanning and Additional Beveling Process (ABP)

Accessoires Tubes Chaudrones (ATC) Aulagner is a French manufacturer of high-end pressure vessels and boilers with materials such as nickel alloys, special stainless steels, zirconium, copper, titanium and aluminum. The industrial boiler-making SME specializes in equipment operating under high pressure (up to 600 bars) designed for environments prone to high-temperature induced corrosion. It supplies demanding sectors such as chemicals, petrochemicals, pharmaceuticals, armaments and nuclear.



## MACHINE PROFILE

### PLS series

- Working area 12,000 x 2,500 mm
- Plasma rotator for weld preparation up to 45°

### PLS series

- Working area 12,000 x 2,500 mm
- 2D plasma

### EasyCut series

- Working area 10,500 x 2,500 mm
- 2D plasma

### MSF series

- Working area 4,000 x 2,000 mm
- 2D fiber laser – 4 kW
- Automatic plate alignment
- Automatic shuttle table

Situated in a heart of Mpumalanga, South Africa, GK Steel actively services the mining and agricultural sectors. Business of the company is divided into two main sections: steel trading and steel services such as cutting, bending and rolling. GK Steel's effective distribution channels, knowledgeable staff and logistical services successfully cater to the steel needs of mines and fabricators both across South Africa and internationally.





## MACHINE PROFILE

### PLS series

- Working area 4,500 x 2,000 mm
- Cutting of pipes Ø 100 – 500 mm up to a length of 4,500 mm
- Plasma rotator for weld preparation up to 45°
- 2D oxyfuel

### AquaCut series

- Working area 6,000 x 3,000 mm
- Cutting of pipes Ø 30 – 500 mm up to a length of 5,000 mm
- 2D plasma
- Waterjet rotator up to 45° with auto-calibration feature (ACTG®)
- 2D waterjet

Striegel Maschinen- und Metallbau is a provider of high-pressure water jet cutting, plasma cutting, CNC turning and milling as well as welding of components and assemblies for a wide variety of industries such as pharmaceutical industry, food and beverage industry, tunnel technology or heavy engineering. The company's services reach from manufacturing of individual pieces to series of parts, design and production support.



## MACHINE PROFILE

### MG series (Belgium)

- Working area 27,000 x 4,000 mm

#### 1. gantry

- Plasma rotator for weld preparation up to 50° with auto-calibration feature (ACTG®)
- 2D plasma

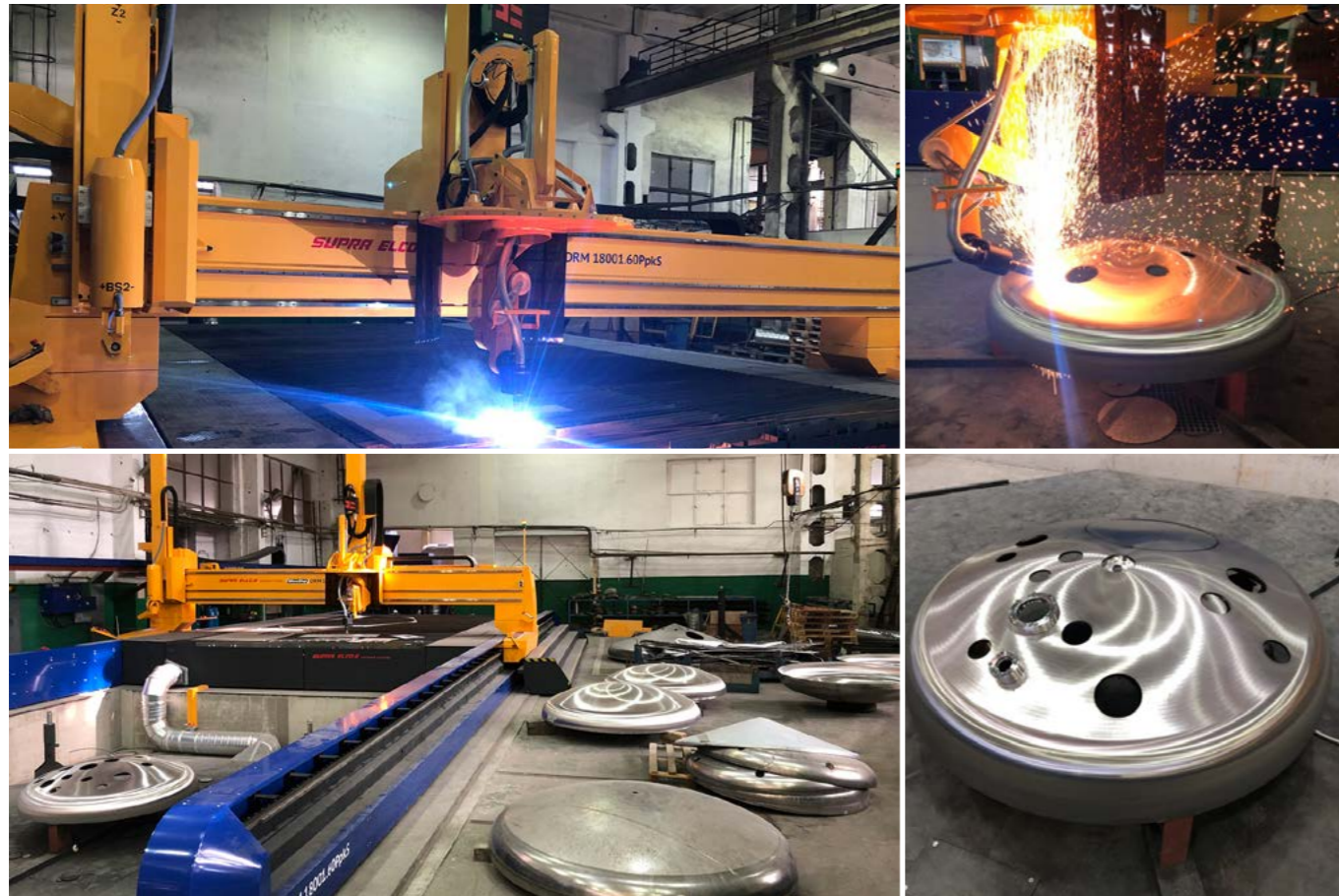
#### 2. gantry

- 3x 2D oxyfuel
- 2D plasma

### MG series (Poland)

- Working area 24,000 x 4,000 mm
- Plasma rotator for weld preparation up to 50° with auto-calibration feature (ACTG®)
- 4x 2D oxyfuel

Smulders (of Eiffage Group) is an international steel construction company with more than 900 employees working across different locations in Belgium, the Netherlands, the United Kingdom and Poland. The company is offering more than 50 years of experience in engineering, construction, supply and assembly of steel constructions for offshore oil & gas, offshore wind and civil engineering industries. Smulders is a member of the French conglomerate Eiffage Group.



## MACHINE PROFILE

### DRM series

- Working area for sheets 9,000 x 4,500 mm
- Cutting and trimming of domes Ø 500 – 4,500 mm with a max. height 1,500 mm
- 3D plasma rotator with tilting up to 120° for tank end cutting + auto-calibration feature (ACTG®)
- 3D scanner + mScan technology for compensation of the production-related deviation of dome shape by adjusting the generated cutting paths according to the true scanned shape of dome



## MACHINE PROFILE

### DRM series

- Working area 28,000 x 3,600 mm
- Drilling up to Ø 50 mm and tapping up to M30
- Inkjet marking

SCHWARTE JANSKY produces high-quality vehicles and measuring systems for processing of sensitive liquids. As a market and technological leader with over 75 years of experience, the company has been a pioneer in developing solutions for milk collection and logistics as well as products for transporting beer, sensitive liquids and disposal logistics. Schwarte offers a complete range of technical systems from vehicle construction, state-of-the-art plant engineering and data systems technology.

ZAO Kurganstalmost is Russia's leading enterprise in manufacturing of bridge steel constructions. With an annual output of 65,000 tons the company covers 25% of Russia's bridge construction market. The basic competitive advantage of the company is manufacturing of complex steel constructions for individual projects. Bridges manufactured at the plant in Kurgan can be found in cities from the Far East to Europe. The company participated in the construction of some of Russia's major sports halls and stadiums.



## MACHINE PROFILE

### MSF Series

- Working area 3,000 x 1,500 mm
- 2D fiber laser – 4 kW
- Automatic shuttle table
- MSLoad for automatic loading/unloading of sheets and cut parts



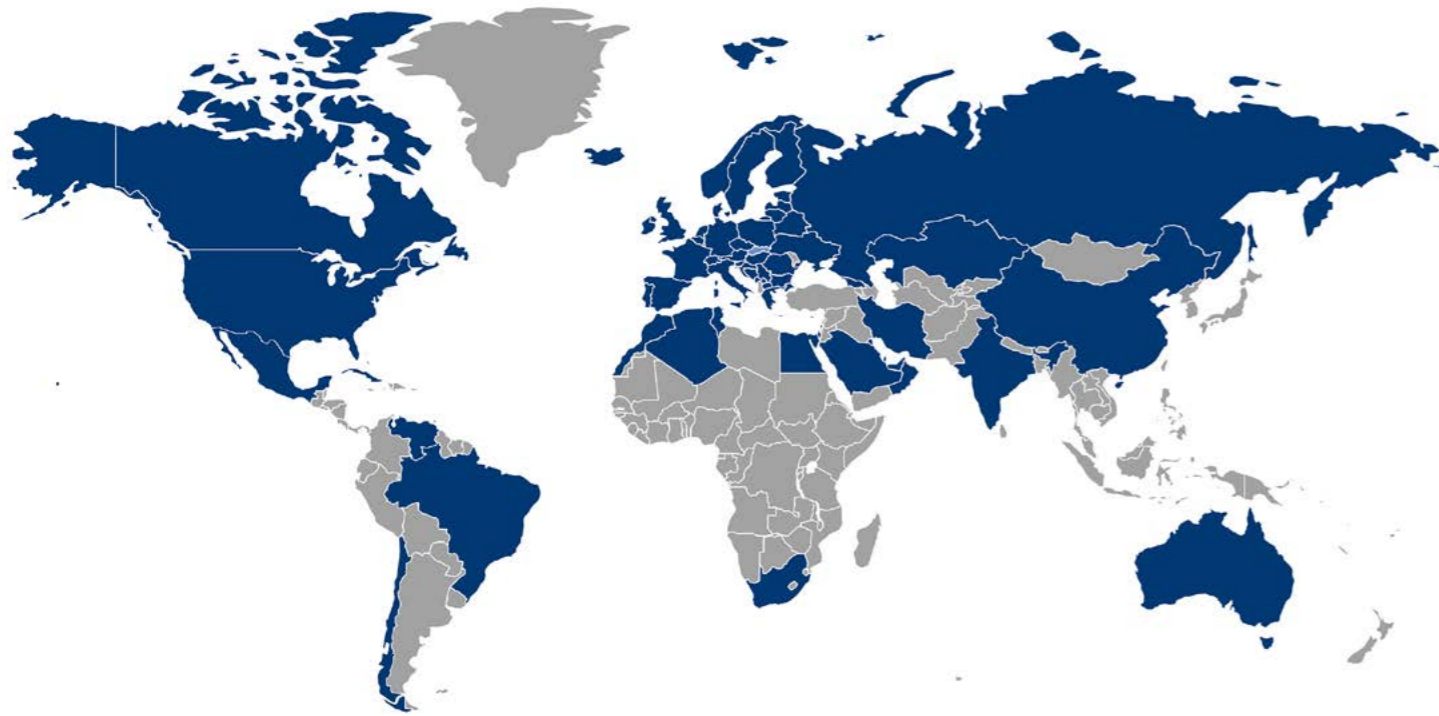
## MACHINE PROFILE

### CombiCut series

- Working area 6,000 x 2,000 mm
- Cutting of pipes Ø 30 – 500 mm and hollow sections up to a length 6,000 mm
- Plasma rotator for weld preparation up to 45° with auto-calibration feature (ACTG®)
- Scanner for Additional Beveling Process (ABP)
- 2D oxyfuel

Hykemont spol. s r. o. is a Slovak manufacturing company with over 25 years of history. The main activity is forming of large-scale steel sheets and welding of steel structures. The company has established a certification system of quality management in accordance with the requirements of EN ISO 9001, EN 3834-2, EN 1090 -1.2. The company has a major partnership with the Austrian steel shipping and storage container producer CONTAINEX.

Tatneft is one of the largest Russian oil companies whose production accounts for about 8% of all crude oil produced in the Russian Federation and over 80% of crude oil produced in the CIS Republic of Tatarstan. Apart from domestic production the company follows a strategy of continuous expansion of the production base to outside territories including the CIS and the Middle East countries. Activities of the company – production of oil, gas and petrochemical products – comply with high standards of environmental and industrial safety.



## MicroStep – 30 years of Cutting and Automation

The company MicroStep was established in 1991 by members of the Department of Automation and Regulation, Faculty of Electrical Engineering and Information Technology, Slovak University of Technology in Bratislava, Slovakia with the aim to develop and deliver microprocessor-based control technology to various branches of industry. Over the years, the company has become one of the leading suppliers of cutting equipment that supplied more than 3,000 cutting machines worldwide in cooperation with strong channel partners spread over 58 countries.

MicroStep is offering the full range of contemporary cutting technologies – plasma, laser, oxyfuel and waterjet – along with a great variety of supplemental equipment and software for drilling, tapping, countersinking, marking as well as process synchronization, automated material handling and robotic solutions. As a producer of not only machines themselves but also of control systems and CAM software the company delivers solutions that fit custom demands and are future-proof with respect to machine extensions in size and additional technologies. MicroStep's machines can process different types of materials including plates, pipes, profiles, beams, domes and elbows while implementing advanced automation processes. All of MicroStep's machines are controlled by iMSNC®, a multi-tasking PC-based control system developed and produced in-house. The focus of the company are hi-tech machines that accommodate industry's latest trends – delivery of fully automatic workplaces, which integrate different cutting/drilling/marking technologies in combination with automatic loading and unloading systems, following demands for higher level of machinery automation and interconnection of control systems, CAM software and ERP systems.

MicroStep's rapid growth in its 30+ years' history resulted in founding of several domestic and international subsidiaries, most notable of which are MicroStep Europa GmbH in Germany, MicroStep USA and MicroStep China. MicroStep delivers its products through a professional network of authorized representatives that cover sales and service activities in 58 countries all around the world.

Headquarters of MicroStep  
in Bratislava, Slovakia



Industry	Customer	Country	Machine series	Page
Agricultural Equipment & Machinery	OFAS S.p.A	I	MSF-P	26
Construction Equipment & Machinery	Caterpillar Tosno LLC	RUS	PLS	47
	Sunward Intelligent Equipment Group	CHN	MG	35
	Wacker Neuson Kragujevac d.o.o.	SRB	MG	52
	Zoomlion Heavy Industry Science and Technology Co., Ltd.	CHN	MG	46
Crane & Lifting Equipment	ZAO Konecranes	UA	MG	53
Domes Production & Processing	Bödenpresswerk Daaden GmbH	D	DRM, MG, CombiCut	44
	Slawinski & Co. GmbH	D	DRM	40
Electric Appliances	Gree Electric Appliances Inc.	CHN	PipeCut	61
Energetics & Power Plants	Finow Rohrsysteme GmbH	D	CPCut	34
	INNERGY HEAVY INDUSTRIES	E	ProfileCut	22
Food Packaging Machinery	Sealpac GmbH	D	MSF	12
Mining Equipment & Machinery	Solintal Lrd, S.A.	E	CombiCut, MasterCut	16
	Zhengzhou Coal Mining Machinery (Group) Co., Ltd.	CHN	CombiCut, MG	41
Oil & Gas	Euro Gas Systems S.R.L.	RO	DRM	30
	NOV Kostroma LLC	RUS	MG	13
	PAO Tatneft	RUS	CombiCut	69
Pressure Vessels & Boilers	Allia	F, PL	CombiCut	25
	ATC Aulagner	F	DRM	62
	Bosch Termotechnika s.r.o.	CZ	MSF Pipe-T	38
	Danstoker A/S	DEN	CombiCut	11
	Engicon nv (Geldof)	B	MG	56
	GEA Brewery Systems GmbH	D	MG	43
	Robert Bosch GmbH	D, RUS	CombiCut, MG	5
Sanitary & Household Products	SC Mondial SA / Villeroy & Boch Group	RO	AquaCut + Robot	51
Shipyards & Offshore	Agility Subsea Fabrication AS	NOR	CombiCut	32
	Australian Naval Infrastructure	AUS	MG, DRM-PL, MSLoop	33
	Chantiers de l'Atlantique	F	DRM-PL, MSF Max	10
	Damen Shipyards Group	NL, CHN, RO	MG, MicroMill	50
	Fr. Lürssen Werft GmbH & Co. KG	D	MG, PLS, OxyCut	28
	German Naval Yards Kiel GmbH	D	DRM-PL, EasyCut, MG	55
	GOTECH Sp. z o.o.	PL	DRM, EasyCut	48
	Irving Shipbuilding Inc.	CAN	DRM-PL	57
	Jan De Nul NV	B	MG + Robot	58
	Meyer Turku Oy	FIN	CombiCut, DRM, DRM-PL	4
	Neptune Shipyards BV	NL	MG	19
	Royal IHC	NL	CombiCut, MG	7
	Smulders Group	B, PL	MG	65
VARD Group AS	NOR	CombiCut	17	
Steel Processing & Job Cutting	Acciai di Qualità S.p.A.	I	MG, MSF, MSF Max	42
	AWAC spol. s r. o.	CZ	AquaCut	37
	Caccin Lavorazione Metalli Srl	I	MG, MSF	20
	Damatech d.o.o.	SLO	DRM	21
	GK Steel	SA	EasyCut, MSF, PLS	63
	Klößner & Co Deutschland GmbH	D	CombiCut, MG, PLS, OxyCut	29
	Maschinen- und Metallbau Joachim Striegel e. K.	D	AquaCut, PLS	64
	Oy Flinkenberg Ab	FIN	MG	23
	Prinzing Brennschneidtechnik GmbH & Co. KG	D	CombiCut	36
	stürmsfs AG	CH	CombiCut, MG, MicroLas	8
Steel Production	Altos Hornos de México S.A.B. de C.V.	MEX	Robot	24
	Hykemont spol. s r. o.	SK	MSF	68
	Industeel France / ArcelorMittal Group	F	CombiCut	60
	Salzgitter Mannesmann Forschung GmbH	D	MSF Compact	49
thyssenkrupp Stahlkontor GmbH	D	MG	14	
Steel & Structural Steel Construction	Caldererías Indúlicas, S.L.	E	CombiCut	59
	Namaqua Engineering	SA	MSF, ProfileCut	6
	Rytz Industriebau AG	CH	MSF	31
	Ulrich Lippert GmbH & Co. KG	D	MSF Compact	27
	Zamil Steel Buildings India Pvt. Ltd.	IND	CombiCut	15
	ZAO Kurganstalmost	RUS	DRM	67
Vehicles & Transport Systems	Automobili Lamborghini S.p.A.	I	MicroCut	45
	BRÜGGEN Oberflächen- und Systemlieferant GmbH	D	MG	9
	Doppelmayr Seilbahnen GmbH	A	DRM, MG	3
	Feldbinder Spezialfahrzeugwerke GmbH	D	DRM, MasterCut, MG, PLS	39
	Guangzhou Hongxun Elevator Machinery Co., Ltd.	CHN	ProfileCut	18
	SCHWARTE GROUP Sp. z o.o.	PL	DRM	66
	Tikhvin Freight Car Building Plant	RUS	CombiCut, MasterCut, PLS	54



Your Partner for  
Cutting and Automation



## Complex & Multi-functional

There is hardly any other CNC system with such a variety of technologies provided by a single machine and for such a variety of materials: sheets, pipes, profiles as well as domes. MicroStep is offering such versatile and efficient solutions by nature.

See the cut sample above – bevel cutting of contours and openings, drilling, tapping, countersinking, punch marking and contour marking, all delivered in a fully automatic mode by our multi-functional plasma cutting machine MG.



Contact the MicroStep  
representative in your area!

For more information visit:  
[www.microstep.eu/dealers](http://www.microstep.eu/dealers)



### Product Catalog

Information on all MicroStep cutting systems  
can be found in our current product catalog.