

E-Brake C 200T Ultra with Tool Mate

Specifications



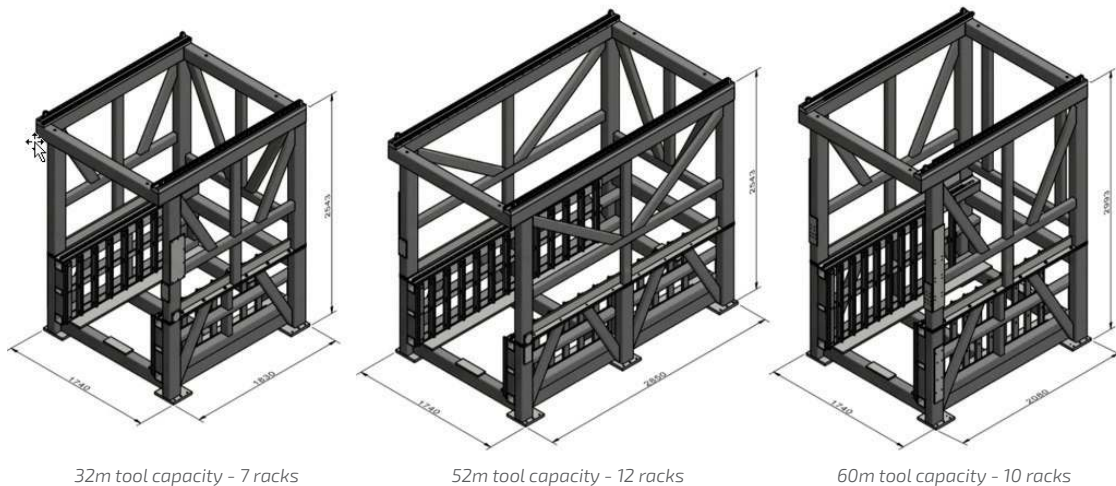
Function / option :	E-Brake C 200T	H-Brake
Press brake sizes 110T – 320T	*	√
Tool-Mate can be placed left and right	*	√
Additional finger stops (Z0 and Z3) can be added	√	√
Can be expanded at a later date for 2nd machine		√
Choice of 3 systems Tool-Mate 32, 52, 60mt	√	√
Rotating tool (rotating station)	√	√
Controlled by all External Software	√	√
Locked storage in Tool-mate	√	√
Tool cleaning for return Tool-Mate	√	√
All standard CNC back gauges possible	*	√
E-bend L Angle Measuring System	√	√
Benefits:		
Clearance between back gauge	√	√
No pollution of the tools	√	√
Holds up to 515mm tool sections	√	√
Intelligent tool change (uses tools from existing tool setup for new setup)	√	√
Add new tool by operator	√	√
Place tools manually	√	√
100% Electric	√	
Specifications Tool-Mate:		
Max. V-opening 70mm	√	√
Max. Die working height 150mm	√	√
Max Upper tool working height 200mm	√	√
Min. Length 20mm	√	√
Max. Length 515mm	√	√
Placing tools longer than 125mm above and 250mm below = 4 seconds	√	√
Placing upper tool < 125mm = 8.5 seconds	√	√
Placing lower Tool < 250mm = 8 seconds	√	√
Remove tool = 1 sec + place	√	√

*.E-brake C 200T is only available in 1 version

*.Tool-Mate can only be placed on the left side for E- brake C 200T.

*.For E-brake C 200T only the "SafanDarley H" backgauge is possible (incl. delta X)

Tool Mate 32, 52, 60:



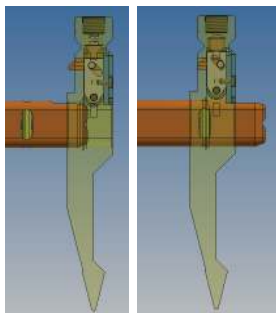
32m tool capacity - 7 racks

52m tool capacity - 12 racks

60m tool capacity - 10 racks

Tool gripper and tool safety click:

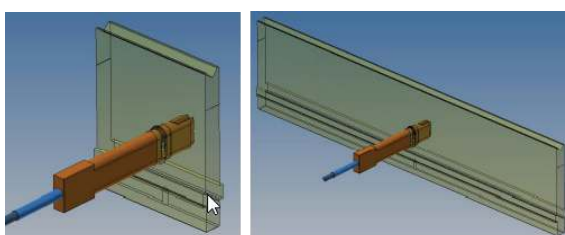
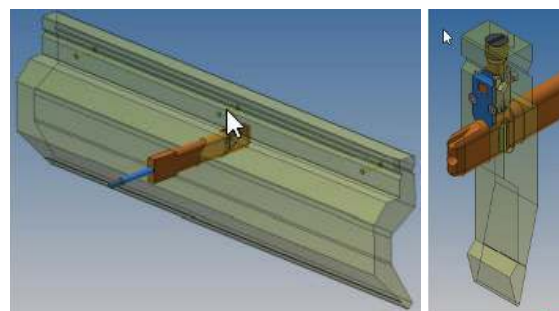
The inner part of the tool consists of a mechanism that allows the gripping and release of the upper tool, through the mechanical movement of the pin, which retracts the "safety click". When released, the roller goes down and is pulled out of the top spring and the "safety click" goes back out.



This makes it possible to make different tool setups without having to clear the existing tools first. Tools that are already in the machine can be reused and extra lengths can be added if necessary or vice versa.

Upper tools

Upper tools from 20 mm to 125 mm (max. 13 kg) can be placed completely through the shuttle. Tools from 125 mm to 515 mm (max. 40 kg) will be dragged by the shuttle, with the clamp as a guide.



Lower tools

Lower tools from 20 mm to 250 mm (max. 13 kg) can be placed completely through the shuttle. Tools from 250mm to 515mm (max. 40kg) will be dragged by the shuttle, with the clamp as guide/support.

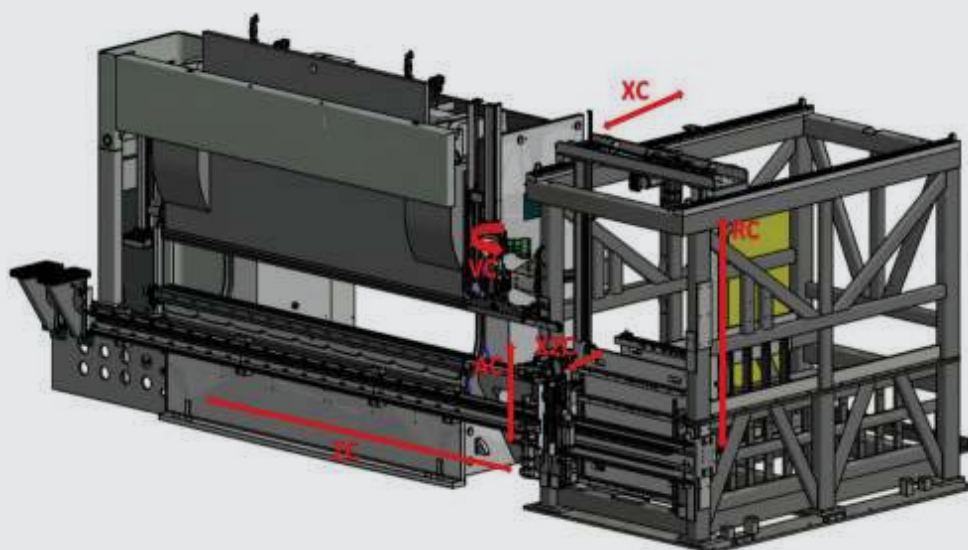
Tool change times:

- Placing tools longer than 125mm above and 250mm below = 4 seconds
- Place top tool < 125mm = 8.5 seconds
- Place Bottom Tool < 250mm = 8 seconds
- Remove tool = place + 1 second

Shuttle *
 ZC 3,2 m/s
 AC 1,19 m/s
 X2C 0,21 m/s

Storage
 XC 0,38 m/s
 RC 0,57 m/s

* Speed depends
 on motors
 and hardware
 communication



Loading time for long tools *	4 sec.
Loading time for short punches	8.5 sec.
Loading time for short dies	8 sec.
Unloading time for tools	Loading time + 1 sec.

* punch length >= 125 mm, die length >= 250 mm

AXES PARAMETERS		
	Max. speed (m/s)	Max. acc (m/s ²)
XC AXIS	0,57	0,3
RC AXIS	0,38	0,8
ZC AXIS	3,24	8
AC AXIS	1,19	20
VC AXIS	0,40	1
X2C AXIS	0,21	1,5